

UNITED STATES
DEPARTMENT OF THE INTERIOR
GEOLOGICAL SURVEY

(Other In-
revel-
ions on
Je)

Budget Bureau No. 42-R1425.

APPLICATION FOR PERMIT TO DRILL, DEEPEN, OR PLUG BACK

1a. TYPE OF WORK

DRILL ☒

DEEPEN ☐

PLUG BACK ☐

b. TYPE OF WELL

OIL
WELL ☒

GAS
WELL ☐

OTHER

SINGLE
ZONE ☒

MULTIPLE
ZONE ☐

2. NAME OF OPERATOR

Marbob Energy Corporation

3. ADDRESS OF OPERATOR

P.O. Drawer 217, Artesia, N.M. 88210

4. LOCATION OF WELL (Report location clearly and in accordance with any State requirements)

At surface

990 FSL 1652 FWL

At proposed prod. zone

Same

RECEIVED BY

APR 18 1984

O. C. D.
ARTESIA, OFFICE

5. LEASE DESIGNATION AND SERIAL NO.

LC-028731 (A)

6. IF INDIAN, ALLOTTEE OR TRIBE NAME

7. UNIT AGREEMENT NAME

8. FARM OR LEASE NAME

M. Dodd "A"

9. WELL NO.

28

10. FIELD AND POOL, OR WILDCAT

Grayburg Jackson

11. SEC., T., R., M., OR BLK.
AND SURVEY OR AREA

Sec. 22-T17S-R29E

12. COUNTY OR PARISH

Eddy

13. STATE

N.M.

14. DISTANCE IN MILES AND DIRECTION FROM NEAREST TOWN OR POST OFFICE*

20 air miles east of Artesia, N.M. 88210

15. DISTANCE FROM PROPOSED*

LOCATION TO NEAREST
PROPERTY OR LEASE LINE, FT.
(Also to nearest drig. unit line, if any)

990'

16. NO. OF ACRES IN LEASE

600

17. NO. OF ACRES ASSIGNED
TO THIS WELL

40

18. DISTANCE FROM PROPOSED LOCATION*
TO NEAREST WELL, DRILLING, COMPLETED,
OR APPLIED FOR, ON THIS LEASE, FT.

660'

19. PROPOSED DEPTH

3400'

20. ROTARY OR CABLE TOOLS

Rotary

21. ELEVATIONS (Show whether DP, RT, GR, etc.)

3547.7' GR

22. APPROX. DATE WORK WILL START*

10/27/83

23.

PROPOSED CASING AND CEMENTING PROGRAM

SIZE OF HOLE	SIZE OF CASING	WEIGHT PER FOOT	SETTING DEPTH	QUANTITY OF CEMENT
12 1/4"	8 5/8"	24#	350'	Sufficient to circulate
7 7/8"	5 1/2"	15.50#	3400'	450 sax, to base of salt

Pay zone will be selectively perforated and stimulated as needed for optimum production.

Attached are: 1. Location & acreage dedication plat
2. Supplemental drilling data
3. Surface use plan



IN ABOVE SPACE DESCRIBE PROPOSED PROGRAM: If proposal is to deepen or plug back, give data on present productive zone and proposed new productive zone. If proposal is to drill or deepen directionally, give pertinent data on subsurface locations and measured and true vertical depths. Give blowout preventer program, if any.

24.

SIGNED

Carolyn Davis

TITLE

Production Clerk

DATE

10/25/83

(This space for Federal or State office use)

PERMIT NO.

APPROVAL DATE

APPROVED BY

CONDITIONS OF APPROVAL, IF ANY:

Amanda A. Lopez

TITLE

Chief Board of Field

DATE

11/14/83

*See Instructions On Reverse Side

APPROVAL SUBJECT TO
GENERAL REQUIREMENTS AND
SPECIAL STIPULATIONS
ATTACHED

MEXICO OIL CONSERVATION COMMISSION
WELL LOCATION AND ACREAGE DEDICATION PLAT

Form C-102
Supersedes C-128
Effective 1-1-65

All distances must be from the outer boundaries of the Section.

Operator MARBOB ENERGY CORPORATION			Lease M. DODD "A"		Well No. 28
Unit Letter N	Section 22	Township 17 SOUTH	Range 29 EAST	County EDDY	
Actual Footage Location of Well: 990 feet from the SOUTH line and 1652 feet from the WEST line					
Ground Level Elev. 3547.7	Producing Formation San Andres		Pool Grayburg Jackson		Dedicated Acreage: 40 Acres

1. Outline the acreage dedicated to the subject well by colored pencil or hachure marks on the plat below.
2. If more than one lease is dedicated to the well, outline each and identify the ownership thereof (both as to working interest and royalty).
3. If more than one lease of different ownership is dedicated to the well, have the interests of all owners been consolidated by communitization, unitization, force-pooling, etc?

☐ Yes ☐ No If answer is "yes," type of consolidation _____

If answer is "no," list the owners and tract descriptions which have actually been consolidated. (Use reverse side of this form if necessary.) _____

No allowable will be assigned to the well until all interests have been consolidated (by communitization, unitization, forced-pooling, or otherwise) or until a non-standard unit, eliminating such interests, has been approved by the Commission.

*M. DODD "A" #14- SAN ANDRES Comm.
MARBOB OPERATOR*

M. DODD "A" #1- PLACED 1967

RECEIVED BY
APR 18 1984
O. C. D.
ARTESIA, OFFICE

1652

990

14

CERTIFICATION

I hereby certify that the information contained herein is true and complete to the best of my knowledge and belief.

Carolyn Orris

Name

Carolyn Orris

Position

Production Clerk

Company

Marbob Energy Corporation

Date

10/25/83

I hereby certify that the well location shown on this plat was plotted from field notes of actual surveys made by me or under my supervision, and that the same is true and correct to the best of my knowledge and belief.

Date Surveyed

2/9/83

Registered Professional Engineer and/or Land Surveyor

John W. West

Certificate No.

JOHN W. WEST NO. 676

Rule 6:

M. Dodd "A" #28

Pool: Grayburg Jackson Seven Rivers Queen Grayburg San Andres

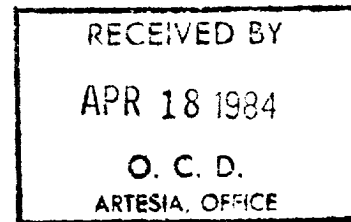
Standard spacing unit: 40 acres

Rule 7:

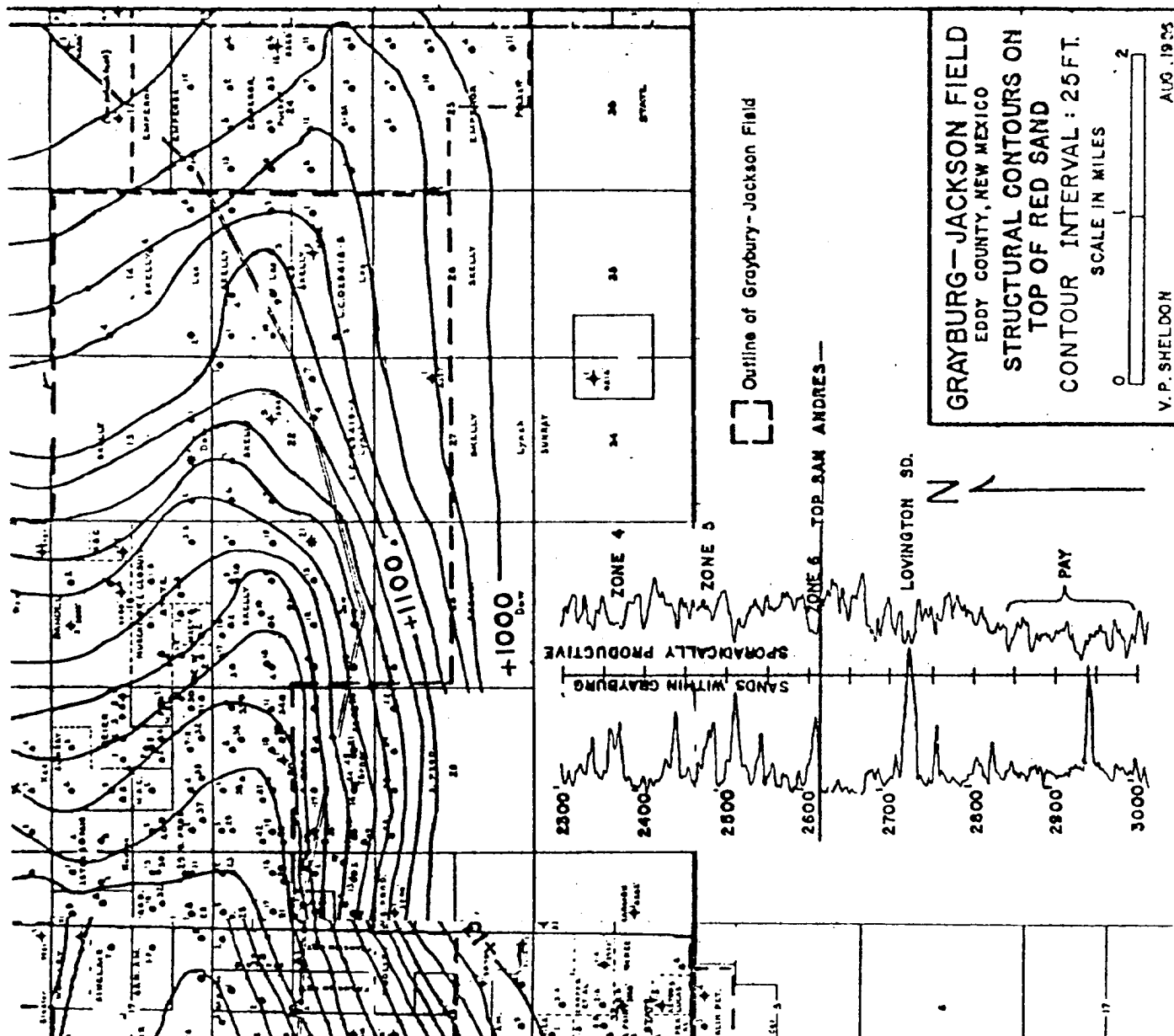
NA

Rule 8:

- a. M. Dodd "A" #28 - 990 FSL 1652 FWL Sec. 22-T17S-R29E
M. Dodd "A" #14 - 330 FSL 2310 FWL Sec. 22-T17S-R29E
- b. #28 - 1/31/83
#14 - 2/2/56
- c. #28 - 3/14/84
#14 - 3/1/56
- d. None
- e. #28 - 10 bbl oil, 93 mcf gas/day
#14 - 45 bbl oil, 1/3 mcf gas/day
- f. NA
- g. The #14 well produces negligible gas. The #28 experienced new reservoir condition when drilled. The complexity of this reservoir and the new reservoir type production rates attained in the new well indicate the necessity to drill the new well to efficiently drain the reservoir.



File # 9-A



Marbob Energy Corporation
M. Dodd "A" Fed. Well #28
Grayburg Jackson
Eddy County, New Mexico

Pertinent Engineering Data and Conclusions:

Well #28 was completed in the Grayburg Jackson pool March 15, 1984. This is an infill well located as per the attached plat.

Effective April 1, 1984, oil reserves recoverable will be 18,090 barrels and gas reserves recoverable will be 63,450 mcf.

Oil reserves were calculated from the electric log using a volumetric method for a twenty acre drainage. Analagous comparisons of comparable producing well history in the area were also utilized. The economic limit of the well was considered to be reached with a producing rate of 1 BOPD.

The original producing rate on this well was 10 BOPD. This rate is in excess of many of the older wells. It is evident from the producing rate that oil and gas reserves will be recovered only by increased pattern density. It is my conclusion that the infill wells will experience original reservoir conditions.

Paul G. White

Paul G. White
Petroleum Engineer

4-4-84

Date

File # 9-b.

Rule 11:

Notice of this infill request has been sent to Tenneco Oil
Exploration & Production, Suite 200 North-6800 Park Ten Blvd.,
San Antonio, Texas 79212; Southland Royalty Co., 21 Desta Dr.,
Midland, Texas 79701; Jack Plemons, Loco Hills, N.M. 88255.

