

REC. ED BY

SUBMIT IN TRIPLICATE*
(Other instructions on
reverse side)30-015-24796
Form approved.
Budget Bureau No. 42-R1425.MAR 09 1984
UNITED STATES
DEPARTMENT OF THE INTERIOR
O. GEOLOGICAL SURVEY

APPLICATION FOR PERMIT TO DRILL, DEEPEN, OR PLUG BACK

1a. TYPE OF WORK

DRILL ☒DEEPEN ☐PLUG BACK ☐

b. TYPE OF WELL

OIL
WELL ☒GAS
WELL ☐

OTHER

SINGLE
ZONE ☐MULTIPLE
ZONE ☒

2. NAME OF OPERATOR

Marbob Energy Corporation ✓

3. ADDRESS OF OPERATOR

P.O. Drawer 217, Artesia, N.M. 88210

4. LOCATION OF WELL (Report location clearly and in accordance with any State requirements*)

At surface

1650 FNL 2210 FEL

At proposed prod. zone

Same

14. DISTANCE IN MILES AND DIRECTION FROM NEAREST TOWN OR POST OFFICE*

20 air miles east of Artesia, N.M. 88210

15. DISTANCE FROM PROPOSED*

LOCATION TO NEAREST
PROPERTY OR LEASE LINE, FT.
(Also to nearest drlg. unit line, if any)

330'

16. NO. OF ACRES IN LEASE

600

17. NO. OF ACRES ASSIGNED
TO THIS WELL

40

18. DISTANCE FROM PROPOSED LOCATION*
TO NEAREST WELL, DRILLING, COMPLETED,
OR APPLIED FOR, ON THIS LEASE, FT.

1650'

19. PROPOSED DEPTH

3450'

20. ROTARY OR CABLE TOOLS

Rotary

21. ELEVATIONS (Show whether DF, RT, GR, etc.)

3563.2' GR

22. APPROX. DATE WORK WILL START*

3/15/84

23.

PROPOSED CASING AND CEMENTING PROGRAM

SIZE OF HOLE	SIZE OF CASING	WEIGHT PER FOOT	SETTING DEPTH	QUANTITY OF CEMENT
12 1/4"	8 5/8"	24#	350'	Sufficient to circulate
7 7/8"	5 1/2"	15.50#	3450'	450 sax, to base of salt

Pay zone will be selectively perforated and stimulated as needed for optimum production.

Attached are: 1. Location & acreage dedication plat
2. Supplemental drilling data
3. Surface use plan

Not a PD
PD-12 1/2" BK.
3-16-84

IN ABOVE SPACE DESCRIBE PROPOSED PROGRAM: If proposal is to deepen or plug back, give data on present productive zone and proposed new productive zone. If proposal is to drill or deepen directionally, give pertinent data on subsurface locations and measured and true vertical depths. Give blowout preventer program, if any.

24.

SIGNED

TITLE

Production Clerk

DATE 2/13/84

(This space for Federal or State office use)

PERMIT NO.

APPROVAL DATE

APPROVED BY

[Orig. Sgd.] Earl R. Cunningham

TITLE

District Manager

CONDITIONS OF APPROVAL, IF ANY:

DATE MAR 08 1984

APPROVAL SUBJECT TO
GENERAL REQUIREMENTS AND
SPECIAL STIPULATIONS
ATTACHED

*See Instructions On Reverse Side

NEW MEXICO OIL CONSERVATION COMMISSION
WELL LOCATION AND ACREAGE DEDICATION PLAT

Form 7-77
Supersedes C-128
Effective 1-1-75

Section, Township, Range, and Meridian of the Section

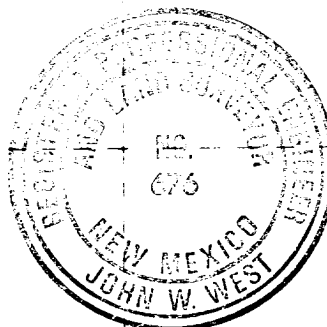
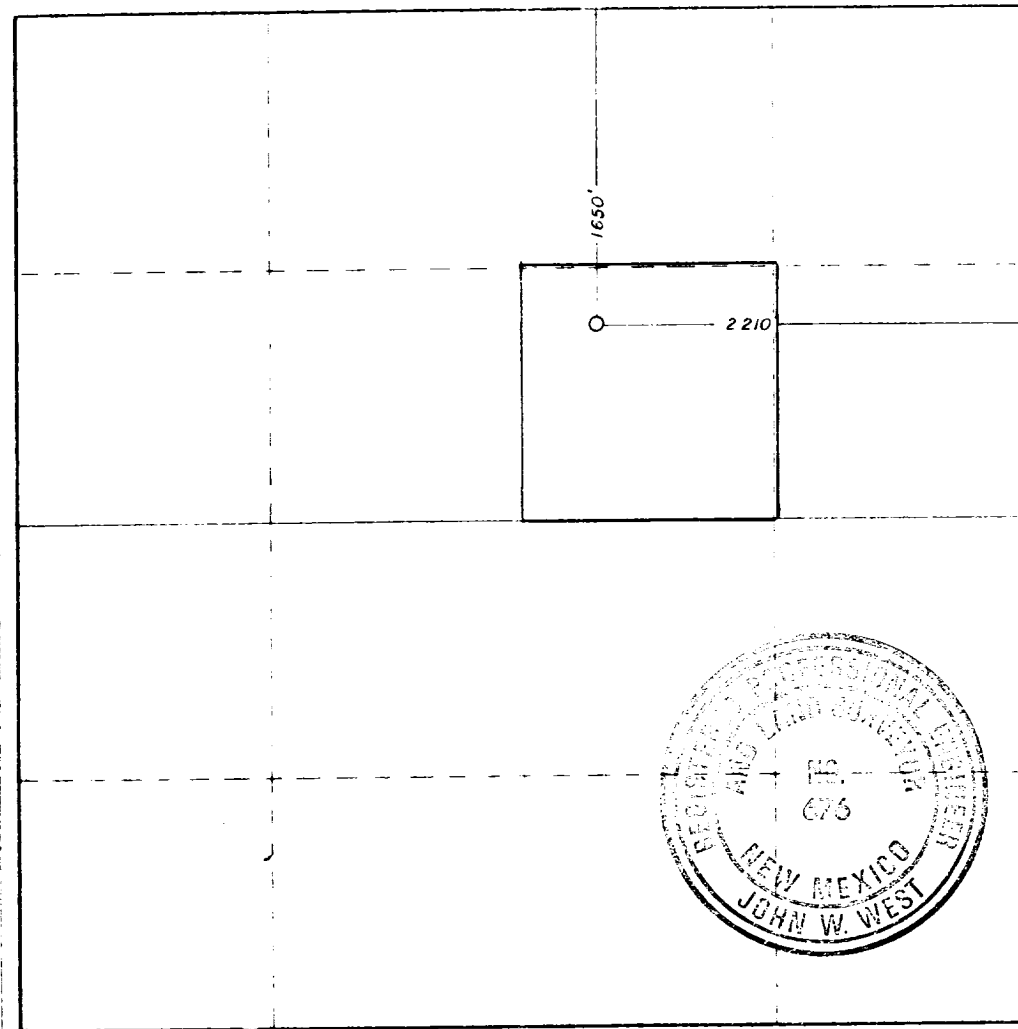
Operator MARBOB ENERGY CORP.		Well Name M DODD "A"		Acres 32	
Section G	Section 22	Township 17 SOUTH	Range 29 EAST	County EDDY	
Section 1650		Section NORTH		Section 2210	
Section 3563.2		Section San Andres		Section Grayburg Jackson	
Section 40		Section 40		Section 40	

- 1 Outline the acreage dedicated to the subject well by colored pencil or hatchure marks on the plat below.
- 2 If more than one lease is dedicated to the well, outline each and identify the ownership there (if both as to working interest and royalty).
- 3 If more than one lease of different ownership is dedicated to the well, have the interests of all owners been consolidated by communitization, unitization, force-pooling, etc?

☐ Yes ☐ No If answer is "yes" type of consolidation _____

If answer is "no," list the owners and tract descriptions which have actually been consolidated (if so reverse side of this form if necessary.) _____

No allowable will be assigned to the well until all interests have been consolidated by communitization, unitization, forced-pooling, or otherwise or until a non-standard unit, eliminating such interests, has been approved by the Commission.



CERTIFICATION

I hereby certify that the information contained herein is true and complete to the best of my knowledge and belief.

Carolyn Orris

Carolyn Orris

Production Clerk

Marbob Energy Corporation

2/13/84

I hereby certify that the well location shown on this plat was plotted from field notes of actual surveys made by me or under my supervision and that the same is true and correct to the best of my knowledge and belief.

12/12/83

Registered Professional Land Engineer

John W. West

Certificate No. JOHN W. WEST, 676
RONALD J. EIDSON, 3230

330 660 990 1320 1650 1980 2310 2640 2970 3300 3630 3960 4290 4620 4950 5280 5610 5940 6270 6600 6930 7260 7590 7920 8250 8580 8910 9240 9570 9900



REGAN OFFSHORE INTERNATIONAL, INC.

REGAN BLOWOUT PREVENTERS

The Regan Blowout Preventer is used primarily in production and well control for well control up to 2000 PSI closing pressure.

DESIGN FEATURES

The Regan Blowout Preventer is designed to be used in production and well control for well control up to 2000 PSI closing pressure. The design features include a heavy duty frame, a central ram, and a series of seals to prevent leakage. The device is mounted on a base and is operated by a hydraulic system. The design is robust and reliable, ensuring safe operation in offshore environments.



TOPUS BLOWOUT PREVENTER
PATENTED

SPECIFICATIONS

NOMENCLATURE							
Nominal Size	Gate Pressure (PSI)	Closing Pressure (PSI)	Weight (LBS)	Height (FT)	Length (FT)	Width (FT)	Volume (CU FT)
12"	1500	2000	15000	10	12	12	1728
14"	1500	2000	20000	12	14	14	2744
16"	1500	2000	25000	14	16	16	4096
18"	1500	2000	30000	16	18	18	5832
20"	1500	2000	35000	18	20	20	8000

SUPPLEMENTAL DRILLING DATA

MARBOB ENERGY CORPORATION
WELL #32 M. DODD "A" FEDERAL
SW1/4NE1/4 SEC. 22-17S-29E
EDDY COUNTY, NEW MEXICO
(DEVELOPMENT WELL)

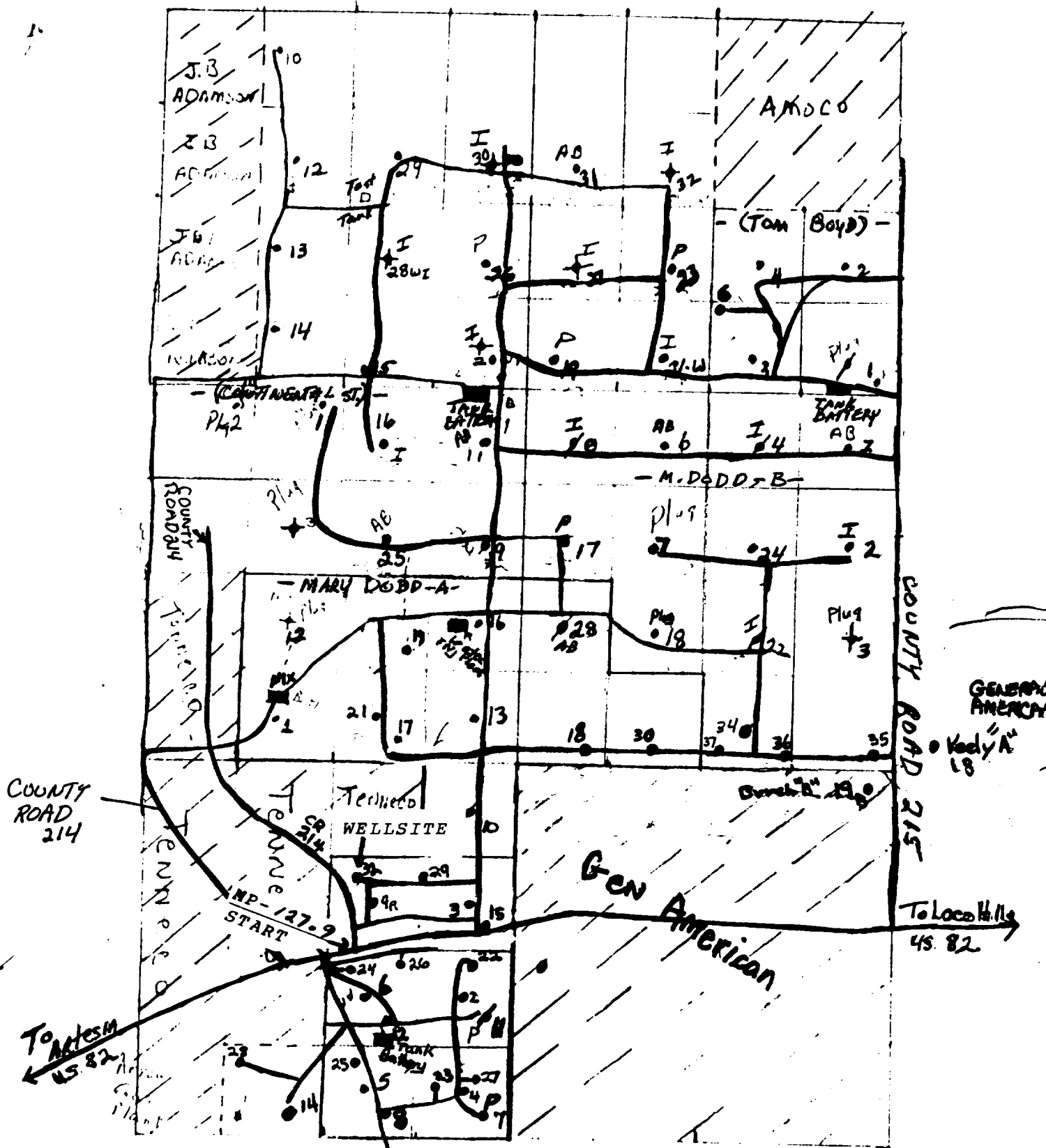
1. SURFACE FORMATION: Quaternary.
2. ESTIMATED TOPS OF GEOLOGIC MARKERS:

Salt	360'	Queen	1815'
Base Salt	780'	Grayburg	2140'
Yates	930'	San Andres	2510'
Seven Rivers	1145'	Glorietta	3900'
3. ANTICIPATED POROSITY ZONES:

Water	Above 180'
Oil	2350 - 3450'
4. CASING DESIGN:

SIZE	INTERVAL	WEIGHT	GRADE	JOINT	CONDITION
8 5/8"	0-350'	24.0#	K-55	STC	New
5 1/2"	0-3450'	15.5#	K-55	STC	New
5. SURFACE CONTROL EQUIPMENT: A double ram-type ~~annular~~ BOP will be used.
6. CIRCULATING MEDIUM:

0 - 350'	Fresh water mud with gel or lime as needed for viscosity control.
350'- 3450'	Salt water mud, conditioned as necessary for control of viscosity and water loss or gain.
7. AUXILIARY EQUIPMENT: Drill string safety valve.
8. LOGGING PROGRAM: CNL-FDC W/GR Log will be run to TD.
9. ABNORMAL PRESSURES, TEMPERATURES OR GASES: A water flow may be encountered in the salt section.
10. ANTICIPATED STARTING DATE: It is planned that operations will commence about March 15, 1984. Duration of drilling, testing and completion operations should be one to four weeks.

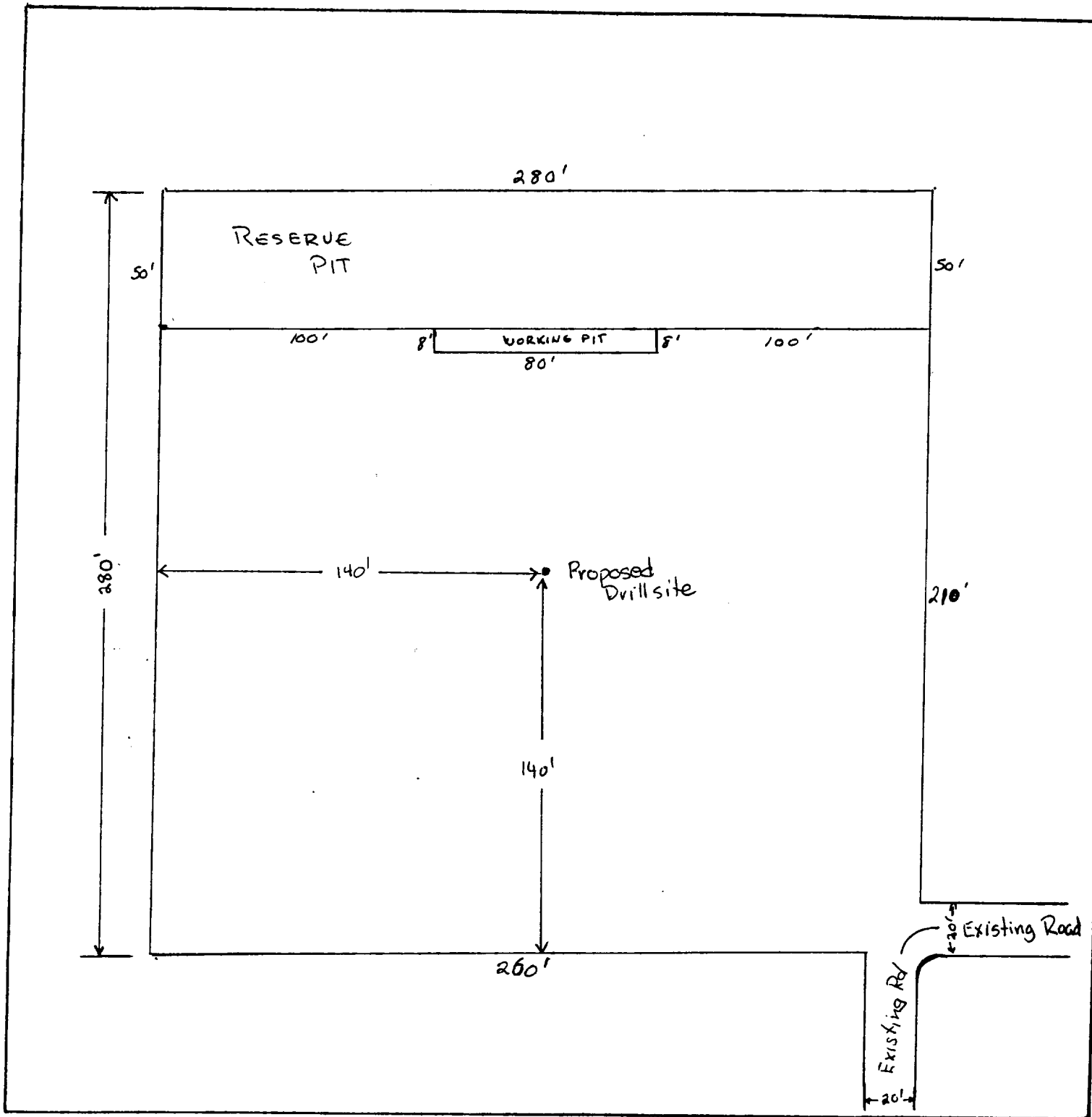


LEGEND

1cm = 20 ft.

SUP Exhibit "C"

Road Map Indicating Wells
In Vicinity of Drillsite
Marbob Energy Corporation
Well #32 M. Dodd A Federal
SW 1/4 SEC. 22-17S-29E



LEGEND

1cm = 20 ft.

SUP Exhibit "D"

SKETCH OF PROPOSED WELL PAD

Marbob Energy Corporation
Well #32 M. Dodd A Federal
SW $\frac{1}{4}$ NE $\frac{1}{4}$ Sec. 22-17S-29E