

30-015-24804

NO. OF COPIES RECEIVED	
DISTRIBUTION	
SANTA FE	✓
FILE	✓
U.S.G.S.	2
LAND OFFICE	✓
OPERATOR	✓

NEW MEXICO OIL CONSERVATION COMMISSION
RECEIVED BY
JAN 31 1984
O. C. D.
ARTESIA, OFFICE

Form C-101
 Revised 1-1-65

A. Indicate Type of Lease

STATE ☒ FEE ☐

B. State Oil & Gas Lease No.

B - 2130

APPLICATION FOR PERMIT TO DRILL, DEEPEN, OR PLUG BACK

1a. Type of Work DRILL <input checked="" type="checkbox"/> DEEPEN <input type="checkbox"/> PLUG BACK <input type="checkbox"/>		7. Unit Agreement Name Burnham Grayburg San Andres Unit
b. Type of Well OIL WELL <input checked="" type="checkbox"/> GAS WELL <input type="checkbox"/> OTHER <input type="checkbox"/> SINGLE ZONE <input type="checkbox"/> MULTIPLE ZONE <input type="checkbox"/>		8. Farm or Lease Name Tract No. 6
2. Name of Operator Anadarko Production Company ✓		9. Well No. 4
3. Address of Operator P. O. Drawer 130, Artesia, New Mexico 88210		10. Field and Pool, or Wildcat Square Lake-Grayburg-SA
4. Location of Well UNIT LETTER N LOCATED 1310 FEET FROM THE South LINE AND 2630 FEET FROM THE West LINE OF SEC. 2 T4S. 17S RGE. 30E NMPM		12. County Eddy
19. Proposed Depth 3250'		19A. Formation Grayburg
20. Rotary or C.T. Rotary		
21. Elevations (Show whether D.P., R.L., etc.) 3749.6' GL	21A. Kind & Status Plug. Bond Blanket	21B. Drilling Contractor W E K Drilling Co.
22. Approx. Date Work will start March 21, 1984		

23. **PROPOSED CASING AND CEMENT PROGRAM**

SIZE OF HOLE	SIZE OF CASING	WEIGHT PER FOOT	SETTING DEPTH	SACKS OF CEMENT	EST. TOP
12-1/4"	8-5/8"	24.0#	500'	Approx. 250	Circulated
7-7/8"	5-1/2"	15.5#	3250'	Approx. 500	Circulated

1. Rig up rotary tool.
2. Drill 12-1/4" hole to approx. 500'; set & circulate or readymix cement to surface on 8-5/8" casing. Install & test Series 900 Double Ram Hydraulic Blowout Preventor.
3. Drill 7-7/8" hole to T D (approx. 3250'); run Open Hole Logs.
4. Set & circulate cement on 5-1/2" casing from T D to surface.
5. Perforate, acidize and fracture treat.
6. Run 2-3/8" tubing, rods and bottomhole pump; install pumping equipment and place well on production.

Note: This is an unorthodox location; a hearing has been scheduled in Santa Fe February 29, 1984 for approval of this location.

180 DAYS
 9-17-84
 UNLESS DRILLING UNDERWAY

IN ABOVE SPACE DESCRIBE PROPOSED PROGRAMS IF PROPOSAL IS TO DEEPEN OR PLUG BACK, GIVE DATA ON PRESENT PRODUCTIVE ZONE AND PROPOSED NEW PRODUCTIVE ZONE. GIVE BLOWOUT PREVENTER PROGRAM, IF ANY.

I hereby certify that the information above is true and complete to the best of my knowledge and belief.

Signed Truman D. Jones Title Field Foreman Date January 30, 1984

(This space for State Use)

APPROVED BY Mike Walker TITLE OIL AND GAS INSPECTOR DATE MAR 14 1984

CONDITIONS OF APPROVAL, IF ANY:

Post AD-1272 Bk
 3-16-84

NEW MEXICO OIL CONSERVATION COMMISSION
WELL LOCATION AND ACREAGE DEDICATION PLAT

Form C-102
Supersedes C-128
Effective 1-1-65

All distances must be from the outer boundaries of the Section.

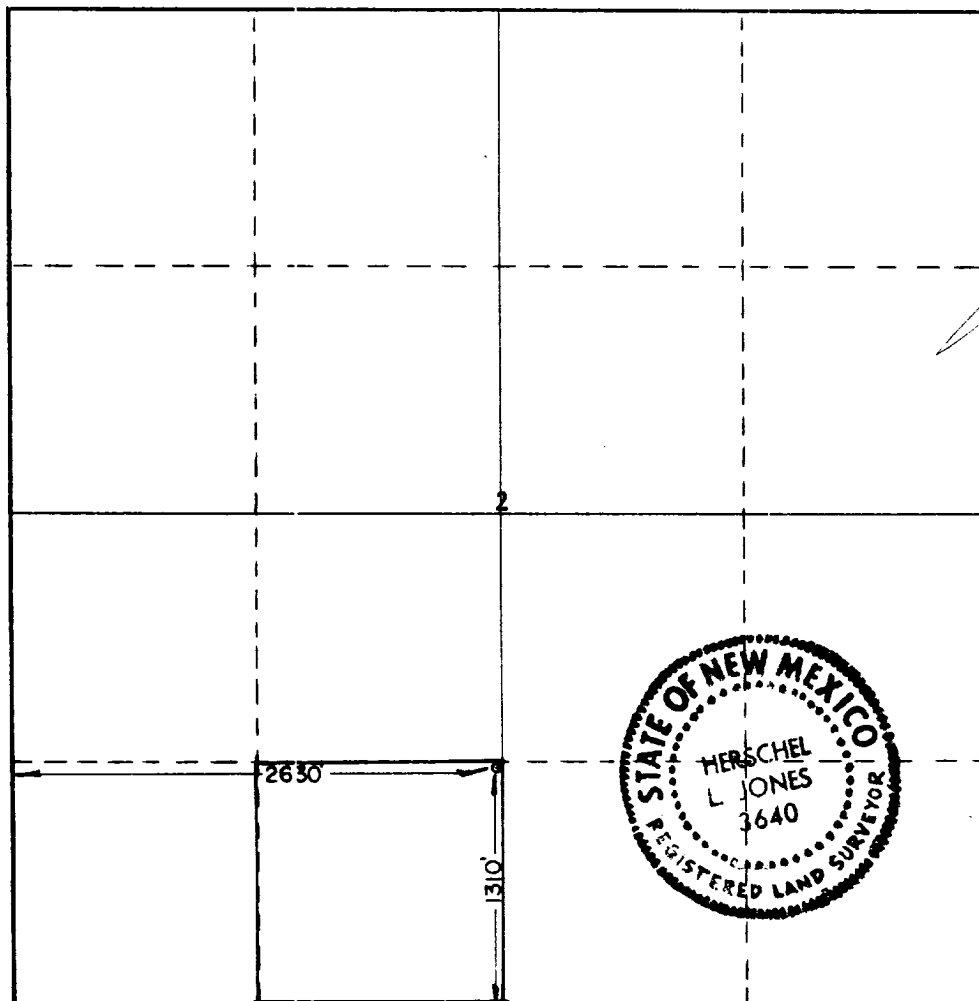
Operator ANADARKO PRODUCTION COMPANY		Lease Burnham Tract #6		Well No. 4
Unit Letter N	Section 2	Township 17 South	Range 30 East	County Eddy
Actual Footage Location of Well: 1310 feet from the South line and 2630 feet from the West line				
Ground Level Elev. 3749.6	Producing Formation Grayburg	Poc Square Lake-Grayburg San Andres	Dedicated Acreage: 40 Acres	

1. Outline the acreage dedicated to the subject well by colored pencil or hatchure marks on the plat below.
2. If more than one lease is dedicated to the well, outline each and identify the ownership thereof (both as to working interest and royalty).
3. If more than one lease of different ownership is dedicated to the well, have the interests of all owners been consolidated by communitization, unitization, force-pooling, etc?

☐ Yes ☐ No If answer is "yes," type of consolidation _____

If answer is "no," list the owners and tract descriptions which have actually been consolidated. (Use reverse side of this form if necessary.) _____

No allowable will be assigned to the well until all interests have been consolidated (by communitization, unitization, forced-pooling, or otherwise) or until a non-standard unit, eliminating such interests, has been approved by the Commission.



CERTIFICATION

I hereby certify that the information contained herein is true and complete to the best of my knowledge and belief.

Jerry E. Buckles
Name
Jerry E. Buckles

Position
Area Supervisor

Company
Anadarko Production Company

Date
January 30, 1984

I hereby certify that the well location shown on this plat was plotted from field notes of actual surveys made by me or under my supervision, and that the same is true and correct to the best of my knowledge and belief.

Date Surveyed
1/26/84

Registered Professional Engineer and/or Land Surveyor

Herschel L. Jones
Certificate No.
3640