

UNITED STATES
DEPARTMENT OF THE INTERIOR
GEOLOGICAL SURVEY

30-015-24843

APPLICATION FOR PERMIT TO DRILL, DEEPEN, OR PLUG BACK

1a. TYPE OF WORK
DRILL ☒ DEEPEN ☐ PLUG BACK ☐

b. TYPE OF WELL
OIL WELL ☒ GAS WELL ☐ OTHER ☐ SINGLE ZONE ☒ MULTIPLE ZONE ☐

2. NAME OF OPERATOR
Marbob Energy Corporation ✓

3. ADDRESS OF OPERATOR
P.O. Drawer 217, Artesia, N.M. 88210

4. LOCATION OF WELL (Report location clearly and in accordance with any State requirements)
At surface 1650 FSL 1650 FWL
At proposed prod. zone Same

14. DISTANCE IN MILES AND DIRECTION FROM NEAREST TOWN OR POST OFFICE*
20 air miles east of Artesia, N.M. 88210

15. DISTANCE FROM PROPOSED* LOCATION TO NEAREST PROPERTY OR LEASE LINE, FT. (Also to nearest drlg. unit line, if any)

16. NO. OF ACRES IN LEASE
1480

17. NO. OF ACRES ASSIGNED TO THIS WELL
40

18. DISTANCE FROM PROPOSED LOCATION* TO NEAREST WELL, DRILLING, COMPLETED, OR APPLIED FOR, ON THIS LEASE, FT.

19. PROPOSED DEPTH
3450'

20. ROTARY OR CABLE TOOLS
Rotary

21. ELEVATIONS (Show whether DF, RT, GR, etc.)
3605.9' GR

22. APPROX. DATE WORK WILL START*
5/1/84

5. LEASE DESIGNATION AND SERIAL NO.
LC-028731 (B)

6. IF INDIAN, ALLOTTEE OR TRIBE NAME

7. UNIT AGREEMENT NAME

8. FARM OR LEASE NAME
M. Dodd "B"

9. WELL NO.
40

10. FIELD AND POOL, OR WILDCAT
Grayburg Jackson

11. SEC., T., R., M., OR BLK. AND SURVEY OR AREA
Sec. 14-T17S-R29E

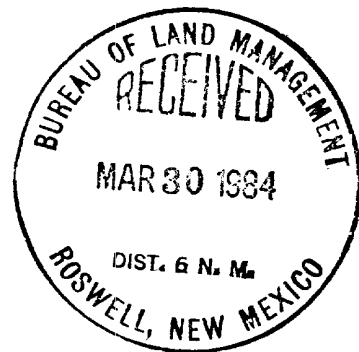
12. COUNTY OR PARISH
Eddy

13. STATE
N.M.

23. PROPOSED CASING AND CEMENTING PROGRAM				
SIZE OF HOLE	SIZE OF CASING	WEIGHT PER FOOT	SETTING DEPTH	QUANTITY OF CEMENT
12 1/4"	8 5/8"	24#	350'	Sufficient to circulate
7 7/8"	5 1/2"	15.50#	3450'	450 sax, to base of salt

Pay zone will be selectively perforated and stimulated as needed for optimum production.

Attached are: 1. Location & acreage dedication plat
2. Supplemental drilling data
3. Surface use plan



IN ABOVE SPACE DESCRIBE PROPOSED PROGRAM: If proposal is to deepen or plug back, give data on present productive zone and proposed new productive zone. If proposal is to drill or deepen directionally, give pertinent data on subsurface locations and measured and true vertical depths. Give blowout preventer program, if any.

24. SIGNED Carolyn Davis TITLE Production Clerk DATE 3/29/84
(This space for Federal or State office use)

PERMIT NO. _____ APPROVAL DATE _____

APPROVED BY ONE Sgd. [Signature] TITLE District Manager DATE APR 13 1984
CONDITIONS OF APPROVAL, IF ANY:

*See Instructions On Reverse Side

APPROVAL SUBJECT TO
GENERAL REQUIREMENTS AND
SPECIAL STIPULATIONS
ATTACHED

NEW MEXICO OIL CONSERVATION COMMISSION
WELL LOCATION AND ACREAGE DEDICATION PLAT

Form C-102
Supersedes C-128
Effective 1-1-65

All distances must be from the outer boundaries of the Section

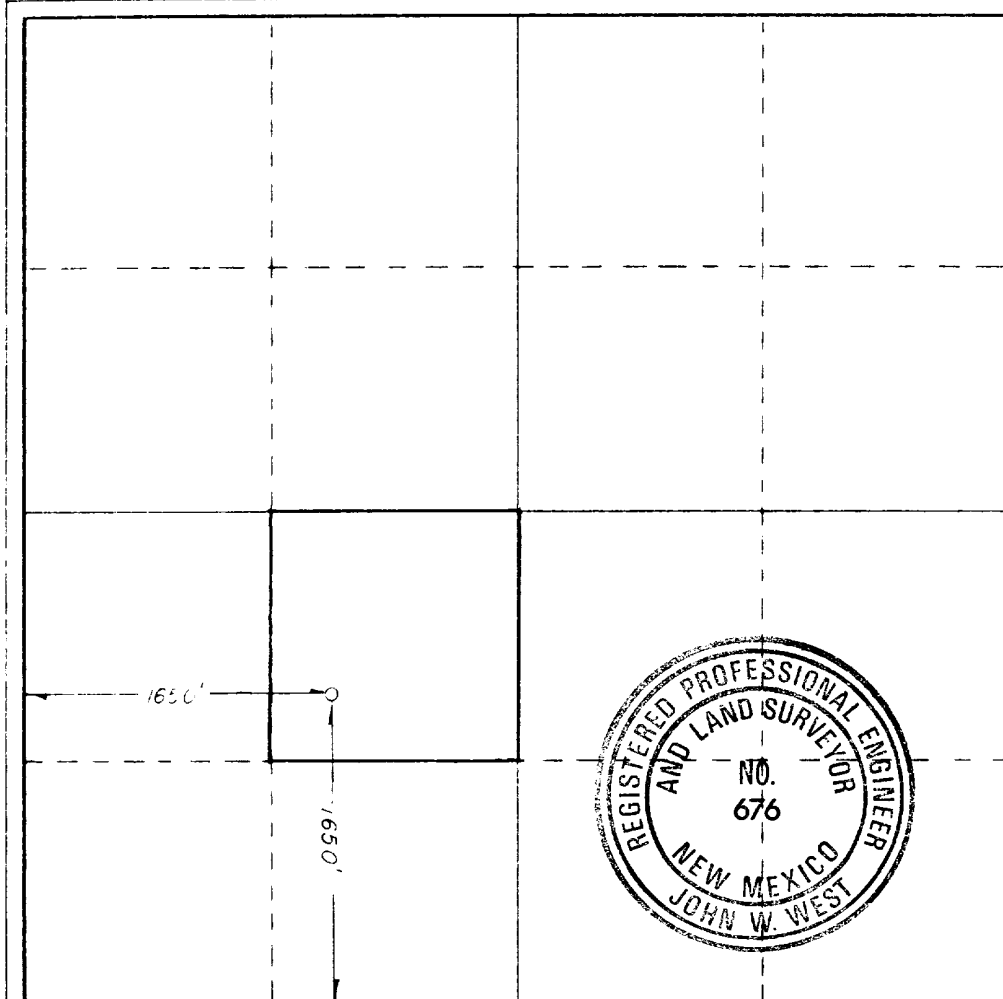
Operator MARBOB ENERGY CORP.		Lease M DOBB "B"		Well No. 40
Grid Letter K	Section 14	Township 17S	Range 29E	County EDDY
Actual Portage Location of Well:				
1650 feet from the SOUTH line and		1650 feet from the WEST line		
Ground Level Elev. 3605.9	Producing Formation San Andres	Pool Grayburg Jackson	Dedicated Acreage 40	

1. Outline the acreage dedicated to the subject well by colored pencil or hachure marks on the plat below.
2. If more than one lease is dedicated to the well, outline each and identify the ownership thereof (both as to working interest and royalty).
3. If more than one lease of different ownership is dedicated to the well, have the interests of all owners been consolidated by communitization, unitization, force-pooling, etc?

☐ Yes ☐ No If answer is "yes," type of consolidation _____

If answer is "no," list the owners and tract descriptions which have actually been consolidated. (Use reverse side of this form if necessary.) _____

No allowable will be assigned to the well until all interests have been consolidated (by communitization, unitization, forced-pooling, or otherwise) or until a non-standard unit, eliminating such interests, has been approved by the Commission.



CERTIFICATION

I hereby certify that the information contained herein is true and complete to the best of my knowledge and belief.

Carolyn Orris

Name
Carolyn Orris

Position
Production Clerk

Company
Marbob Energy Corporation

Date
3/22/84

I hereby certify that the well location shown on this plat was plotted from field notes of actual surveys made by me or under my supervision, and that the same is true and correct to the best of my knowledge and belief.

Date Surveyed

3/13/84

Registered Professional Engineer and/or Land Surveyor

John W. West

Certificate No. **JOHN W. WEST, 676**
RONALD J. EIDSON, 3239

0 330 660 990 1320 1650 1980 2310 2640 2970 3300 3630 3960 4290 4620 4950 5280 5610 5940 6270 6600

REGAN OFFSHORE INTERNATIONAL, INC.

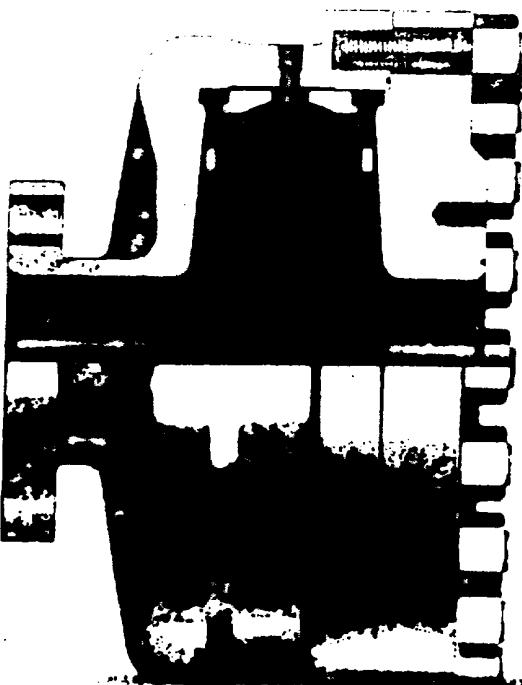
Torrance,

*Annular***REGAN BLOWOUT PREVENTERS**

The Regan Torus Blowout Preventer is used primarily on production and workover rigs for well control up to 3000 PSI working pressure.

DESIGN FEATURES

- a. The Torus Preventer is designed for minimum weight to facilitate its use with production and workover rigs.
- b. The rubber Taper will conform to any obstruction in the well bore. Sealing ability is not affected by minor damage to the inner taper.
- c. The packer will seal in open hole at full working pressure.
- d. The dual packer design increases the reliability of the preventer since the outer rubber is never exposed to the well bore. Under ordinary service, the outer packer is rarely replaced.



TORUS BLOWOUT PREVENTER
PATENTED

SPECIFICATIONS

Nominal Size	Test Pressure (psi)	DIMENSIONS (in.)				End Flanges (I)	R/RX Hing Grooves	Side Outlet
		Outside Diameter	Inner Bore	Overall Height	Weight (lb.)			
6	3000	24.0	21.0	12.0	140	2000 5	33	None
8	3000	30.0	27.0	15.0	190	2000 5	33	2" L.P.
10	3000	36.0	33.0	18.0	265	2000 8	33	None

1. Port in Torus Preventer
2. Port in Annular Preventer
3. Port in Side Outlet
4. Port in Side Outlet
5. Port in Side Outlet
6. Port in Side Outlet
7. Port in Side Outlet
8. Port in Side Outlet
9. Port in Side Outlet
10. Port in Side Outlet

SUP Exhibit E

REGAN BLOWOUT PREVENTER
Marbob Energy Corporation
Well #40 M. Dodd "B" Federal
NE4SW4 Sec. 14-17S-29E

1. The first part of the document is a list of the names of the members of the committee who have been appointed to study the problem of the shortage of housing in the city of New York.

2. The second part of the document is a list of the names of the members of the committee who have been appointed to study the problem of the shortage of housing in the city of New York.

3. The third part of the document is a list of the names of the members of the committee who have been appointed to study the problem of the shortage of housing in the city of New York.

4. The fourth part of the document is a list of the names of the members of the committee who have been appointed to study the problem of the shortage of housing in the city of New York.

SUPPLEMENTAL DRILLING DATA

MARBOB ENERGY CORPORATION
WELL #40 M. DODD "B" FEDERAL
NE1/4SW1/4 SEC. 14-17S-29E
EDDY COUNTY, NEW MEXICO
(DEVELOPMENT WELL)

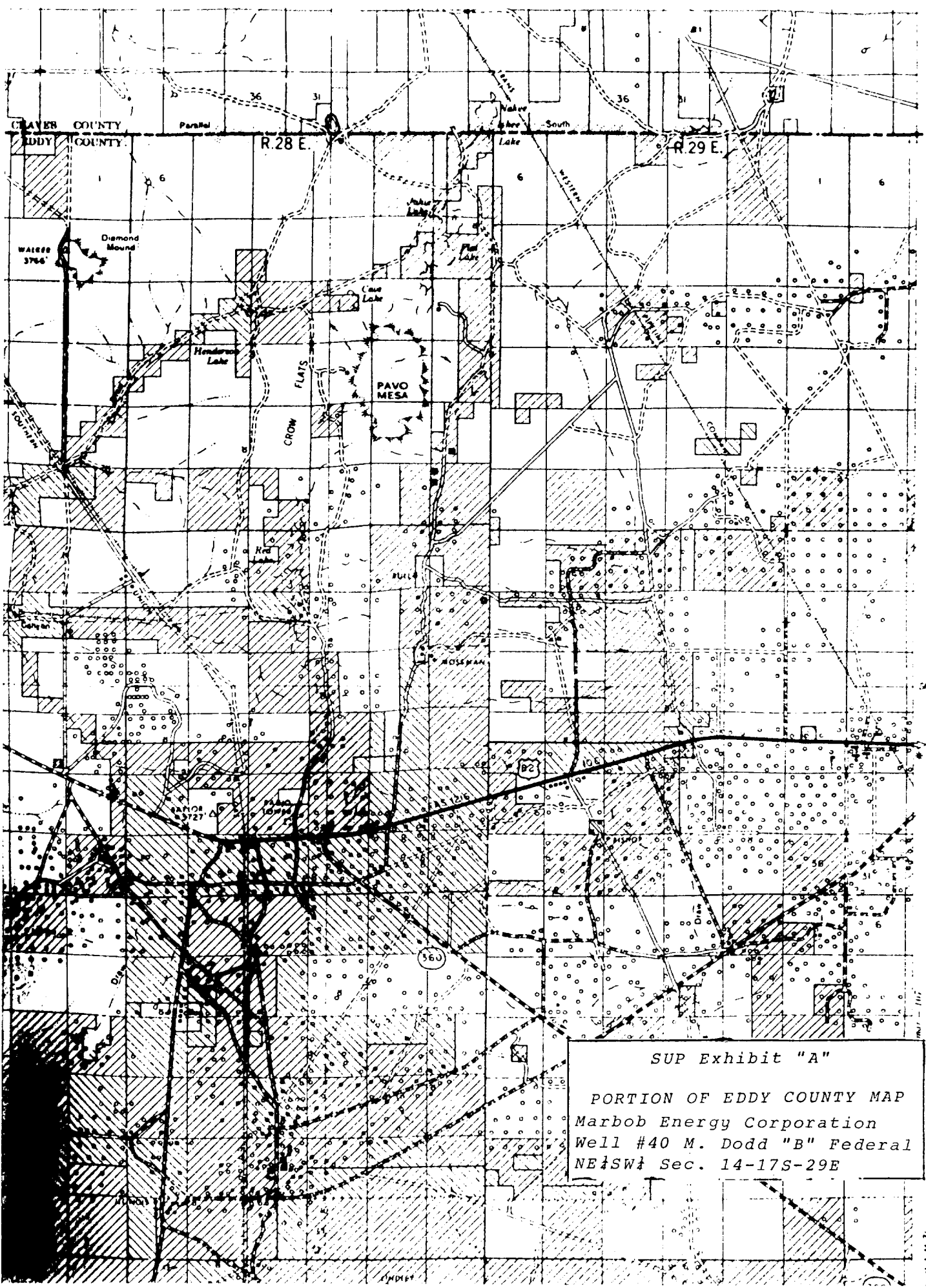
1. SURFACE FORMATION: Quaternary.
2. ESTIMATED TOPS OF GEOLOGIC MARKERS:

Salt	360'	Queen	1815'
Base Salt	780'	Grayburg	2140'
Yates	930'	San Andres	2510'
Seven Rivers	1145'	Glorietta	3900'
3. ANTICIPATED POROSITY ZONES:

Water	Above 180'
Oil	2350 - 3450'
4. CASING DESIGN:

SIZE	INTERVAL	WEIGHT	GRADE	JOINT	CONDITION
8 5/8"	0-350'	24.0#	K-55	STC	New
5 1/2"	0-3450'	15.5#	K-55	STC	New
5. SURFACE CONTROL EQUIPMENT: A double ram-type or annular BOP will be used. (See diagram attached as Exhibit "E")
6. CIRCULATING MEDIUM:

0 - 350'	Fresh water mud with gel or lime as needed for viscosity control.
350' - 3450'	Salt water mud, conditioned as necessary for control of viscosity and water loss or gain.
7. AUXILIARY EQUIPMENT: Drill string safety valve.
8. LOGGING PROGRAM: CNL-FDC W/GR Log will be run to TD.
9. ABNORMAL PRESSURES, TEMPERATURES OR GASES: A water flow may be encountered in the salt section.
10. ANTICIPATED STARTING DATE: It is planned that operations will commence about May 1, 1984. Duration of drilling, testing and completion operations should be one to four weeks.



T.15 S.

T.16 S.

T.17 S.

T.18 S.

SUP Exhibit "A"

PORTION OF EDDY COUNTY MAP

Marbob Energy Corporation

Well #40 M. Dodd "B" Federal

NE 1/4 Sec. 14-17S-29E

30-015-24843

6-28-84
Dual Speed/Neutron Log
1400-3423

