

NM OIL CONS. COMMISSION
 Drawer DD
 Artesia, N.M. 88210
 SUBMIT IN TRIPLICATE*
 (Other instructions on reverse side)

RECEIVED BY
UNITED STATES
DEPARTMENT OF THE INTERIOR
GEOLOGICAL SURVEY
APR 09 1984

30-015-24849

Form approved.
Budget Bureau No. 42-R1425.

cjs

APPLICATION FOR PERMIT TO DRILL, DEEPEN, OR PLUG BACK

1a. TYPE OF WORK
 DRILL ☒ DEEPEN ☐ PLUG BACK ☐

b. TYPE OF WELL
 OIL WELL ☒ GAS WELL ☐ OTHER ☐ SINGLE ZONE ☒ MULTIPLE ZONE ☐

2. NAME OF OPERATOR
 Marbob Energy Corporation ✓

3. ADDRESS OF OPERATOR
 P.O. Drawer 217, Artesia, N.M. 88210

4. LOCATION OF WELL (Report location clearly and in accordance with any State requirements.)*
 At surface 1345 FSL 2310 FEL
 At proposed prod. zone Same

14. DISTANCE IN MILES AND DIRECTION FROM NEAREST TOWN OR POST OFFICE*
 20 air miles east of Artesia, N.M. 88210

15. DISTANCE FROM PROPOSED* LOCATION TO NEAREST PROPERTY OR LEASE LINE, FT. (Also to nearest drlg. unit line, if any) 1345'

16. NO. OF ACRES IN LEASE 1480

17. NO. OF ACRES ASSIGNED TO THIS WELL 40

18. DISTANCE FROM PROPOSED LOCATION* TO NEAREST WELL, DRILLING, COMPLETED, OR APPLIED FOR, ON THIS LEASE, FT. 900'

19. PROPOSED DEPTH 3450'

20. ROTARY OR CABLE TOOLS Rotary

21. ELEVATIONS (Show whether DF, RT, GR, etc.) 3612.7' GR

22. APPROX. DATE WORK WILL START* 3/26/84

5. LEASE DESIGNATION AND SERIAL NO.
 LC-028731 (B)

6. IF INDIAN, ALLOTTEE OR TRIBE NAME

7. UNIT AGREEMENT NAME

8. FARM OR LEASE NAME
 M. Dodd "B"

9. WELL NO.
 38

10. FIELD AND POOL OR WILDCAT
 Grayburg Jackson

11. SEC., T., R., M., OR BLK. AND SURVEY OR AREA
 Sec. 14-T17S-R29E

12. COUNTY OR PARISH Eddy

13. STATE N.M.

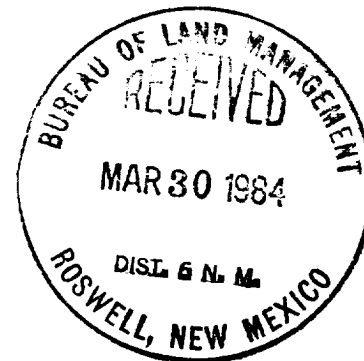
PROPOSED CASING AND CEMENTING PROGRAM

SIZE OF HOLE	SIZE OF CASING	WEIGHT PER FOOT	SETTING DEPTH	QUANTITY OF CEMENT
12 1/4"	8 5/8"	24#	350'	Sufficient to circulate
7 7/8"	5 1/2"	15.50#	3450'	450 sax, to base of salt

*Post. OK
 3D 10/6/84
 4-20-84*

Pay zone will be selectively perforated and stimulated as needed for optimum production.

Attached are: 1. Location & acreage dedication plat
 2. Supplemental drilling data
 3. Surface use plan



IN ABOVE SPACE DESCRIBE PROPOSED PROGRAM: If proposal is to deepen or plug back, give data on present productive zone and proposed new productive zone. If proposal is to drill or deepen directionally, give pertinent data on subsurface locations and measured and true vertical depths. Give blowout preventer program, if any.

24. SIGNED Carolyn Orris TITLE Production Clerk DATE 3/23/84

(This space for Federal or State office use)

PERMIT NO. _____ APPROVAL DATE _____

APPROVED BY 10mg. Sgd. Earl R. Cunningham TITLE District Manager DATE APR 2 1984

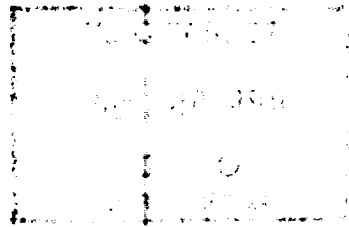
CONDITIONS OF APPROVAL, IF ANY:

SUBJECT TO STATE APPROVAL BY STATE

APPROVAL SUBJECT TO GENERAL REQUIREMENTS AND SPECIAL STIPULATIONS ATTACHED

*See Instructions On Reverse Side

Unorthodox Location NSL-1812 APR 4-3-84



THE UNIVERSITY OF CHICAGO
LIBRARY
1100 EAST 58TH STREET
CHICAGO, ILL. 60637

**NEW MEXICO OIL CONSERVATION COMMISSION
WELL LOCATION AND ACREAGE DEDICATION PLAT**

Form C-102
Supersedes C-128
Effective 1-1-65

All distances must be from the outer boundaries of the Section

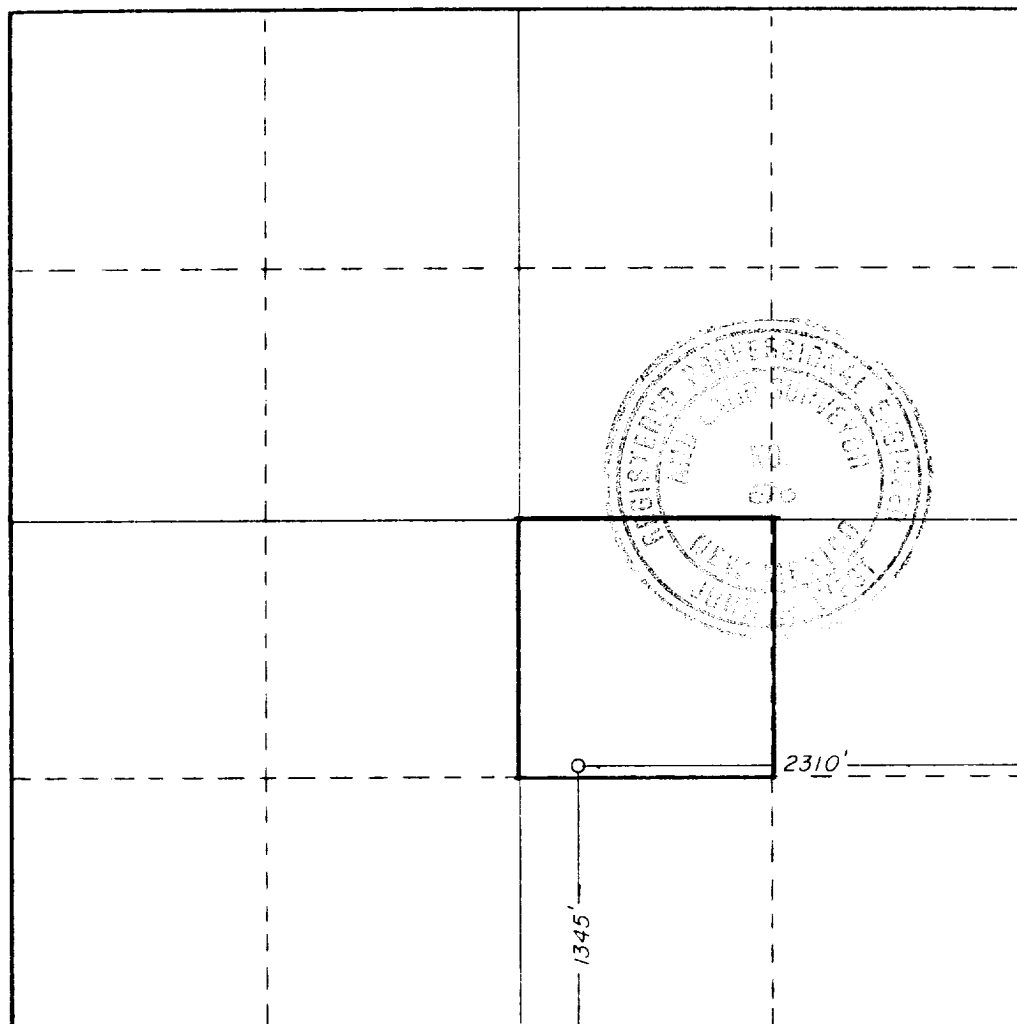
Operator MARBOB ENERGY CORP.			Lease M DOBB "B"		Well No. 38
Grid Letter J	Section 14	Township 17S	Range 29E	County EDDY	
Actual Location of Well: 1345 feet from the SOUTH line and 2310 feet from the EAST line					
Ground Level Elev. 3612.7	Producing Formation San Andres		Pore Grayburg Jackson	Dedicated Acreage 40	

1. Outline the acreage dedicated to the subject well by colored pencil or hachure marks on the plat below.
2. If more than one lease is dedicated to the well, outline each and identify the ownership thereof (both as to working interest and royalty).
3. If more than one lease of different ownership is dedicated to the well, have the interests of all owners been consolidated by communitization, unitization, force-pooling, etc?

☐ Yes ☐ No If answer is "yes," type of consolidation _____

If answer is "no," list the owners and tract descriptions which have actually been consolidated. (Use reverse side of this form if necessary.) _____

No allowable will be assigned to the well until all interests have been consolidated (by communitization, unitization, forced-pooling, or otherwise) or until a non-standard unit, eliminating such interests, has been approved by the Commission.



CERTIFICATION

I hereby certify that the information contained herein is true and complete to the best of my knowledge and belief.

Carolyn Orris

Name
Carolyn Orris

Position
Production Clerk

For my
Marbob Energy Corp.

Date
3/23/84

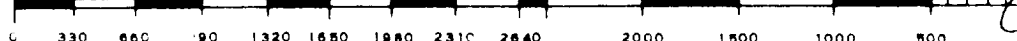
I hereby certify that the well location shown on this plat was plotted from field notes of actual surveys made by me or under my supervision, and that the same is true and correct to the best of my knowledge and belief.

Date Surveyed
3/12/84

Registered Professional Engineer and/or Land Surveyor

John W. West

Certificate No **JOHN W. WEST, 676**
RONALD J. EIDSON, 3239



REGAN OFFSHORE INTERNATIONAL, INC.

Torrance,

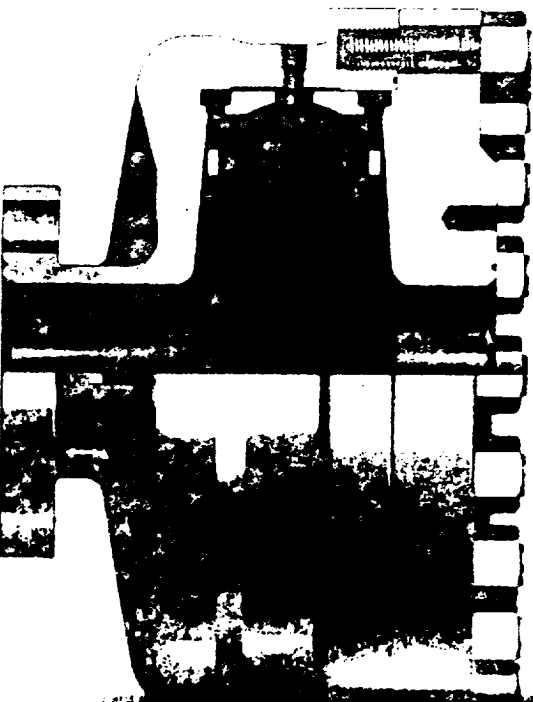
REGAN BLOWOUT PREVENTERS

Annular

The Regan Torus Blowout Preventer is used primarily on production and workover rigs for well control up to 3000 PSI working pressure.

DESIGN FEATURES

- The Torus Preventer is designed for minimum height to facilitate its use with production and workover rigs.
- The rubber packer will conform to any ob-
ject in the well bore. Sealing ability is not affected by minor damage to the inner layer.
- The packer will seal on open hole at full working pressure.
- The dual packer design increases the reliability of the preventer since the outer rubber is never exposed to the well bore. Under ordinary service, the outer packer is rarely replaced.

TORUS BLOWOUT PREVENTER
PATENTED

SPECIFICATIONS

Nominal Size	Test Pressure (psi)	DIMENSIONS (in.)				End Flanges (I)	R/RX Ring Grooves	Side Outlet
		Outside Diameter	Thru Bore	Overall Height	Weight (lb.)			
6	1000	24.0	20.0	18.0	140	2000	15	1/2" I.D.
8	3000	34.0	30.0	25.0	200	2000	15	3/4" I.D.

For full details of design and construction, see Regan Torus Blowout Preventer Patent No. 2,811,111.

SUPPLEMENTAL DRILLING DATA

MARBOB ENERGY CORPORATION
WELL #38 M. DODD "B" FEDERAL
NW1/4SE1/4 SEC. 14-17S-29E
EDDY COUNTY, NEW MEXICO
(DEVELOPMENT WELL)

1. SURFACE FORMATION: Quaternary.

2. ESTIMATED TOPS OF GEOLOGIC MARKERS:

Salt	360'	Queen	1815'
Base Salt	780'	Grayburg	2140'
Yates	930'	San Andres	2510'
Seven Rivers	1145'	Glorietta	3900'

3. ANTICIPATED POROSITY ZONES:

Water	Above 180'
Oil	2350 - 3450'

4. CASING DESIGN:

SIZE	INTERVAL	WEIGHT	GRADE	JOINT	CONDITION
8 5/8"	0-350'	24.0#	K-55	STC	New
5 1/2"	0-3450'	15.5#	K-55	STC	New

5. SURFACE CONTROL EQUIPMENT: A double ram-type or annular BOP will be used. (See diagram attached.)

6. CIRCULATING MEDIUM:

0 - 350' Fresh water mud with gel or lime as needed for viscosity control.

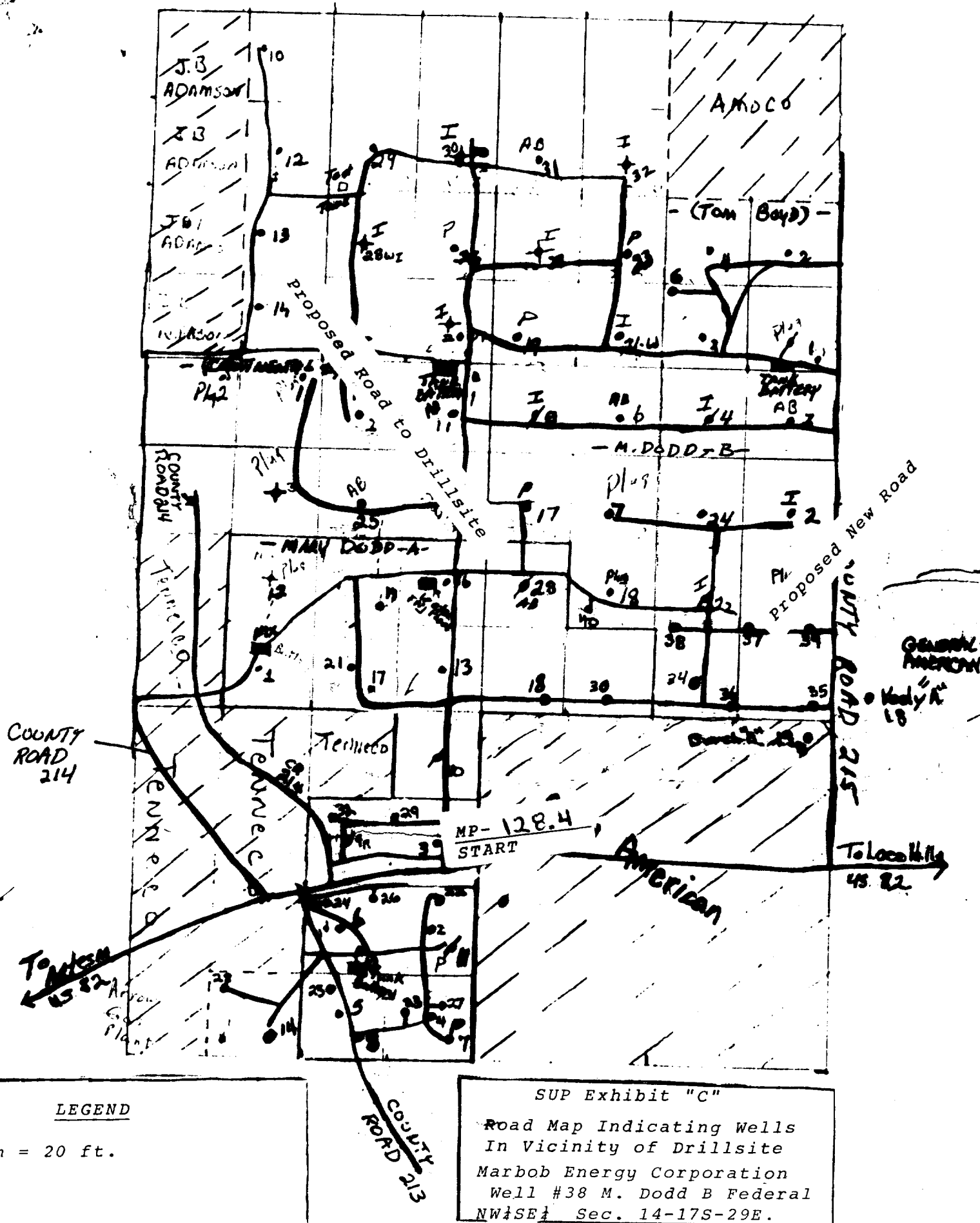
350'- 3450' Salt water mud, conditioned as necessary for control of viscosity and water loss or gain.

7. AUXILIARY EQUIPMENT: Drill string safety valve.

8. LOGGING PROGRAM: CNL-FDC W/GR Log will be run to TD.

9. ABNORMAL PRESSURES, TEMPERATURES OR GASES: A water flow may be encountered in the salt section.

10. ANTICIPATED STARTING DATE: It is planned that operations will commence about March 26, 1984. Duration of drilling, testing and completion operations should be one to four weeks..



14-17-29

5/20/25 SE/4 14-17-29

NY 2525514 14-17-28

LEGEND:

1 cm = 77.65'
(Prior to reduction)

Proposed Powerline

Existing Powerline

Proposed Location

Proposed New Road

