

UNITED STATES
DEPARTMENT OF THE INTERIOR
GEOLOGICAL SURVEY

APPLICATION FOR PERMIT TO DRILL, DEEPEN, OR PLUG BACK

1a. TYPE OF WORK

DRILL ☒DEEPEN ☐PLUG BACK ☐

b. TYPE OF WELL

OIL
WELL ☒GAS
WELL ☐

OTHER

SINGLE
ZONE ☒MULTIPLE
ZONE ☐

2. NAME OF OPERATOR

Marbob Energy Corporation

3. ADDRESS OF OPERATOR

P.O. Drawer 217, Artesia, N.M. 88210

4. LOCATION OF WELL (Report location clearly and in accordance with any State requirements.)

At surface

2615 FSL 1750 FWL

At proposed prod. zone

Same

14. DISTANCE IN MILES AND DIRECTION FROM NEAREST TOWN OR POST OFFICE*

20 air miles east of Artesia, N.M. 88210

15. DISTANCE FROM PROPOSED*

LOCATION TO NEAREST

PROPERTY OR LEASE LINE, FT.

(Also to nearest drig. unit line, if any)

1650'

18. DISTANCE FROM PROPOSED LOCATION*

TO NEAREST WELL, DRILLING, COMPLETED,
OR APPLIED FOR, ON THIS LEASE, FT.

635'

16. NO. OF ACRES IN

1480

19. PROPOSED DEPTH

3450'

17. NO. OF ACRES ASSIGNED
TO THIS WELL

40

20. ROTARY OR CABLE TOOLS

Rotary

21. ELEVATIONS (Show whether DF, RT, GR, etc.)

3610.8'

22. APPROX. DATE WORK WILL START*

6/15/84

23.

PROPOSED CASING AND CEMENTING PROGRAM

SIZE OF HOLE	SIZE OF CASING	WEIGHT PER FOOT	SETTING DEPTH	QUANTITY OF CEMENT
12 1/4"	8 5/8"	24#	350'	Sufficient to circulate
7 7/8"	5 1/2"	15.50#	3450'	450 sax, to base of salt

Pay zone will be selectively perforated and stimulated as needed for optimum production.

Attached are: 1. Location & acreage dedication plat
2. Supplemental drilling data
3. Surface use plan

RECEIVED BY

JUL 17 1984

O. C. D.

ARTESIA, OFFICE

Post ID-1
7-20-84
APZ + RK

IN ABOVE SPACE DESCRIBE PROPOSED PROGRAM: If proposal is to deepen or plug back, give data on present productive zone and proposed new productive zone. If proposal is to drill or deepen directionally, give pertinent data on subsurface locations and measured and true vertical depths. Give blowout preventer program, if any.

24.

SIGNED

TITLE Production Clerk

DATE 5/30/84

(This space for Federal or State office use)

PERMIT NO.

APPROVAL DATE

AREA MANAGER

CARLSBAD RESOURCE AREA

APPROVED BY

CONDITIONS OF APPROVAL, IF ANY:

DATE

7-16-84

APPROVAL SUBJECT TO
GENERAL REQUIREMENTS AND
SPECIAL STIPULATIONS
ATTACHED

*See Instructions On Reverse Side

NEW MEXICO OIL CONSERVATION COMMISSION
WELL LOCATION AND ACREAGE DEDICATION PLAT

Form C-102
Supersedes C-128
Effective 1-1-65

All distances must be from the outer boundaries of the Section.

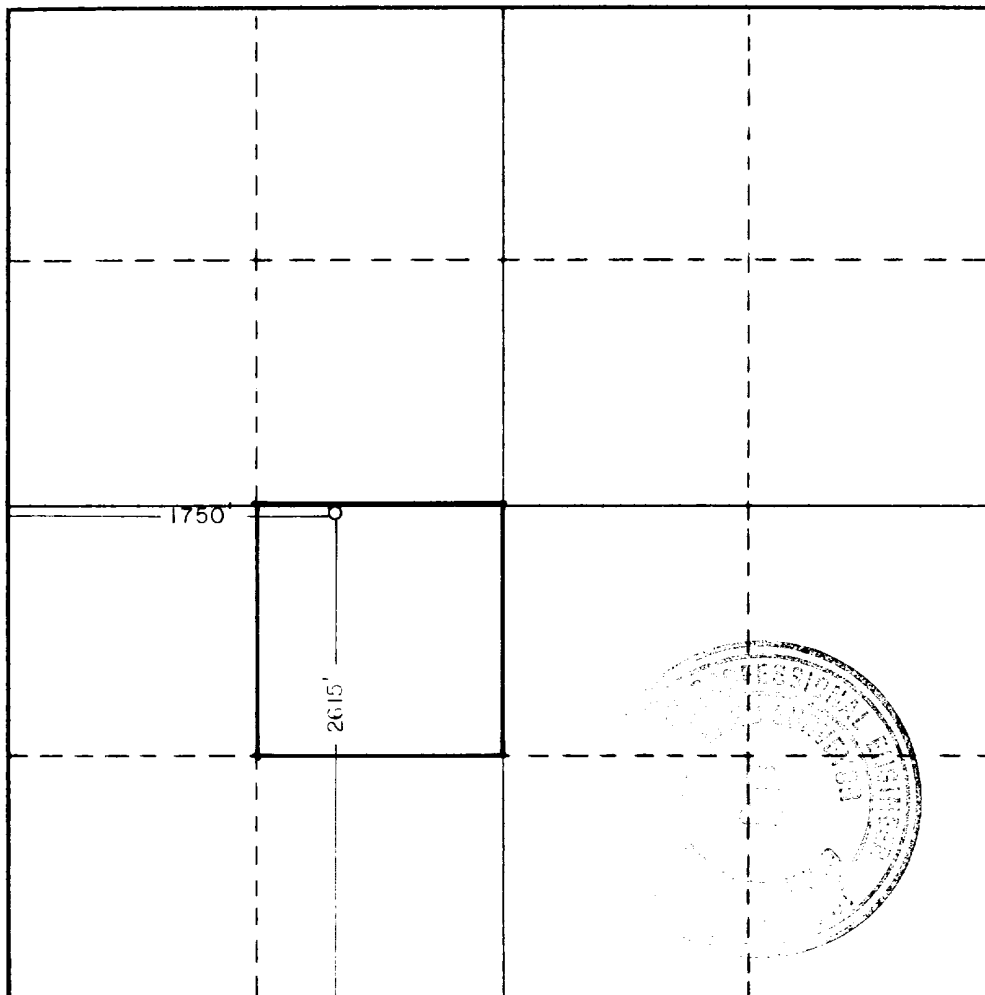
Operator MARBOB ENERGY CORPORATION			Lease M DODD B		Well No. 44
Init Letter K	Section 14	Township 17 SOUTH	Range 29 EAST	County EDDY	
Actual Footage Location of Well: 2615 feet from the SOUTH line and 1750 feet from the WEST line					
Ground Level Elev. 3610.8	Producing Formation San Andres	Pool Grayburg Jackson SR-Q-G-SA		Dedicated Acreage: 40 Acres	

1. Outline the acreage dedicated to the subject well by colored pencil or hachure marks on the plat below.
2. If more than one lease is dedicated to the well, outline each and identify the ownership thereof (both as to working interest and royalty).
3. If more than one lease of different ownership is dedicated to the well, have the interests of all owners been consolidated by communitization, unitization, force-pooling, etc?

☐ Yes ☐ No If answer is "yes," type of consolidation _____

If answer is "no," list the owners and tract descriptions which have actually been consolidated. (Use reverse side of this form if necessary.) _____

No allowable will be assigned to the well until all interests have been consolidated (by communitization, unitization, forced-pooling, or otherwise) or until a non-standard unit, eliminating such interests, has been approved by the Commission.



CERTIFICATION

I hereby certify that the information contained herein is true and complete to the best of my knowledge and belief.

Carolyn Orris

Name

Carolyn Orris

Position

Production Clerk

Company

Marbob Energy Corporation

Date

6/4/84

I hereby certify that the well location shown on this plat was plotted from field notes of actual surveys made by me or under my supervision, and that the same is true and correct to the best of my knowledge and belief.

Date Surveyed

MAY 24, 1984

Registered Professional Engineer and/or Land Surveyor

John W. West

Certificate No. JOHN W. WEST,

676

RONALD J. EIDSON,

3239



REGAN OFFSHORE INTERNATIONAL, INC.

Torrance,

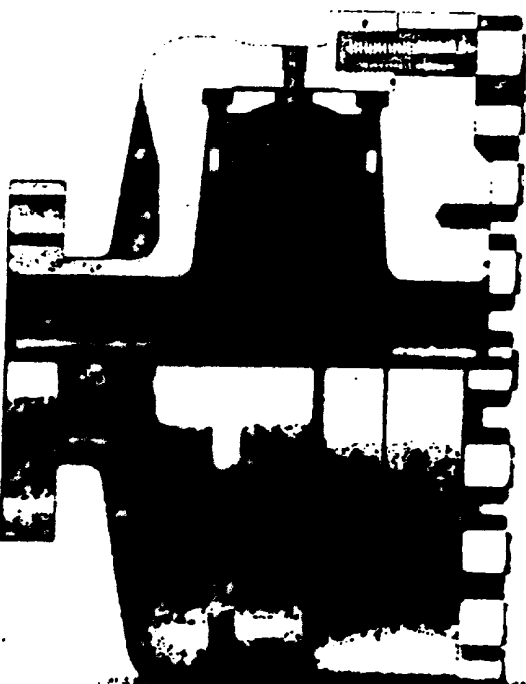
REGAN BLOWOUT PREVENTERS

Annular

The Regan Torus Blowout Preventer is used primarily on production and workover rigs for well control up to 3000 PSI working pressure.

DESIGN FEATURES

- a. The Torus Preventer is designed for minimum height to facilitate its use with production and workover rigs.
- b. The rubber packer will conform to any obstruction in the well bore. Sealing ability is not affected by minor damage to the inner bore.
- c. The packer will seal at open hole or full working pressure.
- d. The dual packer design increases the reliability of the preventer since the outer rubber is never exposed to the well bore. Under ordinary service, the outer packer is rarely replaced.

TORUS BLOWOUT PREVENTER
PATENTED

SPECIFICATIONS

Nominal Size	Test Pressure (psi)	DIMENSIONS (in.)				Weight (lb.)	End Flanges (1)	P/R X Ring Grooves	Side Outlet
		Outside Diameter	Inner Bore	Overall Height					
6	1500	24	20	39 1/2		140	2000.0	15	2 1/2" NPT
8	3000	36	30	51 1/2		205	2000.0	20	3 1/2" NPT

SUP Exhibit E

REGAN BLOWOUT PREVENTER
Marbob Energy Corporation
Well #44 M. Dodd "B" Federal
SE4NW4 Sec. 14-17S-29E

1

2023-01-01

2023-01-01

2023-01-01

SUPPLEMENTAL DRILLING DATA

MARBOB ENERGY CORPORATION
WELL #44 M. DODD "B" FEDERAL
NE 1/4 SW 1/4 SECTION 14-17-29E
EDDY COUNTY, NEW MEXICO
(DEVELOPMENT WELL)

1. SURFACE FORMATION: Quaternary.

2. ESTIMATED TOPS OF GEOLOGIC MARKERS:

Salt	360'	Queen	1815'
Base Salt	780'	Grayburg	2140'
Yates	930'	San Andres	2510'
Seven Rivers	1145'	Glorietta	3900'

3. ANTICIPATED POROSITY ZONES:

Water	Above 180'
Oil	2350 - 3450'

4. CASING DESIGN:

SIZE	INTERVAL	WEIGHT	GRADE	JOINT	CONDITION
8 5/8"	0-350'	24.0#	K-55	STC	New
5 1/2"	0-3450'	15.5#	K-55	STC	New

5. SURFACE CONTROL EQUIPMENT: A double ram-type ~~or annular~~ BOP will be used. (See diagram attached as Exhibit "E")

6. CIRCULATING MEDIUM:

0 - 350' Fresh water mud with gel or lime as needed for viscosity control.

350' - 3450- Salt water mud, conditioned as necessary for control of viscosity and water loss or gain.

7. AUXILIARY EQUIPMENT: Drill string safety valve.

8. LOGGING PROGRAM: CNL-FDC W/GR Log will be run to TD.

9. ABNORMAL PRESSURES, TEMPERATURES OR GASES: A water flow may be encountered in the salt section.

10. ANTICIPATED STARTING DATE: It is planned that operations will commence about June 15, 1984. Duration of drilling, testing and completion operations should be one to four weeks.

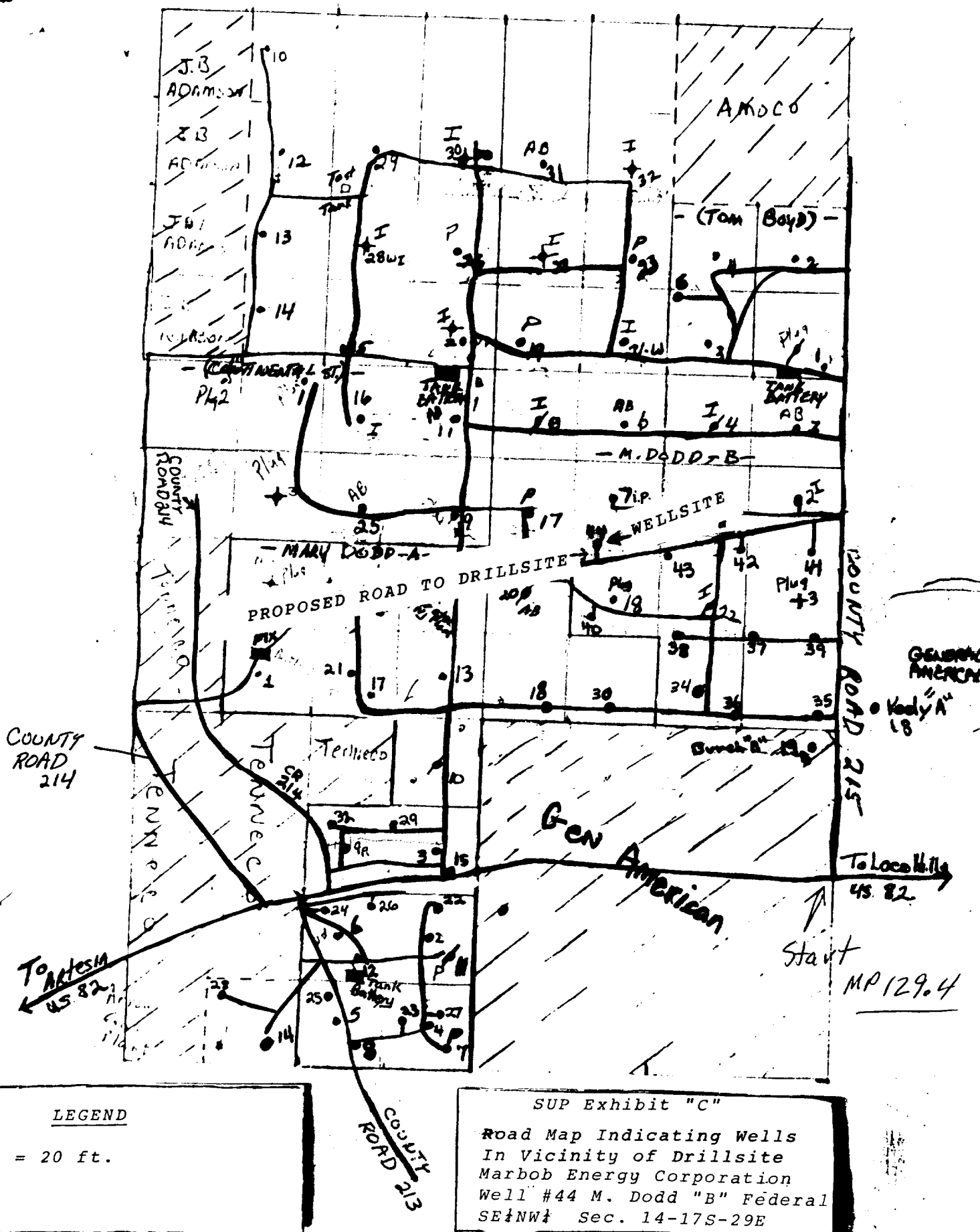
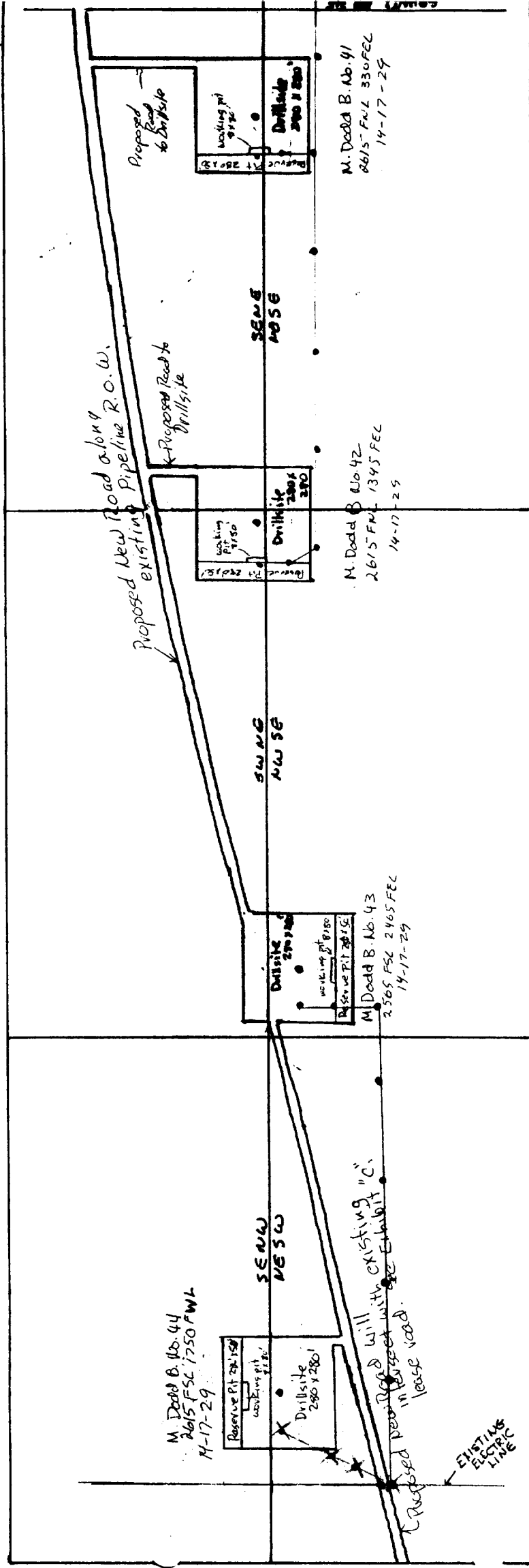


EXHIBIT "D"

Sketch of Well Pad, Electric Lines and New Road
T-17S, R-29E, Section 14



1 cm = 116.47'
(prior to reduction)
Proposed Powerline

LEGEND:
Existing Powerline
Proposed Location

Proposed New Load
New Poles to be inserted

