

UNITED STATES  
DEPARTMENT OF THE INTERIOR  
GEOLOGICAL SURVEY

## APPLICATION FOR PERMIT TO DRILL, DEEPEN, OR PLUG BACK

1a. TYPE OF WORK <b>DRILL</b> <input checked="" type="checkbox"/> <b>DEEPEN</b> <input type="checkbox"/> <b>PLUG BACK</b> <input type="checkbox"/>			5. LEASE DESIGNATION AND SERIAL NO. LC-028731 (A)		
b. TYPE OF WELL OIL WELL <input checked="" type="checkbox"/> GAS WELL <input type="checkbox"/> OTHER <input type="checkbox"/>			6. IF INDIAN, ALLOTTEE OR TRIBE NAME		
2. NAME OF OPERATOR Marbob Energy Corporation			7. UNIT AGREEMENT NAME		
3. ADDRESS OF OPERATOR P.O. Drawer 217, Artesia, N.M. 88210			8. FARM OR LEASE NAME M. Dodd "A"		
4. LOCATION OF WELL (Report location clearly and in accordance with any State requirements.) At surface 100 FNL 330 FEL At proposed prod. zone Same			9. WELL NO. 34		
14. DISTANCE IN MILES AND DIRECTION FROM NEAREST TOWN OR POST OFFICE* 20 air miles east of Artesia, N.M. 88210			10. FIELD AND POOL, OR WILDCAT Grayburg Jackson		
15. DISTANCE FROM PROPOSED* LOCATION TO NEAREST PROPERTY OR LEASE LINE, FT. (Also to nearest drlg. unit line, if any) 100'			11. SEC., T., R., N., OR S.E. AND SURVEY OR AREA Sec. 22-T17S-R29E		
16. NO. OF ACRES IN LEASE 600			12. COUNTY OR PARISH Eddy		
17. NO. OF ACRES ASSIGNED TO THIS WELL 40			13. STATE N.M.		
18. DISTANCE FROM PROPOSED* LOCATION TO NEAREST WELL, DRILLING, COMPLETED, OR APPLIES FOR, ON THIS LEASE, FT. 660'			19. PROPOSED DEPTH 3450'		
20. ROTARY OR CABLE TOOLS Rotary			21. APPROX. DATE WORK WILL START* 8/1/84		
21. ELEVATIONS (Show whether DF, RT, GR, etc.) 3580.5' GR			22. APPROX. DATE WORK WILL START*		

## 23. PROPOSED CASING AND CEMENTING PROGRAM

SIZE OF HOLE	SIZE OF CASING	WEIGHT PER FOOT	SETTING DEPTH	QUANTITY OF CEMENT
12 1/4"	8 5/8"	24#	350'	Sufficient to circulate
7 7/8"	5 1/2"	15.50#	3450'	450 sax, to base of salt

Pay zone will be selectively perforated & stimulated as needed for optimum production.

Attached are: 1. Location & acreage dedication plat  
2. Supplemental drilling data  
3. Surface use plan

IN ABOVE SPACE DESCRIBE PROPOSED PROGRAM: If proposal is to deepen or plug back, give data on present productive zone and proposed new productive zone. If proposal is to drill or deepen directionally, give pertinent data on subsurface locations and measured and true vertical depths. Give blowout preventer program, if any.

24. SIGNED Carolyn Davis TITLE Production Clerk DATE 7/18/84  
(This space for Federal or State office use)

PERMIT NO. \_\_\_\_\_ APPROVAL DATE \_\_\_\_\_

APPROVED BY W. H. Hootch TITLE Geologist DATE 7-26-84  
CONDITIONS OF APPROVAL, IF ANY:

Subject to  
Like Approval  
by State

\*See Instructions On Reverse Side

APPROVAL SUBJECT TO  
GENERAL REQUIREMENTS AND  
SPECIAL STIPULATIONS  
ATTACHED

NE EXICO OIL CONSERVATION COMMISSIC  
WELL LOCATION AND ACREAGE DEDICATION PLAT

Form C-102  
Supersedes C-128  
Effective 1-1-65

All distances must be from the outer boundaries of the Section.

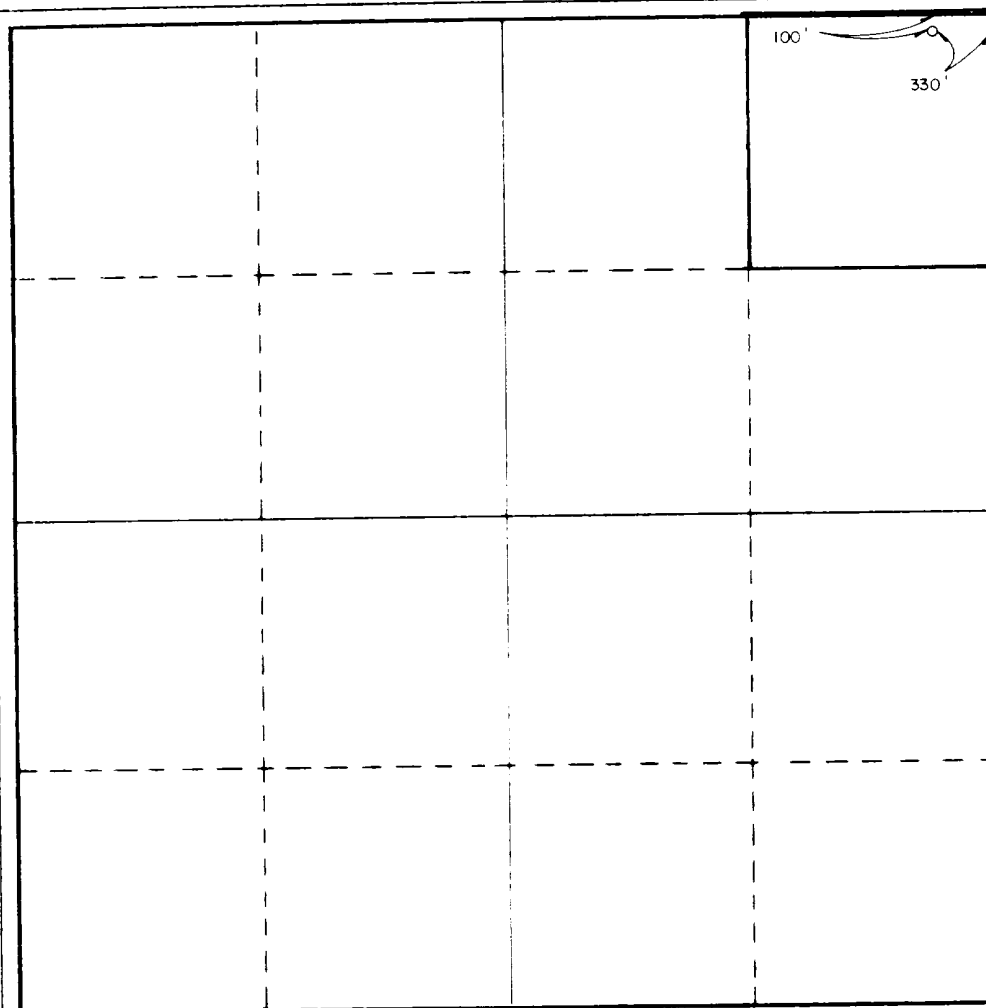
Operator Marbob Energy Corporation		Lease M Dodd A		Well No. 34
Unit Letter A	Section 22	Township 17 South	Range 29 East	County Eddy County
Actual Footage Location of Well: 100 feet from the North line and 330 feet from the East line				
Ground Level Elev. 3580.5	Producing Formation San Andres	Pool Grayburg Jackson SR-Q-G-SA	Dedicated Acreage: 40 Acres	

1. Outline the acreage dedicated to the subject well by colored pencil or hachure marks on the plat below.
2. If more than one lease is dedicated to the well, outline each and identify the ownership thereof (both as to working interest and royalty).
3. If more than one lease of different ownership is dedicated to the well, have the interests of all owners been consolidated by communitization, unitization, force-pooling, etc?

☐ Yes ☐ No If answer is "yes," type of consolidation \_\_\_\_\_

If answer is "no," list the owners and tract descriptions which have actually been consolidated. (Use reverse side of this form if necessary.) \_\_\_\_\_

No allowable will be assigned to the well until all interests have been consolidated (by communitization, unitization, forced-pooling, or otherwise) or until a non-standard unit, eliminating such interests, has been approved by the Commission.



CERTIFICATION

I hereby certify that the information contained herein is true and complete to the best of my knowledge and belief.

*Carolyn Orris*

Name

Carolyn Orris

Position

Production Clerk

Company

Marbob Energy Corporation

Date

5/31/84

I hereby certify that the well location shown on this plat was plotted from field notes of actual surveys made by me or under my supervision, and that the same is true and correct to the best of my knowledge and belief.

Date Surveyed

May 24, 1984

Registered Professional Engineer  
and/or Land Surveyor

*John W. West*

Certificate No. JOHN W. WEST, 676

RONALD J. EIDSON, 3239

0 330 660 990 1320 1650 1980 2310 2640 2000 1800 1600 1400 1200 1000 800 600 400 200 0

REGAN OFFSHORE INTERNATIONAL, INC.

Torrance,

ANNULAR

REGAN BLOWOUT PREVENTERS

The Regan Torus Blowout Preventer is used primarily on production and workover rigs for well control up to 3000 PSI working pressure.

DESIGN FEATURES

1. The Torus Preventer is designed for minimum height to facilitate its use with production and workover rigs.
2. The rubber packer will conform to any obstruction in the well bore. Sealing ability is not affected by minor damage to the inner bore.
3. The packer will seal on open, hole at full working pressure.
4. The dual packer design increases the reliability of the preventer since the outer liner is never exposed to the well bore. Under ordinary service, the outer packer is rarely replaced.



TORUS BLOWOUT PREVENTER  
PATENTED

SPECIFICATIONS

Nominal Size	Test Pressure (psi)	DIMENSIONS (in.)				Weight (lb.)	End Flanges (1)	B/X Ring Grooves	Side Outlet
		Outside Diameter	Inside Bore	Overall Height					
6	1200	24.0	21.0	34.0		140	2" x 1/2"	45	2" x 1/2"
8	1600	30.0	27.0	41.0		190	2" x 1/2"	45	2" x 1/2"
10	2000	36.0	33.0	48.0		240	2" x 1/2"	45	2" x 1/2"

1. 1/2" NPT  
2. 1/2" NPT  
3. 1/2" NPT  
4. 1/2" NPT  
5. 1/2" NPT  
6. 1/2" NPT  
7. 1/2" NPT  
8. 1/2" NPT  
9. 1/2" NPT  
10. 1/2" NPT

SUP Exhibit "F"

REGAN BLOWOUT PREVENTER  
Marbob Energy Corporation  
Well #34 M. Dodd "A" Federal  
NE#NE# Sec. 22-17S-29E

SUPPLEMENTAL DRILLING DATA

MARBOB ENERGY CORPORATION  
WELL #34 M. DODD "A" FEDERAL  
NE1/4NE1/4 SEC. 22-17S-29E  
EDDY COUNTY, NEW MEXICO  
(DEVELOPMENT WELL)

1. SURFACE FORMATION: Quaternary.

2. ESTIMATED TOPS OF GEOLOGIC MARKERS:

Salt	360'	Queen	1815'
Base Salt	780'	Grayburg	2140'
Yates	930'	San Andres	2510'
Seven Rivers	1145'	Glorietta	3900'

3. ANTICIPATED POROSITY ZONES:

Water	Above 180'
Oil	2350 - 3450'

4. CASING DESIGN:

SIZE	INTERVAL	WEIGHT	GRADE	JOINT	CONDITION
8 5/8"	0-350'	24.0#	K-55	STC	New
5 1/2"	0-3450'	15.5#	K-55	STC	New

5. SURFACE CONTROL EQUIPMENT: A double ram-type or annular BOP will be used. (See diagram attached as Exhibit "F")

6. CIRCULATING MEDIUM:

0 - 350' Fresh water mud with gel or lime as needed for viscosity control.

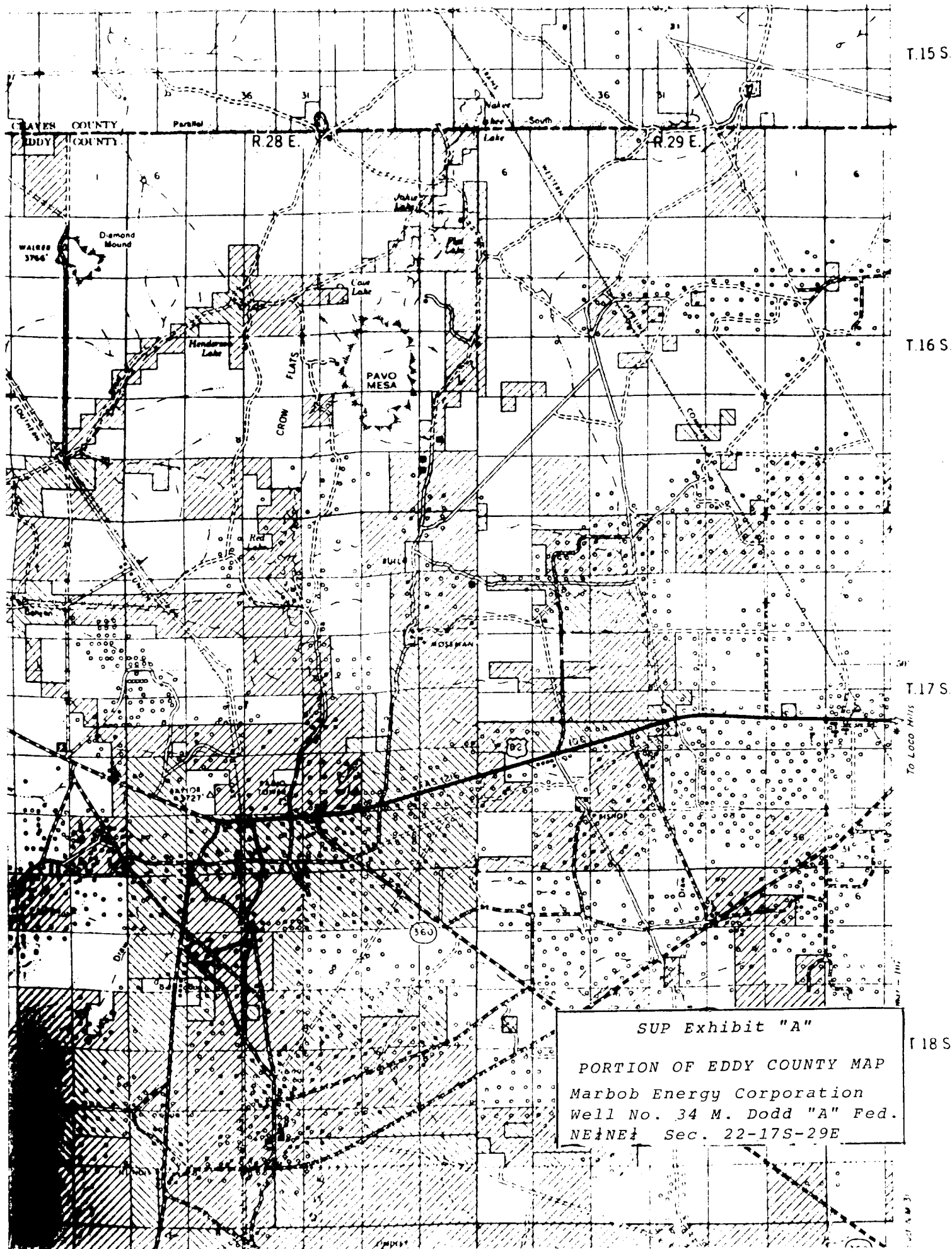
350'- 3450' Salt water mud, conditioned as necessary for control of viscosity and water loss or gain.

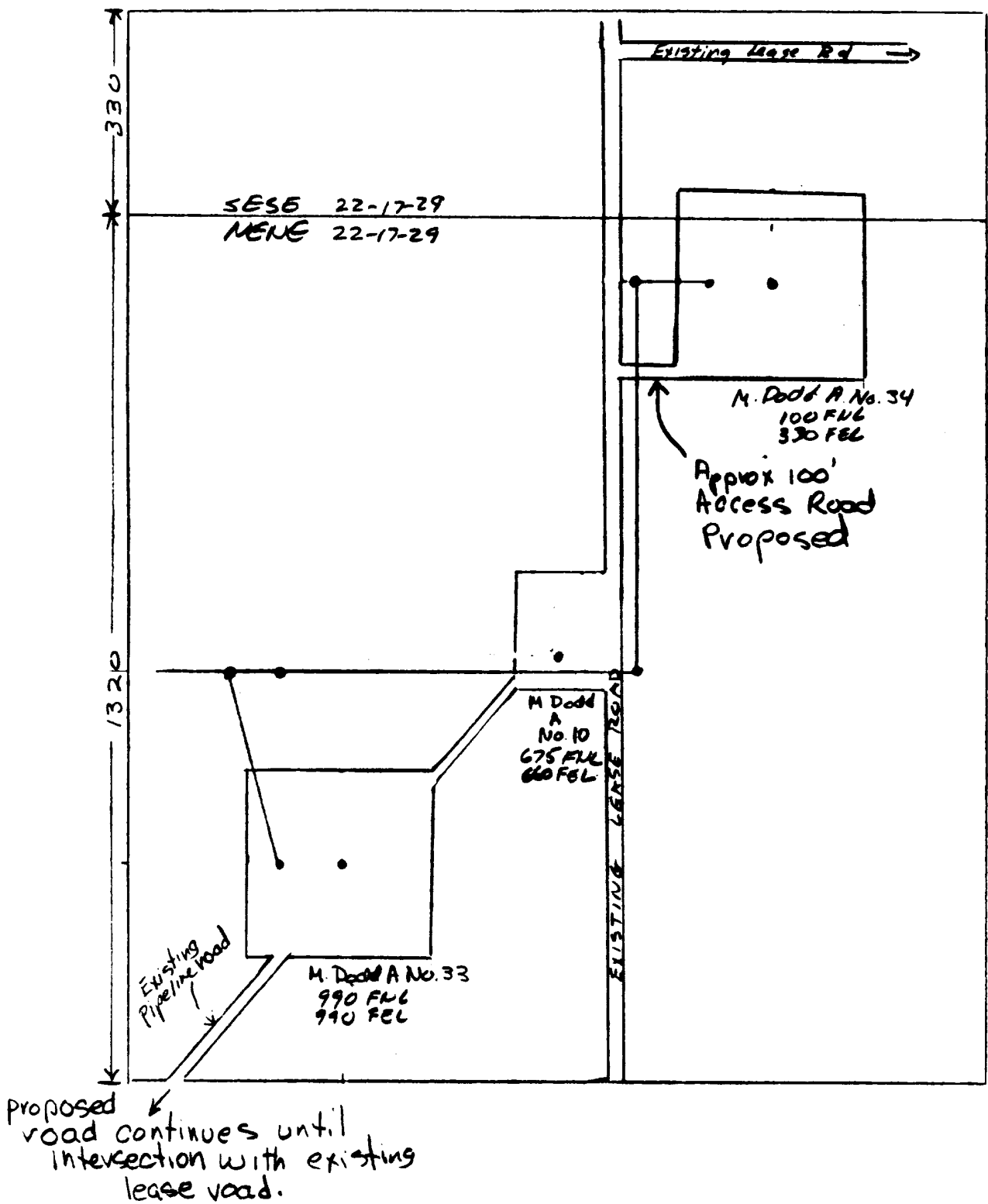
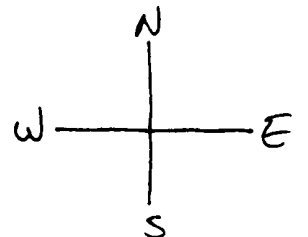
7. AUXILIARY EQUIPMENT: Drill string safety valve.

8. LOGGING PROGRAM: CNL-FDC W/GR Log will be run to TD.

9. ABNORMAL PRESSURES, TEMPERATURES OR GASES: A water flow may be encountered in the salt section.

10. ANTICIPATED STARTING DATE: It is planned that operations will commence about August 1, 1984. Duration of drilling, testing and completion operations should be one to four weeks.





LEGEND:

- 1 cm= 88 feet
- Primary Line
- Proposed Line
- Proposed Access Road

Exhibit "E"

Sketch of Electric Line  
and Proposed Access Road

Marbob Energy Corporation  
Well No. 34 M. Dodd "A" Fed.  
NE½NE½, Sec. 22-17S-29E