

UNITED STATES  
DEPARTMENT OF THE INTERIOR  
GEOLOGICAL SURVEYRECEIVED DATE  
(Other instructions on  
reverse side)

OCT 04 1984

O.C.D.

Form approved.  
Budget Bureau No. 42-R1425.

30-015-25038

LEASE DESIGNATION AND SERIAL NO.

LC-029419-A

IF INDIAN, ALLOTTEE OR TRIBE NAME

UNIT AGREEMENT NAME

Skelly Unit

FARM OR LEASE NAME

WELL NO.

156

FIELD AND POOL, OR WILDCAT

Grayburg-Jackson, Fren

SEC. T. R. M. OR BLK.  
AND SURVEY OR AREA

7-Rivers

22, 17S, 31E

COUNTY OR PARISH

Eddy

STATE

N.M.

## 1a. TYPE OF WORK

DRILL ☒DEEPEN ☐PLUG BACK ☐

## b. TYPE OF WELL

OIL  
WELL ☒GAS  
WELL ☐

OTHER

SINGLE  
ZONE ☐MULTIPLE  
ZONE ☒

## 2. NAME OF OPERATOR

GETTY OIL COMPANY

## 3. ADDRESS OF OPERATOR

P.O. BOX 730, HOBBS, NEW MEXICO 88240

## 4. LOCATION OF WELL (Report location clearly and in accordance with any State requirements.\*)

At surface

Unit Ltr. J, 2560 FSL and 2630 FEL

At proposed prod. zone

## 14. DISTANCE IN MILES AND DIRECTION FROM NEAREST TOWN OR POST OFFICE\*

5 miles southwest of Maljamar, New Mexico

## 15. DISTANCE FROM PROPOSED\*

LOCATION TO NEAREST  
PROPERTY OR LEASE LINE, FT.

3741

(Also to nearest drlg. unit line, if any)

## 16. NO. OF ACRES IN LEASE

4040

## 17. NO. OF ACRES ASSIGNED

TO THIS WELL

40

## 18. DISTANCE FROM PROPOSED LOCATION\*

TO NEAREST WELL, DRILLING, COMPLETED,  
OR APPLIED FOR, ON THIS LEASE, FT.

871

## 19. PROPOSED DEPTH

3900

## 20. ROTARY OR CABLE TOOLS

Rotary

## 21. ELEVATIONS (Show whether DF, RT, GR, etc.)

3845.6

## 22. APPROX. DATE WORK WILL START\*

September 1984

## 23.

## PROPOSED CASING AND CEMENTING PROGRAM

SIZE OF HOLE	SIZE OF CASING	WEIGHT PER FOOT	SETTING DEPTH	QUANTITY OF CEMENT
12 1/4	8 5/8	28#	700	450 CIRCULATE
7 7/8	5 1/2	15.5	3900	750 CIRCULATE

- The subject well will be drilled from surface to 700' with fresh water and gel additives to condition the hole for running casing. From 700 to 3900' (TD) a brine of sufficient weight and gel additives will be used to control formation pressures and condition the hole for electric logs and running casing.
- The pump and plug method will be used to cement all strings of casing. The 5 1/2" casing will have the top of the cement tied into the surface casing.

(This well will be downhole commingled in the Fren Seven Rivers and Grayburg Jackson Queen San Andres pools.)

IN ABOVE SPACE DESCRIBE PROPOSED PROGRAM: If proposal is to deepen or plug back, give data on present productive zone and proposed new productive zone. If proposal is to drill or deepen directionally, give pertinent data on subsurface locations and measured and true vertical depths. Give blowout preventer program, if any.

## 24.

SIGNED

Dale R. Crockett

TITLE

Area Superintendent

DATE

8/17/84

(This space for Federal or State office use)

PERMIT NO.

APPROVAL DATE

AREA MANAGER

CARLSBAD RESOURCE AREA

DATE

10-3-84

APPROVED BY

TITLE

Subject to  
Like Approval  
by State

NSL-1877 \*See Instructions On Reverse Side

Appv. 9-3-84 DHC R-7680

APPROVAL SUBJECT TO  
GENERAL REQUIREMENTS AND  
SPECIAL STIPULATIONS  
ATTACHED

0+6-NMOCD-Artesia  
1-NMOCD-Santa Fe  
1-Engr PWS  
1-Foreman  
1-H.O. Woods-Midland  
1-File

NEW MEXICO OIL CONSERVATION COMMISSION  
WELL LOCATION AND ACREAGE DEDICATION PLAT  
O. C. D.  
ARTESIA, OFFICE

—RECEIVED BY

AUG 20 1984

Form C-102  
Supersedes C-128  
Effective 1-1-65

All distances must be from the outer boundaries of the Section. ARTESIA, OFFICE

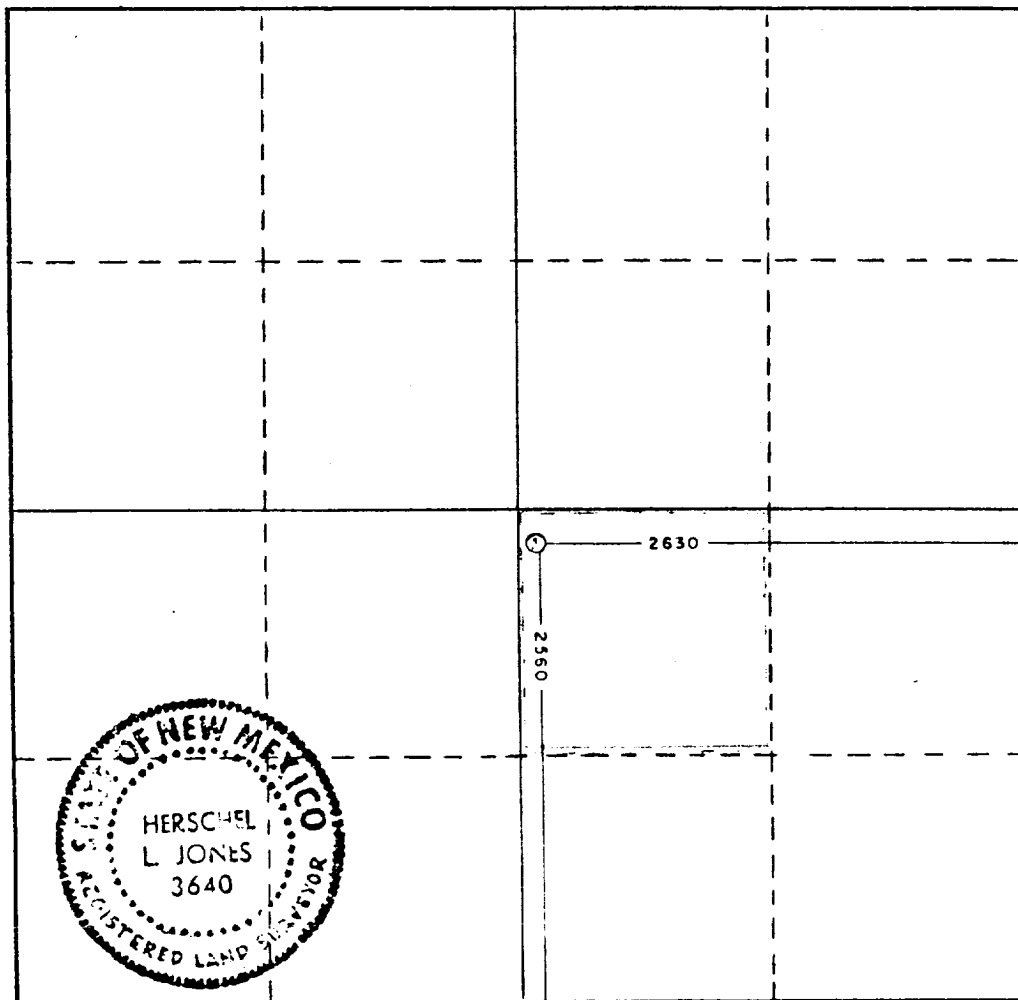
Operator <b>GETTY OIL COMPANY</b>		Lease <b>SKELLY UNIT</b>		Well No. <b>156</b>
Unit Letter <b>"J"</b>	Section <b>22</b>	Township <b>17 South</b>	Range <b>31 East</b>	County <b>Eddy County,</b>
Actual Footage Location of Well: <b>2560'</b> feet from the <b>South</b> line and <b>2630</b> feet from the <b>East</b> line				
Ground Level Elev. <b>3845.6</b>	Producing Formation <b>7-Rivers, Grayburg</b>		Pool Fren 7-Rivers & Grayburg Jackson	Dedicated Acreage: <b>40</b> Acres

1. Outline the acreage dedicated to the subject well by colored pencil or hatchure marks on the plat below.
2. If more than one lease is dedicated to the well, outline each and identify the ownership thereof (both as to working interest and royalty).
3. If more than one lease of different ownership is dedicated to the well, have the interests of all owners been consolidated by communitization, unitization, force-pooling, etc?

☐ Yes ☐ No If answer is "yes," type of consolidation \_\_\_\_\_

If answer is "no," list the owners and tract descriptions which have actually been consolidated. (Use reverse side of this form if necessary.) \_\_\_\_\_

No allowable will be assigned to the well until all interests have been consolidated (by communitization, unitization, forced-pooling, or otherwise) or until a non-standard unit, eliminating such interests, has been approved by the Commission.



CERTIFICATION

I hereby certify that the information contained herein is true and complete to the best of my knowledge and belief.

Dale R. Crockett

Name  
Area Superintendent

Position  
Getty Oil Company

Company  
August 10, 1984

Date  
*Donald J. Steinfeld*

I hereby certify that the well location shown on this plat was plotted from field notes of actual surveys made by me or under my supervision, and that the same is true and correct to the best of my knowledge and belief.

Date Surveyed  
July 27, 1984

Registered Professional Engineer  
and/or Land Surveyor

*Herschel L. Jones*  
Certificate No.  
3540

**NEW MEXICO OIL CONSERVATION COMMISSION  
WELL LOCATION AND ACREAGE DEDICATION PLAT**

Form C-102  
Supersedes C-128  
Effective 1-1-65

All distances must be from the outer boundaries of the Section.

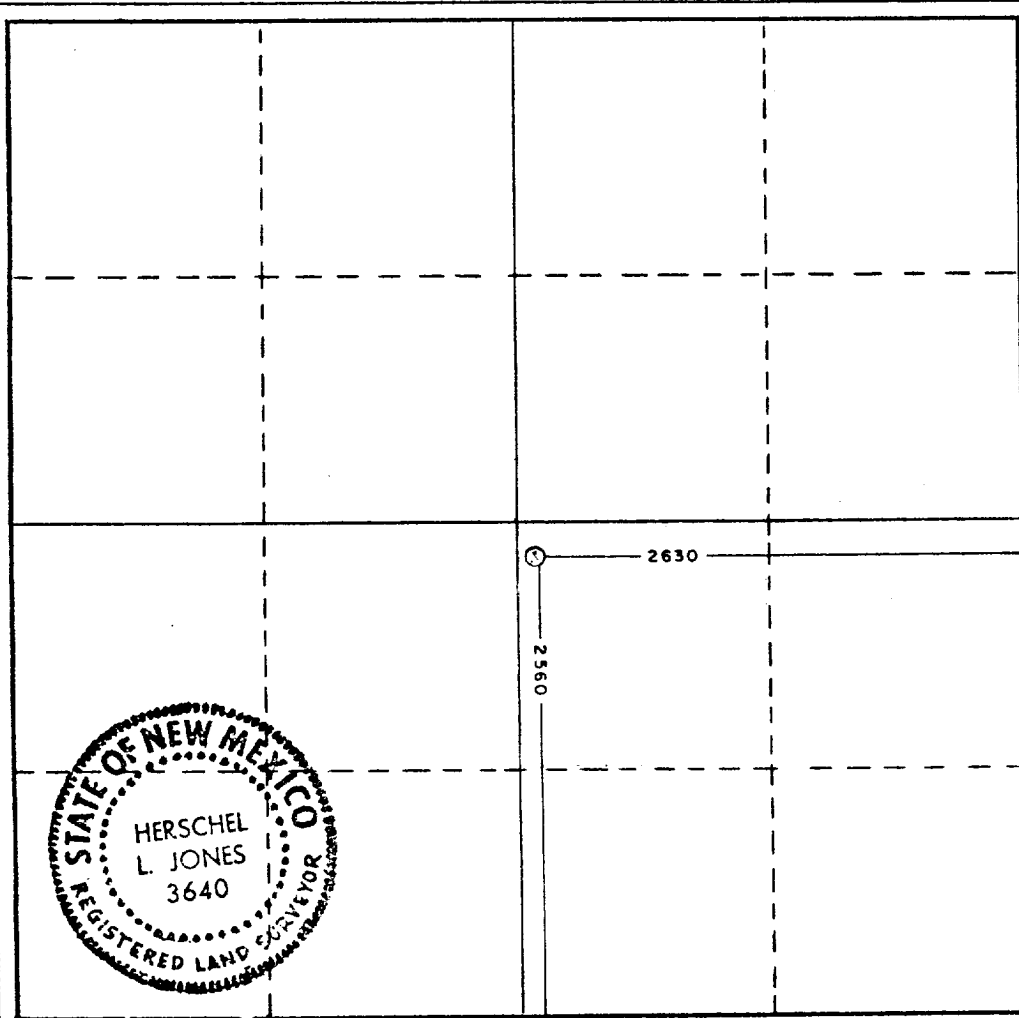
Operator <b>GETTY OIL COMPANY</b>			Lease <b>SKELLY UNIT</b>		Well No. <b>156</b>
Unit Letter <b>"J"</b>	Section <b>22</b>	Township <b>17 South</b>	Range <b>31 East</b>	County <b>Eddy County,</b>	
Actual Footage Location of Well: <div style="display: flex; justify-content: space-between;"> <span>2560' feet from the South line and</span> <span>2630 feet from the East line</span> </div>					
Ground Level Elev. <b>3845.6</b>	Producing Formation <b>Grayburg and 7-Rivers</b>	Pool <b>Grayburg-Jackson &amp; Fren 7-Rivers</b>	Dedicated Acreage: <b>40 Acres</b>		

1. Outline the acreage dedicated to the subject well by colored pencil or hatchure marks on the plat below.
2. If more than one lease is dedicated to the well, outline each and identify the ownership thereof (both as to working interest and royalty).
3. If more than one lease of different ownership is dedicated to the well, have the interests of all owners been consolidated by communitization, unitization, force-pooling, etc?

☐ Yes   ☐ No   If answer is "yes," type of consolidation \_\_\_\_\_

If answer is "no," list the owners and tract descriptions which have actually been consolidated. (Use reverse side of this form if necessary.) \_\_\_\_\_

No allowable will be assigned to the well until all interests have been consolidated (by communitization, unitization, forced-pooling, or otherwise) or until a non-standard unit, eliminating such interests, has been approved by the Commission.



**CERTIFICATION**

I hereby certify that the information contained herein is true and complete to the best of my knowledge and belief.

*Dale R. Crockett*  
Name

Dale R. Crockett

Position

Area Superintendent

Company

Getty Oil Company

Date

August 17, 1984

I hereby certify that the well location shown on this plat was plotted from field notes of actual surveys made by me or under my supervision, and that the same is true and correct to the best of my knowledge and belief.

Date Surveyed

July 27, 1984

Registered Professional Engineer and/or Land Surveyor

*Herschel L. Jones*  
Certificate No.

3540

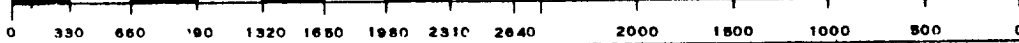
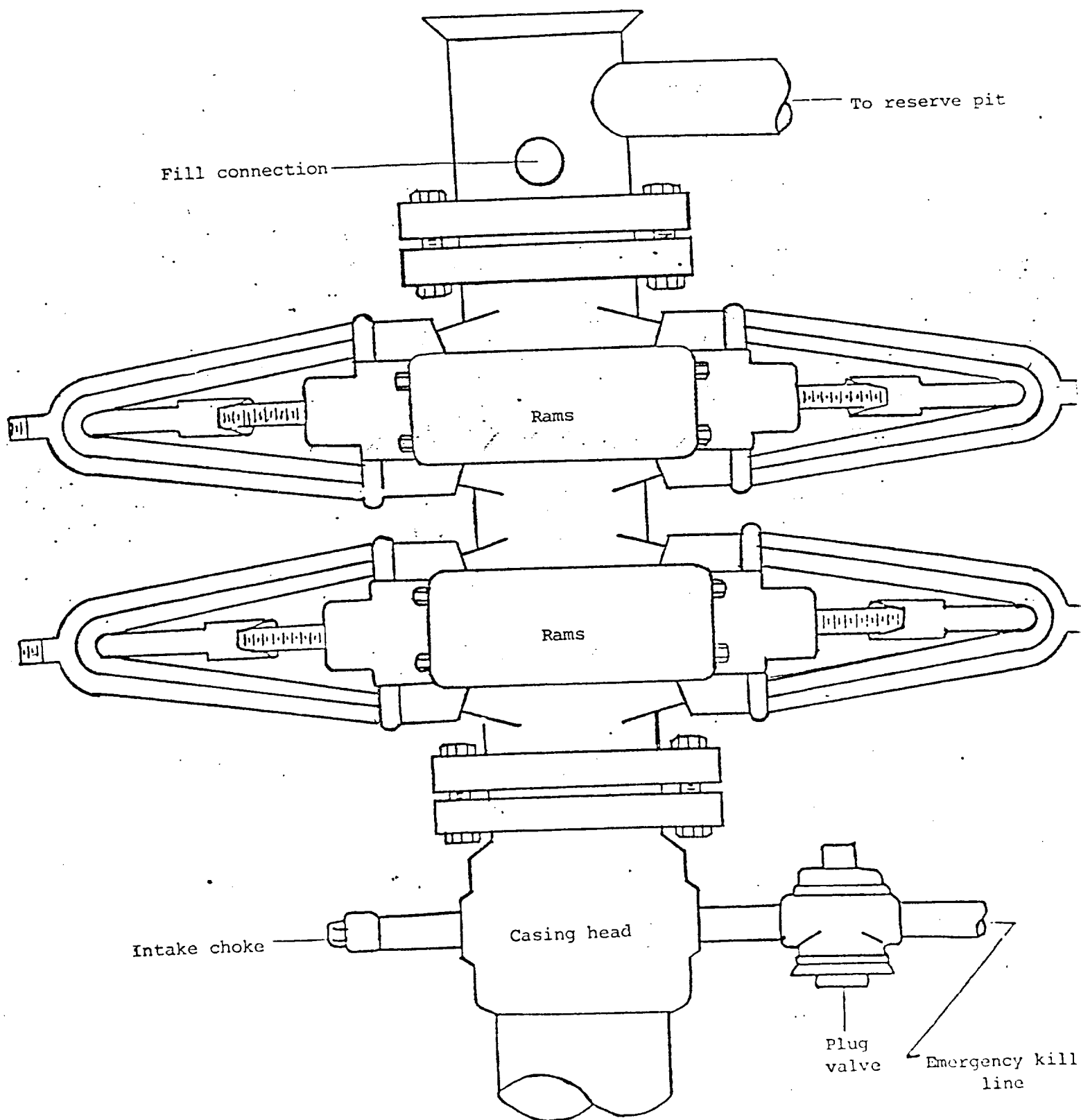


FIGURE 1



Getty Oil Company  
5000 psi working pressure  
Drilling control hookup

ADDITIONAL INFORMATION FOR  
 "APPLICATION FOR PERMIT TO DRILL"  
 GETTY OIL COMPANY  
 SKELLY UNIT WELL NO. 156

1. The geologic name of the surface formation is assignable to the Haplargids torripsamments association.
2. The estimated tops of important geologic markers are as follows:

<u>FORMATION</u>	<u>DEPTH FROM SURFACE</u>	<u>DEPTH SUBSEA</u>
Salt	604	+ 3241.6
Yates	1722	+ 2123.6
7-Rivers	2068	+ 1777.6
Grayburg-Jackson	3095	+ 750.6

3. The estimated depths at which anticipated water and oil could be encountered are:

<u>DEPTH</u>
0-604 Surface & red beds
604 - 1722 Salt
1722 - 2068 Yates - possible gas
2068 - 3095 7-Rivers - possible oil
3095 - 3900 Grayburg-Jackson possible oil

4. The proposed casing program is as follows.

<u>SIZE</u>	<u>GRADE</u>	<u>THREAD</u>	<u>WT.</u>	<u>TOP</u>	<u>BOTTOM</u>	<u>LENGTH</u>
8 5/8	H-40	8RST&C	28	Surface	700'	700'
5 1/2	K-55	8RST&C	15.5	Surface	3900'	3900'

5. The minimum specifications for pressure control equipment to be used are on Figure 1. The BOP stack will be tested to 5000 psi.
6. The drilling fluid from surface to 700 will be fresh water of sufficient gel to condition the hole for running casing. From 700' to 2100', a native mud system will be used with brine and LCM added for stability and seepage. From 2100' to 3900' a salt gel system will be used to condition the hole for logging and running casing.
7. The auxiliary equipment to be used is as follows:
  - a. Kelly cocks.
  - b. Monitoring equipment on the mud system.
  - c. Sub on the floor with a full opening valve to be stabbed into drill pipe when the Kelly is not in the string.
8. There are no anticipated drill stem tests or cores to be cut.



EXHIBIT "C"  
GETTY OIL COMPANY  
SKELLY UNIT WELL NO. 156  
DRILLING LOCATION LAYOUT  
SCHEMATIC

