

UNITED STATES  
DEPARTMENT OF THE INTERIOR OCT 04 1984

GEOLOGICAL SURVEY

## APPLICATION FOR PERMIT TO DRILL, DEEPEN, OR PLUG BACK

## 1a. TYPE OF WORK

DRILL ☒DEEPEN ☐PLUG BACK ☐

## b. TYPE OF WELL

OIL  
WELL ☒GAS  
WELL ☐

OTHER

SINGLE  
ZONE ☐MULTIPLE  
ZONE ☒

## 2. NAME OF OPERATOR

GETTY OIL COMPANY

## 3. ADDRESS OF OPERATOR

P.O. Box 730, Hobbs, N.M. 88240

## 4. LOCATION OF WELL (Report location clearly and in accordance with any State requirements.)\*

At surface

Unit Ltr. P 1310 FSL &amp; 1310 FEL

At proposed prod. zone

## 14. DISTANCE IN MILES AND DIRECTION FROM NEAREST TOWN OR POST OFFICE\*

5 miles southwest of Maljamar, New Mexico

## 15. DISTANCE FROM PROPOSED\*

LOCATION TO NEAREST  
PROPERTY OR LEASE LINE, FT.  
(Also to nearest drlg. unit line, if any)

2635

## 16. NO. OF ACRES IN LEASE

## 18. DISTANCE FROM PROPOSED LOCATION\*

TO NEAREST WELL, DRILLING, COMPLETED,  
OR APPLIED FOR, ON THIS LEASE, FT.

865

## 19. PROPOSED DEPTH

3900

## 21. ELEVATIONS (Show whether DF, RT, GR, etc.)

3837.1

## 23.

## PROPOSED CASING AND CEMENTING PROGRAM

SIZE OF HOLE	SIZE OF CASING	WEIGHT PER FOOT	SETTING DEPTH	QUANTITY OF CEMENT
12 1/4	8 5/8	28#	700 500	450
7 7/8	5 1/2	15.5	3900	750

- The subject well will be drilled from surface to 700' with fresh water and gel additives to condition the hole for running casing. From 700' to 3900' (TD) a brine of sufficient weight and gel additives will be used to control formation pressures and condition the hole for electric logs and running casing.
- The pump and plug method will be used to cement all strings of casing. The 5 1/2" casing will have the top of the cement tied into the surface casing.

(This well will be downhole commingled in the Fren-Seven Rivers and Grayburg-Jackson Queen San Andres pools.)

IN ABOVE SPACE DESCRIBE PROPOSED PROGRAM: If proposal is to deepen or plug back, give data on present productive zone and proposed new productive zone. If proposal is to drill or deepen directionally, give pertinent data on subsurface locations and measured and true vertical depths. Give blowout preventer program, if any.

## 24.

SIGNED

Dale R. Crockett

TITLE Area Superintendent

DATE 8/17/84

(This space for Federal or State office use)

PERMIT NO.

APPROVAL DATE

APPROVED BY

TITLE

AREA MANAGER

CARLSBAD RESOURCE AREA

DATE

CONDITIONS OF APPROVAL, IF ANY:

Subject to  
Like Approval  
by State

NSL-1879  
Appv. 9-3-84

\*See Instructions On Reverse Side

DHC R-7680

Approved 9-28-84

APPROVAL SUBJECT TO  
GENERAL REQUIREMENTS AND  
SPECIAL STIPULATIONS  
ATTACHED

RECEIVED DATE  
(Other instructions on  
reverse side)Form approved.  
Budget Bureau No. 42-R1425.

30-015-25040

5. LEASE DESIGNATION AND SERIAL NO.

C-029419(A)

6. IF INDIAN, ALLOTTEE OR TRIBE NAME

UNIT AGREEMENT NAME

Skelly Unit

7. FARM OR LEASE NAME

8. WELL NO.

158

10. FIELD AND POOL, OR WILDCAT

Grayburg-Jackson, Fren-7 /  
Rivers/11. SEC. T. R. M. OR BLK.  
AND SURVEY OR AREA

22, 17S, 31E

12. COUNTY OR PARISH

Eddy

13. STATE

NM

17. NO. OF ACRES ASSIGNED  
TO THIS WELL

40

20. ROTARY OR CABLE TOOLS

Rotary

22. APPROX. DATE WORK WILL START\*

September, 1984

High Inten

Forced TD!  
API 4-11-84  
10-12-84

0+6-NMOCD-Artesia  
1-File  
1-NMOCD-Santa Fe  
1-Engr PWS  
1-Foreman  
1-H.O. Woods-Midland

NEW MEXICO OIL CONSERVATION COMMISSION  
WELL LOCATION AND ACREAGE DEDICATION PLAT

All distances must be from the outer boundaries of the Section

RECEIVED BY

AUG 20 1984

O. C. D.

ARTESIA, OFFICE

Form C-102  
Supersedes C-128  
Effective 1-1-85

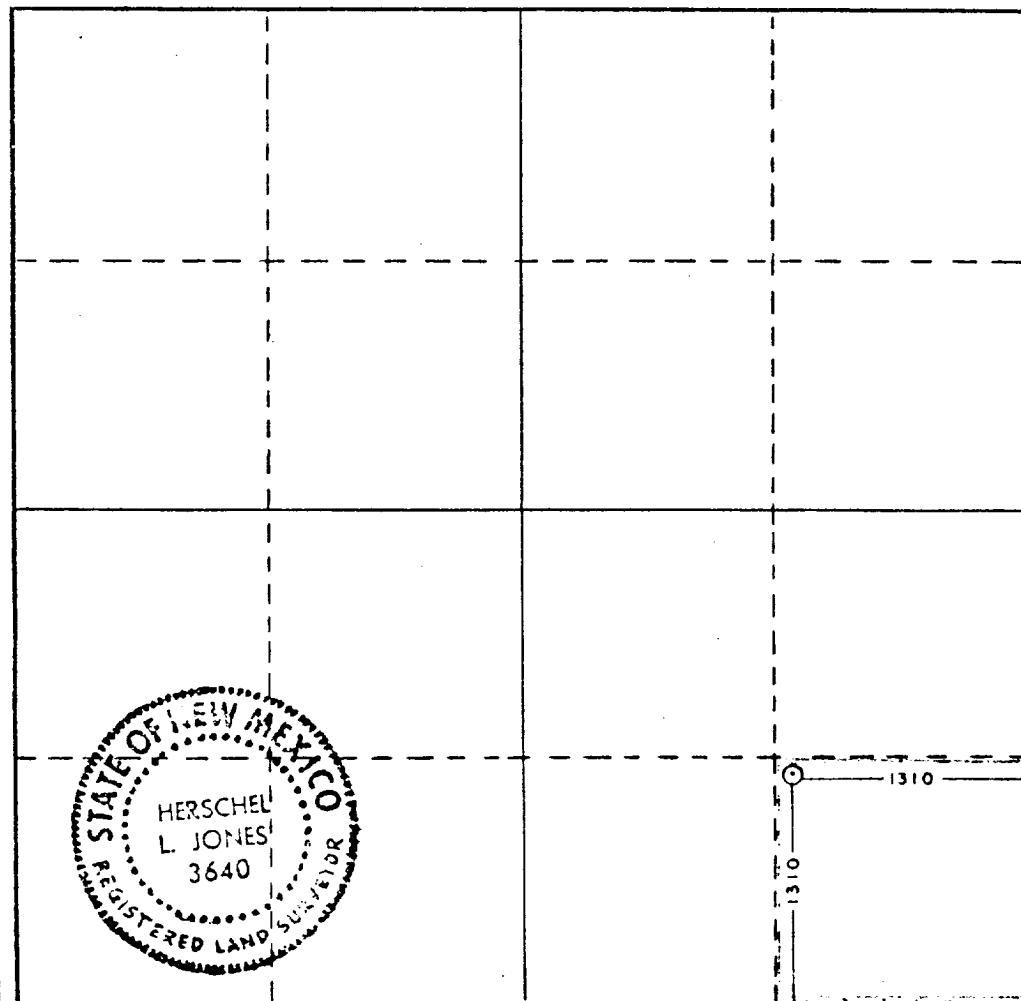
Operator <b>GETTY OIL COMPANY</b>		Lease <b>SKELLY UNIT</b>		Well No. <b>158</b>
Unit Letter <b>"p"</b>	Section <b>22</b>	Township <b>17 South</b>	Range <b>31 East</b>	County <b>Eddy</b>
Actual Footage Location of Well: <b>1310</b> feet from the <b>South</b> line and <b>1310</b> feet from the <b>East</b> line				
Ground Level Elev. <b>3837.1</b>	Producing Formation <b>7-Rivers, Grayburg</b>	Pool Fren 7-Rivers & Grayburg Jackson		Dedicated Acreage: <b>40</b> Acres

1. Outline the acreage dedicated to the subject well by colored pencil or hachure marks on the plat below.
2. If more than one lease is dedicated to the well, outline each and identify the ownership thereof (both as to working interest and royalty).
3. If more than one lease of different ownership is dedicated to the well, have the interests of all owners been consolidated by communitization, unitization, force-pooling, etc?

☐ Yes ☐ No If answer is "yes," type of consolidation \_\_\_\_\_

If answer is "no," list the owners and tract descriptions which have actually been consolidated. (Use reverse side of this form if necessary.) \_\_\_\_\_

No allowable will be assigned to the well until all interests have been consolidated (by communitization, unitization, forced-pooling, or otherwise) or until a non-standard unit, eliminating such interests, has been approved by the Commission.



CERTIFICATION

I hereby certify that the information contained herein is true and complete to the best of my knowledge and belief.

= Dale R. Crockett

Name

Area Superintendent

Position

Getty Oil Company

Company

August 10, 1984

Date

*Donald J. Stinner*

I hereby certify that the well location shown on this plat was plotted from field notes of actual surveys made by me or under my supervision, and that the same is true and correct to the best of my knowledge and belief.

Date Surveyed

July 27, 1984

Registered Professional Engineer  
and/or Land Surveyor

Certificate No.

3640

0 330 660 990 1320 1650 1980 2310 2640 2970 3300 3630 3960 4290 4620 4950 5280 5610 5940 6270 6600

**NEW MEXICO OIL CONSERVATION COMMISSION  
WELL LOCATION AND ACREAGE DEDICATION PLAT**

Form C-102  
Supersedes C-128  
Effective 1-1-65

All distances must be from the outer boundaries of the Section.

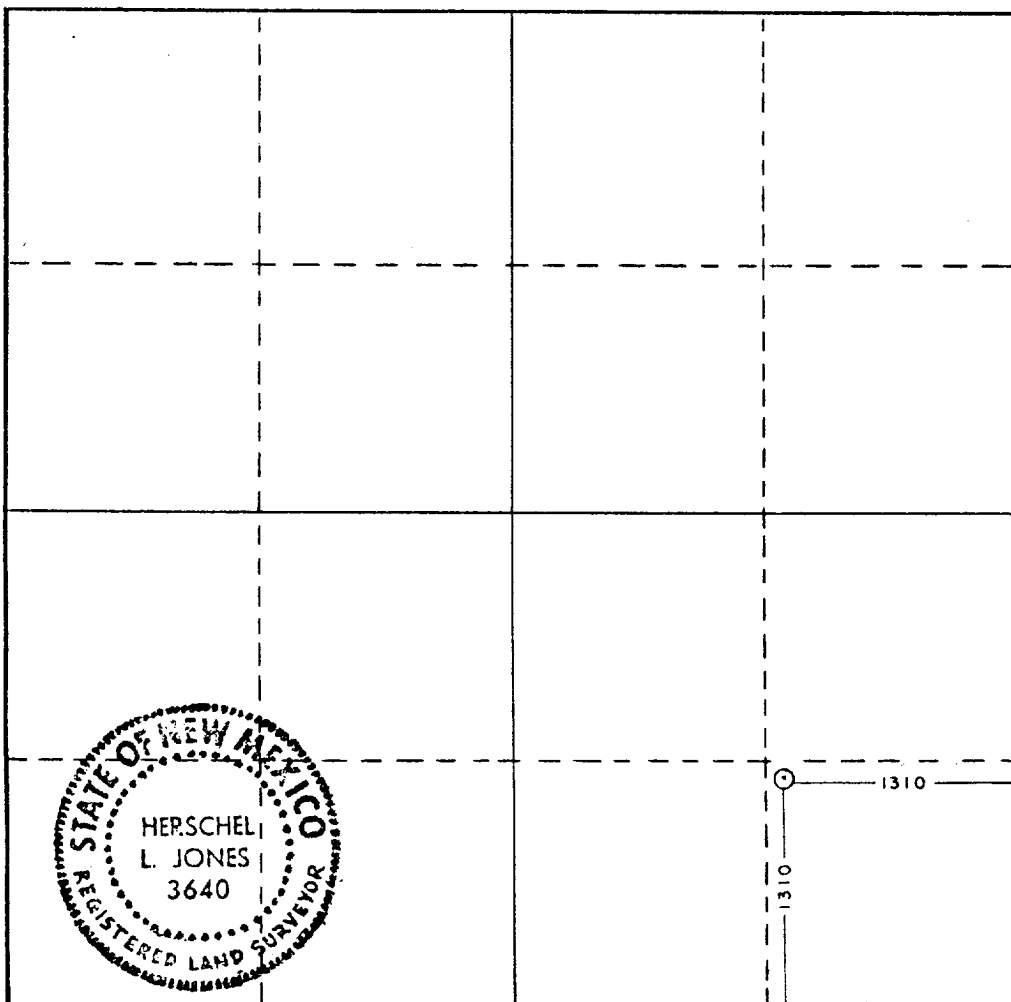
Operator <b>GETTY OIL COMPANY</b>			Lease <b>SKELLY UNIT</b>		Well No. <b>158</b>
Unit Letter <b>"p"</b>	Section <b>22</b>	Township <b>17 South</b>	Range <b>31 East</b>	County <b>Eddy</b>	
Actual Footage Location of Well: <b>1310</b> feet from the <b>South</b> line and <b>1310</b> feet from the <b>East</b> line					
Ground Level Elev. <b>3837.1</b>	Producing Formation <b>Grayburg, 7-Rivers</b>		Pool <b>Grayburg-Jackson &amp; Fren 7-Rivers</b>		Dedicated Acreage: <b>40</b> Acres

1. Outline the acreage dedicated to the subject well by colored pencil or hachure marks on the plat below.
2. If more than one lease is dedicated to the well, outline each and identify the ownership thereof (both as to working interest and royalty).
3. If more than one lease of different ownership is dedicated to the well, have the interests of all owners been consolidated by communitization, unitization, force-pooling, etc?

☐ Yes    ☐ No    If answer is "yes," type of consolidation \_\_\_\_\_

If answer is "no," list the owners and tract descriptions which have actually been consolidated. (Use reverse side of this form if necessary.) \_\_\_\_\_

No allowable will be assigned to the well until all interests have been consolidated (by communitization, unitization, forced-pooling, or otherwise) or until a non-standard unit, eliminating such interests, has been approved by the Commission.



**CERTIFICATION**

*I hereby certify that the information contained herein is true and complete to the best of my knowledge and belief.*

*Dale R. Crockett*

Name  
**Dale R. Crockett**

Position  
**Area Superintendent**

Company  
**Getty Oil Company**

Date  
**8/17/84**

*I hereby certify that the well location shown on this plat was plotted from field notes of actual surveys made by me or under my supervision, and that the same is true and correct to the best of my knowledge and belief.*

Date Surveyed  
**July 27, 1984**

Registered Professional Engineer and/or Land Surveyor

*Herschel L. Jones*

Certificate No.

**3640**

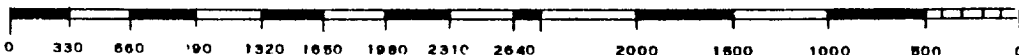
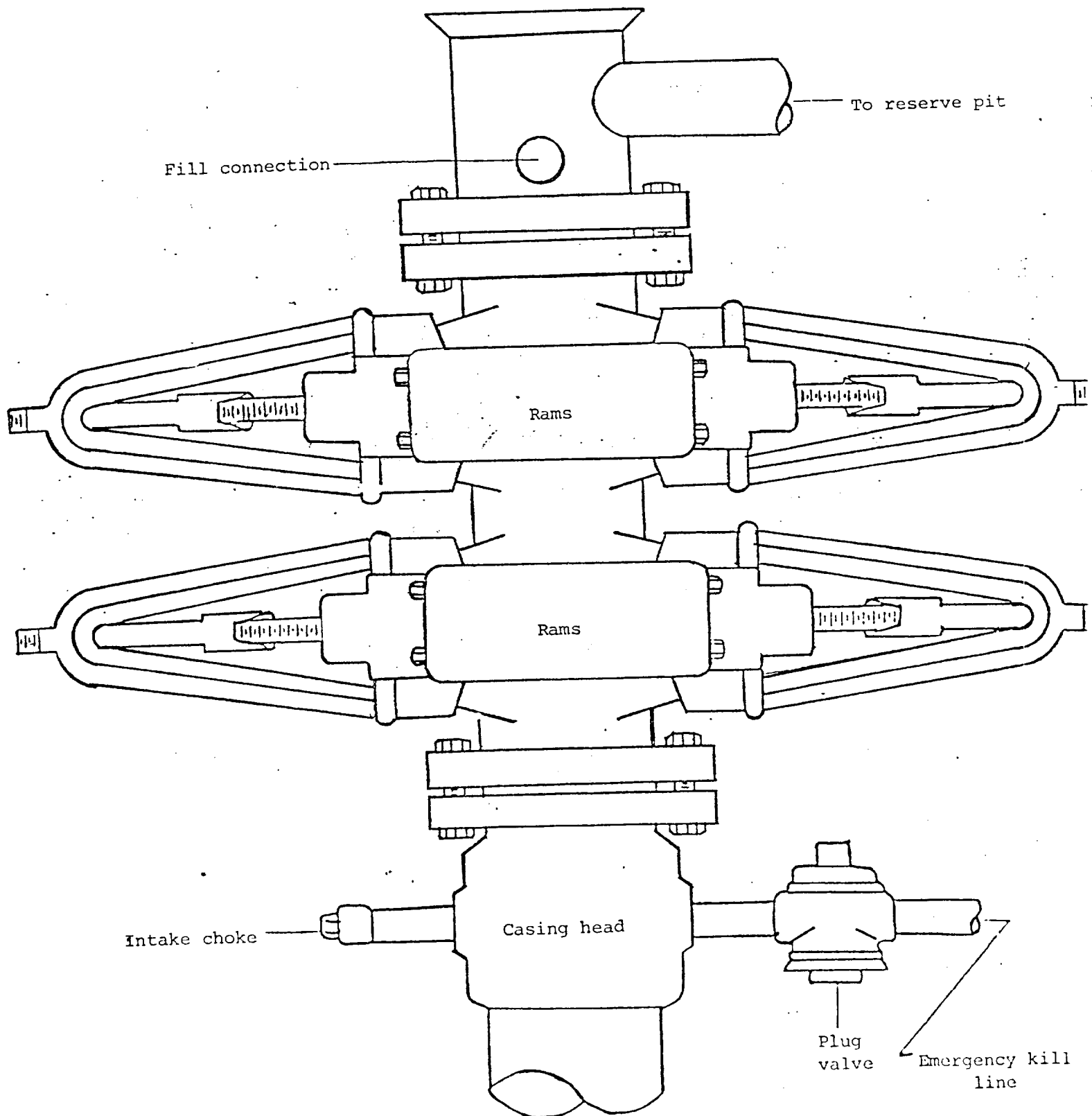


FIGURE 1



Getty Oil Company  
5000 psi working pressure  
Drilling control hookup

EXHIBIT "B"  
GETTY OIL COMPANY  
SKELLY UNIT WELL NO. 158  
1310 FSL & 1310 FEL  
Sec. 22, T17S, R31E

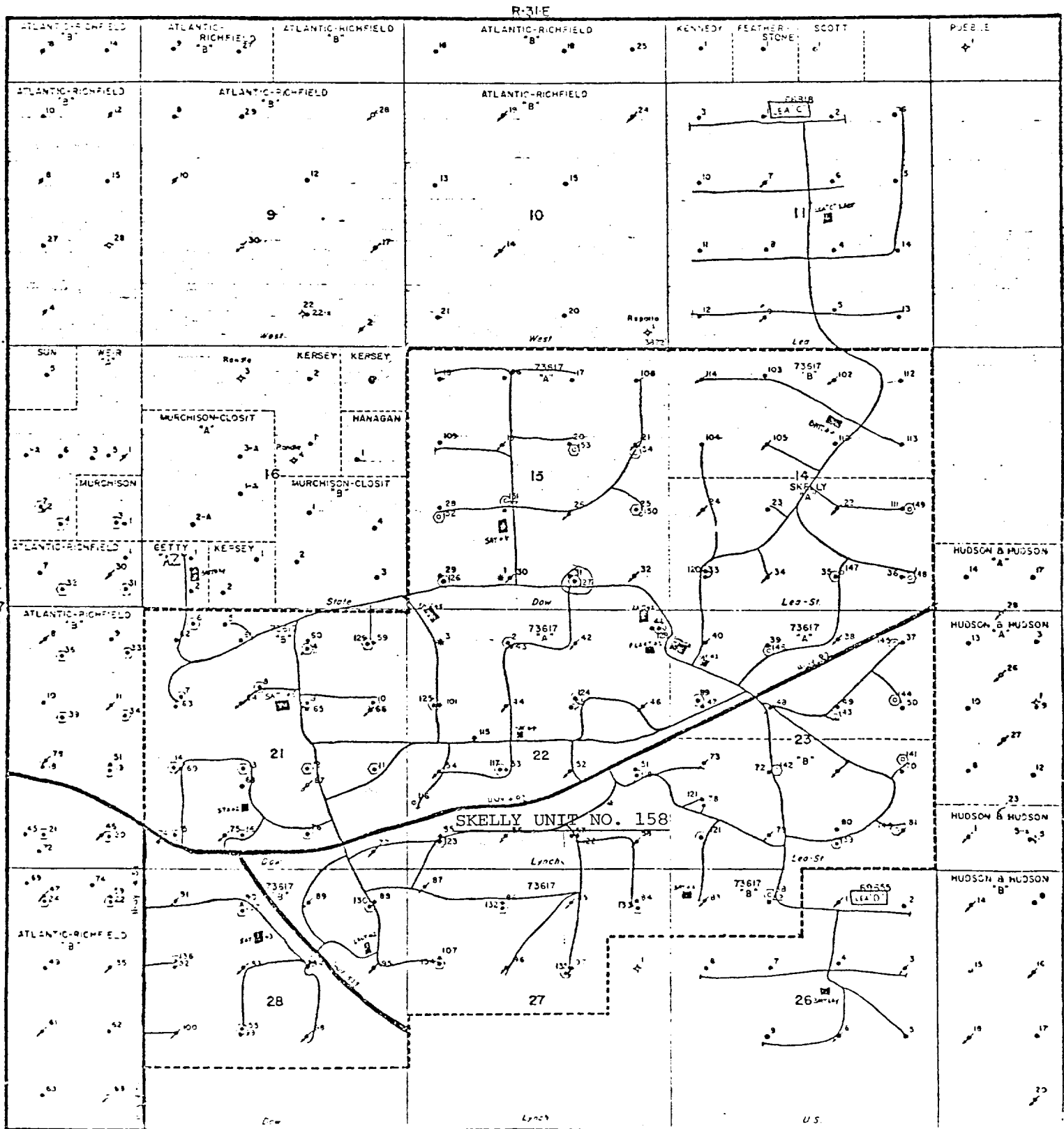


EXHIBIT "C"  
GETTY OIL COMPANY  
SKELLY UNIT NO. 158  
DRILLING LOCATION LAYOUT  
SCHEMATIC

