

RECEIVED BY

JUL 30 1985

O. C. D.

ARTESIA, OFFICE

NM OIL CONS. COMMISSION  
Drawer DD  
Artesia, NM 88210

UNITED STATES

DEPARTMENT OF THE INTERIOR

GEOLOGICAL SURVEY

## APPLICATION FOR PERMIT TO DRILL, DEEPEN, OR PLUG BACK

1a. TYPE OF WORK

DRILL ☒DEEPEN ☐PLUG BACK ☐

b. TYPE OF WELL

OIL WELL ☒GAS WELL ☐OTHER ☐SINGLE ZONE ☐MULTIPLE ZONE ☒

2. NAME OF OPERATOR

Texaco Producing Inc. ✓

3. ADDRESS OF OPERATOR

P. O. Box 728, Hobbs, New Mexico 88240

4. LOCATION OF WELL (Report location clearly and in accordance with any State requirements.)

At surface

Unit Letter N 1310' FSL and 2630' FWL

At proposed prod. zone

1310' FSL and 2630' FWL

14. DISTANCE IN MILES AND DIRECTION FROM NEAREST TOWN OR POST OFFICE\*

5 miles southwest of Maljamar, New Mexico

15. DISTANCE FROM PROPOSED\*

LOCATION TO NEAREST  
PROPERTY OR LEASE LINE, FT.  
(Also to nearest drg. unit line, if any)

2944'

16. NO. OF ACRES IN LEASE

4040

17. NO. OF ACRES ASSIGNED  
TO THIS WELL

40

18. DISTANCE FROM PROPOSED LOCATION\*

TO NEAREST WELL, DRILLING, COMPLETED,  
OR APPLIED FOR, ON THIS LEASE, FT.

926'

19. PROPOSED DEPTH

4050'

20. ROTARY OR CABLE TOOLS

Rotary

21. ELEVATIONS (Show whether DF, RT, GR, etc.)

3736.6 GR

22. APPROX. DATE WORK WILL START\*

September, 1985

23.

## PROPOSED CASING AND CEMENTING PROGRAM

SIZE OF HOLE	SIZE OF CASING	WEIGHT PER FOOT	SETTING DEPTH	QUANTITY OF CEMENT
15"	11-3/4"	42#	500'	400 sxs. <b>CIRCULATE</b>
11"	8-5/8"	24#	1925'	900 sxs.
7-7/8"	5-1/2"	15.5#	4050'	800 sxs.

\*This application was previously submitted by Getty Oil Company and was approved in October, 1984. The operator's name should be changed and a new casing and cementing programs are being submitted.

## Cementing Program

Surface Casing: 400 sxs. Class "H" with 1/4# flocele and 2% CaCl.

Intermediate Casing: 650 sxs 50/50 Pozmix Class "H" with 10# salt, 1/4# flocele  
followed by 250 sxs. Class "H" with 1/4# flocele.Production Casing: 1st Stage - 500 sxs. 50/50 Pozmix Class "H" with 1/4# flocele.  
2nd Stage - 300 sxs. Class "H".

(See Attached)

IN ABOVE SPACE DESCRIBE PROPOSED PROGRAM: If proposal is to deepen or plug back, give data on present productive zone and proposed new productive zone. If proposal is to drill or deepen directionally, give pertinent data on subsurface locations and measured and true vertical depths. Give blowout preventer program, if any.

24.

SIGNED

*W. A. Baker II*

TITLE

W. A. Baker II  
Dist. Drilling Manager

DATE

7-24-85

(This space for Federal or State office use)

PERMIT NO.

APPROVAL DATE

APPROVED BY

TITLE

DATE

7-29-85

CONDITIONS OF APPROVAL IF ANY:

All distances must be from the corner to corner of the Section.

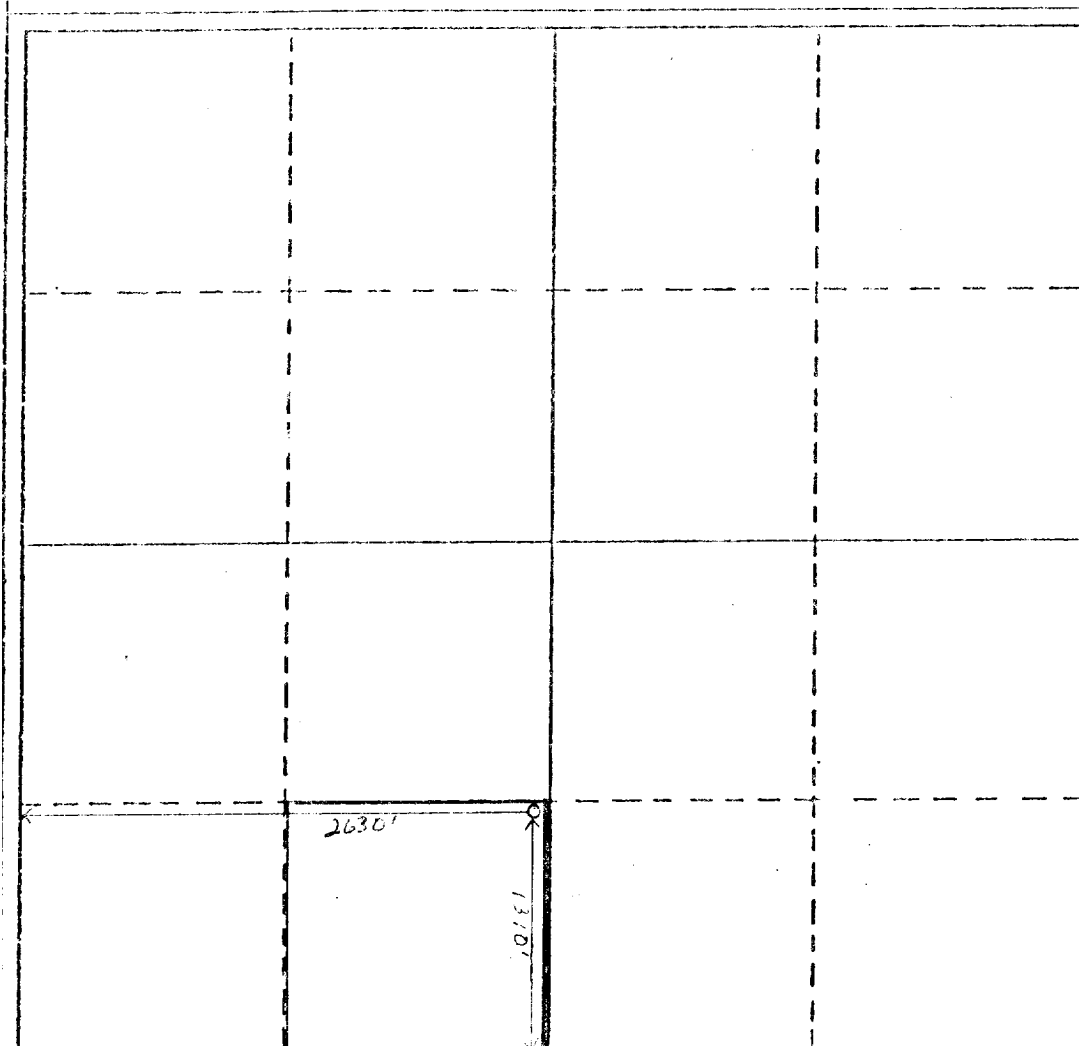
Operator <b>Texaco Producing, Inc.</b>			Lease <b>Skelly Unit</b>			Well No. <b>159</b>		
Unit Letter <b>"N"</b>	Section <b>22</b>	Township <b>17 South</b>	Range <b>31 East</b>	County <b>Eddy</b>				
Actual Footage Location of Well:								
1310 feet from the south line and		2630 feet from the west line						
Ground Level Elev. <b>3736.6</b>	Producing Formation <b>Grayburg, 7-Rivers</b>		Pool <b>Grayburg-Jackson, Fren 7-Rivers</b>			Dedicated Acreage: <b>40</b> Acres		

1. Outline the acreage dedicated to the subject well by colored pencil or hatchure marks on the plat below.
2. If more than one lease is dedicated to the well, outline each and identify the ownership thereof (both as to working interest and royalty).
3. If more than one lease of different ownership is dedicated to the well, have the interests of all owners been consolidated by communitization, unitization, force-pooling, etc?

☐ Yes ☐ No If answer is "yes," type of consolidation \_\_\_\_\_

If answer is "no," list the owners and tract descriptions which have actually been consolidated. (Use reverse side of this form if necessary.) \_\_\_\_\_

No allowable will be assigned to the well until all interests have been consolidated (by communitization, unitization, forced-pooling, or otherwise) or until a non-standard unit, eliminating such interests, has been approved by the Division.



#### CERTIFICATION

I hereby certify that the information contained herein is true and complete to the best of my knowledge and belief.

*W. A. Baker, II*

Name  
**W. A. Baker, II**

Position  
**Dist. Drilling Manager**

Company  
**Texaco Producing, Inc.**

Date  
**July 23, 1985**

I hereby certify that the well location shown on this plat was plotted from field notes of actual surveys made by me or under my supervision, and that the same is true and correct to the best of my knowledge and belief.

Date Surveyed

Registered Professional Engineer and/or Land Surveyor

Certificate No.

0 330 660 990 1320 1650 1980 2310 2640 2000 1500 1000 500 0

Texaco Producing Inc.  
Skelly Unit Well No. 159  
1310' FSL and 2630' FWL of Section 22, T17S, R31E

Mud Program

The well will be drilled with spud mud to a depth of 500' and with brine water from 500' to TD.

(This well will be downhole commingled in the Fren Seven-Rivers and Grayburg-Jackson Queen San Andres pools).