

W MEXICO OIL CONSERVATION COM
WELL LOCATION AND ACREAGE DEDICATION PLAT

Form C-102
Supersedes C-128
Effective 1-1-65

All distances must be from the outer boundaries of the Section

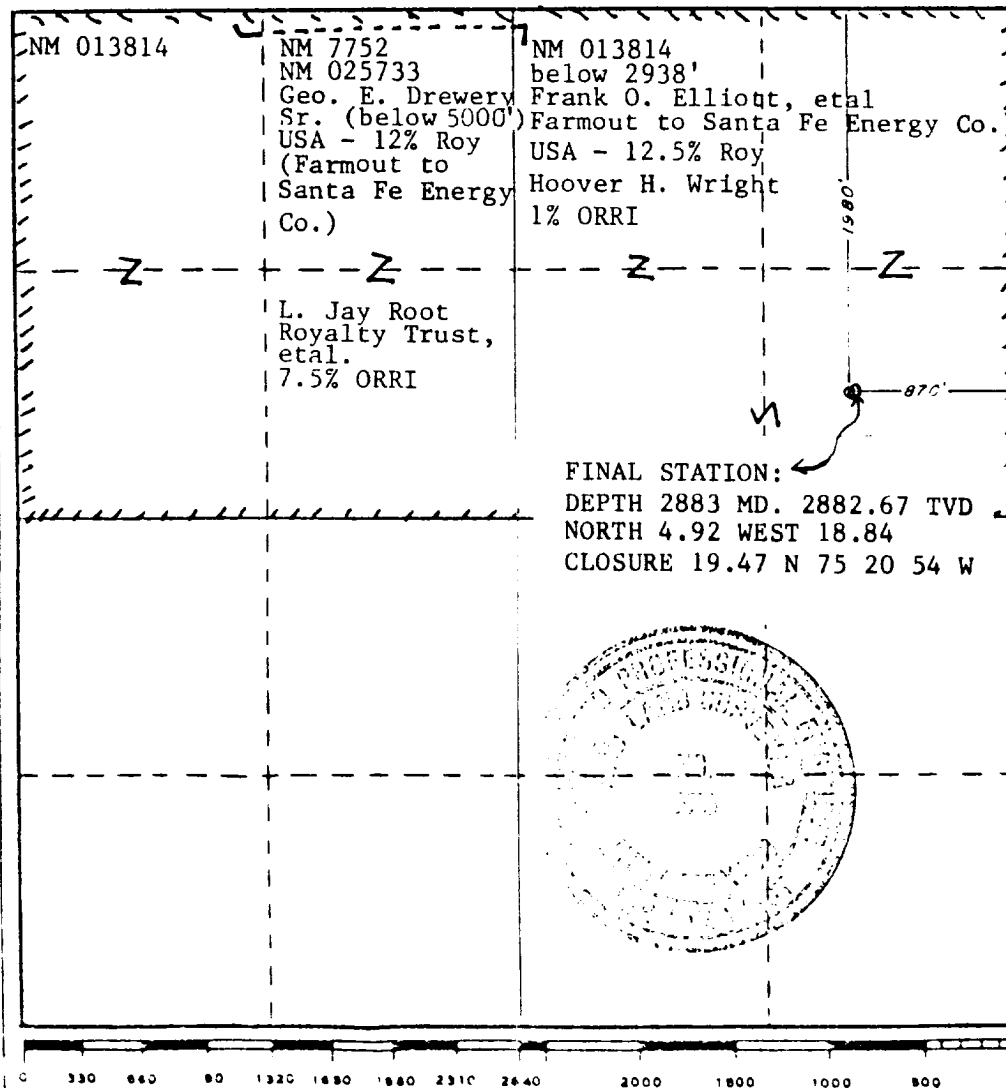
Operator SANTA FE ENERGY CO.			Lease EVANS FEDERAL COM.		Well No. 1
Init Letter H	Section 6	Township 17S	Range 30E	County EDDY	
Actual Footage Location of Well: 1980 feet from the NORTH line and 870 feet from the EAST line					
Ground Level Elev. 3687.6	Producing Formation Morrow	Pool Wildcat	Dedicated Acreage: 320 Acres		

- Outline the acreage dedicated to the subject well by colored pencil or hatchure marks on the plat below.
- If more than one lease is dedicated to the well, outline each and identify the ownership thereof (both as to working interest and royalty).
- If more than one lease of different ownership is dedicated to the well, have the interests of all owners been consolidated by communitization, unitization, force-pooling, etc?

☒ Yes ☐ No If answer is "yes," type of consolidation Communitization

If answer is "no," list the owners and tract descriptions which have actually been consolidated. (Use reverse side of this form if necessary.)

No allowable will be assigned to the well until all interests have been consolidated (by communitization, unitization, forced-pooling, or otherwise) or until a non-standard unit, eliminating such interests, has been approved by the Commission.



CERTIFICATION

I hereby certify that the information contained herein is true and complete to the best of my knowledge and belief.

Mike Burton

Name

Mike Burton

Position

Sr. Drilling Engineer

Company

Santa Fe Energy Company

Date

10-16-84

I hereby certify that the well location shown on this plat was plotted from field notes of actual surveys made by me or under my supervision, and that the same is true and correct to the best of my knowledge and belief.

Date Surveyed

10/9/84

Registered Professional Engineer
and/or Land Surveyor

John W. West

Certificate No. JOHN W. WEST, 676
RONALD J. EIDSON, 3239

RECEIVED
JAN -9 1985
O.C.U.
HOBBS OFFICE