

COUNTY **EDDY** FIELD **Grayburg-Jackson** STATE **NM**
 OPR **ANADARKO PROD** API **30-015-25110**
 NO **9** LEASE **Loco Hills "B" Federal** MAP
 Sec **9, T17S, R30E** CO-ORD
1460 FSL, 1310 FEL of Sec **3-1-10 NM**
2 mi NE/Loco Hills SPD **12-20-84** CMP **1-23-85**

CSC

8 5/8-442-500 sx
 5 1/2-3036-900 sx
 2 3/8-2857

WELL CLASS: INIT D FIN DO LSE CODE			
FORMATION	DATUM	FORMATION	DATUM
TD 3040 (SADR)		PBD 3030	

IP (Grayburg) Perfs 2624-2852 P 16 BOPD + 35 BW. Pot
 based on 24 hr test. GOR 200; gty 36

CONTR **Salazar**

OPRS ELEV **3691 GR**

SUBS

F.R. 11-26-84
 PD 2945 RT (Grayburg)
 1-2-85 TD 3040; WOCT
 No Cores or DST's
 1-15-85 TD 3040; PBD 3030; Swbg
 Perf (Loco Hills) 2624-2630, 2648-2652 w/2 SPF
 Perf (Metex) 2742-2746, 2772-2778, 2800-2802
 w/2 SPF
 Perf (Premier) 2848-2852 w/2 SPF
 Acid (2624-2852) 3350 gals (15%)
 1-22-85 TD 3040; PBD 3030; TOP
 Frac (2624-2852) 30,000 gals + 35,750# sd
 Ppd 10 BO + 11 BW in 24 hrs (2624-2852)
 1-24-85 TD 3040; PBD 3030; WOPT
 Ppd 16 BO + 35 BLW in 24 hrs (2624-2852)
 2-25-85 TD 3040; PBD 3030; Complete
 LOG TOPS: Salt 430, Base Salt 1090, Tansill
 1175, Yates 1290, Seven Rivers 1542, Queen
 2135, Grayburg 2552, San Andres 2866
 3-1-10 NM

EDDY
ANADARKO PROD

Grayburg-Jackson
9 Loco Hills "B" Federal
Sec 9, T17S, R30E

NM
Page #2

2-25-85 Continued
LOGS RUN: CNL, CDL, GRL, CL
Rig Released 12-28-84
3-2-85 COMPLETION ISSUED

3-1-10 NM
IC 30-015-70431-84

88210 UNITED STATES
DEPARTMENT OF THE INTERIOR
GEOLOGICAL SURVEY

SUBMIT TO THE STATE
RECEIVED
(Other instructions on
reverse side)

NOV 29 1984

30-015-25110
Form approved.
Budget Bureau No. 42-R1425.

APPLICATION FOR PERMIT TO DRILL, DEEPEN, OR PLUG BACK

1a. TYPE OF WORK
DRILL ☒ DEEPEN ☐ PLUG BACK ☐

b. TYPE OF WELL
OIL WELL ☒ GAS WELL ☐ OTHER ☐ SINGLE ZONE ☐ MULTIPLE ZONE ☐

2. NAME OF OPERATOR
Anadarko Production Company ✓

3. ADDRESS OF OPERATOR
P. O. Drawer 130, Artesia, New Mexico 88210

4. LOCATION OF WELL (Report location clearly and in accordance with any State requirements.)*
At surface 1460' FSL & 1310' FEL
At proposed prod. zone Same

5. LEASE DESIGNATION AND SERIAL NO.
LC - 029342-b

6. INDIAN, ALLOTTEE OR TRIBE NAME

7. UNIT AGREEMENT NAME

8. FARM OR LEASE NAME
Loco Hills 'B' Federal

9. WELL NO.
9

10. FIELD AND POOL, OR WILDCAT
Grayburg-Jackson-Queen-SA

11. SEC., T., R., M., OR BLK. AND SURVEY OR AREA
9 - 17S - 30E

12. COUNTY OR PARISH
Eddy

13. STATE
New Mexico

14. DISTANCE IN MILES AND DIRECTION FROM NEAREST TOWN OR POST OFFICE*
Approximately 2 miles Northeast of Loco Hills, New Mexico

15. DISTANCE FROM PROPOSED* LOCATION TO NEAREST PROPERTY OR LEASE LINE, FT. (Also to nearest drlg. unit line, if any)
1310'

16. NO. OF ACRES IN LEASE
240

17. NO. OF ACRES ASSIGNED TO THIS WELL
40

18. DISTANCE FROM PROPOSED LOCATION* TO NEAREST WELL, DRILLING COMPLETED, OR APPLIED FOR, ON THIS LEASE, FT.
900'

19. PROPOSED DEPTH
2945'

20. ROTARY OR CABLE TOOLS
Rotary

21. ELEVATIONS (Show whether DF, RT, GR, etc.)
3691' GL

22. APPROX. DATE WORK WILL START*
Dec. 1, 1984

23. PROPOSED CASING AND CEMENTING PROGRAM

SIZE OF HOLE	SIZE OF CASING	WEIGHT PER FOOT	SETTING DEPTH	QUANTITY OF CEMENT
12-1/4"	8-5/8"	24.0#	450'	300 sx - circulated
7-7/8"	5-1/2"	15.5#	2945'	700 sx - circulated

1. Rig up rotary tools.
2. Drill 12-1/4" hole to approx. 450'; set & circulate or readymix cement to surface on 8-5/8" casing. Install & test Series 900 Double Ram Hydraulic Blowout Preventor.
3. Drill 7-7/8" hole to T D (approx. 2945'); run Open Hole Logs.
4. Set & circulate cement on 5 1/2" casing from T D to surface.
5. Perforate, acidize and fracture treat.
6. Run 2-3/8" tubing, rods and bottomhole pump; install pumping equipment and place well on production.

Note: This is an unorthodox location.

IN ABOVE SPACE DESCRIBE PROPOSED PROGRAM: If proposal is to deepen or plug back, give data on present productive zone and proposed new productive zone. If proposal is to drill or deepen directionally, give pertinent data on subsurface locations and measured and true vertical depths. Give blowout preventer program, if any.

24. SIGNED Truman D. Jones TITLE Field Foreman DATE Nov. 12, 1984
(This space for Federal or State office use)

PERMIT NO. _____ APPROVAL DATE _____
APPROVED BY _____ TITLE _____ DATE 11-28-84

Subject to
Like Approval
by State

*See Instructions On Reverse Side

APPROVAL SUBJECT TO
GENERAL REQUIREMENTS AND
SPECIAL STIPULATIONS
ATTACHED

NEW MEXICO OIL CONSERVATION COM. JSION
WELL LOCATION AND ACREAGE DEDICATION PLAT

Form C-102
 Supersedes C-128
 Effective 1-1-65

All distances must be from the outer boundaries of the Section

Operator ANADARKO PRODUCTION COMPANY			Lease FEDERAL "B"		Well No. 9
Unit Letter "I"	Section 9	Township 17 South	Range 30 East	County Eddy	
Actual Footage Location of Well: 1460 feet from the South line and 1310 feet from the East line					
Ground Level Elev. 3691	Producing Formation Grayburg		Pool Grayburg-Jackson-Queen- G-San Andres SR		Dedicated Acreage: 40 Acres

1. Outline the acreage dedicated to the subject well by colored pencil or hachure marks on the plat below.
2. If more than one lease is dedicated to the well, outline each and identify the ownership thereof (both as to working interest and royalty).
3. If more than one lease of different ownership is dedicated to the well, have the interests of all owners been consolidated by communitization, unitization, force-pooling, etc?

☐ Yes ☐ No If answer is "yes," type of consolidation _____

If answer is "no," list the owners and tract descriptions which have actually been consolidated. (Use reverse side of this form if necessary.) _____

No allowable will be assigned to the well until all interests have been consolidated (by communitization, unitization, forced-pooling, or otherwise) or until a non-standard unit, eliminating such interests, has been approved by the Commission.

CERTIFICATION

I hereby certify that the information contained herein is true and complete to the best of my knowledge and belief.

Name
Jerry E. Buckles
Jerry E. Buckles

Position
Area Supervisor

Company
Anadarko Production Company

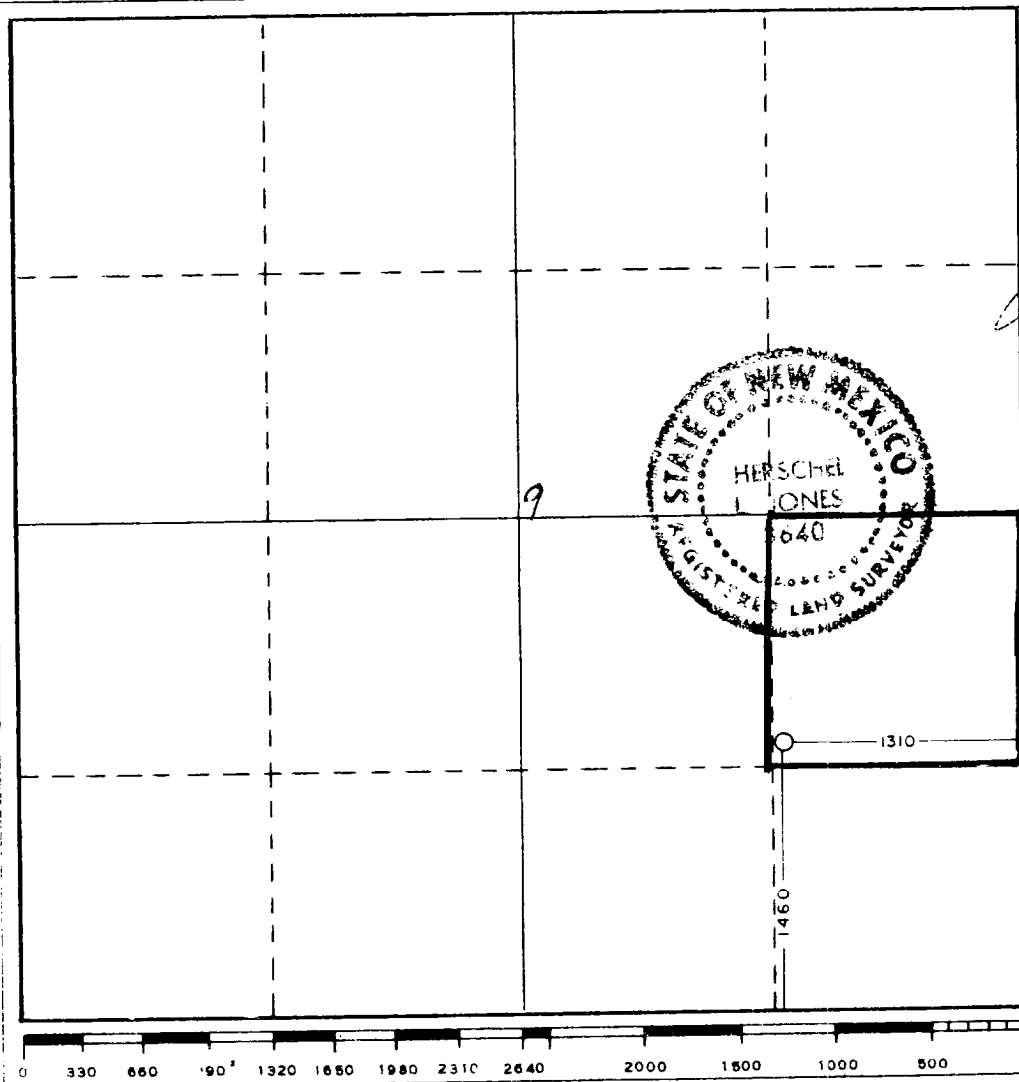
Date
November 6, 1984

I hereby certify that the well location shown on this plat was plotted from field notes of actual surveys made by me or under my supervision, and that the same is true and correct to the best of my knowledge and belief.

Date Surveyed
November 5, 1984

Registered Professional Engineer and/or Land Surveyor

Certificate No.
3840



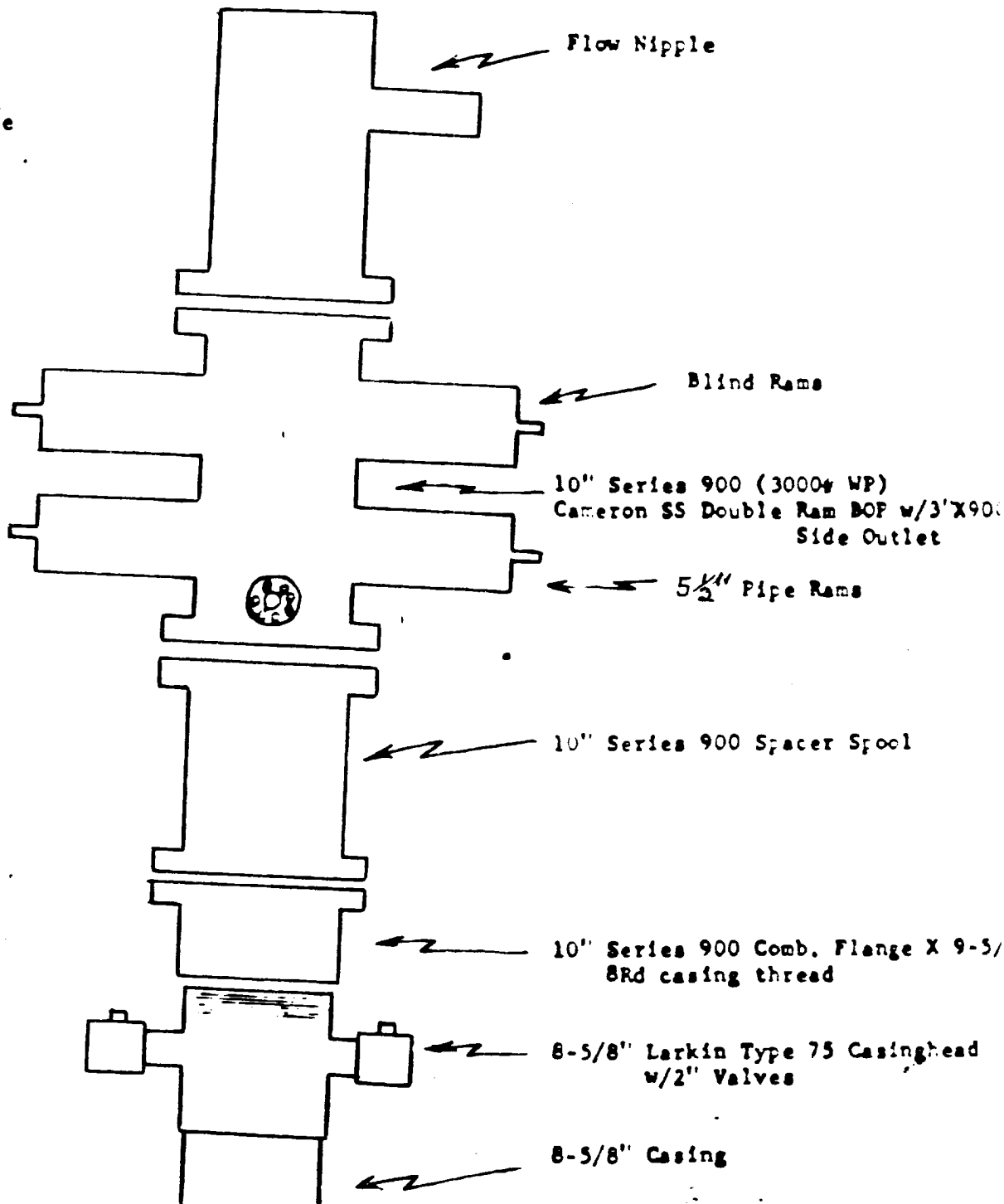
Anadarko

PRODUCTION COMPANY

P. O. Box 67 • Lordsburg, New Mexico 86256 • (505) 677-2411

A
Part-handle
Eastern
Company

Closing Unit
4 Stage Payne



B O P Schematic

DATA SHEET

This data sheet is provided in reference to the attached "Application for Permit to Drill: Anadarko's Loco Hills "B" Federal #9

1. Location: 1460' FSL & 1310' FEL Sec. 9, T17S, R30E, Eddy County, New Mexico
2. Elevation: 3691' GL
3. Geological Name of Surface Formation: Triassic Rock
4. Type of Drilling Tools to be utilized: Rotary Tools
5. Proposed Drilling Depth: 2945'
6. Tops of Important Geological Markers:

T. Salt - -	550'	7-Rivers - -	1640'
B. Salt - -	1100'	Queen - - -	2170'
Tansill - -	1150'	Grayburg - -	2570'
Yates - - -	1250'	San Andres -	2900'

7. Estimated Depth of Anticipated Water, Oil or Gas:

Oil: - - 2570'

8. Casing Program:

8-5/8" - 24.0# K-55 or J-55 - New
5-1/2" - 15.5# K-55 or J-55 - New

9. Setting Depth of Casing:

8-5/8" - 450' - approx. 300 sx cement
5-1/2" - 2945' - approx. 700 sx cement

10. Specifications for Pressure Control Equipment: (See attached Schematic)

This rig will have a Series 900 BOP with 5½" Blind Rams, kill line and choke manifold; Koomey Hydraulic controls & accumulator with remote controls. When nipping up, test BOP and Choke to 1000 psi. Operate BOP equipment once a day, or as directed by Company Representative.

11. Mud Program:

Spud and drill with fresh water native mud to a depth of approx. 450'; drill out from under surface casing with 10# brine to within 50' of TD while maintaining a Ph of 10. At this point paper & gel will be used to clean hole prior to running O. H. Logs.

12. Testing, Logging & Coring Program:

- a. Testing: No drill stem tests will be conducted.
- b. Coring: No coring is planned.
- c. Logging: Open Hole Logs will be run prior to running 5½" casing.

13. Potential Hazards:

None are expected. Above described BOP should take care of any blowout. Numerous wells have been drilled in this area without problems.

14. Anticipated Starting Date & Duration:

Plans are to begin drilling operations about Dec. 1, 1984; approx. 6 days will be required to drill the well and 2 weeks for completion.

15. Other Facets: None.

R 30 E

State "A" Merrill State "B" Haver State

Anadarko

Leonard "E" Fed

Evans "A" Fed

Federal "D"

"Parke"

Thompson

Newmont

Newmont

Anadarko

Anadarko

Leonard "E"

Thompson

SQUARE LAKE

Yates

Thompson

Thompson

Evans "A" Fed

U.S.

Leonard "E" Fed

Fed "D"

(Parke)

Fed "K"

Windfohr Oil

Gen Amer

New Location

NEW FLOW LINE

EXISTING POWER LINE

Anadarko

EXISTING TANK BATTERY

Gissler "B"

Yates

Proposed power line

NEW ROAD

Caliche

Tex Am

Tex Am

Tex Am

Tex Am

Gen Am

Shenandoah

Parke Corp

Shenandoah

Eliz "C"

Eliz "B"

Eliz "A"

Collier

McIntyre "N"

Shenandoah

Dexter-Fed

Parke "B"

McClough

Eliz St

State

Eliz "J"

Eliz St

Parke "B"

Parke "B"

Parke "C"

Sinclair

Parke Corp

Gen Amer

Sinclair

Shenandoah

Shenandoah

Shenandoah

Shenandoah

McIntyre "C"

Parke "B"

Parke "B"

Parke "B"

Parke "B"

Parke "B"

Parke "B"

Parke "B"

Parke "A"

Anadarko

Chambers

Grayburg

Jackson

Grayburg Jackson Unit

Gen Op Co - Opr

Dexter-Fed

LOCO HILLS

Exhibit #2

T. 17 S

Eddy

County

PLAT LAYOUT RIG

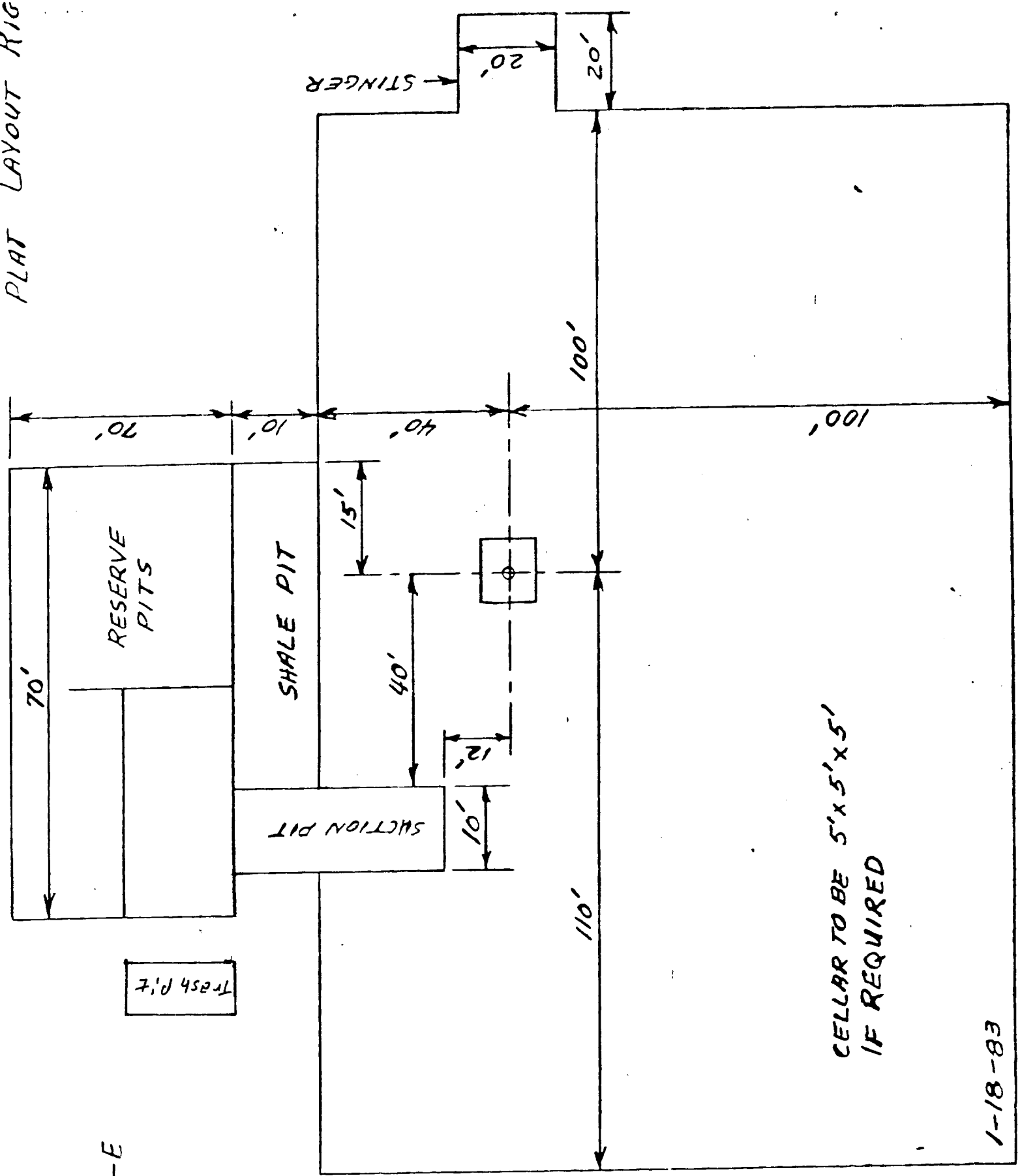


EXHIBIT #3