

NEW MEXICO OIL CONSERVATION COMMISSION
WELL LOCATION AND ACREAGE DEDICATION PLAT

Form C-102
Supersedes C-128
Effective 1-1-65

All distances must be from the outer boundaries of the Section.

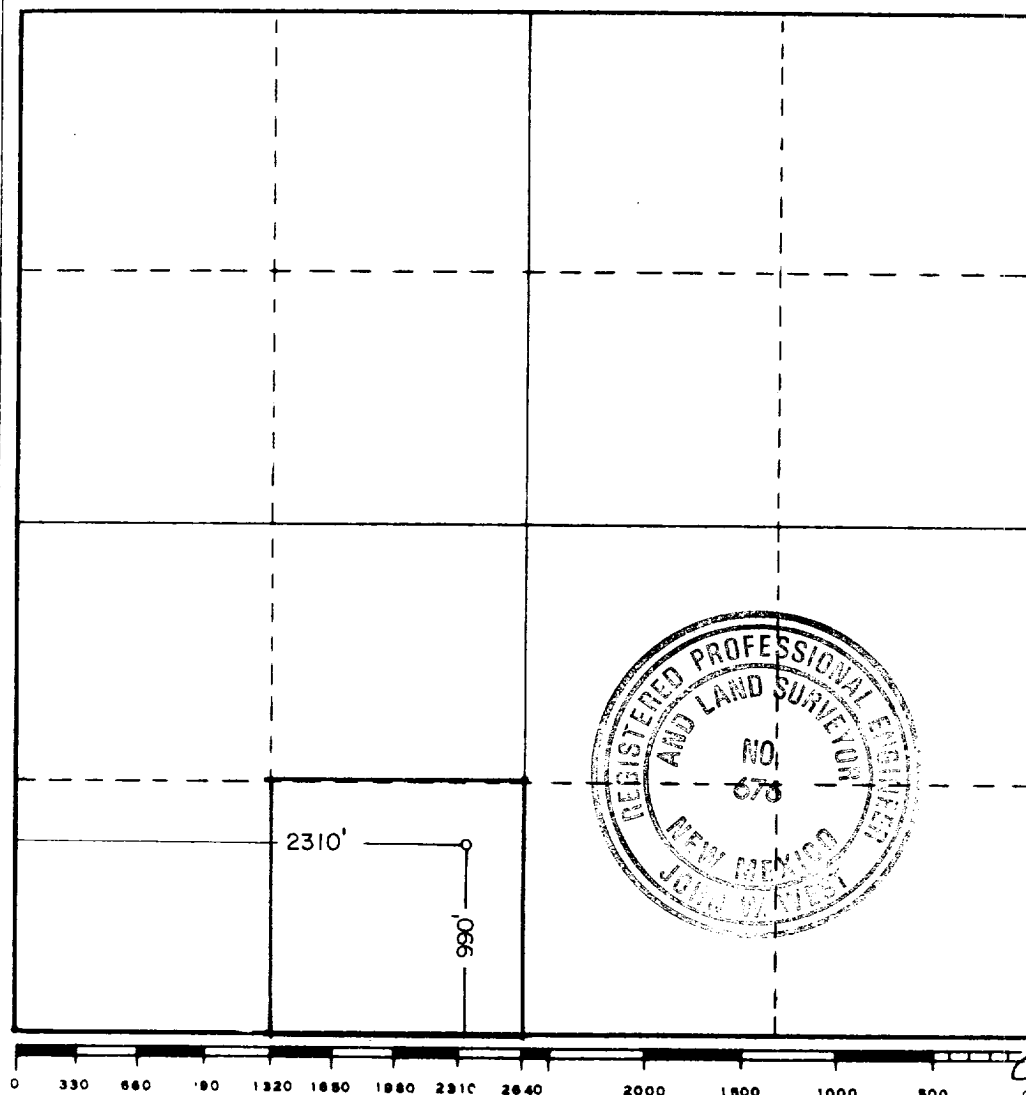
Operator Marbob Energy Corp.			Lease M Dodd "A"			Well No. 36		
Unit Letter N	Section 14	Township 17S	Range 29E	County Eddy				
Actual Footage Location of Well: 990 feet from the South line and 2310 feet from the West line								
Ground Level Elev. 3608.25	Producing Formation San Andres		Pool Grbg Jackson SR Qn Grbg SA			Dedicated Acreage: 40 Acres		

1. Outline the acreage dedicated to the subject well by colored pencil or hatchure marks on the plat below.
2. If more than one lease is dedicated to the well, outline each and identify the ownership thereof (both as to working interest and royalty).
3. If more than one lease of different ownership is dedicated to the well, have the interests of all owners been consolidated by communitization, unitization, force-pooling, etc?

☐ Yes ☐ No If answer is "yes," type of consolidation _____

If answer is "no," list the owners and tract descriptions which have actually been consolidated. (Use reverse side of this form if necessary.) _____

No allowable will be assigned to the well until all interests have been consolidated (by communitization, unitization, forced-pooling, or otherwise) or until a non-standard unit, eliminating such interests, has been approved by the Commission.



CERTIFICATION

I hereby certify that the information contained herein is true and complete to the best of my knowledge and belief.

Carolyn Purcella

Name

Carolyn Purcella

Position

Production Clerk

Company

Marbob Energy Corporation

Date

11/7/84

I hereby certify that the well location shown on this plat was plotted from field notes of actual surveys made by me or under my supervision, and that the same is true and correct to the best of my knowledge and belief.

Date Surveyed

Oct. 18, 1984

Registered Professional Engineer and/or Land Surveyor

John W. West

Certificate No. JOHN W. WEST,

676

RONALD J. EIDSON,

3239

REGAN OFFSHORE INTERNATIONAL, INC.

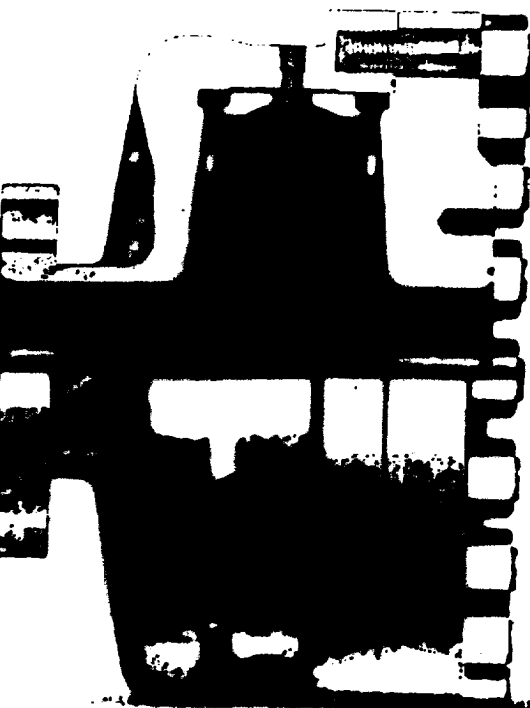
Torrance, CA

REGAN BLOWOUT PREVENTERS*Annular*

The Regan Torus Blowout Preventer is used primarily on production and workover rigs for well control up to 3000 PSI working pressure.

DESIGN FEATURES

- a. The Torus Preventer is designed for minimum weight to facilitate its use with production and workover rigs.
- b. The rubber packer will conform to any size hole in the well bore. Sealing ability is not affected by minor damage to the inner layer.
- c. The packer will seal in open hole at full working pressure.
- d. The dual packer design increases the reliability of the preventer since the outer rubber is never exposed to the well bore. Under ordinary service, the outer packer is rarely replaced.



TORUS BLOWOUT PREVENTER
PATENTED

SPECIFICATIONS

Nominal Size	Test Pressure (psi)	DIMENSIONS (in.)				End Flanges (I)	R/RX Ring Grooves	Side Outlet	1" Ball Valve
		Outside Diameter	Inside Bore	Overall Height	Weight (lb.)				
6	1000	6 1/2	3 1/2	13 1/4	140	200.5	15	2 1/2"	1"
8	2000	8 1/2	5 1/2	15 1/4	170	200.5	15	2 1/2"	1"
10	3000	10 1/2	7 1/2	17 1/4	205	200.5	15	2 1/2"	1"

SUP Exhibit "F"

REGAN BLOWOUT PREVENTER
Marbob Energy Corporation
Well #36 M. Dodd "A" Federal
SE4SW4 Sec. 14-17-29

SUPPLEMENTAL DRILLING DATA

MARBOB ENERGY CORPORATION
WELL #36 M. DODD "A" FEDERAL
SE1/4SW1/4 SEC. 14-17-29
EDDY COUNTY, NEW MEXICO
(DEVELOPMENT WELL)

1. SURFACE FORMATION: Quaternary.

2. ESTIMATED TOPS OF GEOLOGIC MARKERS:

Salt	360'	Queen	1815'
Ease Salt	780'	Grayburg	2140'
Yates	930'	San Andres	2510'
Seven Rivers	1145'	Glorietta	3900'

3. ANTICIPATED POROSITY ZONES:

Water	Above 180'
Oil	2350 - 3450'

4. CASING DESIGN:

SIZE	INTERVAL	WEIGHT	GRADE	JOINT	CONDITION
8 5/8"	0-350'	24.0#	K-55	STC	New
5 1/2"	0-3450'	15.5#	K-55	STC	New

5. SURFACE CONTROL EQUIPMENT: A double ram-type ~~or annular~~ BOP will be used. (See diagram attached as Exhibit "F")

6. CIRCULATING MEDIUM:

0 - 350' Fresh water mud with gel or lime as needed for viscosity control.

350' - 3450' Salt water mud, conditioned as necessary for control of viscosity and water loss or gain.

7. AUXILIARY EQUIPMENT: Drill string safety valve.

8. LOGGING PROGRAM: CNL-FDC W/GR Log will be run to TD.

9. ABNORMAL PRESSURES, TEMPERATURES OR GASES: A water flow may be encountered in the salt section.

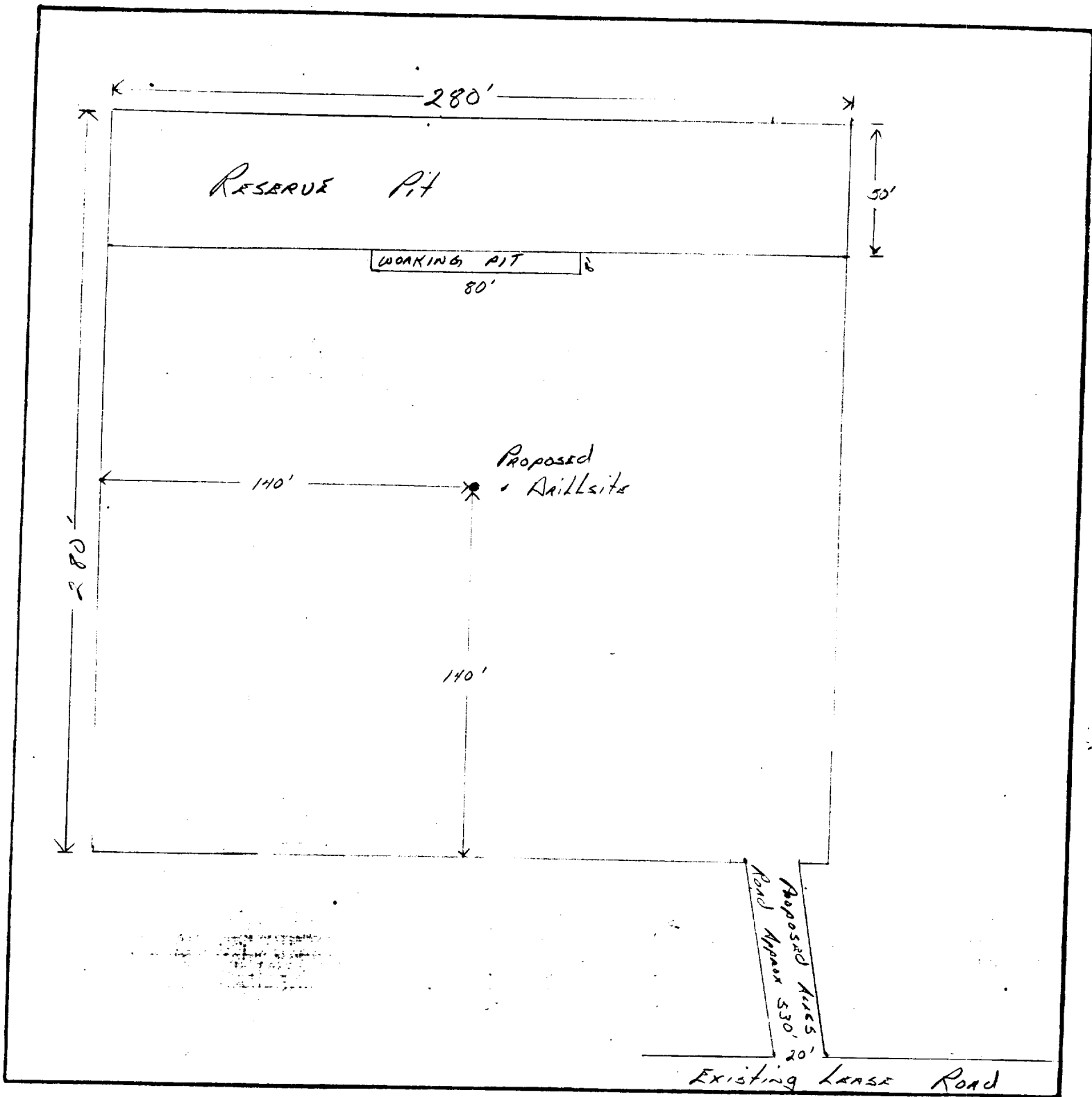
10. ANTICIPATED STARTING DATE: It is planned that operations will commence about November 15, 1984. Duration of drilling, testing and completion operations should be one to four weeks.

1

2

3

4



LEGEND

1cm = 20 ft.

SUP Exhibit "D"

SKETCH OF PROPOSED WELL PAD
Well #36 M. Dodd "A" Federal
SE $\frac{1}{4}$ SW $\frac{1}{4}$ SEC. 14-17-29

