

Form 100-2
(May 1983)
RECEIVED BY
DEC 18 1984
APPLICATION FOR PERMIT TO DRILL, DEEPEN, OR PLUG BACK
ARTESIA, OFFICE

NM OIL CONS. COMMISSION

Drawer DD

Artesia, NM 88210

SUBMIT IN TRI-STATE*

(Other instructions on reverse side)

Form approved.

Budget Bureau No. 42-R1425.

c/sf

30-215-25132

UNITED STATES
DEPARTMENT OF THE INTERIOR
GEOLOGICAL SURVEY

1a. TYPE OF WORK
DRILL ☒ DEEPEN ☐ PLUG BACK ☐

b. TYPE OF WELL

OIL WELL ☒

GAS WELL ☐

OTHER ☐

SINGLE ZONE ☐

MULTIPLE ZONE ☐

2. NAME OF OPERATOR

Siete Oil and Gas Corporation

3. ADDRESS OF OPERATOR

Post Office Box 2523, Roswell, New Mexico 88201

4. LOCATION OF WELL (Report location clearly and in accordance with any State requirements.)*

At surface

330 FWL 330 FSL

At proposed prod. zone

same

14. DISTANCE IN MILES AND DIRECTION FROM NEAREST TOWN OR POST OFFICE*

15 miles east of Artesia, New Mexico

15. DISTANCE FROM PROPOSED*

LOCATION TO NEAREST

PROPERTY OR LEASE LINE, FT.

(Also to nearest drlg. unit line, if any)

330'

16. NO. OF ACRES IN LEASE

320

18. DISTANCE FROM PROPOSED LOCATION*

TO NEAREST WELL, DRILLING, COMPLETED,

OR APPLIED FOR, ON THIS LEASE, FT.

1320'

19. PROPOSED DEPTH

3000'

17. NO. OF ACRES ASSIGNED

TO THIS WELL

40

20. ROTARY OR CABLE TOOLS

Rotary

21. ELEVATIONS (Show whether DF, RT, GR, etc.)

3608'

22. APPROX. DATE WORK WILL START*

December 21, 1984

23. PROPOSED CASING AND CEMENTING PROGRAM

SIZE OF HOLE	SIZE OF CASING	WEIGHT PER FOOT	SETTING DEPTH	QUANTITY OF CEMENT
12 1/4"	8 5/8"	24# J-55	400'	250 sxs. Class "C" CIRCULATE
7 7/8"	4 1/2"	10.5# J-55	T.D.	350 sxs. Class "C"

Selectively perforate and treat pay zone

Attachments:

Survey Plat (C-102)
Supplemental Drilling Data
Surface Use Plan

IN ABOVE SPACE DESCRIBE PROPOSED PROGRAM: If proposal is to deepen or plug back, give data on present productive zone and proposed new productive zone. If proposal is to drill or deepen directionally, give pertinent data on subsurface locations and measured and true vertical depths. Give blowout preventer program, if any.

24.

SIGNED

President

DATE December 3, 1984

(This space for Federal or State office use)

PERMIT NO.

APPROVAL DATE

APPROVED BY

TITLE

DATE

CONDITIONS OF APPROVAL, IF ANY:

12-17-84
APPROVAL SUBJECT TO
GENERAL REQUIREMENTS AND
SPECIAL STIPULATIONS
ATTACHED

OIL CONSERVATION DIVISION

STATE OF NEW MEXICO
ENERGY AND MINERALS DEPARTMENTP. O. BOX 2088
SANTA FE, NEW MEXICO 87501Form C-103
Revised 10-1-78

All distances must be from the outer boundaries of the Section.

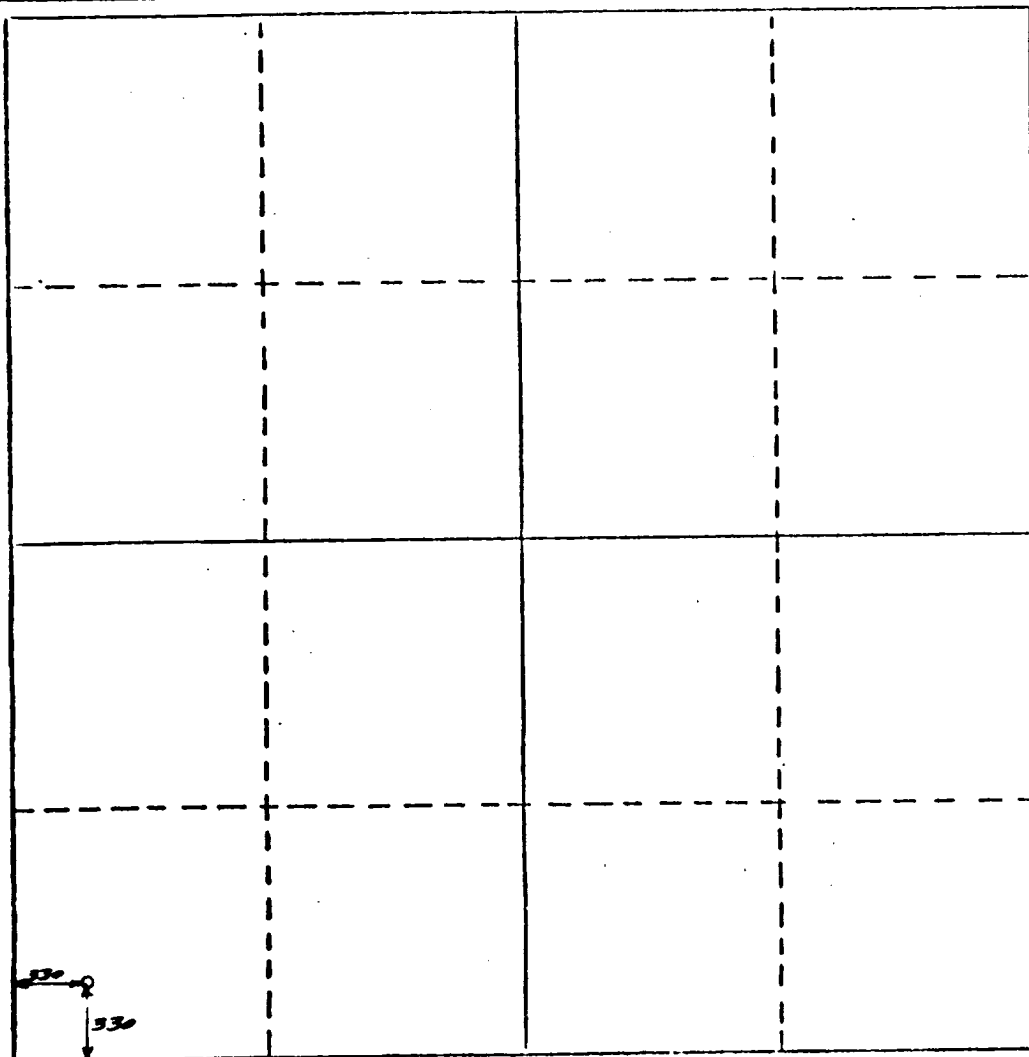
Operator Siete Oil & Gas		Lease Sackett- Federal		Well No. 1
Unit Letter M	Section 29	Township 17 South	Range 29 East	County Eddy
Actual Footage Location of Well: 330 feet from the South line and 330 feet from the West line				
Ground Level Elev. 3608	Producing Formation Grayburg-Jackson	Pool G-T, SP-D, E-SA	Dedicated Acreage: 40 Acres	

1. Outline the acreage dedicated to the subject well by colored pencil or hatchure marks on the plat below.
2. If more than one lease is dedicated to the well, outline each and identify the ownership thereof (both as to working interest and royalty).
3. If more than one lease of different ownership is dedicated to the well, have the interests of all owners been consolidated by communitization, unitization, force-pooling, etc?

☐ Yes ☐ No If answer is "yes," type of consolidation _____

If answer is "no," list the owners and tract descriptions which have actually been consolidated. (Use reverse side of this form if necessary.) _____

No allowable will be assigned to the well until all interests have been consolidated (by communitization, unitization, forced-pooling, or otherwise) or until a non-standard unit, eliminating such interests, has been approved by the Division.



CERTIFICATION

I hereby certify that the information contained herein is true and complete to the best of my knowledge and belief.

Name
Billy G. Underwood, Jr.
Position
President
Company
Siete oil and Gas Corporation
Date
December 3, 1984

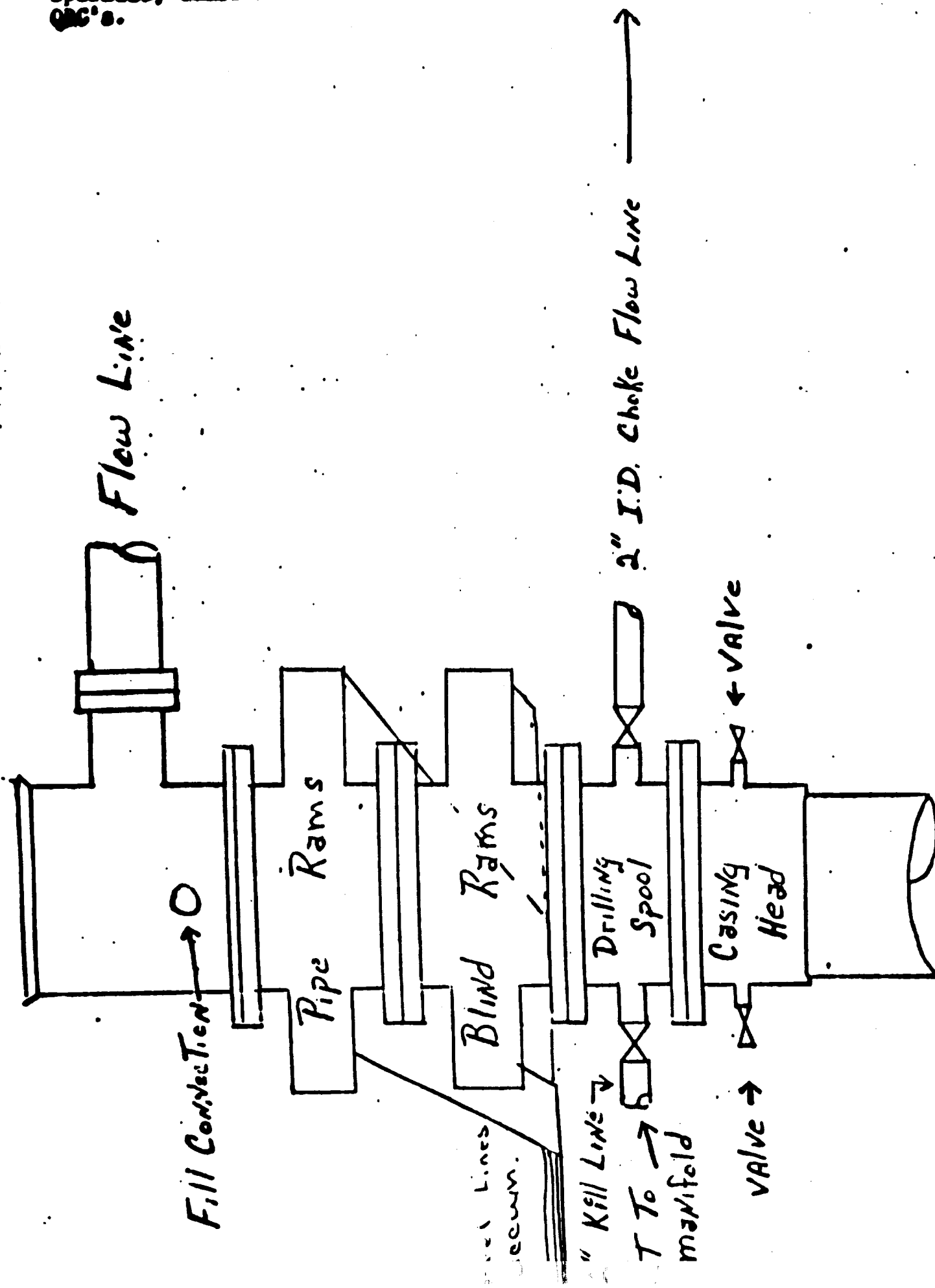
I hereby certify that the well location shown on this plat was plotted from field notes of actual surveys made by me or under my supervision, and that the same is true and correct to the best of my knowledge and belief.

December 1, 1984

Date Surveyed
P.R. Patton
Registered Professional Engineer
and/or Land Surveyor

8112
Certificate No.

BOP Hookups for large casing.
 Pipe & Blind Rams are hydraulic
 operated, Cameron 10 5000#
 QAC's.



1" Steel Lines
Pipe Rams &
Rams

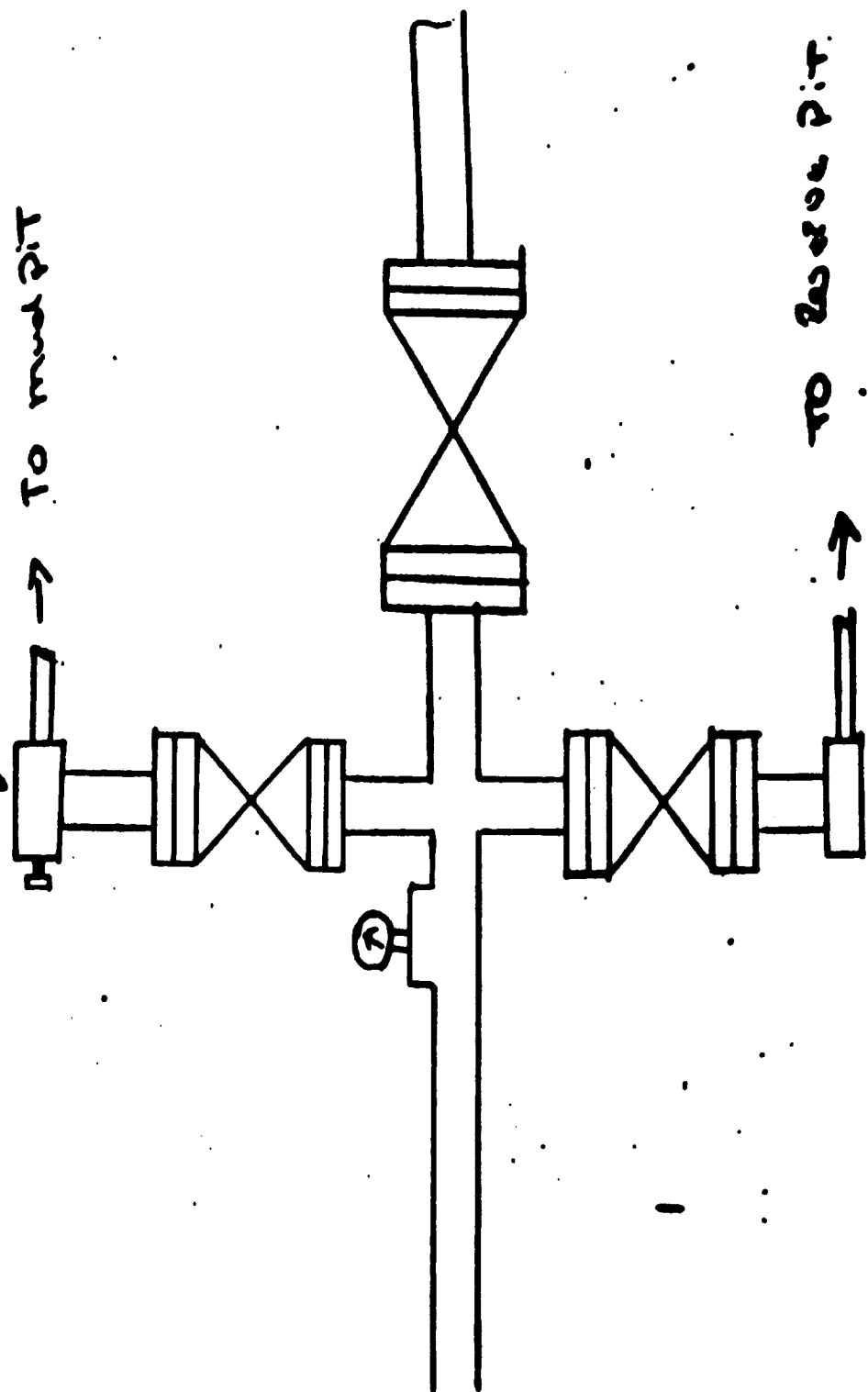
Accumulator

Oil operated,
80 gal. reservoir

2" choke → To mud pit

2" + 2" ↑

To 2nd mud pit



SUPPLEMENTAL DRILLING DATA
SIETE OIL AND GAS CORPORATION

RE: SIETE OIL AND GAS CORPORATION
 Sackett Federal #1
 330 FWL & 330 FSL
 Section 29: T-17-S, R-29-E
 Eddy County, New Mexico

In conjunction with Form 9-331C, Application to Drill the subject well Siete Oil and Gas Corporation submits the following ten items of pertinent information in accordance with U.S.G.S. requirements.

1. The geologic surface is Quaternary.
2. The estimated tops of geologic markers are as follows:

Yates	865'
Seven Rivers	1150'
Queen	1795'
Penrose	2055'
Grayburg	2215'
Premier	2520'
San Andres	2565'
Lovington	2695'

3. The estimated depths at which anticipated water, oil or gas are expected to be encountered.

Water:	Approximately 300'
Oil or Gas:	Approximately 1200' - 2055'

4. Proposed casing program: (See form 9-331C)

<u>Size</u>	<u>Interval</u>	<u>Weight</u>	<u>Grade</u>	<u>Joint</u>	<u>New or Used</u>
8 5/8"	0-400'	24#	J-55	S.T.&.C.	New
4 1/2"	0-3000'	10.5#	J-55	S.T.&.C.	New

5. Pressure Control Equipment: The blowout preventor will be two ram type preventer. A sketch is attached.
6. Mud Program: A copy of the mud program to be used is attached.
7. Auxiliary Equipment: Master valve on blowout preventer.
8. Testing, Logging and Coring Programs:

Logging: Compensated Neutron-Formation Density-Gamma Ray-Caliper
Dual Laterolog-Rxo

Rig 19

Drilling Site Plat

