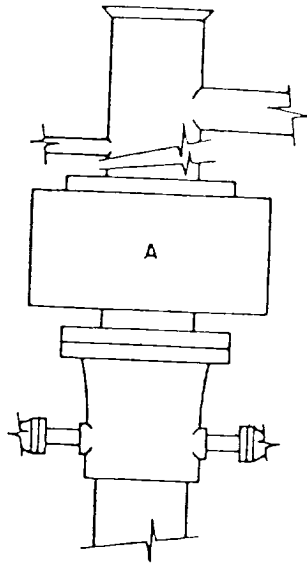


BLOWOUT PREVENTER ARRANGEMENT

Blazer Oil and Gas, Inc.  
Well #3 Hodges Federal  
NE $\frac{1}{4}$ NW $\frac{1}{4}$  Sec. 5-17S-29E



ARRANGEMENT A

SUPPLEMENTAL DRILLING DATA

BLAZER OIL AND GAS, INC.  
WELL #3 HODGES FEDERAL  
NE $\frac{1}{4}$ NW $\frac{1}{4}$  SEC. 5-17S-29E  
EDDY COUNTY, NEW MEXICO

1. SURFACE FORMATION: Recent.
2. ESTIMATED TOPS OF GEOLOGICAL MARKER:

Yates	850'	Grayburg	2050'
Seven Rivers	1120'	San Andres	2490'
Queen	1630'	Lovington Sand	2560'
3. ANTICIPATED POROSITY ZONES:

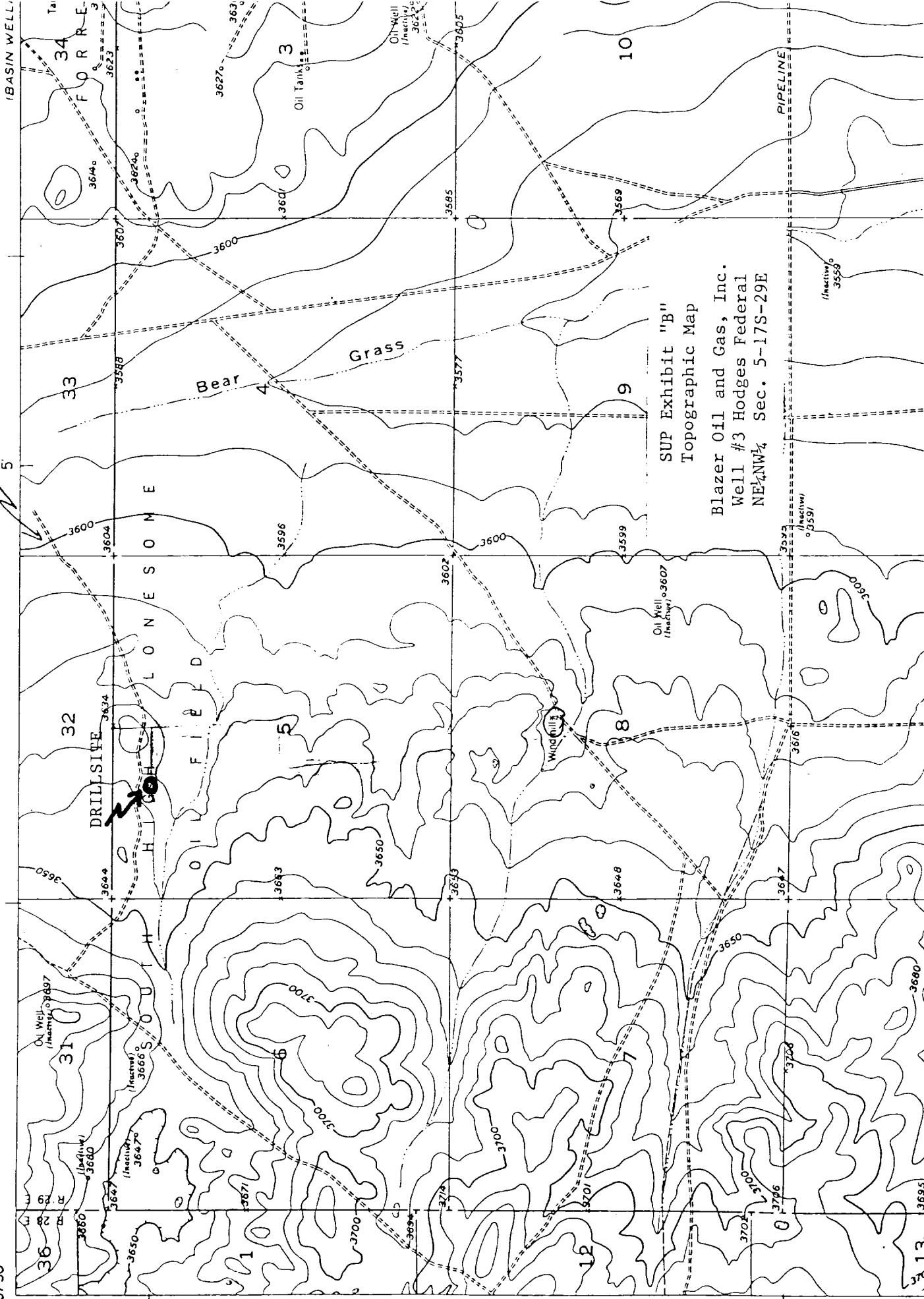
Water	- Above 200'
Oil	- 1800' - 3500'
4. CASING DESIGN:

<u>Size</u>	<u>Interval</u>	<u>Weight</u>	<u>Grade</u>	<u>Joint</u>
8 5/8"	0 - 250'	24.0#	K-55	STC
5 1/2"	0 - 3500'	14.0#	K-55	STC
5. SURFACE CONTROL EQUIPMENT: A double ran-type or annular BOP will be used.
6. CIRCULATING MEDIUM: Brine water conditioned as necessary for control of viscosity and water loss. Fresh water will be used for surface hole.
7. AUXILIARY EQUIPMENT: None considered necessary.
8. TESTING, LOGGING AND CORING PROGRAMS: No coring or DST's are planned. Logs will include a Gamma Ray Neutron log.
9. ABNORMAL PRESSURES, TEMPERATURES OR GASES: None anticipated.
10. ANTICIPATED STARTING DATE: It is planned that operations will commence about March 15, 1985. Drilling, completion, and testing should take two to four weeks.

UNITED STATES  
DEPARTMENT OF THE INTERIOR  
GEOLOGICAL SURVEY

104°07'30"  
2°52'30"

T. 16 S.  
T. 17 S.



SUP Exhibit "B"  
Topographic Map

Blazer Oil and Gas, Inc.  
Well #3 Hodges Federal  
NE 1/4 Sec. 5-17S-29E

SUP Exhibit "E"  
Proposed Access Road

Blazer Oil and Gas, Inc.  
Well #3 Hodges Federal  
NE $\frac{1}{4}$ NW $\frac{1}{4}$  Sec. 5-17S-29E  
Eddy County, New Mexico

