

OIL CONS. COMMISSION  
Artesia DD  
UNITED STATES  
DEPARTMENT OF THE INTERIOR  
GEOLOGICAL SURVEYSUBMIT TRIPLICATE  
(Other instructions on  
reverse side)30-015-25340  
Form approved.  
Budget Bureau No. 42-R1425.

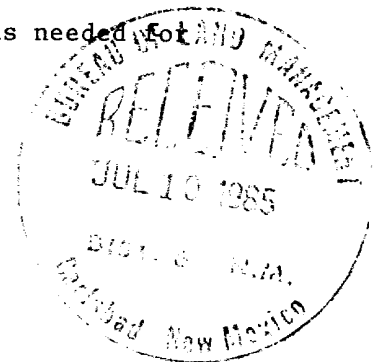
APPLICATION FOR PERMIT TO DRILL, DEEPEN, OR PLUG BACK			5. LEASE DESIGNATION AND SERIAL NO.	
1a. TYPE OF WORK DRILL <input checked="" type="checkbox"/> DEEPEN <input type="checkbox"/> PLUG BACK <input type="checkbox"/>			LC-028731(B)	
b. TYPE OF WELL OIL WELL <input checked="" type="checkbox"/> GAS WELL <input type="checkbox"/> OTHER <input type="checkbox"/>			6. IF INDIAN, ALLOTTEE OR TRIBE NAME	
2. NAME OF OPERATOR Marbob Energy Corporation			7. UNIT AGREEMENT NAME	
3. ADDRESS OF OPERATOR P.O. Drawer 217, Artesia, N.M. 88210			8. FARM OR LEASE NAME M. Dodd "B"	
4. LOCATION OF WELL (Report location clearly and in accordance with any State requirements.) At surface 1245 FNL 1245 FWL At proposed prod. zone Same			9. WELL NO. 51	
14. DISTANCE IN MILES AND DIRECTION FROM NEAREST TOWN OR POST OFFICE 20 air mile east of Artesia, N.M. 88210			10. FIELD AND POOL, OR WELDCAT Grbg Jackson SR Q G SA	
15. DISTANCE FROM PROPOSED LOCATION TO NEAREST PROPERTY OR LEASE LINE, FT. (Also to nearest drlg. unit line, if any) 1245'			11. SEC., T., R., M., OR BLK. AND SURVEY OR AREA Sec. 14-T17S-R29E	
16. DISTANCE FROM PROPOSED LOCATION TO NEAREST WELL, DRILLING, COMPLETED, OR APPLIED FOR, ON THIS LEASE, FT. 740'			12. COUNTY OR PARISH Eddy	
17. NO. OF ACRES IN LEASE 1480			13. STATE N.M.	
18. PROPOSED DEPTH 4500'			17. NO. OF ACRES ASSIGNED TO THIS WELL 40	
20. ROTARY OR CABLE TOOLS Rotary			22. APPROX. DATE WORK WILL START 7/15/85	
21. ELEVATIONS (Show whether DF, RT, GR, etc.) 3615.2' GR				

## PROPOSED CASING AND CEMENTING PROGRAM

SIZE OF HOLE	SIZE OF CASING	WEIGHT PER FOOT	SETTING DEPTH	QUANTITY OF CEMENT
12 1/4"	8 5/8"	24#	350'	Sufficient to circulate
7 7/8"	5 1/2"	15.50#	4500'	1500 sax, to base of salt

Pay zone will be selectively perforated and stimulated as needed for optimum production.

Attached are: 1. Location & acreage dedication plat  
2. Supplemental drilling data  
3. Surface use plan



IN ABOVE SPACE DESCRIBE PROPOSED PROGRAM: If proposal is to deepen or plug back, give data on present productive zone and proposed new productive zone. If proposal is to drill or deepen directionally, give pertinent data on subsurface locations and measured and true vertical depths. Give blowout preventer program, if any.

24.

SIGNED

TITLE

Production Clerk

DATE 7/9/85

(This space for Federal or State office use)

PERMIT NO.

APPROVAL DATE

APPROVED BY

CONDITIONS OF APPROVAL, IF ANY:

TITLE

CARLSBAD RESOURCE, N.M.

DATE

7-23-85

Subject to  
Like Approval  
by State

Unorthodox  
location

\*See Instructions On Reverse Side

APPROVAL SUBJECT TO  
GENERAL REQUIREMENTS AND  
SPECIAL STIPULATIONS  
ATTACHED

**N MEXICO OIL CONSERVATION COMMISS**  
**WELL LOCATION AND ACREAGE DEDICATION PLAT**

Form C-102  
 Supersedes C-128  
 Effective 1-1-65

All distances must be from the outer boundaries of the Section

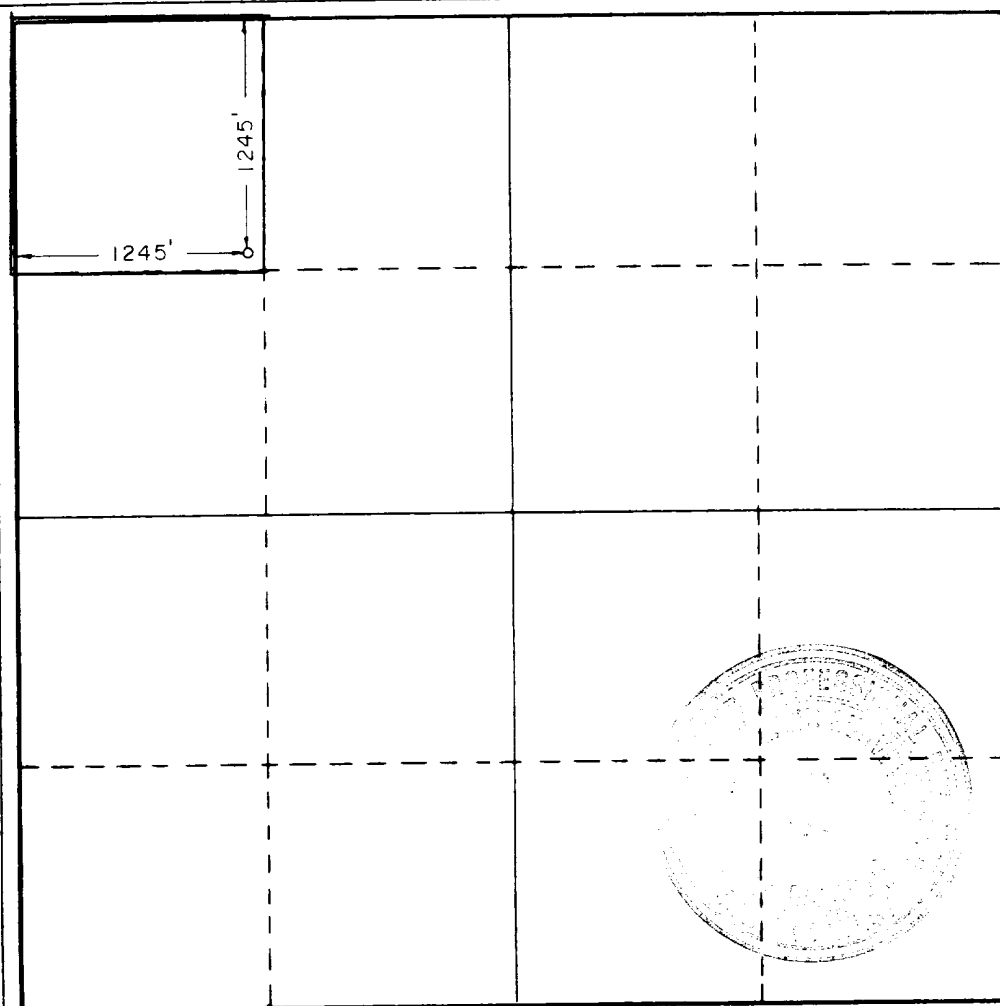
Operator <b>MARBOB ENERGY CORP.</b>			Lease <b>M DODD B</b>		Well No. <b>51</b>
Unit Letter <b>D</b>	Section <b>14</b>	Township <b>17S</b>	Range <b>29E</b>	County <b>EDDY</b>	
Actual Footage Location of Well: <b>1245</b> feet from the <b>NORTH</b> line and <b>1245</b> feet from the <b>WEST</b> line					
Ground Level Elev. <b>3615.2</b>	Producing Formation <b>San Andres</b>	Pool <b>Grbg Jackson SR On Grbg SA</b>		Dedicated Acreage: <b>40</b> Acres	

1. Outline the acreage dedicated to the subject well by colored pencil or hatchure marks on the plat below.
2. If more than one lease is dedicated to the well, outline each and identify the ownership thereof (both as to working interest and royalty).
3. If more than one lease of different ownership is dedicated to the well, have the interests of all owners been consolidated by communitization, unitization, force-pooling, etc?

☐ Yes    ☐ No    If answer is "yes," type of consolidation \_\_\_\_\_

If answer is "no," list the owners and tract descriptions which have actually been consolidated. (Use reverse side of this form if necessary.) \_\_\_\_\_

No allowable will be assigned to the well until all interests have been consolidated (by communitization, unitization, forced-pooling, or otherwise) or until a non-standard unit, eliminating such interests, has been approved by the Commission.



**CERTIFICATION**

I hereby certify that the information contained herein is true and complete to the best of my knowledge and belief.

*Carolyn Purcella*  
 Name

**Carolyn Purcella**  
 Position

Production Clerk

**Production Clerk**  
 Company

Marbob Energy Corporation

**Marbob Energy Corporation**  
 Date

7/8/85

I hereby certify that the well location shown on this plat was plotted from field notes of actual surveys made by me or under my supervision, and that the same is true and correct to the best of my knowledge and belief.

Date Surveyed

**5/16/85**

Registered Professional Engineer  
 and/or Land Surveyor

*John W. West*  
 Certificate No. **JOHN W. WEST, 676**

**RONALD J. EIDSON, 3239**

REGAN OFFSHORE INTERNATIONAL, INC.

Torrance,

ANNULAR

REGAN BLOWOUT PREVENTERS

The Regan Torus Blowout Preventer is used primarily on production and workover rigs for well control up to 3000 PSI working pressure

DESIGN FEATURES

- a. The Torus Preventer is designed for minimum height to facilitate its use with production and workover rigs.
- b. The rubber packer will conform to any size tool in the well bore. Sealing ability is not affected by minor damage to the inner bore.
- c. The packer will seal in open hole at full working pressure.
- d. The dual packer design increases the reliability of the preventer since the outer rubber is never exposed to the well bore. Under ordinary service, the outer packer is rarely replaced.



TORUS BLOWOUT PREVENTER  
PATENTED

SPECIFICATIONS

Nominal Size	Test Pressure (psi)	DIMENSIONS (in.)				End Flanges (I)	N/RX Ring Grooves	Side Outlet
		Outside Diameter	Inner Bore	Overall Height	Weight (lb.)			
6	1500	24	20	25	180	1/2" x 1/2"	15	2" I.D.
8	2500	36	30	35	300	3/4" x 3/4"	25	3" I.D.

SUP Exhibit E  
REGAN BLOWOUT PREVENTER  
Marbob Energy Corporation

SUPPLEMENTAL DRILLING DATA

MARBOB ENERGY CORPORATION  
WELL #51 M. DODD "B"  
NW1/4NW1/4 SEC. 14-17S-29E  
EDDY COUNTY, NEW MEXICO  
(DEVELOPMENT WELL)

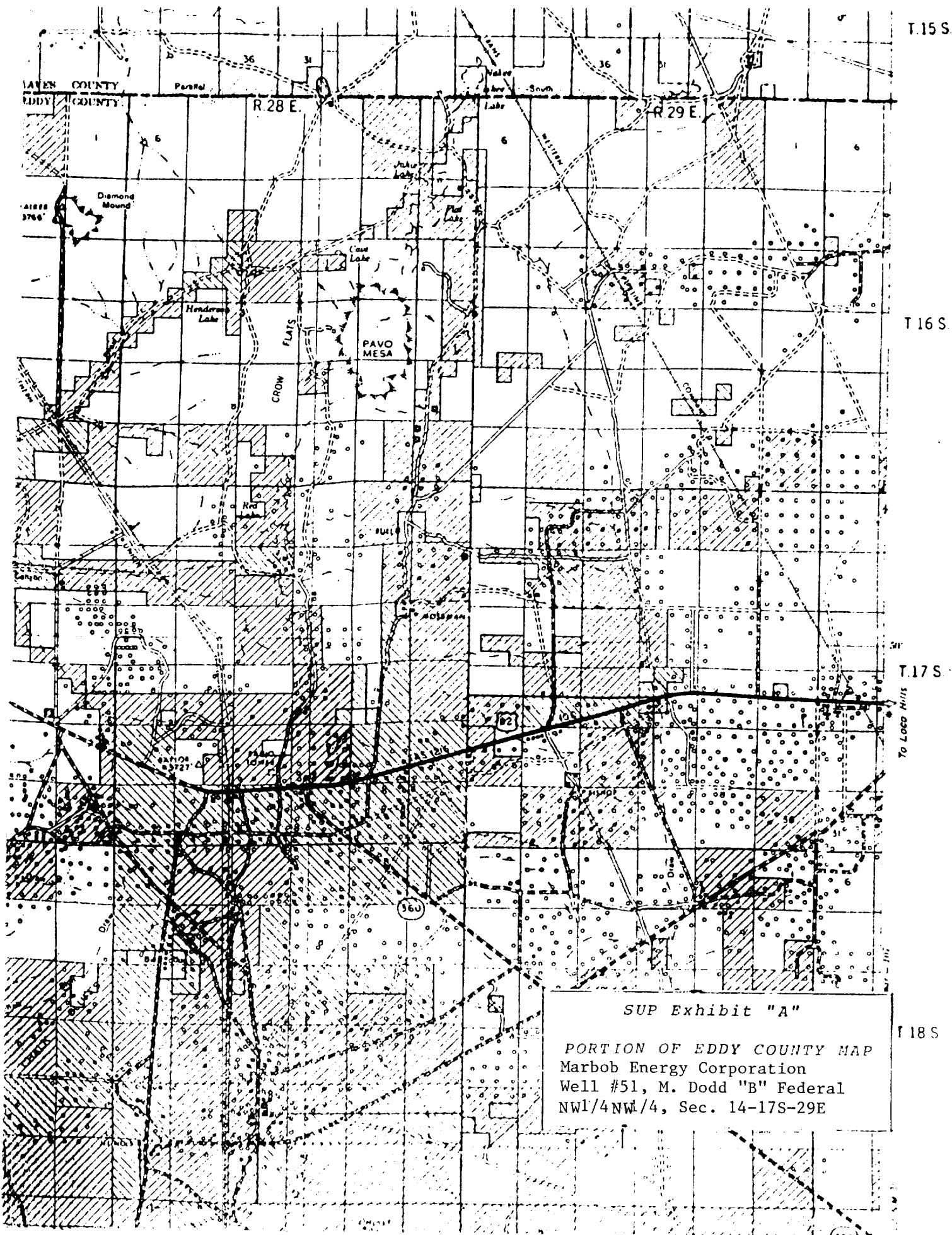
1. SURFACE FORMATION: Quaternary.
2. ESTIMATED TOPS OF GEOLOGIC MARKERS:

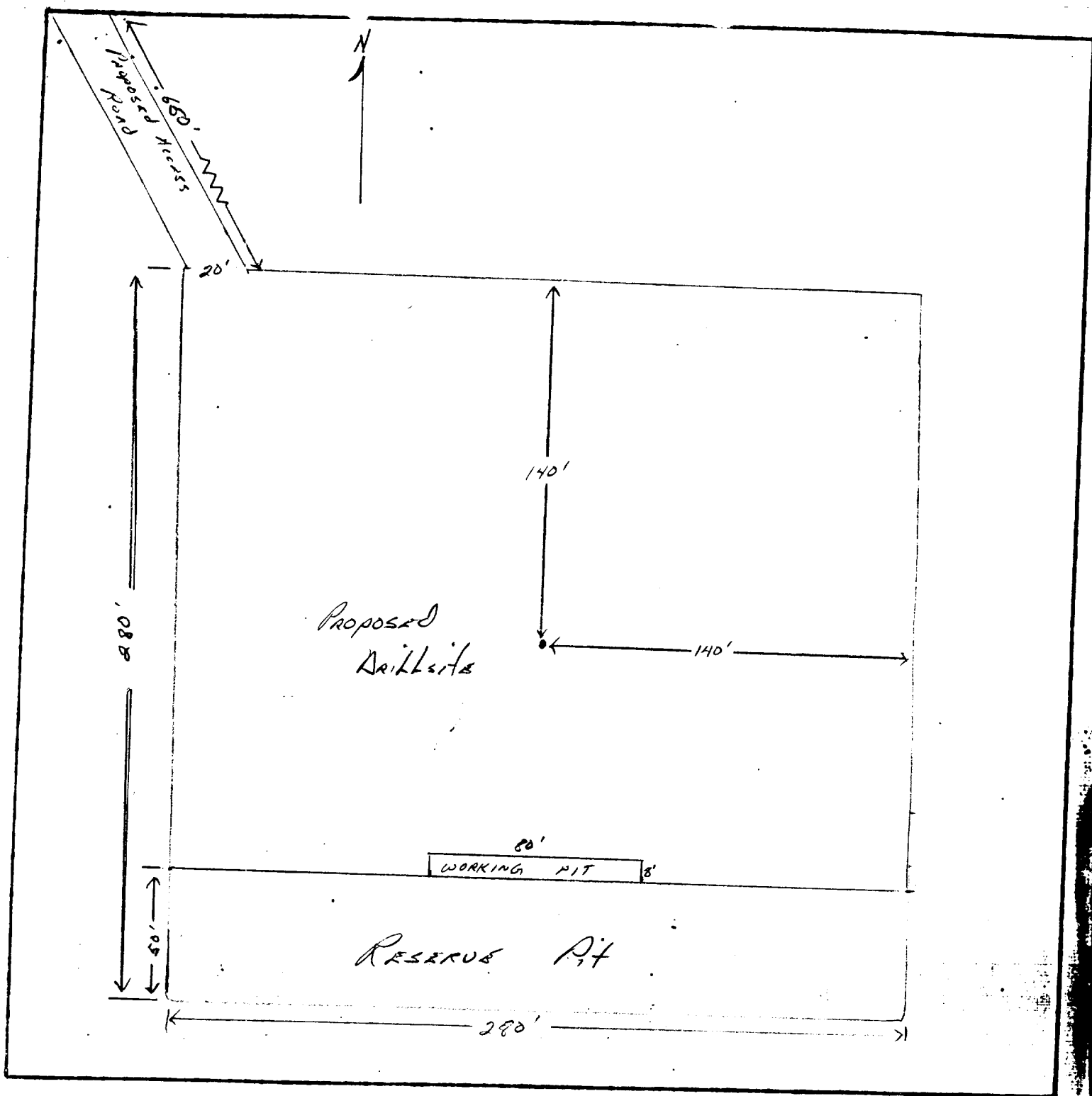
Salt	360'	Queen	1815'
Base Salt	780'	Grayburg	2140'
Yates	930'	San Andres	2510'
Seven Rivers	1145'	Glorietta	3900'
3. ANTICIPATED POROSITY ZONES:

Water	Above 180'
Oil	2350 - 4500'
4. CASING DESIGN:

<u>SIZE</u>	<u>INTERVAL</u>	<u>WEIGHT</u>	<u>GRADE</u>	<u>JOINT</u>	<u>CONDITION</u>
8 5/8"	0-350'	24.0#	K-55	STC	New
5 1/2"	0-4500'	15.5#	K-55	STC	New
5. SURFACE CONTROL EQUIPMENT: A double ram-type or annular BOP will be used. (See diagram attached as Exhibit "E")
6. CIRCULATING MEDIUM:

0 - 350'	Fresh water mud with gel or lime as needed for viscosity control.
350'- 4500'	Salt water mud, conditioned as necessary for control of viscosity and water loss or gain.
7. AUXILIARY EQUIPMENT: Drill string safety valve.
8. LOGGING PROGRAM: CNL-FDC W/GR Log will be run to TD.
9. ABNORMAL PRESSURES, TEMPERATURES OR GASES: A water flow may be encountered in the salt section.
10. ANTICIPATED STARTING DATE: It is planned that operations will commence about July 15, 1985. Duration of drilling, testing and completion operations should be one to four weeks.





**LEGEND**

1cm = 20 ft.

**SUP Exhibit "D"**

SKETCH OF PROPOSED WELL PAD  
 Marbob Energy Corporation  
 Well #51, M. Dodd "B" Fed.  
 NW 1/4NW1/4, Sec. 14-17S-29E

30-015-25340

**Oxford<sup>®</sup>**

⊗ ESSELTE

MADE IN U.S.A

NO. R753 1/3

•

•

•

•

12-21-85  
Dual spaced Neutronlog  
1400-5785

NSA-2085  
App'd. 7-17-85