

C/SF

Form 9-331-C
RECEIVED

NOV 7 1985

OIL
DRAWER
ARTESIA, NM

COMMISSION

UNITED STATES
DEPARTMENT OF THE INTERIOR
GEOLOGICAL SURVEYSUBMIT TRIPLICATE*
(Other instructions on
reverse side)Form approved.
Budget Bureau No. 42-R1425.30-015-25463
5. LEASE DESIGNATION AND SERIAL NO.

LC-028731(b)

6. IF INDIAN, ALLOTTEE OR TRIBE NAME

7. UNIT AGREEMENT NAME

8. FARM OR LEASE NAME

M. Dodd "B"

9. WELL NO.

55

10. FIELD AND POOL, OR WILDCAT

Grbg Jackson SR Q Gb SA

11. SEC., T., R., N., OR S.E.,
AND SURVEY OR AREA

Sec. 11- T17S-R29E

12. COUNTY OR PARISH

Eddy

13. STATE

NM

17. NO. OF ACRES ASSIGNED
TO THIS WELL

40

20. ROTARY OR CABLE TOOLS

Rotary

22. APPROX. DATE WORK WILL START*

11/11/85

APPLICATION FOR PERMIT TO DRILL, DEEPEN, OR PLUG BACK

DRILL ☒DEEPEN ☐PLUG BACK ☐

b. TYPE OF WELL

OIL
WELL ☒GAS
WELL ☐

OTHER

SINGLE
ZONE ☒MULTIPLE
ZONE ☐

2. NAME OF OPERATOR

Marbob Energy Corporation

3. ADDRESS OF OPERATOR

P.O. Drawer 217, Artesia, NM 88210

4. LOCATION OF WELL (Report location clearly and in accordance with any State requirements.)*

At surface

1295 FSL 1980 FWL

At proposed prod. zone

Same

14. DISTANCE IN MILES AND DIRECTION FROM NEAREST TOWN OR POST OFFICE*

20 air miles east of Artesia, NM 88210

15. DISTANCE FROM PROPOSED*

LOCATION TO NEAREST
PROPERTY OR LEASE LINE, FT.

(Also to nearest drig. unit line, if any)

1295'

18. DISTANCE FROM PROPOSED LOCATION*

TO NEAREST WELL, DRILLING, COMPLETED,
OR APPLIED FOR, ON THIS LEASE, FT.

990'

16. NO. OF ACRES IN LEASE

1480

19. PROPOSED DEPTH

4500'

21. ELEVATIONS (Show whether DF, RT, GR, etc.)

3630.2 GR

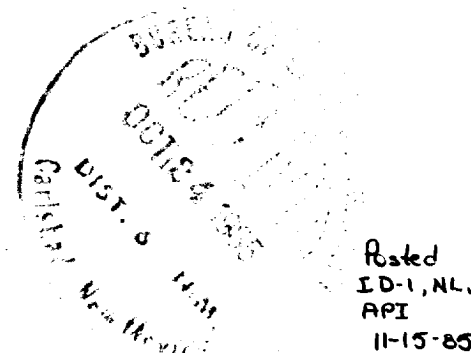
23.

PROPOSED CASING AND CEMENTING PROGRAM

SIZE OF HOLE	SIZE OF CASING	WEIGHT PER FOOT	SETTING DEPTH	QUANTITY OF CEMENT
12 1/4"	8 5/8"	24.0#	350'	Sufficient to circulate
7 7/8"	5 1/2"	15.5#	4500'	1500 sax, to base of salt

Pay zone will be selectively perforated and stimulated as needed for optimum production.

Attached are: 1. Location & acreage dedication plat
2. Supplemental drilling data
3. Surface use plan



IN ABOVE SPACE DESCRIBE PROPOSED PROGRAM: If proposal is to deepen or plug back, give data on present productive zone and proposed new productive zone. If proposal is to drill or deepen directionally, give pertinent data on subsurface locations and measured and true vertical depths. Give blowout preventer program, if any.

24.

SIGNED

DeFetter Morris

TITLE Production Clerk

DATE 10/23/85

(This space for Federal or State office use)

PERMIT NO.

APPROVAL DATE

APPROVED BY

TITLE

DATE

11-6-85

Subject to
Like Approval
by State

Unorthodox
location

*See Instructions On Reverse Side

NSL-2129

Appr. 11-1-85

APPROVAL SUBJECT TO
GENERAL REQUIREMENTS AND
SPECIAL STIPULATIONS
ATTACHED

N' MEXICO OIL CONSERVATION COMMISS'
WELL LOCATION AND ACREAGE DEDICATION PLAT

Form C-102
 Supersedes C-128
 Effective 1-1-65

All distances must be from the outer boundaries of the Section

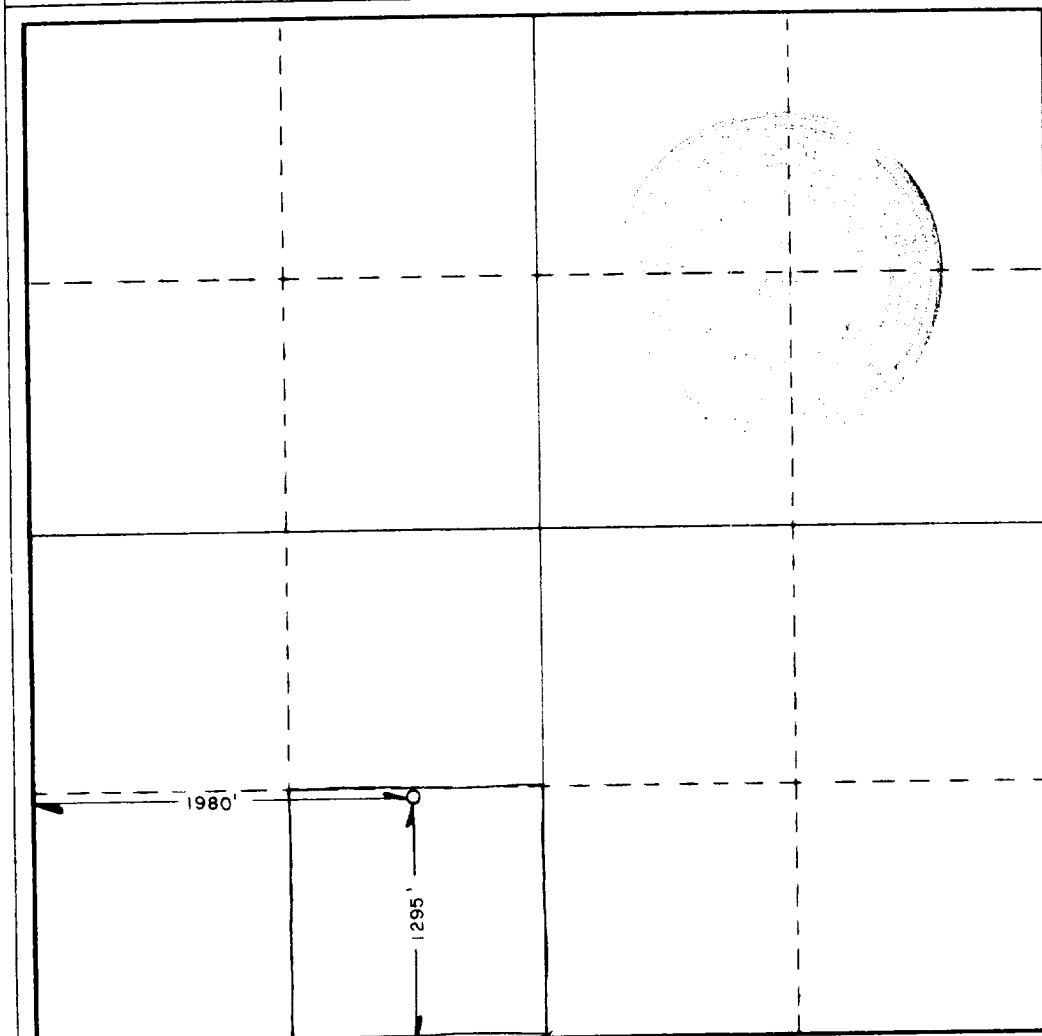
Operator MARBOB ENERGY CORP.		Lease M. DODD B		Well No. 55
Unit Letter N	Section 11	Township 17 SOUTH	Range 29 EAST	County EDDY
Actual Footage Location of Well: 1295 feet from the SOUTH line and 1980 feet from the WEST line				
Ground Level Elev. 3630.2	Producing Formation San Andres	Pool Grbg Jackson SR Q Gb SA	Dedicated Acreage: 40 Acres	

1. Outline the acreage dedicated to the subject well by colored pencil or hachure marks on the plat below.
2. If more than one lease is dedicated to the well, outline each and identify the ownership thereof (both as to working interest and royalty).
3. If more than one lease of different ownership is dedicated to the well, have the interests of all owners been consolidated by communitization, unitization, force-pooling, etc?

☐ Yes ☐ No If answer is "yes," type of consolidation _____

If answer is "no," list the owners and tract descriptions which have actually been consolidated. (Use reverse side of this form if necessary.) _____

No allowable will be assigned to the well until all interests have been consolidated (by communitization, unitization, forced-pooling, or otherwise) or until a non-standard unit, eliminating such interests, has been approved by the Commission.



CERTIFICATION

I hereby certify that the information contained herein is true and complete to the best of my knowledge and belief.

DeNette Morriss

Name

DeNette Morriss

Position

Production Clerk

Company

Marbob Energy Corporation

Date

10/23/85

I hereby certify that the well location shown on this plat was plotted from field notes of actual surveys made by me or under my supervision, and that the same is true and correct to the best of my knowledge and belief.

Date Surveyed

OCTOBER 17, 1985

Registered Professional Engineer
 and/or Land Surveyor

John W. West

Certificate No. **JOHN W. WEST,**

676

RONALD J. EIDSON,

3239

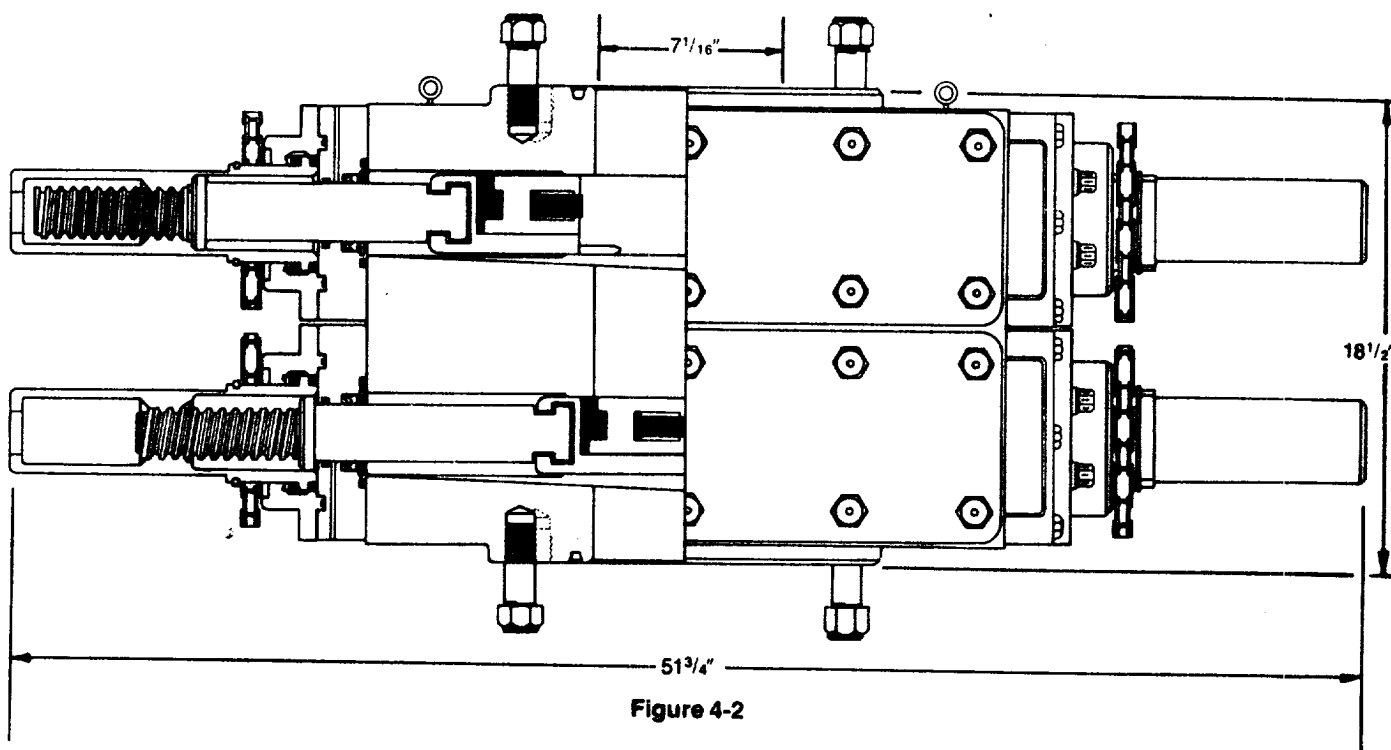


Figure 4-2

DIMENSIONS AND WEIGHTS

		Manual
Weight	Single (pounds)	1,272
	Double (pounds)	2,335
Overall height, less studs	Single (inches)	10
	Double (inches)	18 1/2
Overall length (inches)		51 3/4
Overall width, less handwheel (inches)		20 1/4
Opening through preventer (inches)		7 1/16
Working pressure (psi)		3,000
Test pressure (psi)		6,000
Handwheel diameter (inches)		20
Ring joint gasket API number		R-45

SUP Exhibit "F"
Sketch of Blowout Preventer

Marbob Energy Corporation
M. Dodd "B" Fed. Well #55
SE1/4SW1/4 Sec. 11-17S-29E

SUPPLEMENTAL DRILLING DATA

MARBOB ENERGY CORPORATION
WELL #55 M. DODD "B" FEDERAL
SE1/4SW1/4 SEC. 11-17S-29E
EDDY COUNTY, NEW MEXICO
(DEVELOPMENT WELL)

1. SURFACE FORMATION: Quaternary.

2. ESTIMATED TOPS OF GEOLOGIC MARKERS:

Salt	360'	Queen	1815'
Base Salt	780'	Grayburg	2140'
Yates	930'	San Andres	2510'
Seven Rivers	1145'	Glorietta	3900'

3. ANTICIPATED POROSITY ZONES:

Water	Above 180'
Oil	2350 - 4500'

4. CASING DESIGN:

SIZE	INTERVAL	WEIGHT	GRADE	JOINT	CONDITION
8 5/8"	0-350'	24.0#	K-55	STC	New
5 1/2"	0-4500'	15.5#	K-55	STC	New

5. SURFACE CONTROL EQUIPMENT: A double ram-type BOP will be used. (See diagram attached as Exhibit "E")

6. CIRCULATING MEDIUM:

0 - 350' Fresh water mud with gel or lime as needed for viscosity control.

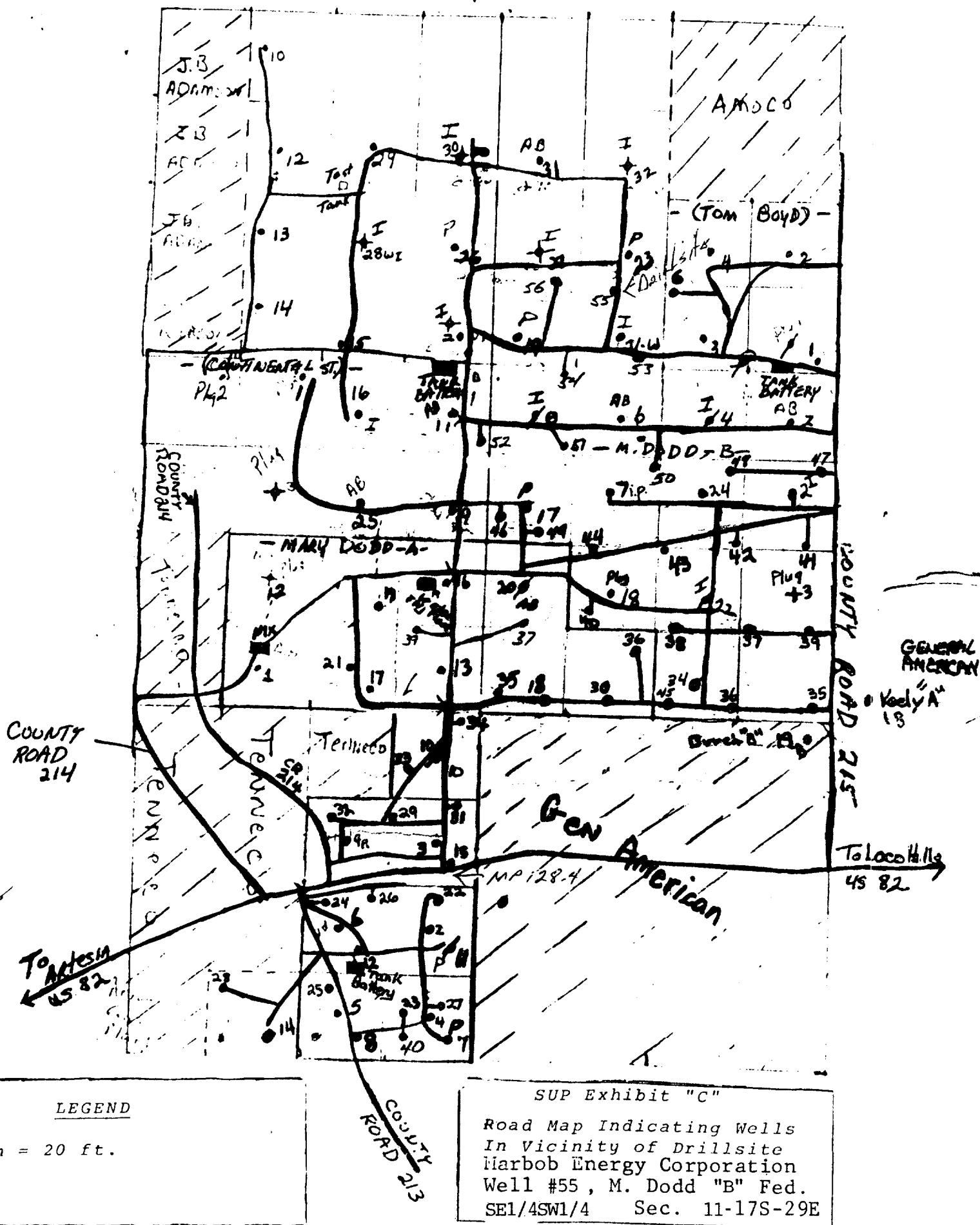
350'-4500' Salt water mud, conditioned as necessary for control of viscosity and water loss or gain.

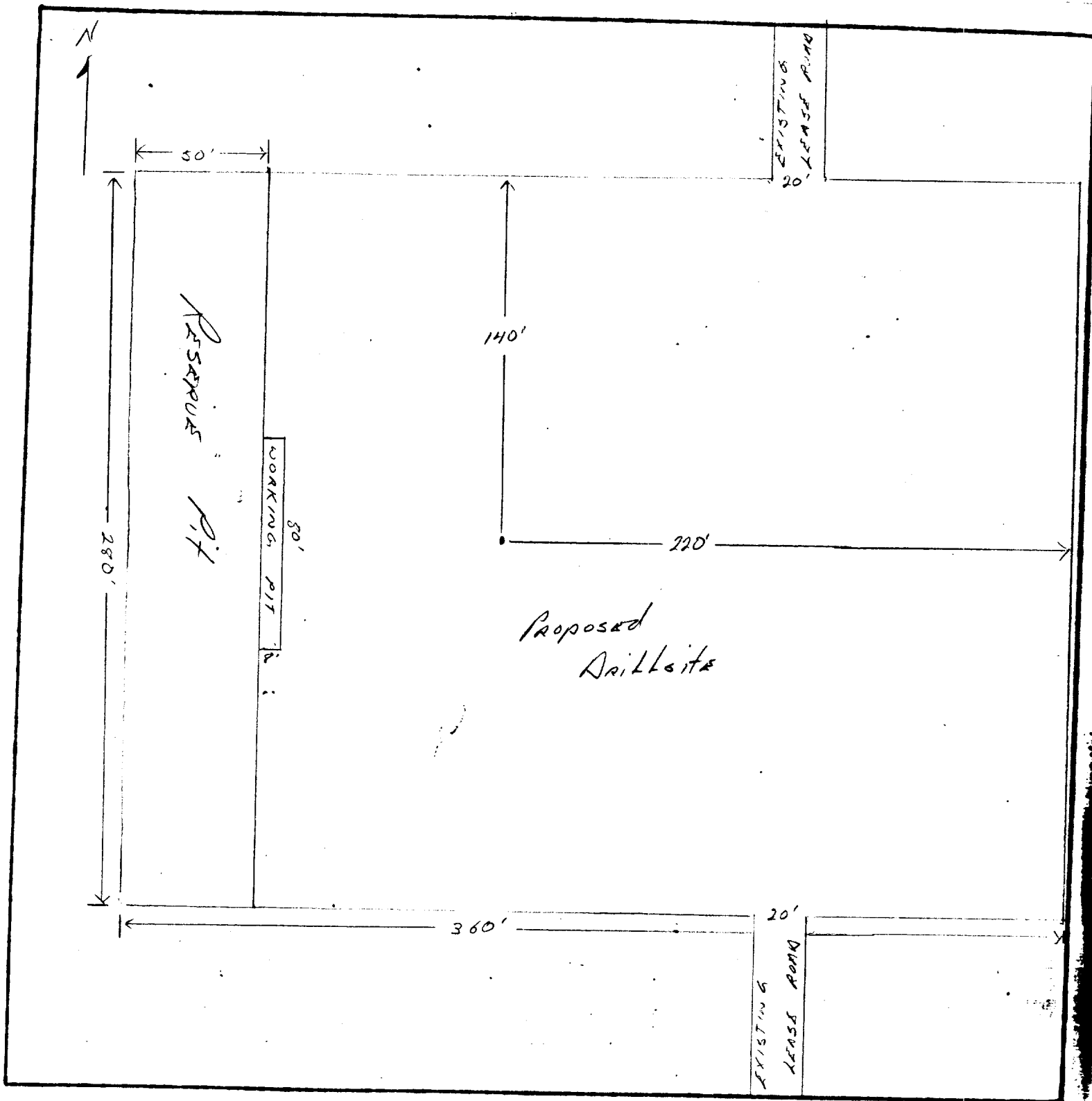
7. AUXILIARY EQUIPMENT: Drill string safety valve.

8. LOGGING PROGRAM: CNL-FDC W/GR Log will be run to TD.

9. ABNORMAL PRESSURES, TEMPERATURES OR GASES: A water flow may be encountered in the salt section.

10. ANTICIPATED STARTING DATE: It is planned that operations will commence about November 11, 1985. Duration of drilling, testing and completion operations should be one to four weeks.





LEGEND

1cm = 20 ft.

SUP Exhibit "D"

SKETCH OF PROPOSED WELL PAD

Marbob Energy Corporation
M. Dodd "B" Fed. Well #55
SE1/4SW1/4 Sec. 11-17S-29E