

UNITED STATES
DEPARTMENT OF THE INTERIOR
GEOLOGICAL SURVEY

SUBMIT IN TR DATE
(Other instructions on reverse side)
05210

30-015-25502
Form approved.
Budget Bureau No. 42-R1425.

APPLICATION FOR PERMIT TO DRILL, DEEPEN, OR PLUG BACK

1a. TYPE OF WORK

DRILL ☒

DEEPEN ☐

PLUG BACK ☐

b. TYPE OF WELL

OIL WELL ☒

GAS WELL ☐

OTHER

SINGLE ZONE ☒

MULTIPLE ZONE ☐

2. NAME OF OPERATOR

Siete Oil and Gas Corporation ✓

3. ADDRESS OF OPERATOR

Post Office Box 2523, Roswell, New Mexico 88201

4. LOCATION OF WELL (Report location clearly and in accordance with any State requirements)

At surface

660' FSL & 1650' FWL, SE/4 SW/4, Unit Letter N O.C.D. U.N.

At proposed prod. zone

same

14. DISTANCE IN MILES AND DIRECTION FROM NEAREST TOWN OR POST OFFICE*

7 miles Southwest of Loco Hills, New Mexico

15. DISTANCE FROM PROPOSED*

LOCATION TO NEAREST

PROPERTY OR LEASE LINE, FT.

(Also to nearest drig. unit line, if any)

330'

18. DISTANCE FROM PROPOSED LOCATION*

TO NEAREST WELL, DRILLING, COMPLETED,

OR APPLIED FOR, ON THIS LEASE, FT.

1320'

16. NO. OF ACRES IN LEASE

320

17. NO. OF ACRES ASSIGNED

TO THIS WELL

40

19. PROPOSED DEPTH

3500'

20. ROTARY OR CABLE TOOLS

Rotary

21. ELEVATIONS (Show whether DF, RT, GR, etc.)

3598'GR

22. APPROX. DATE WORK WILL START*

December 09, 1985

PROPOSED CASING AND CEMENTING PROGRAM

SIZE OF HOLE	SIZE OF CASING	WEIGHT PER FOOT	SETTING DEPTH	QUANTITY OF CEMENT
12 1/4"	8 5/8"	24.0#	400'	250 sxs (circulated)
7 7/8"	4 1/2"	10.5#	T.D.	350 sxs (sufficient to isolate all oil, gas and water zones.)

Selectively perforate and treat pay zone

ATTACHMENTS:

Survey Plat (C-102)

Supplemental Drilling Data

Surface Use Plan

IN ABOVE SPACE DESCRIBE PROPOSED PROGRAM: If proposal is to deepen or plug back, give data on present productive zone and proposed new productive zone. If proposal is to drill or deepen directionally, give pertinent data on subsurface locations and measured and true vertical depths. Give blowout preventer program, if any.

24.

SIGNED

TITLE

President

DATE

12/3/85

(This space for Federal or State office use)

PERMIT NO.

APPROVAL DATE

APPROVED BY

TITLE

DATE

12-4-85

CONDITIONS OF APPROVAL, IF ANY:

APPROVAL SUBJECT TO
GENERAL REQUIREMENTS AND
SPECIAL STIPULATIONS
ATTACHED

NEW MEXICO OIL CONSERVATION COMMISSION
WELL LOCATION AND ACREAGE DEDICATION PLAT

Form C-102
 Supersedes C-128
 Effective 1-1-65

All distances must be from the outer boundaries of the Section

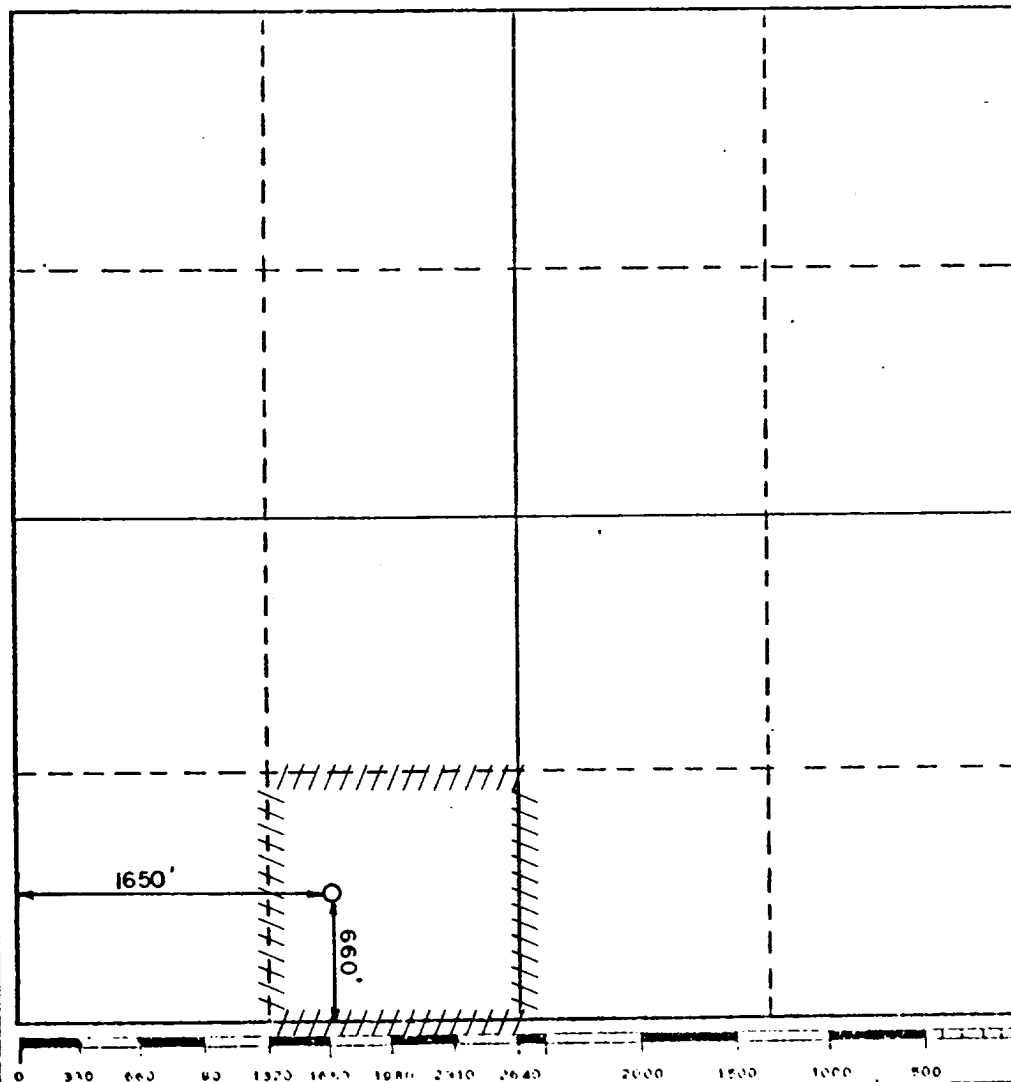
Operator Siete Oil & Gas Corporation		Lease Sackett Federal		Well No. 2
Unit Letter N	Section 29	Township 17 South	Range 29 East	County Eddy
Actual Footage Location of Well: 660 feet from the South line and 1650 feet from the West				
Ground Level Elev. 3598	Underlying Formation Grayburg	Foot Grayburg Jackson	Dedicated Acreage 40	

1. Outline the acreage dedicated to the subject well by colored pencil or hatchure marks on the plat below.
2. If more than one lease is dedicated to the well, outline each and identify the ownership thereof (both as to working interest and royalty).
3. If more than one lease of different ownership is dedicated to the well, have the interests of all owners been consolidated by communitization, unitization, force-pooling, etc?

☐ Yes ☐ No If answer is "yes," type of consolidation _____

If answer is "no," list the owners and tract descriptions which have actually been consolidated. (Use reverse side of this form if necessary.) _____

No allowable will be assigned to the well until all interests have been consolidated (by communitization, unitization, forced-pooling, or otherwise) or until a non-standard unit, eliminating such interests, has been approved by the Commission.



CERTIFICATION

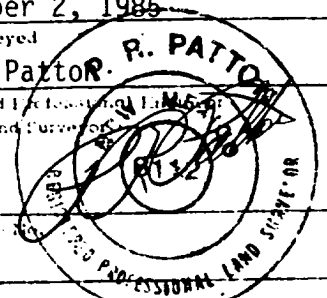
I hereby certify that the information contained herein is true and complete to the best of my knowledge and belief.

Name
Billy G. Underwood, Jr.
 Position
President
 Company
Siete Oil and Gas Corporation
 Date
December 3, 1985

I hereby certify that the well location shown on this plat was plotted from field notes of actual surveys made by me or under my supervision, and that the same is true and correct to the best of my knowledge and belief.

December 2, 1985

Date Surveyed
P. R. Patton
 Registered Professional Land Surveyor
 and/or Land Surveyor
8112
 Certificate No. **8112**



SUPPLEMENTAL DRILLING DATA
SIETE OIL AND GAS CORPORATION
Sackett Federal #2
1650' FWL & 660' FSL
Section 29: T17S, R29E
Eddy County, New Mexico
Lease Number - NM 14847

The following items supplement "Onshore Oil and Gas Order No. 1:

1. The geologic surface is quaternary.
2. The estimated geological marker tops:

Yates	877'	Seven Rivers	1014'
Queen	1840'	Penrose	2100'
Grayburg	2260'	Premier	2565'
San Andres	2620'	Lovington	2750'

3. Estimated depths to water, oil or gas:

Water: 300'

Oil or Gas: 1200' - 2800'

4. Proposed casing program:

<u>Size</u>	<u>Interval</u>	<u>Weight</u>	<u>Grade</u>	<u>Joint</u>	<u>New or Used</u>
8 5/8"	0 - 400'	24#	J-55	S.T.&C.	New
4 1/2"	0 - 3500'	10.5#	J-55	S.T.&C.	New

5. Pressure Control Equipment: The blowout preventer will be a double ram type preventer. A sketch is attached.

6. Mud Program:

0 - 400': Native mud

400' - 3500': Native fluid adding caustic soda for pH@8+. Sweep hole with paper for fill. For better samples add salt gel as needed to increase viscosity for sample mud. Mud up to 36 viscosity by total depth for open hole logs.

7. Auxiliary Equipment: A kelly cock will be installed on the rig floor while drilling operations are in progress.

8. Testing, Logging and Coring Programs: Possible drillstem tests and/or coring is not planned.

Logging: Compensated Neutron - Formation Density - Gamma Ray - Caliper
Dual Laterolog - RXO

9. No abnormal pressures or temperature zones are anticipated.

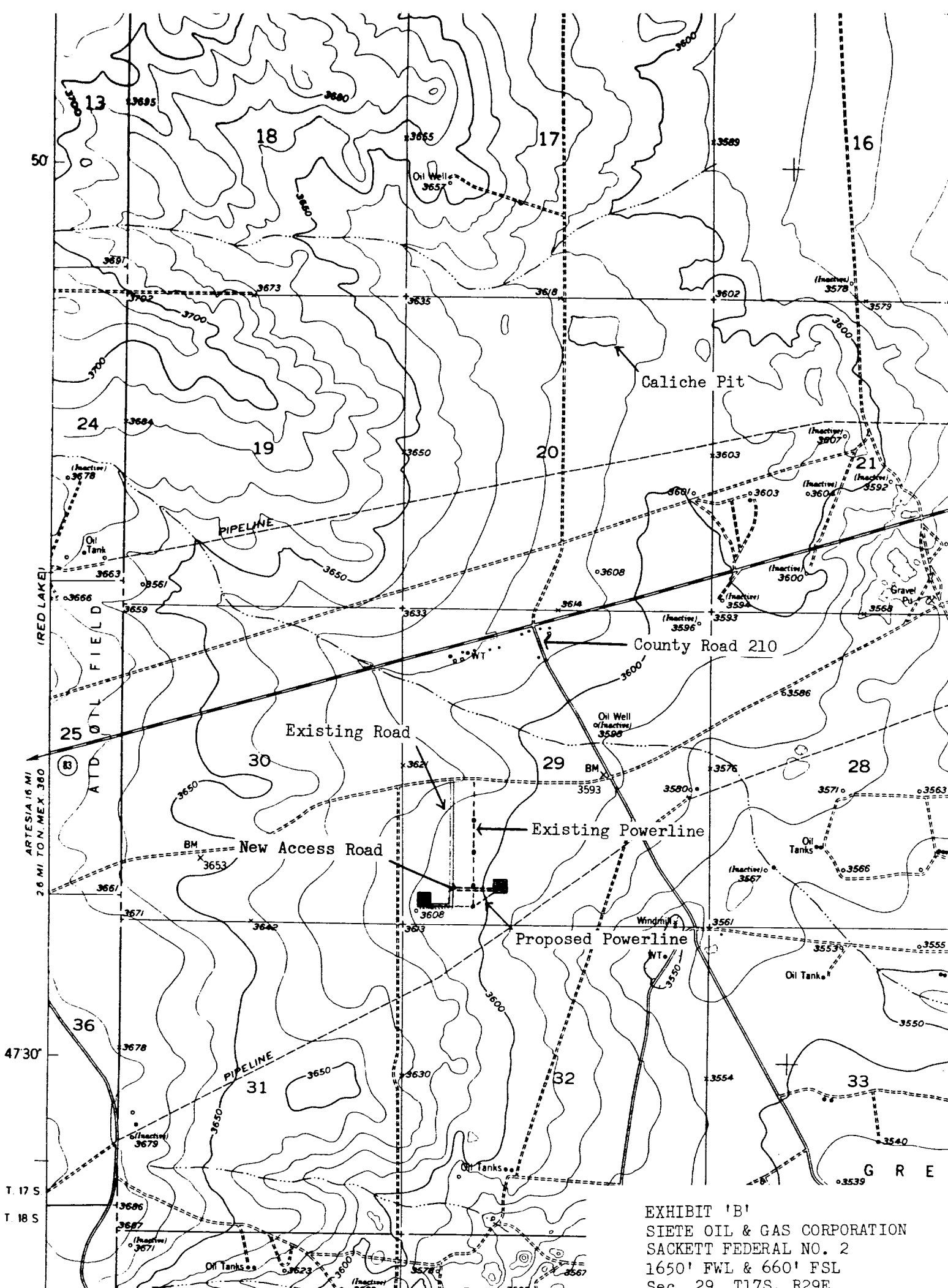
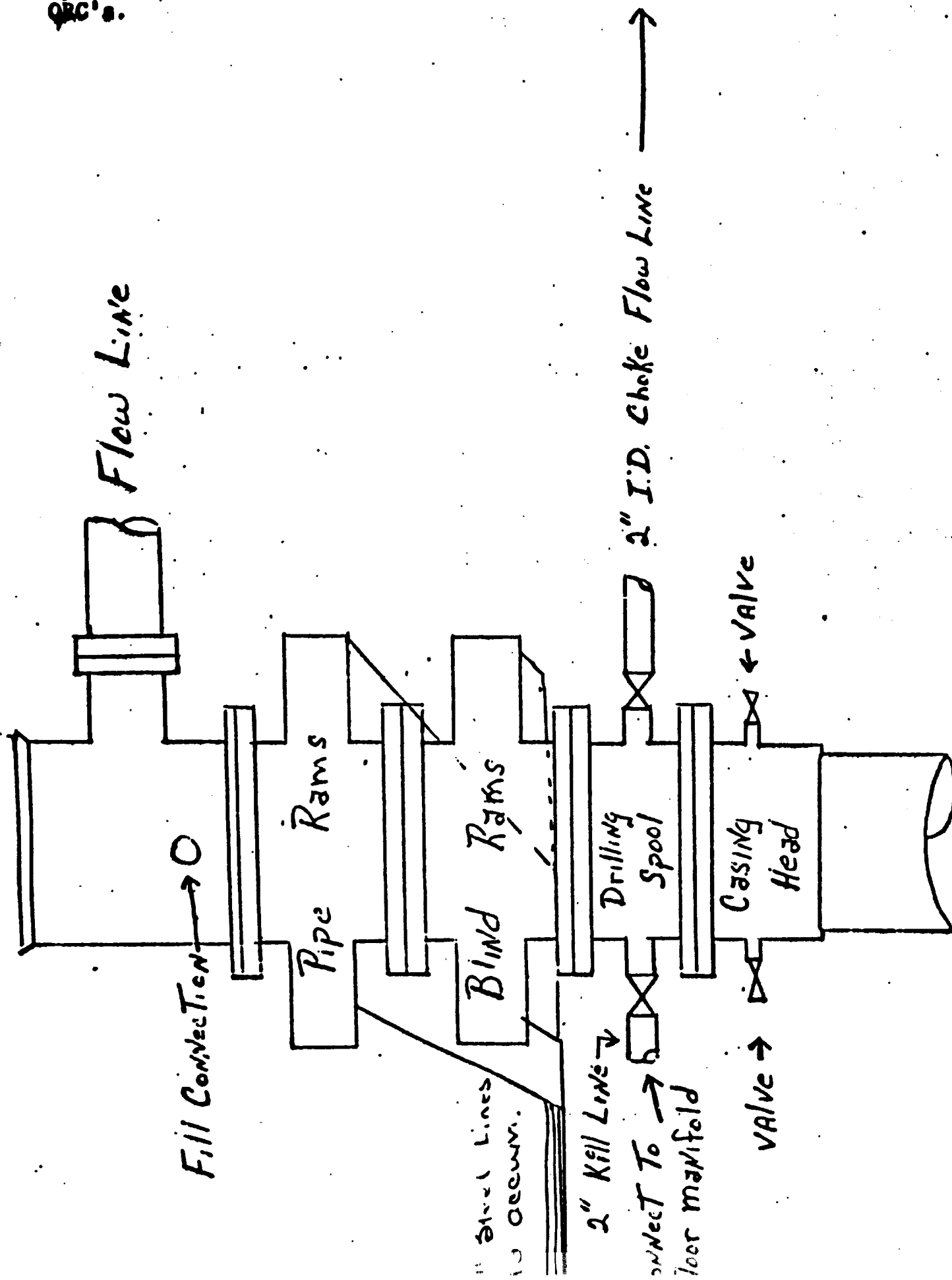
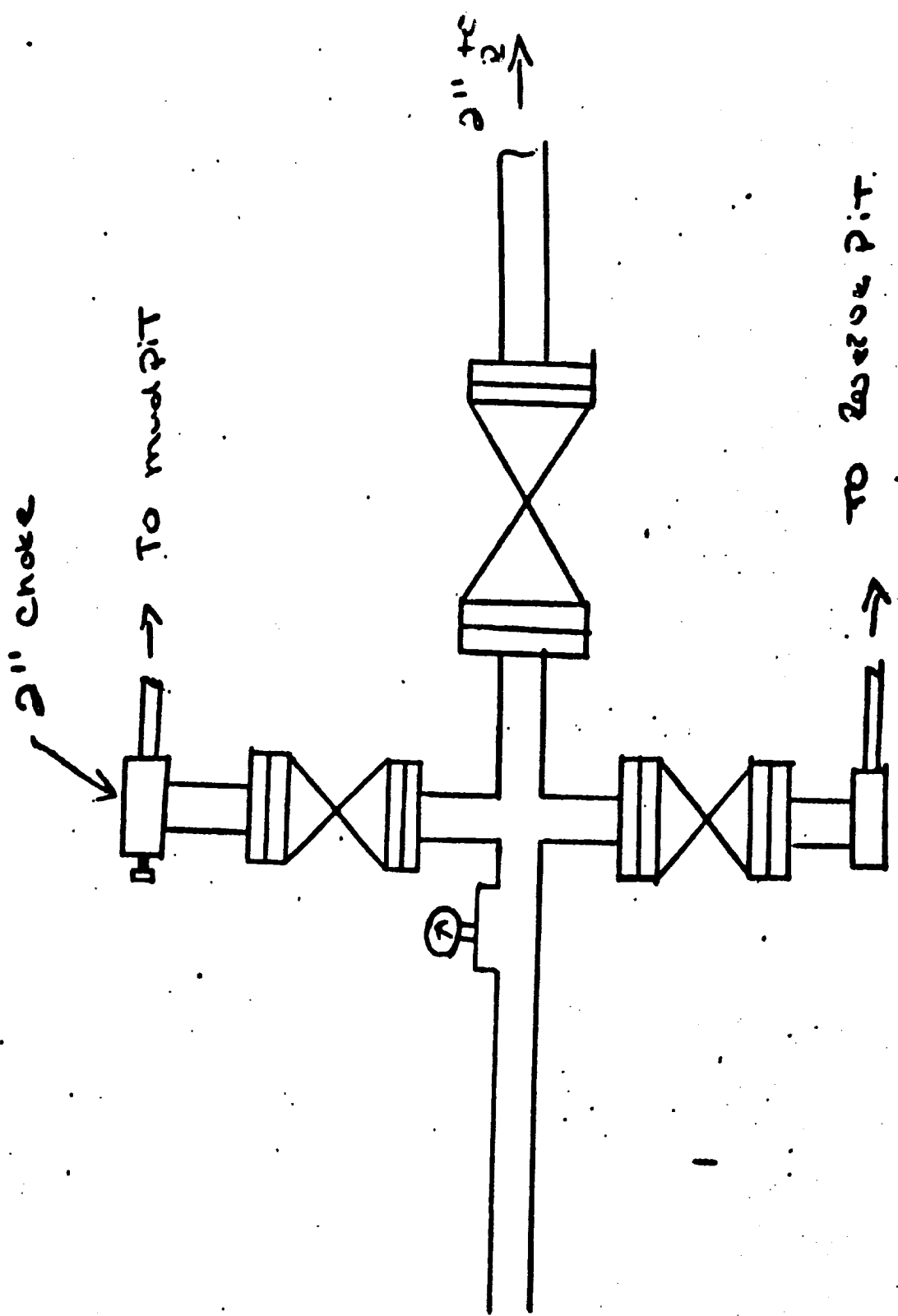


EXHIBIT 'B'
 SIETE OIL & GAS CORPORATION
 SACKETT FEDERAL NO. 2
 1650' FWL & 660' FSL
 Sec. 29, T17S, R29E

BOP Hookups for large casing.
 Pipe & Blind Rams are hydraulic
 operated, Cameron 10" 5000#
 QRC's.





1" Steel Lines to
Pipe Rams & Blind
Rams

Accumulator

Oil operated,
80 gal. reservoir



SIETE OIL & GAS CORPORATION

*Petroleum Building Suite 200
P.O. Box 2523 Roswell, New Mexico 88201
Telephone (505) 622-2202*

December 03, 1985

Bureau of Land Management
Post Office Box 1778
Carlsbad, New Mexico 88220

RE: Electric Line - Sackett Federal #2
Section 29, T-17-S, R31-E
Eddy County, New Mexico
660' FSL & 1650' FWL

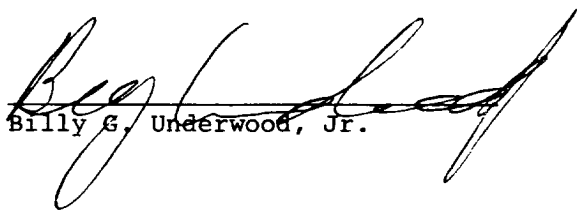
Gentlemen:

This letter will confirm our agreement that in the event Siete Oil and Gas Corporation installs electrical lines and poles for the electrification of the Sackett Federal #2 Well, Siete shall be responsible for the removal of such lines and poles at its expense and shall restore the electrical right-of-way to its present state upon plugging and abandoning the well.

Yours truly,

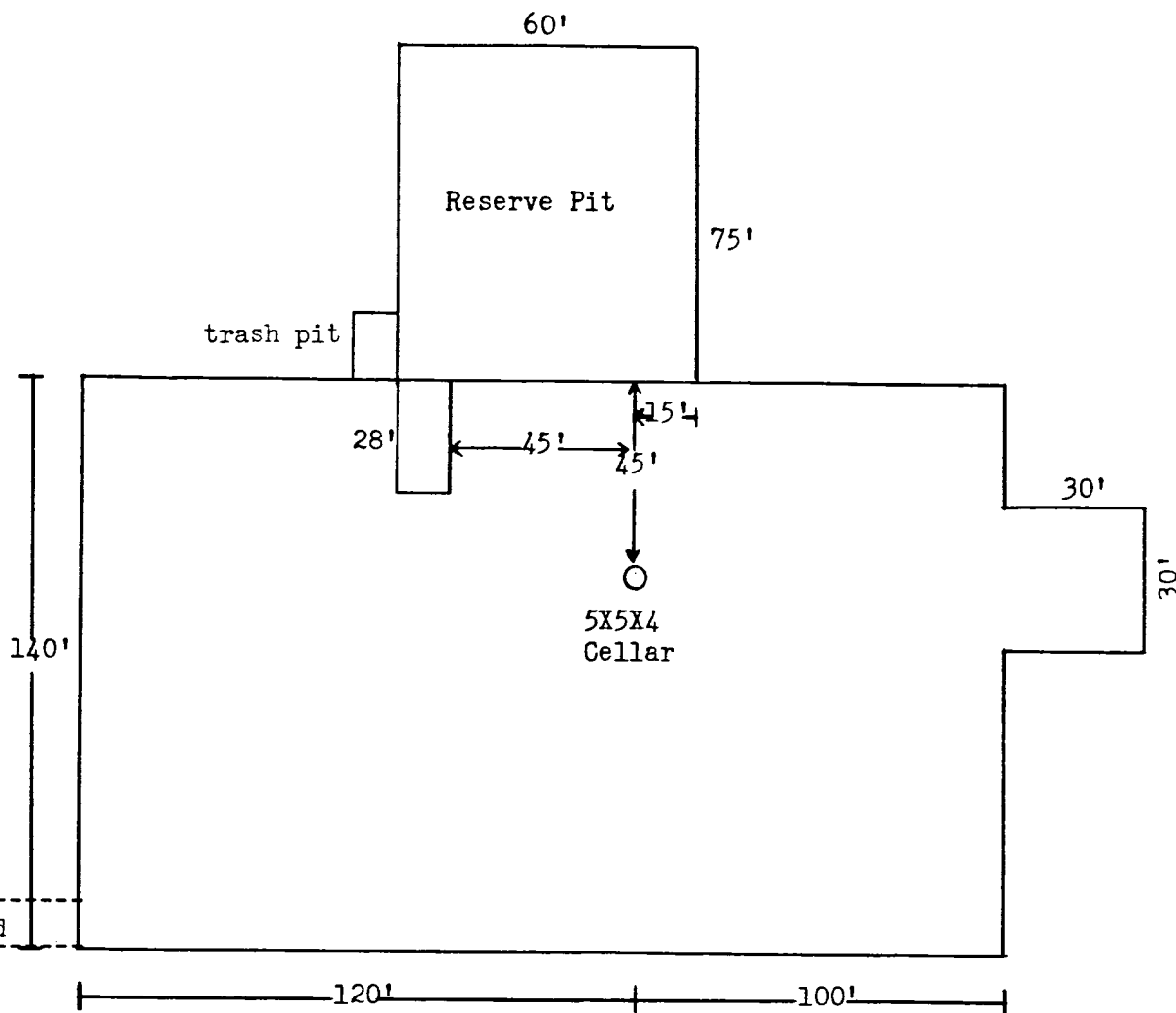
SIETE OIL AND GAS CORPORATION

BY:


Billy G. Underwood, Jr.

BGU/jy

↑
N



I&M Drilling Rig No. 1

EXHIBIT 'D'
SIETE OIL & GAS CORPORATION
SACKETT FEDERAL NO. 2
1650' FWL & 660' FSL
Sec. 29, T17S, R29E
P.D. County, N.M.