

Submit to Appropriate
District Office
State Lease - 6 copies
Fee Lease - 5 copies

State of New Mexico
Energy, Minerals and Natural Resources Department

Form C-101
Revised 1-1-89

451
BLM
St. H
Op

OIL CONSERVATION DIVISION

P.O. Box 2088
Santa Fe, New Mexico 87504-2088

SEP 14 '89

DISTRICT I
P.O. Box 1980, Hobbs, NM 88240

DISTRICT II
P.O. Drawer DD, Artesia, NM 88210

DISTRICT III
1000 Rio Brazos Rd., Aztec, NM 87410

API NO. (assigned by OCD on New Wells)
30-015-25610

5. Indicate Type of Lease
STATE ☒ FEE ☐

6. State Oil & Gas Lease No.
B-1266

7. Lease Name or Unit Agreement Name

G-J West Coop Unit

8. Well No.
82

9. Pool name or Wildcat
Grbg Jackson SR Q Grbg SA

APPLICATION FOR PERMIT TO DRILL, DEEPEN, RE-ENTER OR PLUG BACK

1a. Type of Work:

DRILL ☒ RE-ENTER ☐ DEEPEN ☐ PLUG BACK ☐

b. Type of Well:

OIL WELL ☒ GAS WELL ☐ OTHER ☐ SINGLE ZONE ☒ MULTIPLE ZONE ☐

2. Name of Operator

Marbob Energy Corporation

3. Address of Operator

P. O. Drawer 217, Artesia, NM 88210

4. Well Location

Unit Letter N : 990 Feet From The South Line and 2303 Feet From The West Line

Section 21 Township 17S Range 29E NMPM Eddy County

10. Proposed Depth
5000'

11. Formation
San Andres

12. Rotary or C.T.
Rotary

13. Elevations (Show whether DF, RT, GR, etc.)
3590.3' GR

14. Kind & Status Plug. Bood
Statewide active

15. Drilling Contractor
LaRue Drilling Co.

16. Approx. Date Work will start
9/23/89

17. PROPOSED CASING AND CEMENT PROGRAM

SIZE OF HOLE	SIZE OF CASING	WEIGHT PER FOOT	SETTING DEPTH	SACKS OF CEMENT	EST. TOP
12 1/4"	8 5/8"	24#	200'	Sufficient to circ 650 sx	
7 7/8"	5 1/2"	17#	5000'	to base of salt	

We propose to drill to 200'; run and cement 8 5/8" casing;
drill on to 5000' to test the San Andres zone; run and cement
5 1/2" casing; put on production.

APPROVAL VALID FOR 180 DAYS
PERMIT EXPIRES 3-15-90
UNLESS DRILLING UNDERWAY

Post ID-1
9-15-89
Re-inst.
new loc

IN ABOVE SPACE DESCRIBE PROPOSED PROGRAM: IF PROPOSAL IS TO DEEPEN OR PLUG BACK, GIVE DATA ON PRESENT PRODUCTIVE ZONE AND PROPOSED NEW PRODUCTIVE ZONE. GIVE BLOWOUT PREVENTER PROGRAM, IF ANY.

I hereby certify that the information above is true and complete to the best of my knowledge and belief.

SIGNATURE Rhonda Nelson TITLE Production Clerk DATE 9/13/89

TYPE OR PRINT NAME Rhonda Nelson TELEPHONE NO. 748-3303

(This space for State Use)

ORIGINAL SIGNED BY
MIKE WILLIAMS
SUPERVISOR, DISTRICT II

APPROVED BY _____ DATE SEP 15 1989

CONDITIONS OF APPROVAL, IF ANY:

NEW MEXICO OIL CONSERVATION COMMISSION
WELL LOCATION AND ACREAGE DEDICATION PLAT

Form C-128
Supersedes C-128
Effective 1-1-65

All distances must be from the outer boundaries of the Section

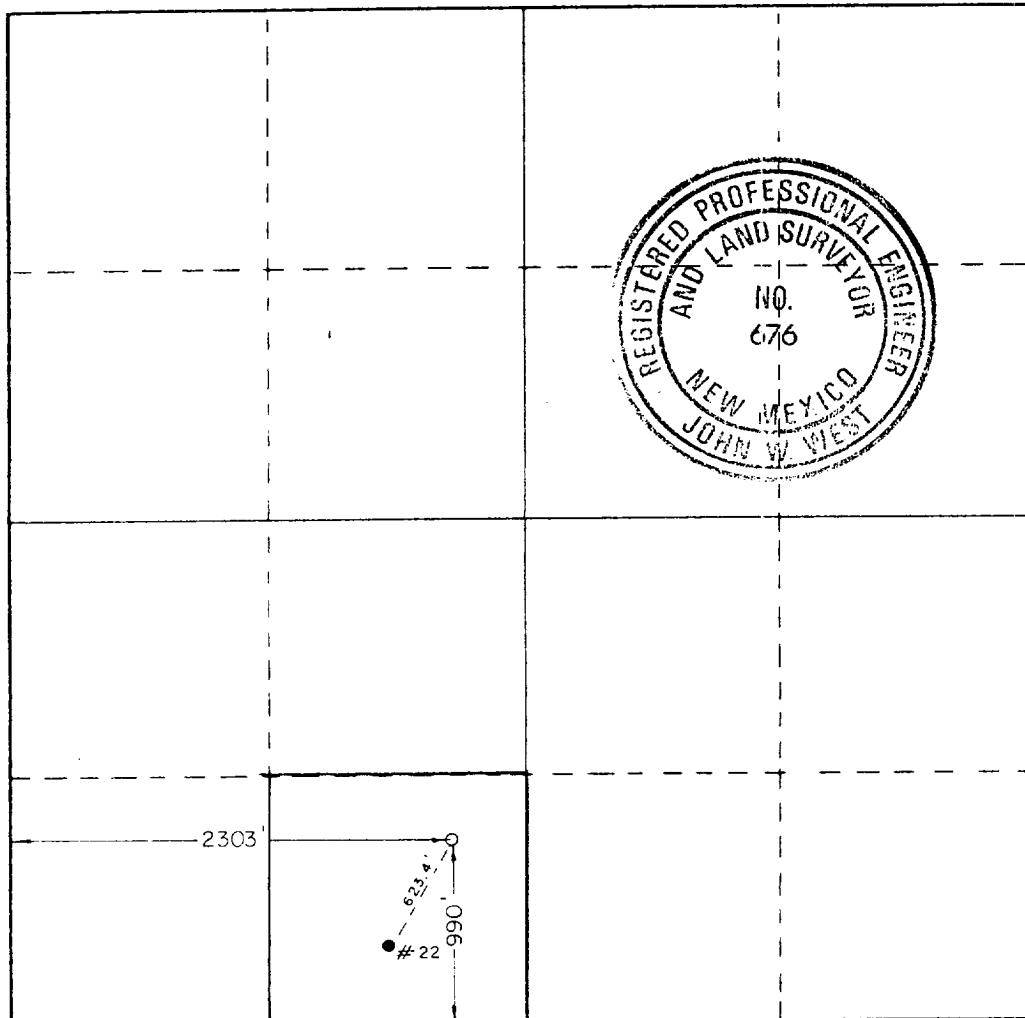
Operator MARBOB ENERGY CORP.			Lease G-1 WEST COOP UNIT		Well No. 82
Tract Letter N	Section 21	Township 17S	Range 29E	County EEDY	
Actual Well Location of Well: 990 feet from the SOUTH line and 2303 feet from the WEST line					
Ground Level Elev. 3590.3	Producing Formation San Andres	Pool Grbg Jackson SR Q G SA	Dedicated Acreage: 40 Acres		

1. Outline the acreage dedicated to the subject well by colored pencil or hatchure marks on the plat below.
2. If more than one lease is dedicated to the well, outline each and identify the ownership thereof (both as to working interest and royalty).
3. If more than one lease of different ownership is dedicated to the well, have the interests of all owners been consolidated by communitization, unitization, force-pooling, etc?

☐ Yes ☐ No If answer is "yes," type of consolidation _____

If answer is "no," list the owners and tract descriptions which have actually been consolidated. (Use reverse side of this form if necessary.) _____

No allowable will be assigned to the well until all interests have been consolidated (by communitization, unitization, forced-pooling, or otherwise) or until a non-standard unit, eliminating such interests, has been approved by the Commission.



CERTIFICATION

I hereby certify that the information contained herein is true and complete to the best of my knowledge and belief.

Carolyn Purcella

Name
Carolyn Purcella

Position
Production Clerk

Company
Marbob Energy Corporation

Date
4/11/86

I hereby certify that the well location shown on this plat was plotted from field notes of actual surveys made by me or under my supervision, and that the same is true and correct to the best of my knowledge and belief.

Date Surveyed
APRIL 2, 1986

Registered Professional Engineer
and/or Land Surveyor

John W. West

Certificate No. JOHN W. WEST, 676
RONALD J. EIDSON, 3239

