

Submit to Appropriate
District Office
State Lease - 6 copies
Fee Lease - 5 copies

State of New Mexico
Energy, Minerals and Natural Resources Department

Form C-101
Revised 1-1-89

OIL CONSERVATION DIVISION

DISTRICT I
P.O. Box 1980, Hobbs, NM 88240

DISTRICT II
P.O. Drawer DD, Artesia, NM 88210

DISTRICT III
1000 Rio Brazos Rd., Aztec, NM 87410

P.O. BOXED
Santa Fe, New Mexico 87504-2088

DEC 26 '90

API NO. (assigned by OCD on New Wells)

30-015-25610

5. Indicate Type of Lease

STATE ☒

FEE ☐

6. State Oil & Gas Lease No.

B-1266

APPLICATION FOR PERMIT TO DRILL, DEEPEN, OR PLUG BACK

1a. Type of Work:

ARTESIA, OFFICE

DRILL ☒

RE-ENTER ☐

DEEPEN ☐

PLUG BACK ☐

b. Type of Well:

OIL
WELL ☒

GAS
WELL ☐

OTHER ☐

SINGLE
ZONE ☒

MULTIPLE
ZONE ☐

7. Lease Name or Unit Agreement Name

G-J West Coop Unit

2. Name of Operator

Marbob Energy Corporation

3. Address of Operator

P. O. Drawer 217, Artesia, NM 88210

8. Well No.

82

9. Pool name or Wildcat

Grbg Jackson Sr Q Grbg SA

4. Well Location

Unit Letter N : 990 Feet From The South Line and 2303 Feet From The West Line

Section 21 Township 17S Range 29E NMPM Eddy County

10. Proposed Depth
4500'

11. Formation
San Andres

12. Rotary or C.T.
Rotary

13. Elevations (Show whether DF, RT, GR, etc.)
3590.3' GR

14. Kind & Status Plug. Bond
Statewide active

15. Drilling Contractor
LaRue Drilling

16. Approx. Date Work will start
1/10/91

17. PROPOSED CASING AND CEMENT PROGRAM

SIZE OF HOLE	SIZE OF CASING	WEIGHT PER FOOT	SETTING DEPTH	SACKS OF CEMENT	EST. TOP
12 1/4"	8 5/8"	24#	350'	to circulate	
7 7/8"	5 1/2"	17#	4500'	Sufficiently attempt to circ	

We propose to drill to 350', run 8 5/8" casing and cement,
drill on to test the San Andres zone, run 5 1/2" casing,
put on production.

APPROVAL VALID FOR 180 DAYS
PERMIT EXPIRES 6/30/91
UNLESS DRILLING UNDERWAY

NOTE: On production string, a fluid caliber will be run,
will figure cement w/25% excess, attempt to circulate.

IN ABOVE SPACE DESCRIBE PROPOSED PROGRAM: IF PROPOSAL IS TO DEEPEN OR PLUG BACK, GIVE DATA ON PRESENT PRODUCTIVE ZONE AND PROPOSED NEW PRODUCTIVE ZONE. GIVE BLOWOUT PREVENTER PROGRAM, IF ANY.

I hereby certify that the information above is true and complete to the best of my knowledge and belief.

SIGNATURE

Rhonda Nelson

TITLE Production Clerk

DATE 12/21/90

TYPE OR PRINT NAME

Rhonda Nelson

TELEPHONE NO. 748-3303

(This space for State Use)

ORIGINAL SIGNED BY

MIKE WILLIAMS

APPROVED BY

SUPERVISOR, DISTRICT II

TITLE

DATE

DEC 26 1990

CONDITIONS OF APPROVAL, IF ANY:

NEW MEXICO OIL CONSERVATION COMMISSION
WELL LOCATION AND ACREAGE DEDICATION PLAT

Form C-102
Supersedes C-128
Effective 1-1-65

All distances must be from the outer boundaries of the Section

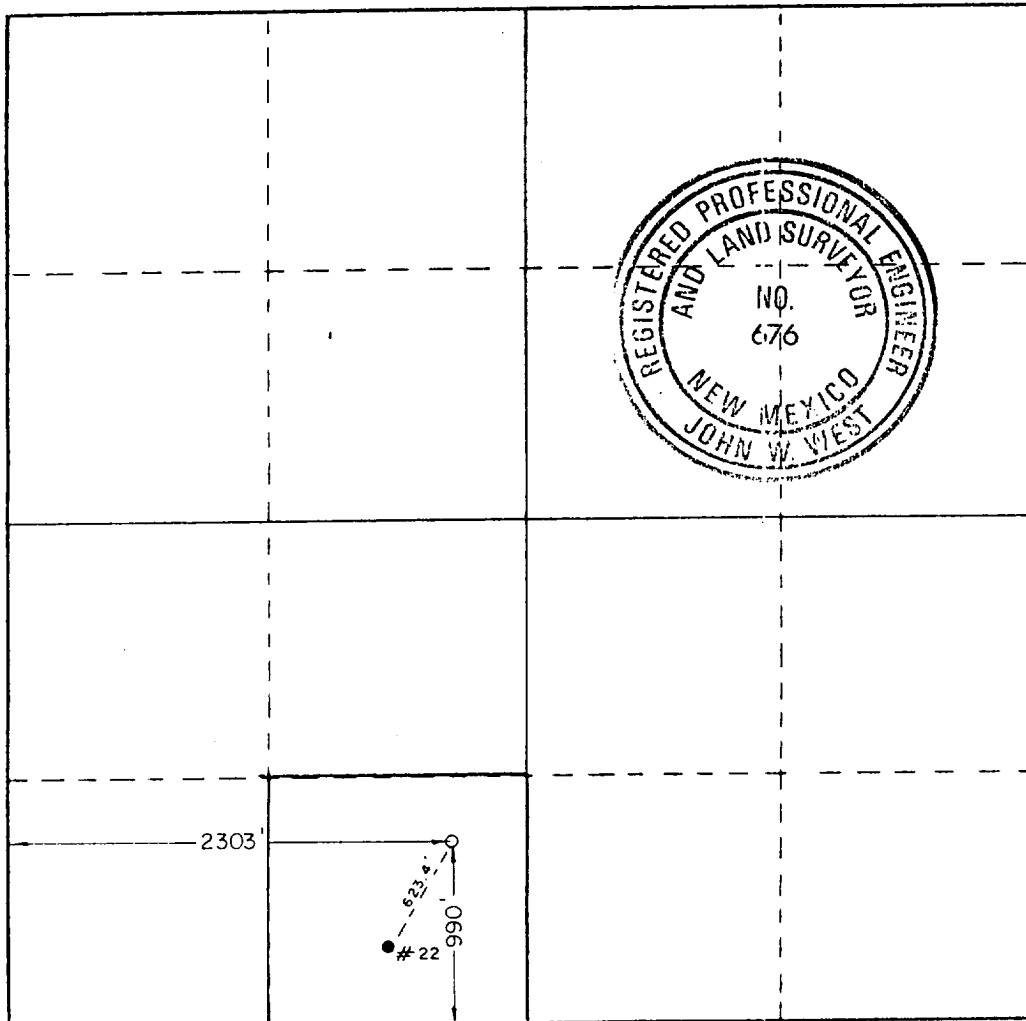
Operator MARBOb ENERGY CORP.			Lease G-J WEST COOP UNIT			Well No. 82		
Unit Letter N	Section 21	Township 17S	Range 29E	County EDDY				
Actual Footage Location of Well: 990 feet from the SOUTH line and 2303 feet from the WEST line								
Ground Level Elev. 3590.3	Producing Formation San Andres		Pool Grbg Jackson SR Q G SA			Dedicated Acreage: 40 Acres		

1. Outline the acreage dedicated to the subject well by colored pencil or hachure marks on the plat below.
2. If more than one lease is dedicated to the well, outline each and identify the ownership thereof (both as to working interest and royalty).
3. If more than one lease of different ownership is dedicated to the well, have the interests of all owners been consolidated by communitization, unitization, force-pooling, etc?

☐ Yes ☐ No If answer is "yes," type of consolidation _____

If answer is "no," list the owners and tract descriptions which have actually been consolidated. (Use reverse side of this form if necessary.) _____

No allowable will be assigned to the well until all interests have been consolidated (by communitization, unitization, forced-pooling, or otherwise) or until a non-standard unit, eliminating such interests, has been approved by the Commission.



CERTIFICATION

I hereby certify that the information contained herein is true and complete to the best of my knowledge and belief.

Carolyn Purcella

Name

Carolyn Purcella

Position

Production Clerk

Company

Marbob Energy Corporation

Date

4/11/86

I hereby certify that the well location shown on this plat was plotted from field notes of actual surveys made by me or under my supervision, and that the same is true and correct to the best of my knowledge and belief.

Date Surveyed

APRIL 2, 1986

Registered Professional Engineer and/or Land Surveyor

John W. West

Certificate No. JOHN W. WEST, 676
RONALD J. EIDSON, 3239

