

UNITED STATES  
DEPARTMENT OF THE INTERIOR  
BUREAU OF LAND MANAGEMENT

APPLICATION FOR PERMIT TO DRILL, DEEPEN, OR PLUG BACK

1a. TYPE OF WORK  
RE DRILL ☒ DEEPEN ☐ PLUG BACK ☐

b. TYPE OF WELL  
OIL WELL ☒ GAS WELL ☐ OTHER ☐

2. NAME OF OPERATOR  
TOM SCHNEIDER  
Schneider & Grauten

3. ADDRESS OF OPERATOR  
505 North Big Spring, Suite 204 Midland, Texas 79701

4. LOCATION OF WELL (Report location clearly and in accordance with any State requirements.)  
At surface 1,980' FEL - 2,100' ENL of Section 6,  
T-17-S, R-29E  
At proposed prod. zone Same  
14. DISTANCE IN MILES AND DIRECTION FROM NEAREST TOWN OR POST OFFICE\*  
9 miles NW of Loco Hills, NM  
15. DISTANCE FROM PROPOSED\*  
LOCATION TO NEAREST  
PROPERTY OR LEASE LINE, FT.  
(Also to nearest drilg. unit line, if any) 1980'  
16. NO. OF ACRES IN LEASE 531  
17. NO. OF ACRES ASSIGNED TO THIS WELL 40  
18. DISTANCE FROM PROPOSED LOCATION\*  
TO NEAREST WELL, DRILLING, COMPLETED,  
OR APPLIED FOR, ON THIS LEASE, FT. 4350'  
19. PROPOSED DEPTH 4350'  
20. ROTARY OR CABLE TOOLS Rotary  
21. ELEVATIONS (Show whether DF, RT, GR, etc.)  
3708.6 GL  
22. APPROX. DATE WORK WILL START\*  
December 18, 1989

PROPOSED CASING AND CEMENTING PROGRAM

HOLE SIZE	CASING SIZE	WEIGHT/FOOT	GRADE	THREAD TYPE	SETTING DEPTH	QUANTITY OF CEMENT
* 17-1/2"	13-3/8"	54 & 50	J - 55	ST & C	320'	325 sx.
* 11"	8-5/8"	24 & 32	J - 55	ST & C	2635'	1320 sx.
*** 7-7/8"	5-1/2"	15; 5 #	J - 55	ST & C	4350'	510 sx.

NOTE: It is proposed to bring cement back to 1,700' beneath the surface in order to seal off the existing perforations from 2518' - 2514'; 2439' - 2416' and 1903' - 1899'.

see attached

SJS

- \* Existing
- \*\* Cement Circulation
- \*\*\* Proposed

IN ABOVE SPACE DESCRIBE PROPOSED PROGRAM: If proposal is to deepen or plug back, give data on present productive zone and proposed new productive zone. If proposal is to drill or deepen directionally, give pertinent data on subsurface locations and measured and true vertical depths. Give blowout preventer program, if any.

24. SIGNED \_\_\_\_\_ TITLE Owner DATE 12-12-89  
(This space for Federal or State office use)

PERMIT NO. \_\_\_\_\_ APPROVAL DATE \_\_\_\_\_

APPROVED BY \_\_\_\_\_ TITLE PETROLEUM ENGINEER DATE 12-20-89  
CONDITIONS OF APPROVAL, IF ANY: \_\_\_\_\_

\*See Instructions On Reverse Side

# Lynn E. Foster

CONSULTING PETROLEUM ENGINEER

Box 2512 • MIDLAND, TEXAS 79701 • (915) 684-5126 OR 683-3174

## RECOMPLETION PROCEDURE

Empire Federal "6" No. 1 Well

Eddy County, New Mexico

1. Rig up pulling unit and pull rods, pump and tubing.
2. Rig up reverse rig, pick up 7-7/8" mill-tooth bit, 6 - 5-3/4" O. D. drill collars, x-over, and go in hole with 2-7/8" tubing.
3. Drill up Cast Iron Bridge Plug @ 2,591' and cement plug from 2,626' to 2,685'. Circulate hole clean.
4. Run in hole to 4,350' and tag cement plug @ 4,350'. If no plug is found @ 4,350', circulate hole 2 hours to clean hole and determine if fluid is being lost in hole.
5. Pull out of hole and lay down drill collars.
6. Rig up casing tools and run 5-1/2" O. D. 15.5 #/ft. K-55 used casing to 4,350'. Use shortest joint of 5-1/2" casing for shoe joint. Run guide shoe, float collar and 12 centralizers across the Glorieta and San Andres porosity zones.
7. Preced cement with 500 gallons of Mud Flush and 500 gallons of Flochek -21. Cement with 510 sacks of Class "H" cement containing 2/10 of 1 % CFR-3. Mix cement with 5.20 gallons of water per sack for a slurry weight of 15.6 lbs/gal. and a slurry yield of 1.18 cu.ft/sack.
8. Check float and if holding set slips on 5-1/2" casing and release pressure on casing.
9. Wait on cement 24 hours before any stimulation is attempted.
10. Cut off 5-1/2" casing and weld on bell nipple. Install tubing head.
11. Install adaptor flange and nipple up BOP.
12. Rig up loggers and run cement bond log from TD to 100' above top of cement.
13. Perforate Glorieta selectively with shots to be determined by geologist. Use 4" gun and 23-gram DML XXIII charges.
14. Acidize above perforations per Steps 1 thru 11 of the attached Halliburton procedure.
15. Swab well to determine producing capacity.
16. If deemed feasible, re-acidize well per Step 13 of the Halliburton procedure.
17. Swab test well and if deemed productive pull tubing and lay down packer.
18. Run tubing, pump and rods. Place well on production.

NEW MEXICO OIL CONSERVATION COMMISSION  
WELL LOCATION AND ACREAGE DEDICATION PLAT

Form C-102  
Supersedes C-128  
Effective 1-1-65

All distances must be from the outer boundaries of the Section

Operator <b>SCHNEIDER &amp; GRAUTEN</b>			Lease <b>EMPIRE FEDERAL</b>		Well No. <b>1</b>
Section <b>10</b>	Township <b>22N</b>	Range <b>20E</b>	County <b>EDMON</b>		

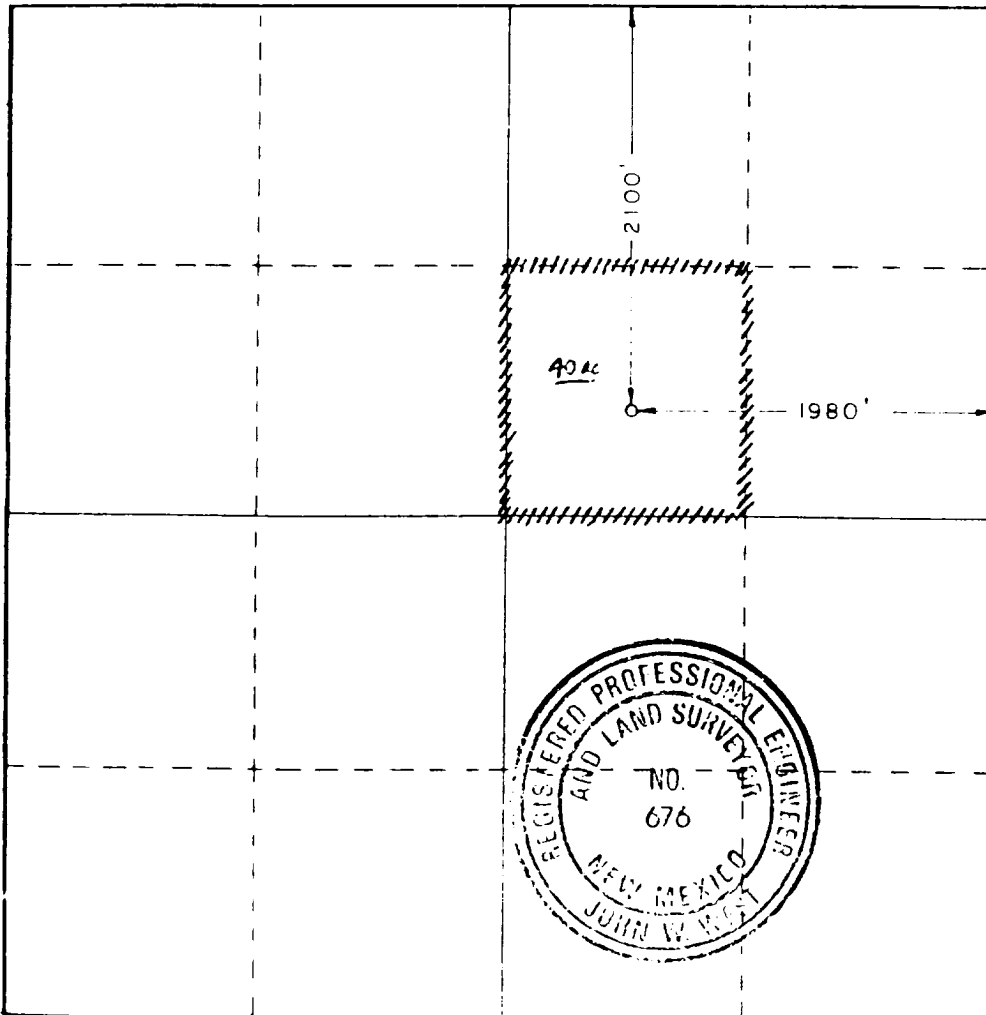
Actual Location of Well:  
 2100 feet from the NORTH line and 1980 feet from the EAST line  
 Ground Level Elev. **3705.0** Producing Formation **GLORIETA** Well **WILDCAT** Dedicated Acreage **40** Acres

- 1 Outline the acreage dedicated to the subject well by colored pencil or hatchure marks on the plat below.
- 2 If more than one lease is dedicated to the well, outline each and identify the ownership thereof (both as to working interest and royalty).
- 3 If more than one lease of different ownership is dedicated to the well, have the interests of all owners been consolidated by communitization, unitization, force-pooling, etc?

☐ Yes ☐ No If answer is "yes" type of consolidation \_\_\_\_\_

If answer is "no," list the owners and tract descriptions which have actually been consolidated (Use reverse side of this form if necessary.) \_\_\_\_\_

No allowable will be assigned to the well until all interests have been consolidated (by communitization, unitization, forced-pooling, or otherwise) or until a non-standard unit, eliminating such interests, has been approved by the Commission.



CERTIFICATION

I hereby certify that the information contained herein is true and complete to the best of my knowledge and belief.

Name  
**Tom Schneider**  
 Profession  
**Geologist**  
 Company  
**Schneider & Grauten**  
 Date  
**12/12/89**

I hereby certify that the well location shown on this plat was plotted from field notes of actual surveys made by me or under my supervision, and that the same is true and correct to the best of my knowledge and belief.

Date Surveyed  
**DECEMBER 12, 1989**  
 Registered Professional Engineer and Land Surveyor  
 Certificate No. **676**  
**RONALD J. EIDSON** 3239