

UNITED STATES
DEPARTMENT OF THE INTERIOR
BUREAU OF LAND MANAGEMENT

NEW OIL CONT. INSTRUCTIONS
Drill or Plug Back
SUBMIT IN TRIPLICATE*
(Other instructions on reverse side)

30-015-25692
Form approved.
Budget Bureau No. 1004-0136
Expires August 31, 1985

APPLICATION FOR PERMIT TO DRILL, DEEPEN, OR PLUG BACK

1a. TYPE OF WORK

DRILL ☒

DEEPEN ☐

PLUG BACK ☐

b. TYPE OF WELL

OIL
WELL ☒

GAS
WELL ☐

OTHER ☐

SINGLE ☒

MULTIPLE ☐

2. NAME OF OPERATOR

Beach Exploration, Inc.

3. ADDRESS OF OPERATOR

800 N. Marienfeld Suite 200 Midland, Texas 79701

4. LOCATION OF WELL (Report location clearly and in accordance with any State requirements.)

At surface

660' FSL & 1980' FEL

At proposed prod. zone 1680

(Unit 0)

(SW/4 SE/4)

Same

14. DISTANCE IN MILES AND DIRECTION FROM NEAREST TOWN OR POST OFFICE*

15 Miles East of Artesia, New Mexico

15. DISTANCE FROM PROPOSED*

LOCATION TO NEAREST
PROPERTY OR LEASE LINE, FT.
(Also to nearest drlg. unit line, if any)

660'

16. NO. OF ACRES IN LEASE

800

17. NO. OF ACRES ASSIGNED
TO THIS WELL

40

18. DISTANCE FROM PROPOSED LOCATION*
TO NEAREST WELL, DRILLING, COMPLETED,
OR APPLIED FOR, ON THIS LEASE, FT.

NA

19. PROPOSED DEPTH

2750'

20. ROTARY OR CABLE TOOLS

Rotary

21. ELEVATIONS (Show whether DF, RT, GR, etc.)

3676.9 GL

22. APPROX. DATE WORK WILL START*

November 21, 1986

23.

PROPOSED CASING AND CEMENTING PROGRAM

SIZE OF HOLE	SIZE OF CASING	WEIGHT PER FOOT	SETTING DEPTH	QUANTITY OF CEMENT
12"	8 5/8"	23#	300	Sufficient to Circulate
7 7/8"	4 1/2"	10.5#	2750	500+ Sxs Class C

Pay zone will be perforated and stimulated for production.

Attachments:

Area Raod Map
Topo
Surface Map

IN ABOVE SPACE DESCRIBE PROPOSED PROGRAM: If proposal is to deepen or plug back, give data on present productive zone and proposed new productive zone. If proposal is to drill or deepen directionally, give pertinent data on subsurface locations and measured and true vertical depths. Give blowout preventer program, if any.

24.

SIGNED

Supervisor

TITLE Production

DATE 11-18-86

(This space for Federal or State office use)

PERMIT NO.

APPROVAL DATE

APPROVED BY

TITLE

DATE

12-1-86

CONDITIONS OF APPROVAL, IF ANY:

*See Instructions On Reverse Side

Title 18 U.S.C. Section 1001, makes it a crime for any person knowingly and willfully to make to any department or agency of the United States any false, fictitious or fraudulent statements or representations as to any matter within its jurisdiction.

**N. MEXICO OIL CONSERVATION COMMISSION
WELL LOCATION AND ACREAGE DEDICATION PLAT**

Form C-102
Supersedes C-128
Effective 1-1-65

All distances must be from the outer boundaries of the Section.

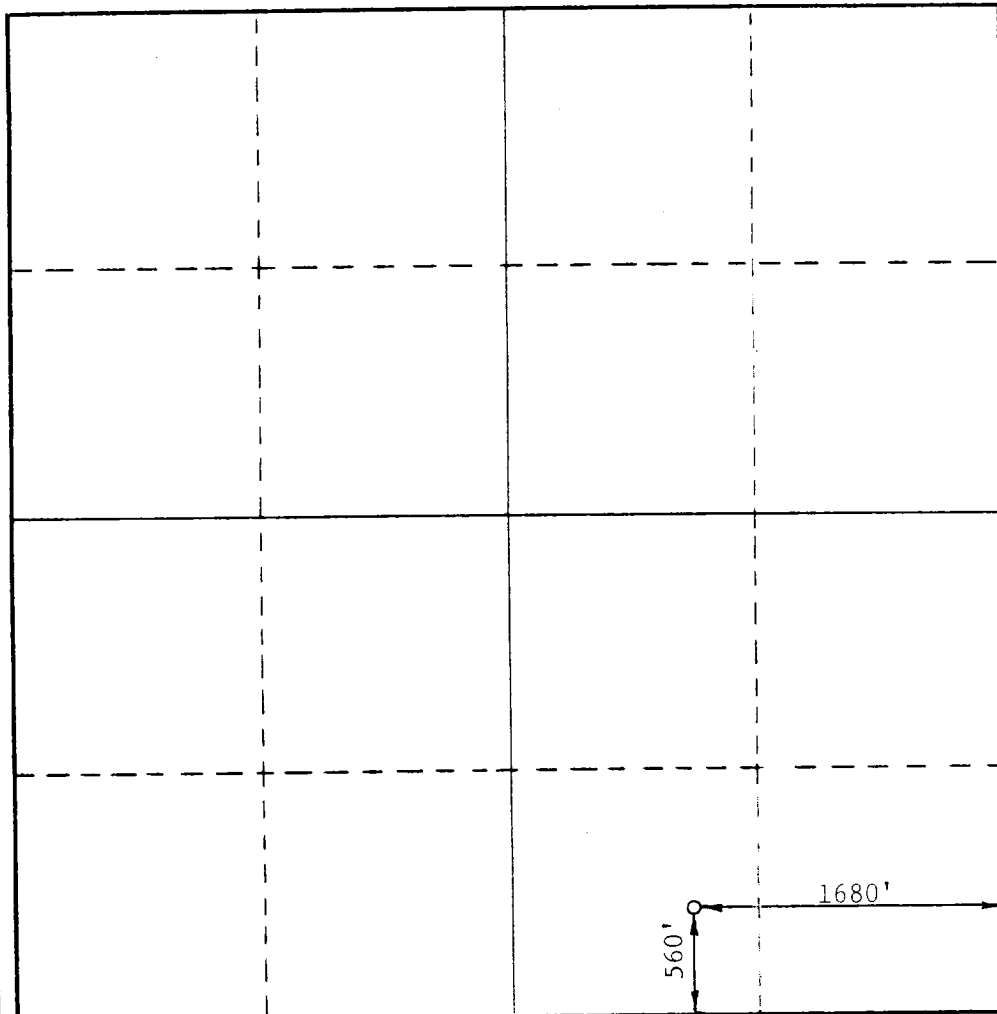
Operator Beach Exploration, Inc.		Lease Phillips Federal		Well No. 1
Unit Letter 0	Section 7	Township 17 South	Range 29 East	County Eddy
Actual Footage Location of Well: 560 feet from the South line and 1680 feet from the East line				
Ground Level Elev. 3676.9	Producing Formation Queen	Pool Cave	Dedicated Acreage: 40 Acres	

1. Outline the acreage dedicated to the subject well by colored pencil or hachure marks on the plat below.
2. If more than one lease is dedicated to the well, outline each and identify the ownership thereof (both as to working interest and royalty).
3. If more than one lease of different ownership is dedicated to the well, have the interests of all owners been consolidated by communitization, unitization, force-pooling, etc?

☐ Yes ☐ No If answer is "yes," type of consolidation _____

If answer is "no," list the owners and tract descriptions which have actually been consolidated. (Use reverse side of this form if necessary.) _____

No allowable will be assigned to the well until all interests have been consolidated (by communitization, unitization, forced-pooling, or otherwise) or until a non-standard unit, eliminating such interests, has been approved by the Commission.



CERTIFICATION

I hereby certify that the information contained herein is true and complete to the best of my knowledge and belief.

Barbara Watson

Name

Barbara Watson

Position

Production

Company

Beach Exploration, Inc.

Date

11-25-86

I hereby certify that the well location shown on this plat was plotted from field notes of actual surveys made by me or under my supervision, and that the same is true and correct to the best of my knowledge and belief.

Date Surveyed

11-25-1986

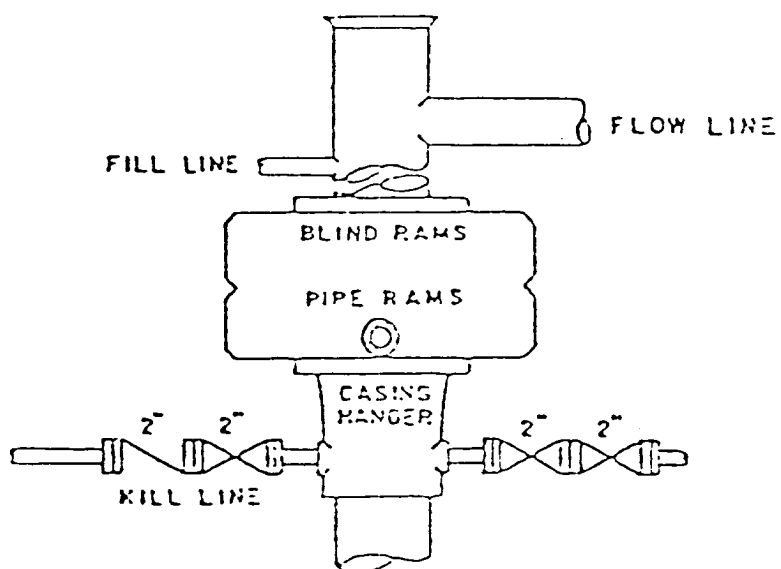
Registered Professional Engineer
and/or Land Surveyor

Ronald J. Eidson

Certificate No. **JOHN W. WEST, 676**
RONALD J. EIDSON, 3239

BLOWOUT PREVENTER ARRANGEMENT

Beach Exploration, Inc.
Phillips Federal #1
SW/4 SE/4



BEACH EXPLORATION, INC.
WELL NO. 1 PHILLIPS FEDERAL
SW1/4SE1/4 of SEC. 7, T17S, R29E
EDDY COUNTY, NEW MEXICO

1. Surface Formation: Sandy soils of Quaternary Age.

2. Estimated Tops of Geologic Markers:

Andydrite	680'	Penrose	1887'
Yates	820'	Grayburg	2057'
Seven Rivers	1045'	Premier	2397'
Queen	1647'	San Andres	2427'

3. Anticipated Porosity Zones:

Water: Above 150'

Oil: Seven Rivers, Queen, Grayburg, Premier, San Andres

4. Casing Design:

Size	Interval	Weight	Grade	Joints
8 5/8"	0-300'	23.0#	K-55	STC
4 1/2"	0-2750'	10.5#	K-55	STC

5. Pressure Control Equipment: Double Ram-Type Preventer

6. Circulating Medium:

0 - 300' Fresh water mud with gel or lime as
needed for viscosity control.

300'- 1850' Brine Water

1850'- 2750' Mud up to TD

7. Auxiliary Equipment: Drill string safety valve.

8. Testing, logging and coring program: No coring or DST's
are planned. Electric logs will include a CNL-FDC w/GR.

9. Abnormal pressure, Temperatures or gases: None Anticipated

10. Anticipated Starting Date: Approximately November 21, 1986

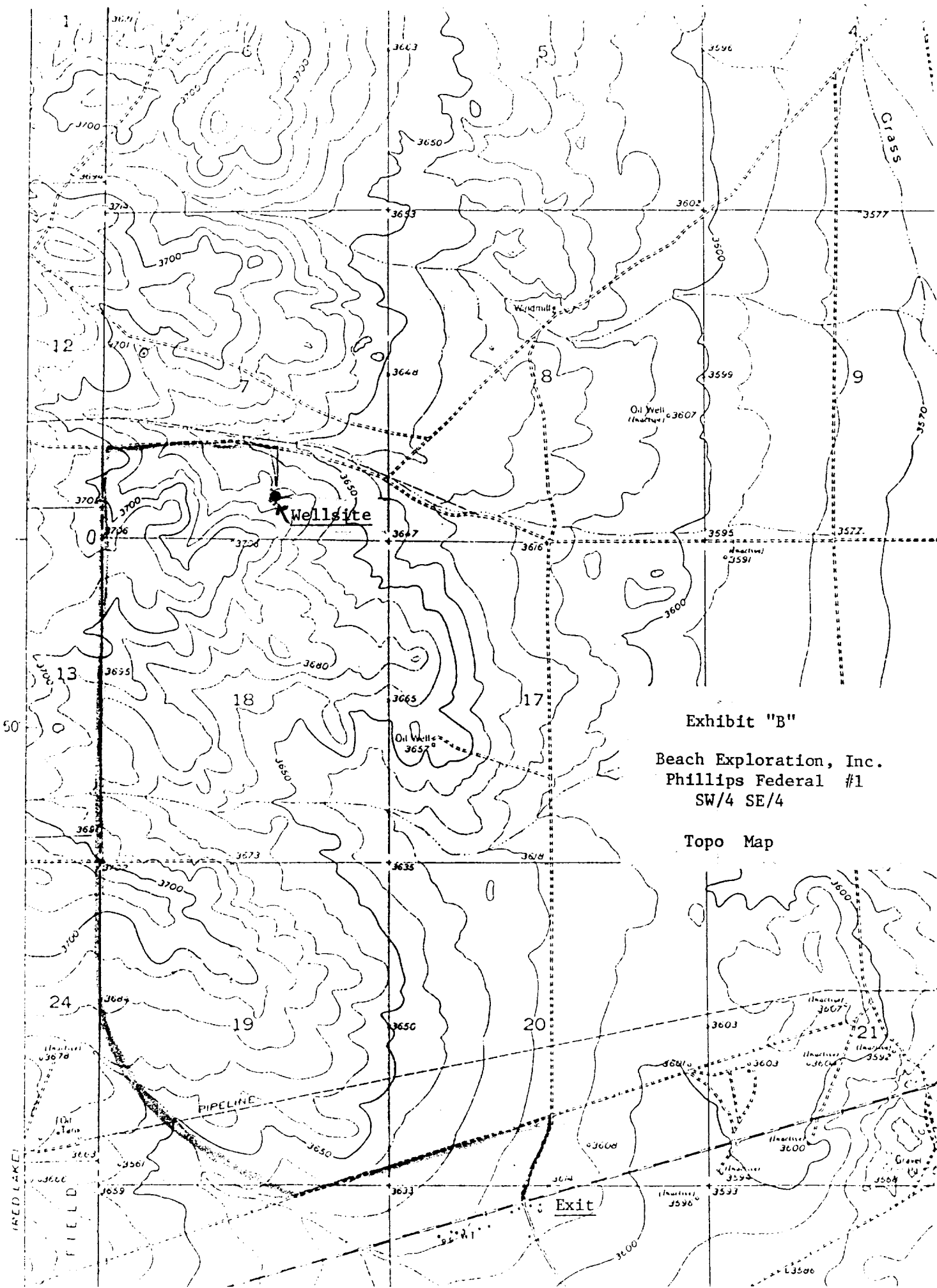


Exhibit "B"

Beach Exploration, Inc.
Phillips Federal #1
SW/4 SE/4

Topo Map

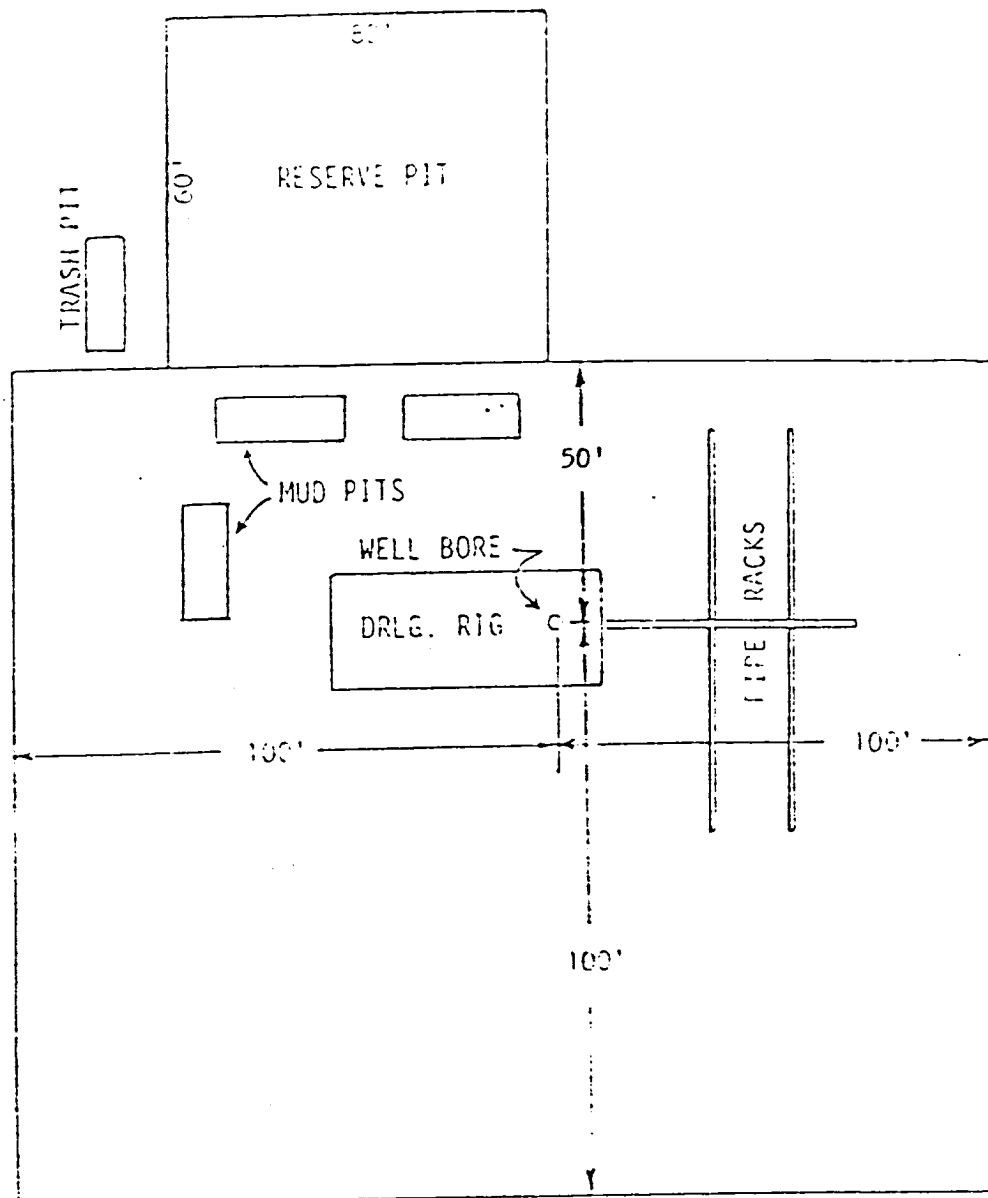


Exhibit "D"
 SKETCH OF WELL PAD
 Beach Exploration, Inc.
 Phillips Federal #1
 SW/4 SE/4