

ARTESIA, NM 88210
UNITED STATES
DEPARTMENT OF THE INTERIOR
GEOLOGICAL SURVEY30-015-25740
5. LEASE DESIGNATION AND SERIAL NO
LC-028731 (B)
6. IF INDIAN, ALLOTTEE OR TRIBE NAME

APPLICATION FOR PERMIT TO DRILL, DEEPEN, OR PLUG BACK

1a. TYPE OF WORK

DRILL ☒DEEPEN ☐PLUG BACK ☐

b. TYPE OF WELL

OIL
WELL ☒GAS
WELL ☐

OTHER

SINGLE
ZON ☒MULTIPLE
ZON ☐

2. NAME OF OPERATOR

Marbob Energy Corporation

3. ADDRESS OF OPERATOR

P.O. Drawer 217, Artesia, NM 88210

4. LOCATION OF WELL (Report location clearly and in accordance with any State requirements.)

At surface

834 FSL 819 FEL

At proposed prod. zone

Same

14. DISTANCE IN MILES AND DIRECTION FROM NEAREST TOWN OR POST OFFICE*

20 air miles east of Artesia, N.M. 88210

15. DISTANCE FROM PROPOSED*

LOCATION TO NEAREST

PROPERTY OR LEASE LINE, FT.

(Also to nearest drilg. unit line, if any)

819'

18. DISTANCE FROM PROPOSED LOCATION*

TO NEAREST WELL, DRILLING, COMPLETED,

OR APPLIED FOR, ON THIS LEASE, FT.

705'

21. ELEVATIONS (Show whether DF, RT, GR, etc.)

3606.8 GR

23.

PROPOSED CASING AND CEMENTING PROGRAM

SIZE OF HOLE	SIZE OF CASING	WEIGHT PER FOOT	SETTING DEPTH	QUANTITY OF CEMENT
12 1/4"	8 5/8"	24.0#	250'	Sufficient of circulate
7 7/8"	5 1/2"	15.5#	5000'	1500 sax, to base of salt

Pay zone will be selectively perforated and stimulated as needed for optimum production.

Attached are: 1. Location & acreage dedication plat
2. Supplemental drilling data
3. Surface use plan

IN ABOVE SPACE DESCRIBE PROPOSED PROGRAM: If proposal is to deepen or plug back, give data on present productive zone and proposed new productive zone. If proposal is to drill or deepen directionally, give pertinent data on subsurface locations and measured and true vertical depths. Give blowout preventer program, if any.

24.

SIGNED

D. J. Wallace

TITLE

Production Clerk

DATE

12/01/86

(This space for Federal or State office use)

PERMIT NO.

APPROVAL DATE

APPROVED BY

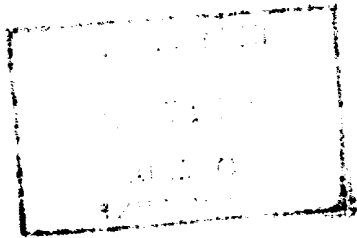
TITLE

DATE

12.11.86

CONDITIONS OF APPROVAL, IF ANY:

*See Instructions On Reverse Side



NEW MEXICO OIL CONSERVATION COMMISSION
WELL LOCATION AND ACREAGE DEDICATION PLAT

Form C-102
Supersedes C-128
Effective 1-1-65

All distances must be from the outer boundaries of the Section

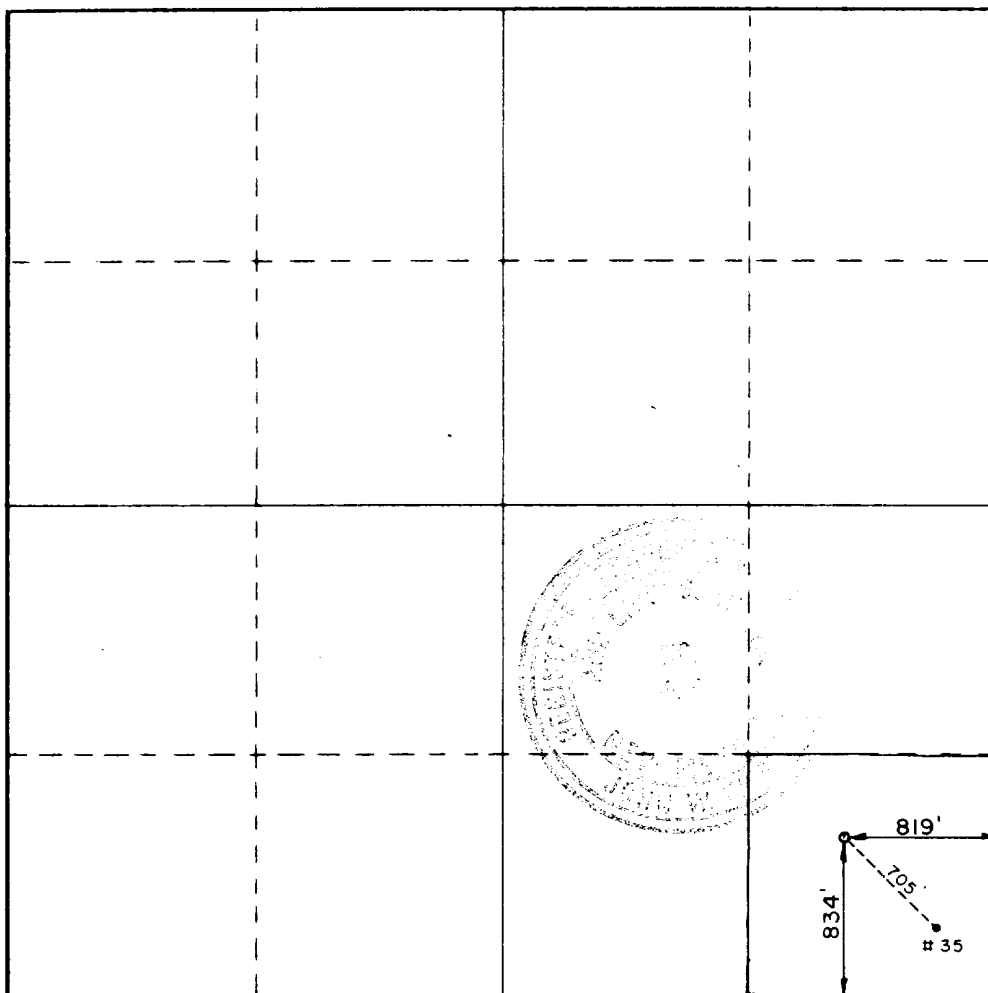
Operator MARBOB ENERGY CORP.		Lease M. DODD "B"		Well No. 59
Unit Letter P	Section 14	Township 17-S	Range 29-E	County EDDY
Actual Footage Location of Well: 834 feet from the SOUTH line and 819 feet from the EAST line				
Ground Level Elev. 3606.8	Producing Formation San Andres	Pool Grbg Jackson SR Q Gb SA	Dedicated Acreage: 40 Acres	

1. Outline the acreage dedicated to the subject well by colored pencil or hachure marks on the plat below.
2. If more than one lease is dedicated to the well, outline each and identify the ownership thereof (both as to working interest and royalty).
3. If more than one lease of different ownership is dedicated to the well, have the interests of all owners been consolidated by communitization, unitization, force-pooling, etc?

☐ Yes ☐ No If answer is "yes," type of consolidation _____

If answer is "no," list the owners and tract descriptions which have actually been consolidated. (Use reverse side of this form if necessary.) _____

No allowable will be assigned to the well until all interests have been consolidated (by communitization; unitization, forced-pooling, or otherwise) or until a non-standard unit, eliminating such interests, has been approved by the Commission.



CERTIFICATION

I hereby certify that the information contained herein is true and complete to the best of my knowledge and belief.

DeNette Wallace

Name

DeNette Wallace

Position

Production Clerk

Company

Marbob Energy Corporation

Date

12/01/86

I hereby certify that the well location shown on this plat was plotted from field notes of actual surveys made by me or under my supervision, and that the same is true and correct to the best of my knowledge and belief.

Date Surveyed

11-24-1986

Registered Professional Engineer and/or Land Surveyor

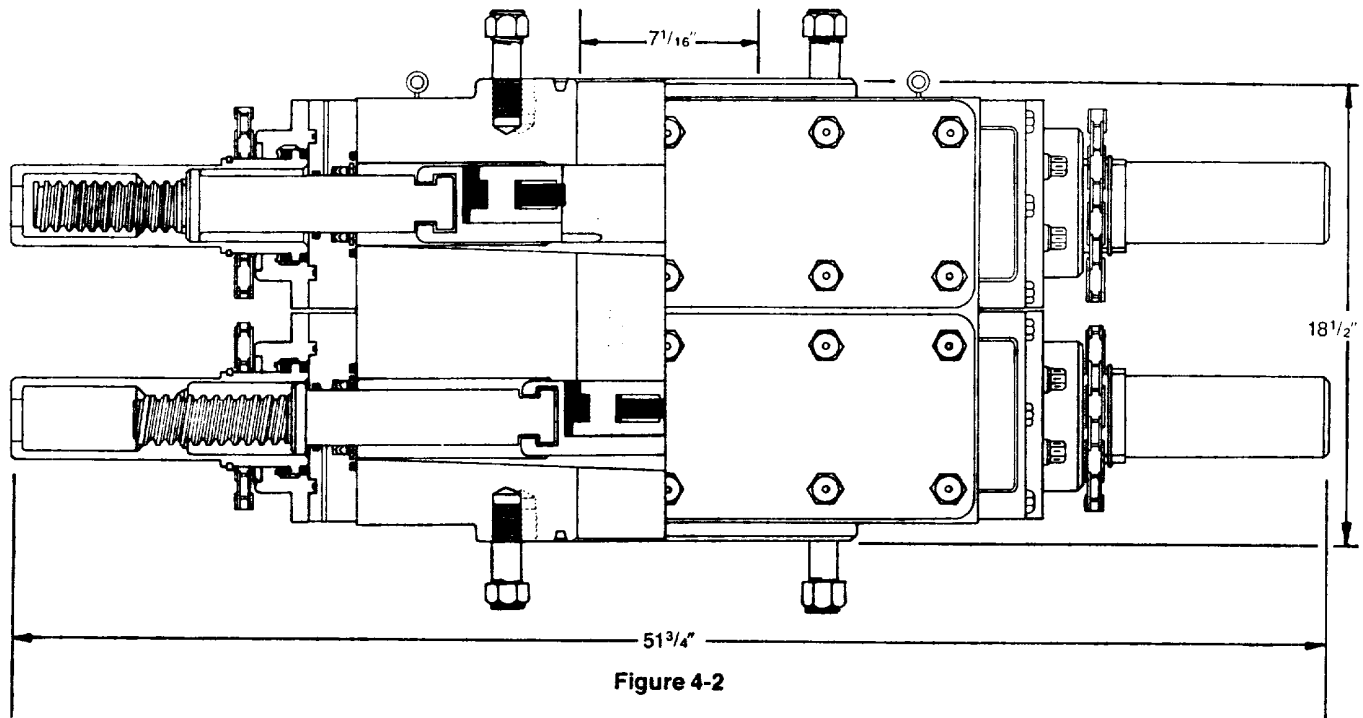
John W. West

Certificate No. *JOHN W. WEST,* 676

RONALD J. EIDSON, 3239

96560

0 330 660 990 1320 1650 1980 2310 2640 2970 3300 3630 3960 4290 4620 4950 5280 5610 5940 6270 6600 6930 7260 7590 7920 8250 8580 8910 9240 9570 9900



DIMENSIONS AND WEIGHTS

		Manual
Weight	Single (pounds)	1,272
	Double (pounds)	2,335
Overall height, less studs	Single (inches)	10
	Double (inches)	18 1/2
Overall length (inches)		51 3/4
Overall width, less handwheel (inches)		20 1/4
Opening through preventer (inches)		7 1/16
Working pressure (psi)		3,000
Test pressure (psi)		6,000
Handwheel diameter (inches)		20
Ring joint gasket API number		R-45

SUP Exhibit "E"

Sketch of BOP
Marbob Energy Corporation
M. Dodd "B" No. 59 Federal
SE1/4SE1/4 Sec. 14-17S-29E

SUPPLEMENTAL DRILLING DATA

MARBOB ENERGY CORPORATION
WELL #59 M. DODD "B" FEDERAL
SE1/4SE1/4 SEC. 14-17S-29E
EDDY COUNTY, NEW MEXICO
(DEVELOPMENT WELL)

1. SURFACE FORMATION: Quaternary.

2. ESTIMATED TOPS OF GEOLOGIC MARKERS:

Salt	260'	Queen	1815'
Base Salt	780'	Grayburg	2140'
Yates	930'	San Andres	2510'
Seven Rivers	1145'	Glorietta	3900'

3. ANTICIPATED POROSITY ZONES:

Water	Above 180'
Oil	2350 - 5,000'

4. CASING DESIGN:

SIZE	INTERVAL	WEIGHT	GRADE	JOINT	CONDITION
8 5/8"	0-250'	24.0#	K-55	STC	New
5 1/2"	0-5,000'	15.5#	K-55	STC	New

5. SURFACE CONTROL EQUIPMENT: A double ram-type BOP will be used. (See diagram attached as Exhibit "E")

6. CIRCULATING MEDIUM:

0 - 250' Fresh water mud with gel or lime as needed for viscosity control.

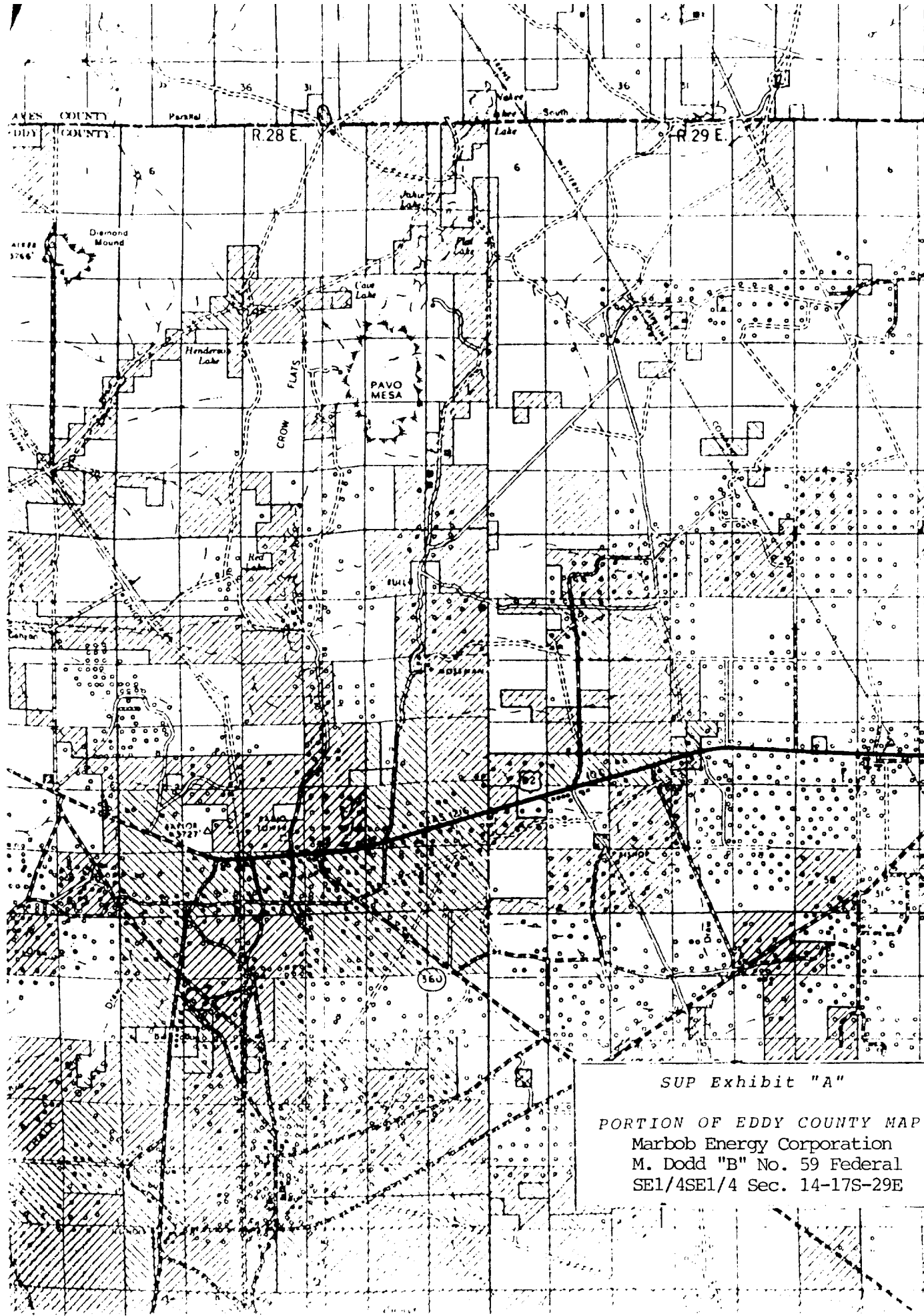
250'- 5,000' Salt water mud, conditioned as necessary for control of viscosity and water loss or gain.

7. AUXILIARY EQUIPMENT: Drill string safety valve.

8. LOGGING PROGRAM: CNL-FDC W/GR Log will be run to TD.

9. ABNORMAL PRESSURES, TEMPERATURES OR GASES: A water flow may be encountered in the salt section.

10. ANTICIPATED STARTING DATE: It is planned that operations will commence about December 15, 1986. Duration of drilling, testing and completion operations should be one to four weeks.



T.15 S

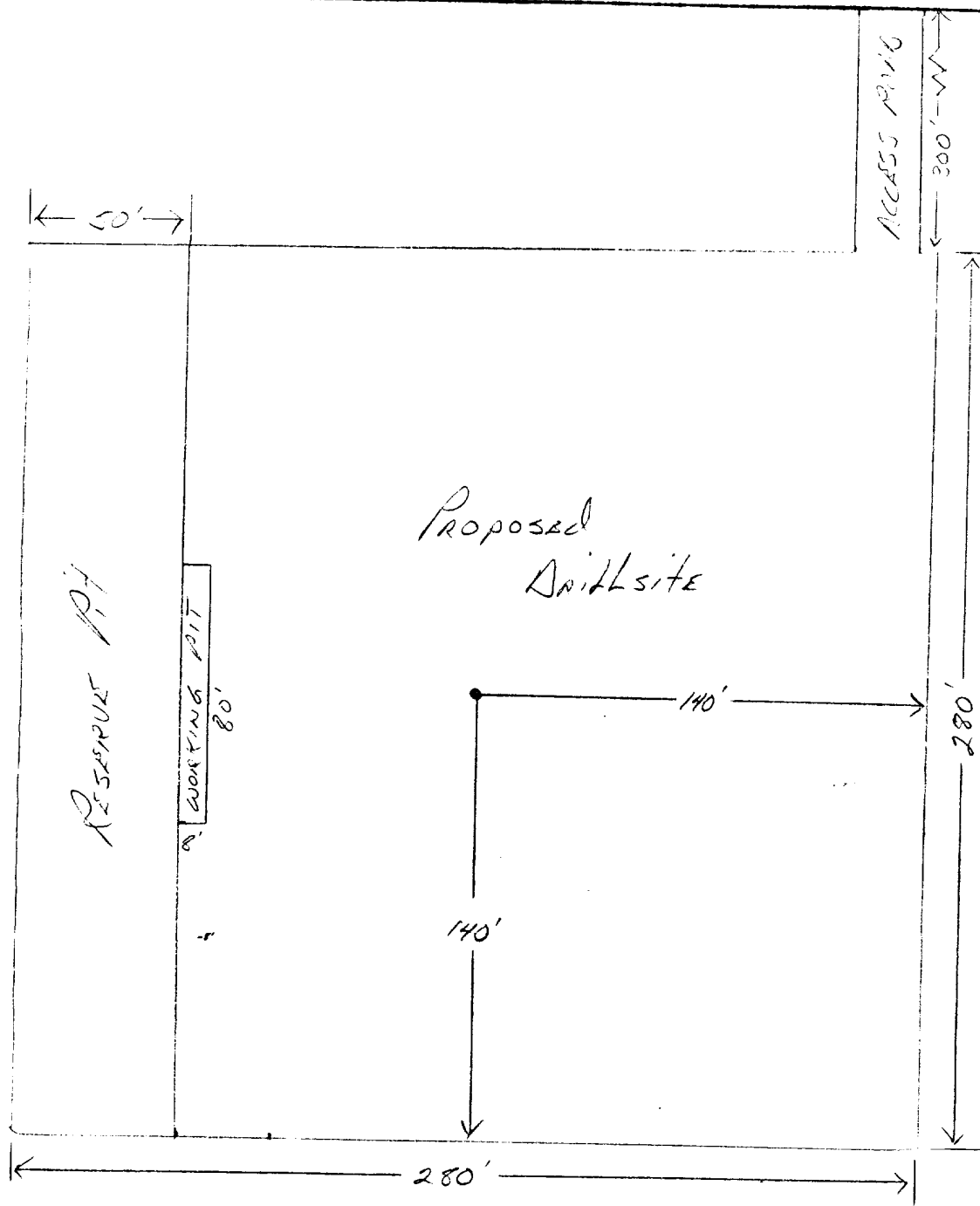
T.16 S

T.17 S

T.18 S

SUP Exhibit "A"

PORTION OF EDDY COUNTY MAP
Marbob Energy Corporation
M. Dodd "B" No. 59 Federal
SE1/4SE1/4 Sec. 14-17S-29E



LEGEND

1" = 20 ft.

SUP Exhibit "D"

SKETCH OF PROPOSED WELL PAD

Marbob Energy Corporation
M. Dodd "B" No. 59 Federal
SE1/4SE1/4 Sec. 14-17S-29E

12-29-87

Dual Spaced Neutron
Casing Log

2454-4533

Lateralog Microguard Log

344-4583

Compensated Spectral
Natural Gamma Log

3500-4530

