

UNITED STATES
DEPARTMENT OF THE INTERIOR
GEOLOGICAL SURVEY

30-015-25705

5. LEASE DESIGNATION AND SERIAL NO.

LC-028731 (B)

6. IF INDIAN, ALLOTTEE OR TRIBE NAME

7. UNIT AGREEMENT NAME

8. FARM OR LEASE NAME

M. Dodd "B"

9. WELL NO.

60

10. FIELD AND POOL, OR WILDCAT

Grbg Jackson SR Q Gb SA

11. SEC., T., R., M., OR BLK.
AND SURVEY OR AREA

Sec. 10-T17S-R29E

12. COUNTY OR PARISH

Eddy

13. STATE

NM

1a. TYPE OF WORK

DRILL ☒

DEEPEN ☐

PLUG BACK ☐

b. TYPE OF WELL

OIL
WELL ☒

GAS
WELL ☐

OTHER

SINGLE
ZONE ☒

MULTIPLE
ZONE ☐

2. NAME OF OPERATOR

Marbob Energy Corporation

3. ADDRESS OF OPERATOR

P.O. Drawer 217, Artesia, NM 88210

4. LOCATION OF WELL (Report location clearly and in accordance with any State requirements)

At surface

1650 FWL 330 FNL

At proposed prod. zone

Same

14. DISTANCE IN MILES AND DIRECTION FROM NEAREST TOWN OR POST OFFICE*

20 air miles east of Artesia, NM 88210

15. DISTANCE FROM PROPOSED*

LOCATION TO NEAREST

PROPERTY OR LEASE LINE, FT.

(Also to nearest drlg. unit line, if any) 330'

18. DISTANCE FROM PROPOSED LOCATION*

TO NEAREST WELL, DRILLING, COMPLETED,

OR APPLIED FOR, ON THIS LEASE, FT. 467'

16. NO. OF ACRES IN LEASE

1480

17. NO. OF ACRES ASSIGNED

TO THIS WELL

40

19. PROPOSED DEPTH

5000'

20. ROTARY OR CABLE TOOLS

Rotary

21. ELEVATIONS (Show whether DF, RT, GR, etc.)

3592.2 GR

22. APPROX. DATE WORK WILL START*

12/15/86

23.

PROPOSED CASING AND CEMENTING PROGRAM

SIZE OF HOLE	SIZE OF CASING	WEIGHT PER FOOT	SETTING DEPTH	QUANTITY OF CEMENT
12 1/4"	8 5/8"	24.0#	350*300	Sufficient to circulate
7 7/8"	5 1/2"	15.5#	5000'	1500 sax, to base of salt

per telecon w/ Denette Wallace 12/9/86
J.M.

Pay zone will be selectively perforated and stimulated as needed for optimum production.

Attached are: 1. Location & acreage dedication plat
2. Supplemental drilling data
3. Surface use plan



IN ABOVE SPACE DESCRIBE PROPOSED PROGRAM: If proposal is to deepen or plug back, give data on present productive zone and proposed new productive zone. If proposal is to drill or deepen directionally, give pertinent data on subsurface locations and measured and true vertical depths. Give blowout preventer program, if any.

24.

SIGNED

Denette Wallace

TITLE

Production Clerk

DATE

12/05/86

(This space for Federal or State office use)

PERMIT NO.

APPROVAL DATE

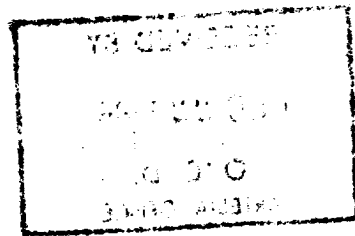
APPROVED BY

TITLE

DATE

12-19-86

CONDITIONS OF APPROVAL, IF ANY:



NEW MEXICO OIL CONSERVATION COMMISSION
WELL LOCATION AND ACREAGE DEDICATION PLAT

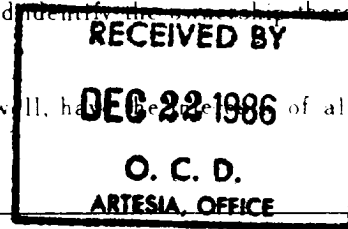
Form O-11
Supersedes O-12K
Effective 1-1-85

All distances must be from the outer boundaries of the Section

Marbob Energy Corporation			Lease M. Dodd "B"		Well No. 60
Section 10	Township 17 South	Range 29 East	County Eddy		
Approximate location of well: 1650 feet from the West line and 330 feet from the North line					
Producing Formations 3592.2	San Andres	Pool Grbg Jackson SR O Gb SA	Estimated Acreage 40		

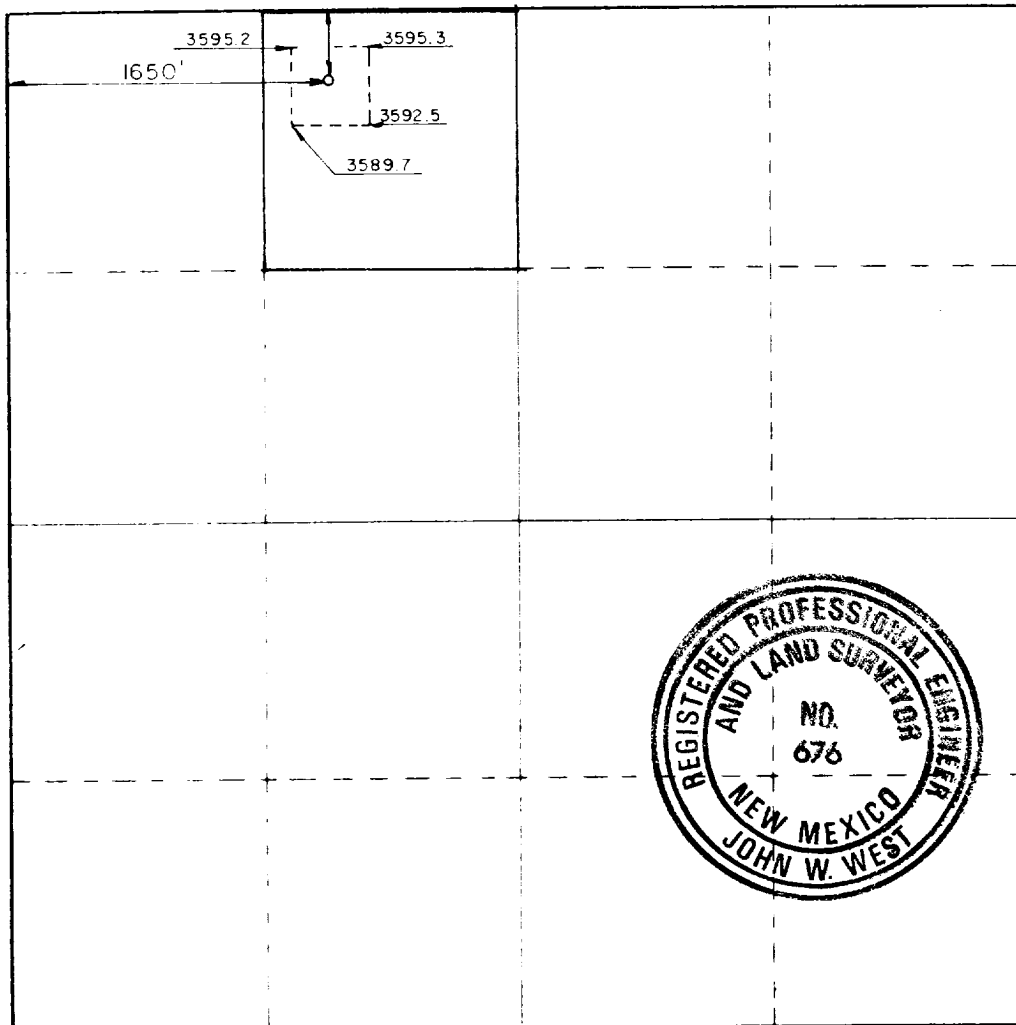
- Outline the acreage dedicated to the subject well by colored pencil or hatchure marks on the plat below.
- If more than one lease is dedicated to the well, outline each and identify the ownership thereof (both as to working interest and royalty).
- If more than one lease of different ownership is dedicated to the well, have the size of all owners been consolidated by communitization, unitization, force-pooling, etc?

Yes ☐ No ☐ If answer is "yes," type of consolidation



If answer is "no," list the owners and tract descriptions which have actually been consolidated (Use reverse side of this form if necessary.)

No allowable will be assigned to the well until all interests have been consolidated (by communitization, unitization, forced-pooling, or otherwise) or until a non-standard unit, eliminating such interests, has been approved by the Commission.



CERTIFICATION

I hereby certify that the information contained herein is true and complete to the best of my knowledge and belief.

DeNette Wallace

DeNette Wallace

Production Clerk

Marbob Energy Corporation

12/05/86

I hereby certify that the well location shown on this plat was plotted from field notes of actual surveys made by me or under my supervision, and that the same is true and correct to the best of my knowledge and belief.

Date Surveyed

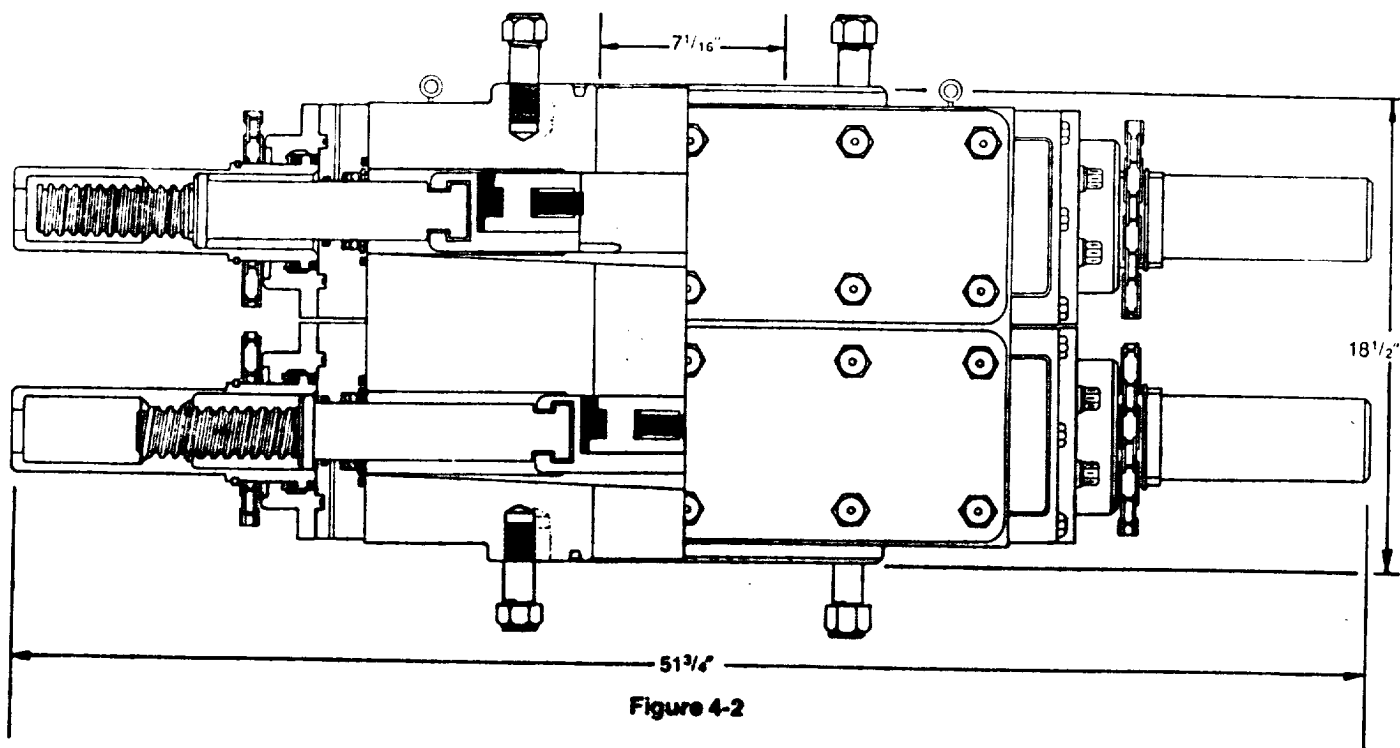
December 3, 1986

Registered Professional Engineer and/or Land Surveyor

John W. West

Certificate No. JOHN W. WEST, 676
RONALD J. EIDSON, 3239

330 660 990 1320 1650 1980 2310 2640 2000 1500 1000 500 0



DIMENSIONS AND WEIGHTS

		Manual
Weight	Single (pounds)	1,272
	Double (pounds)	2,335
Overall height, less studs	Single (inches)	10
	Double (inches)	18 1/2
Overall length (inches)		51 3/4
Overall width, less handwheel (inches)		20 1/4
Opening through preventer (inches)		7 1/16
Working pressure (psi)		3,000
Test pressure (psi)		6,000
Handwheel diameter (inches)		20
Ring joint gasket API number		R-45

SUP Exhibit "E"

Sketch of BOP
Marlob Energy Corporation
M. Todd "B" No. 60 Federal
NE1/4NW1/4 Sec. 10-17S-29E

SUPPLEMENTAL DRILLING DATA

MARBOB ENERGY CORPORATION
WELL #60 M. DODD "B" FEDERAL
NE1/4NW1/4 SEC. 10-17S-29E
EDDY COUNTY, NEW MEXICO
(DEVELOPMENT WELL)

1. SURFACE FORMATION: Quaternary.

2. ESTIMATED TOPS OF GEOLOGIC MARKERS:

Salt	360'	Queen	1815'
Base Salt	780'	Grayburg	2140'
Yates	930'	San Andres	2510'
Seven Rivers	1145'	Glorietta	3900'

3. ANTICIPATED POROSITY ZONES:

Water	Above 180'
Oil	2350 - 5,000'

4. CASING DESIGN:

SIZE	INTERVAL	WEIGHT	GRADE	JOINT	CONDITION
8 5/8"	0-350'	24.0#	K-55	STC	New
5 1/2"	0-5,000'	15.5#	K-55	STC	New

5. SURFACE CONTROL EQUIPMENT: A double ram-type BOP will be used. (See diagram attached as Exhibit "E")

6. CIRCULATING MEDIUM:

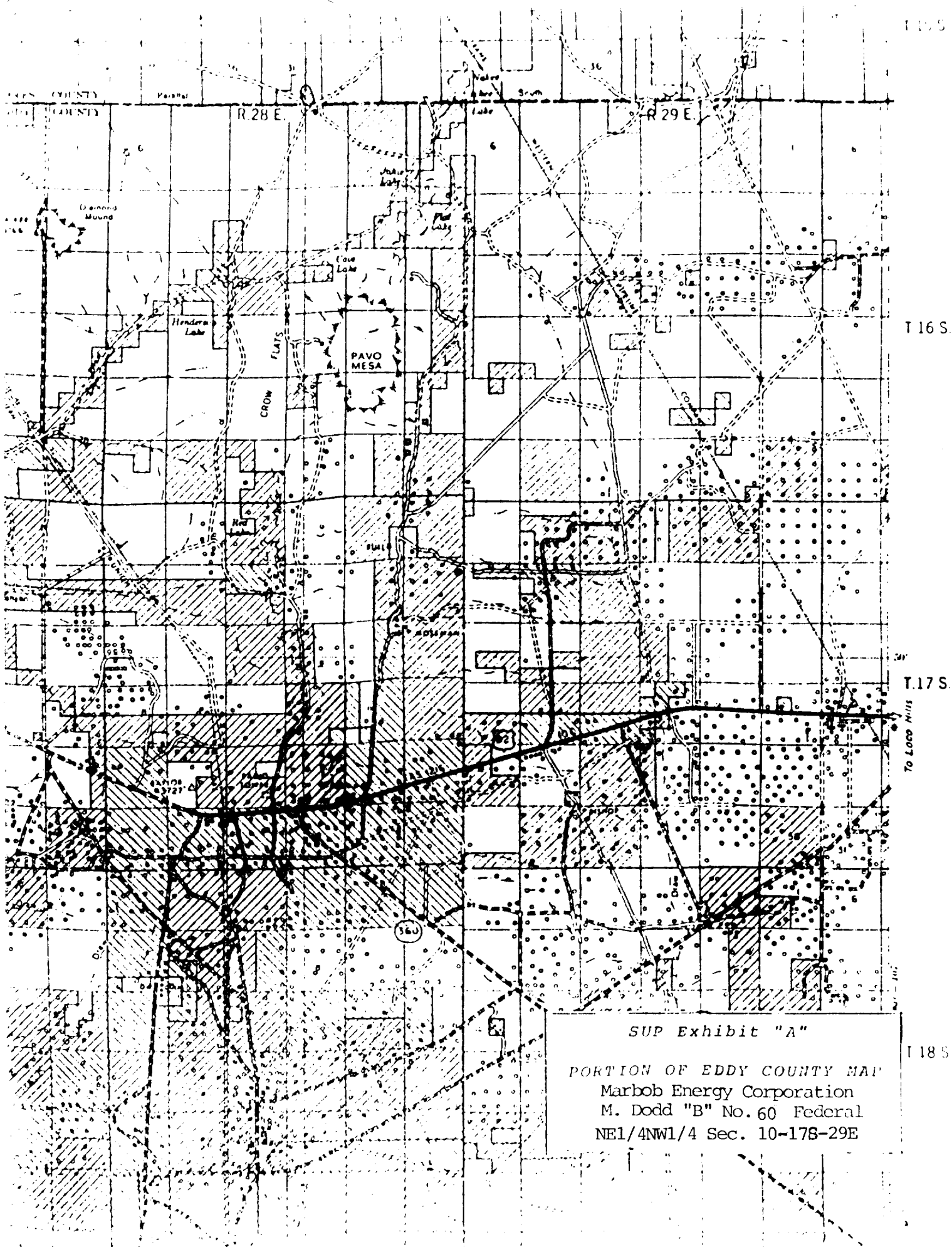
0 - 350'	Fresh water mud with gel or lime as needed for viscosity control.
350' - 5,000'	Salt water mud, conditioned as necessary for control of viscosity and water loss or gain.

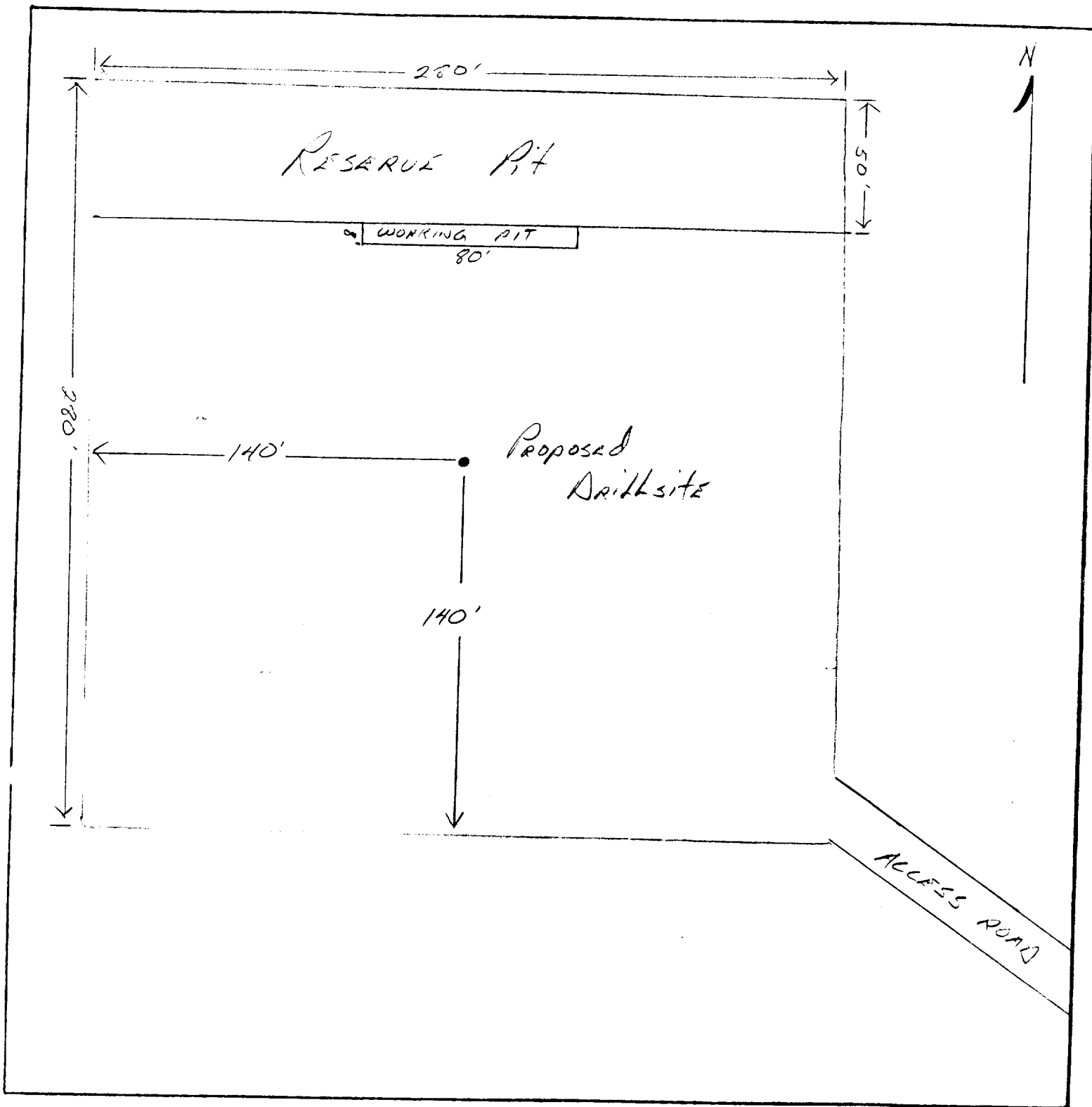
7. AUXILIARY EQUIPMENT: Drill string safety valve.

8. LOGGING PROGRAM: CNL-FDC W/GR Log will be run to TD.

9. ABNORMAL PRESSURES, TEMPERATURES OR GASES: A water flow may be encountered in the salt section.

10. ANTICIPATED STARTING DATE: It is planned that operations will commence about December 15, 1986. Duration of drilling, testing and completion operations should be one to four weeks.





LEGEND

1 cm = 20 ft.

SUP Exhibit "D"

SKETCH OF PROPOSED WELL PAD

Marbob Energy Corporation
M. Dodd "B" No. 60 Federal
NE1/4NW1/4 Sec. 10-17S-29E