

Form 3160-3
(November 1983)
(formerly 9-331C)

THE OLD CONS. COMMISSION

Driller ID

Artesia, NM 88210

SUBMIT IN PLICATE
(Other instructions on
reverse side)

30-015-25712
Form approved.
Budget Bureau No. 1004-0136
Expires August 31, 1985
C/SF

UNITED STATES
DEPARTMENT OF THE INTERIOR
BUREAU OF LAND MANAGEMENT

APPLICATION FOR PERMIT TO DRILL, DEEPEN, OR PLUG BACK

1A. TYPE OF WORK

DRILL ☒

DEEPEN ☐

PLUG BACK ☐

B. TYPE OF WELL

OIL WELL ☒

GAS WELL ☐

OTHER

SINGLE ZONE ☒

MULTIPLE ZONE ☐

2. NAME OF OPERATOR

Phillips Petroleum Company

3. ADDRESS OF OPERATOR

Room 401, 4001 Penbrook St. Odessa, Texas

4. LOCATION OF WELL (Report location clearly and in accordance with any State requirements.)

At surface Unit I, 2080' FSL & 760' FEL

At proposed prod. zone Unit I, 2080 FSL & 760' FEL

14. DISTANCE IN MILES AND DIRECTION FROM NEAREST TOWN OR POST OFFICE*

1 mile South and West of Loco Hills, NM

10. DISTANCE FROM PROPOSED*

LOCATION TO NEAREST
PROPERTY OR LEASE LINE, FT.
(Also to nearest drig. unit line, if any)

760'

16. NO. OF ACRES IN LEASE

1115.20

17. NO. OF ACRES ASSIGNED
TO THIS WELL

40

18. DISTANCE FROM PROPOSED LOCATION*
TO NEAREST WELL, DRILLING, COMPLETED,
OR APPLIED FOR, ON THIS LEASE, FT.

1220' North
to #26

19. PROPOSED DEPTH

3500

20. ROTARY OR CABLE TOOLS

Rotary

21. ELEVATIONS (Show whether DF, RT, GR, etc.)

GL 3589.2 (Unprepared)

22. APPROX. DATE WORK WILL START*

Upon approval

23.

PROPOSED CASING AND CEMENTING PROGRAM

SIZE OF HOLE	SIZE OF CASING	WEIGHT PER FOOT	SETTING DEPTH	QUANTITY OF CEMENT
12-1/4"	8-5/8"	24#	350	400 sk Circ. to surface using caliper
7-7/8"	5-1/2"	17#	3500	vol. plus 30% excess (*2)

(*1) Circ. to Surface

(*2) Lead: 800 sk Class C + 10% Diacel D + 9#/sk salt
Tail: 500 sk Class C + 5#/sk salt

IN ABOVE SPACE DESCRIBE PROPOSED PROGRAM: If proposal is to deepen or plug back, give data on present productive zone and proposed new productive zone. If proposal is to drill or deepen directionally, give pertinent data on subsurface locations and measured and true vertical depths. Give blowout preventer program, if any.

24.

SIGNED

W.D. Mueller

TITLE

Eng. Supervisor, Reservoir

DATE

12/18/86

(This space for Federal or State office use)

PERMIT NO.

Orig: 854, Charles S. Dahlen

APPROVAL DATE

APPROVED BY

Area Manager

TITLE

DATE

12-31-86

CONDITIONS OF APPROVAL, IF ANY:

APPROVAL SUBJECT TO
GENERAL REQUIREMENTS AND
SPECIAL STIPULATIONS

*See Instructions On Reverse Side

Title 18 U.S.C. Section 1001, makes it a crime for any person knowingly and willfully to make any false, fictitious or fraudulent statements or representations as to any matter within its jurisdiction.

NEW MEXICO OIL CONSERVATION COMMISSION
WELL LOCATION AND ACREAGE DEDICATION PLAT

Form C-102
Supersedes C-128
Effective 1-4-65

All distances must be from the outer boundaries of the Section.

Operator Phillips Petroleum Co. ✓		Lessee Burch - C Federal		Well No. 46
Unit Letter 1	Section 30	Township 17-S	Range 30-E	County Eddy
Actual Footage Location of Well: 2080 feet from the South line and 760 feet from the East line				
Ground Level Elev. 3589.2	Producing Formation San Andres	Pool Grayburg-Jackson-7R-Q-G-SA	Dedicated Acreage: 40 Acres	

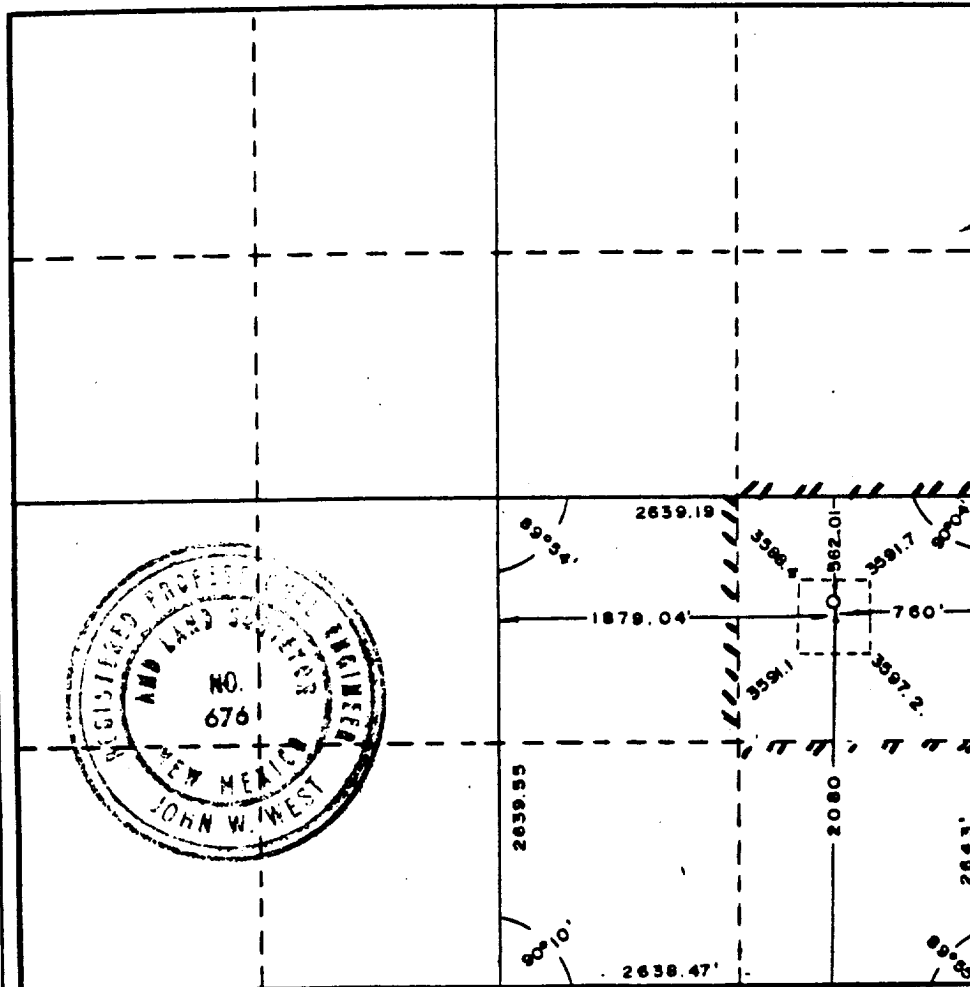
1. Outline the acreage dedicated to the subject well by colored pencil or hatchure marks on the plat below.
2. If more than one lease is dedicated to the well, outline each and identify the ownership thereof (both as to working interest and royalty).
3. If more than one lease of different ownership is dedicated to the well, have the interests of all owners been consolidated by communitization, unitization, force-pooling, etc?

☐ Yes ☐ No If answer is "yes," type of consolidation _____

If answer is "no," list the owners and tract descriptions which have actually been consolidated. (Use reverse side of this form if necessary.) _____

No allowable will be assigned to the well until all interests have been consolidated (by communitization, unitization, forced-pooling, or otherwise) or until a non-standard unit, eliminating such interests, has been approved by the Commission.

RECEIVED BY
JAN - 2 1987
O. C. D.
ARTESIA, OFFICE



CERTIFICATION

I hereby certify that the information contained herein is true and complete to the best of my knowledge and belief.

Name
W. O. Mueller

Position
Eng. Supervisor, Reservoir

Company
Phillips Petroleum Company

Date
December 18, 1986

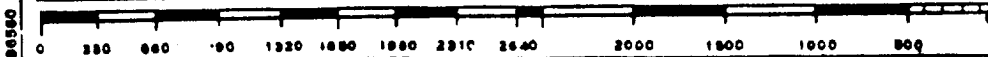
I hereby certify that the well location shown on this plat was plotted from field notes of actual surveys made by me or under my supervision, and that the same is true and correct to the best of my knowledge and belief.

Date Surveyed
Dec 5, 1986

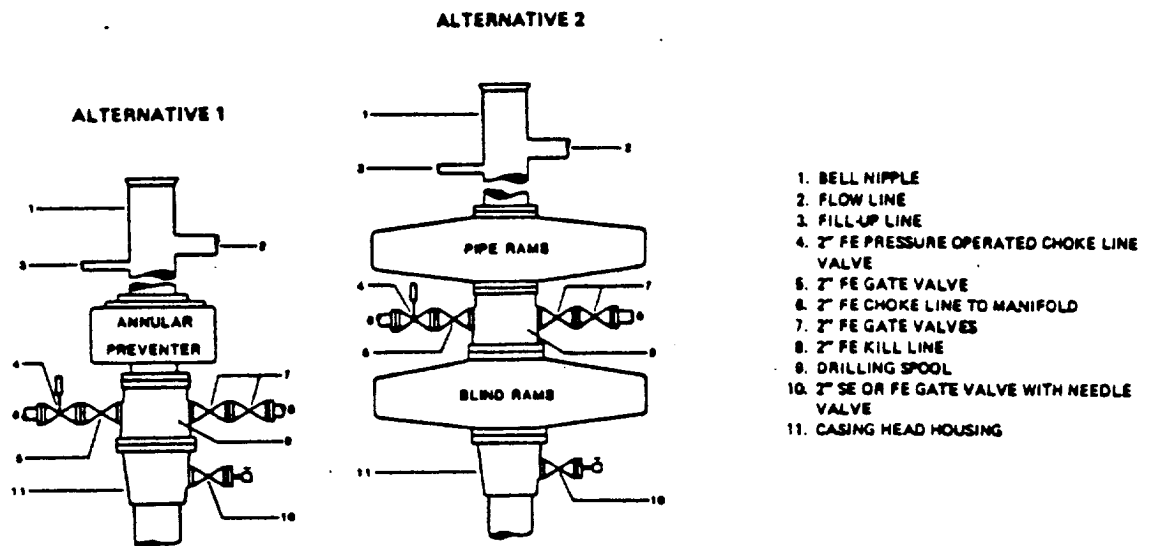
Registered Professional Engineer and/or Land Surveyor

John W. West

Certificate No. **JOHN W. WEST, 676**
RONALD J. EIDSON, 3239



FIELD PRACTICES AND STANDARDS



NOTE: THE DRILLING SPOOL MAY BE LOCATED BELOW BOTH SETS OF RAMS IF A DOUBLE PREVENTER IS USED AND IT DOES NOT HAVE SUITABLE OUTLETS BETWEEN RAMS

Figure 7-9. Standard Hydraulic Blowout Preventer Assembly
(2 M or 3 M Working Pressure) Alternative 1

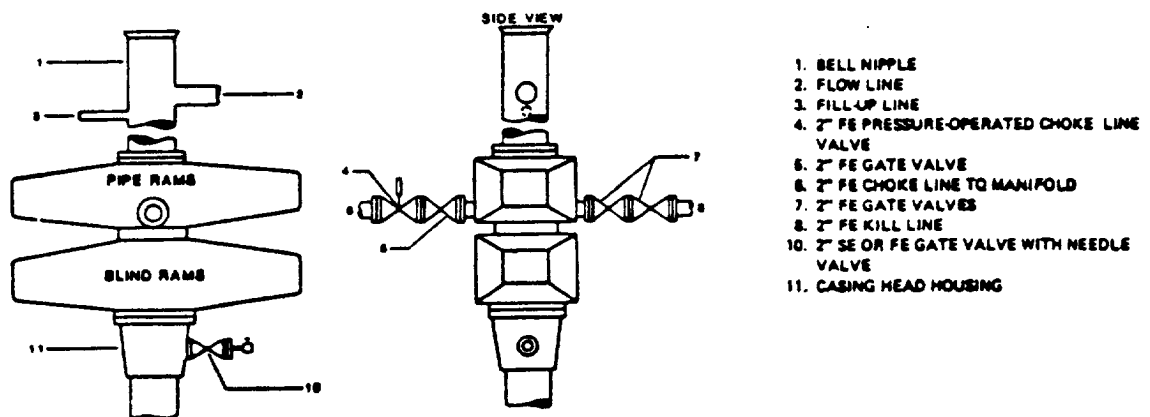


Figure 7-10. Standard Hydraulic Blowout Preventer Assembly
(2 M or 3 M Working Pressure) Alternative 3 (without Drilling Spool)



PHILLIPS PETROLEUM COMPANY

Burch-C Fed Well No. 46, Federal Lease No. LC-028793-C

DRILLING PROGNOSIS

1. Location of Proposed Well: 2080' FSL and 760' FEL of Sec. 30, T-17-S,
R-30-E, Eddy County, NM
2. Unprepared Ground Elevation: 3589.2'
3. The geologic name of the surface formation is Typic Torripsammit
Subgroup/ Kermit Berino Series
4. Type of drilling tools will be rotary
5. Proposed drilling depth is 3500'
6. The estimated tops of important geologic markers are as follows:

Tertiary	- surface	Yates	- 1190'
Rustler	- 250'	Queen	- 2208'
Salt	- 540'	Grayburg	- 2575'
Tansill	- 1075'	San Andres	- 3040'

7. The estimated depths at which anticipated water, oil, gas, or other mineral bearing formations are expected to be encountered are as follows:

Water:	Fresh water	- None
	Salt water	- 2208'
Grayburg & San Andres	2575 - 3100	

8. The proposed casing program is as follows:

Surface String 8-5/8" 24#/ft, K-55, ST&C set @ 350'
Production String 5-1/2, 17#/ft., K-55, ST&C set @ 3500'

9. Cement Program:

Surface String = Circulate to surface with 400 sacks Class C +
2% CaCl₂. (Slurry weight 14.8 ppg, slurry yield 1.32 cu ft/sk,
6.3 gals. wtr./sk). WOC 18 hrs. Test csg. to 1000 psi for 30
min.

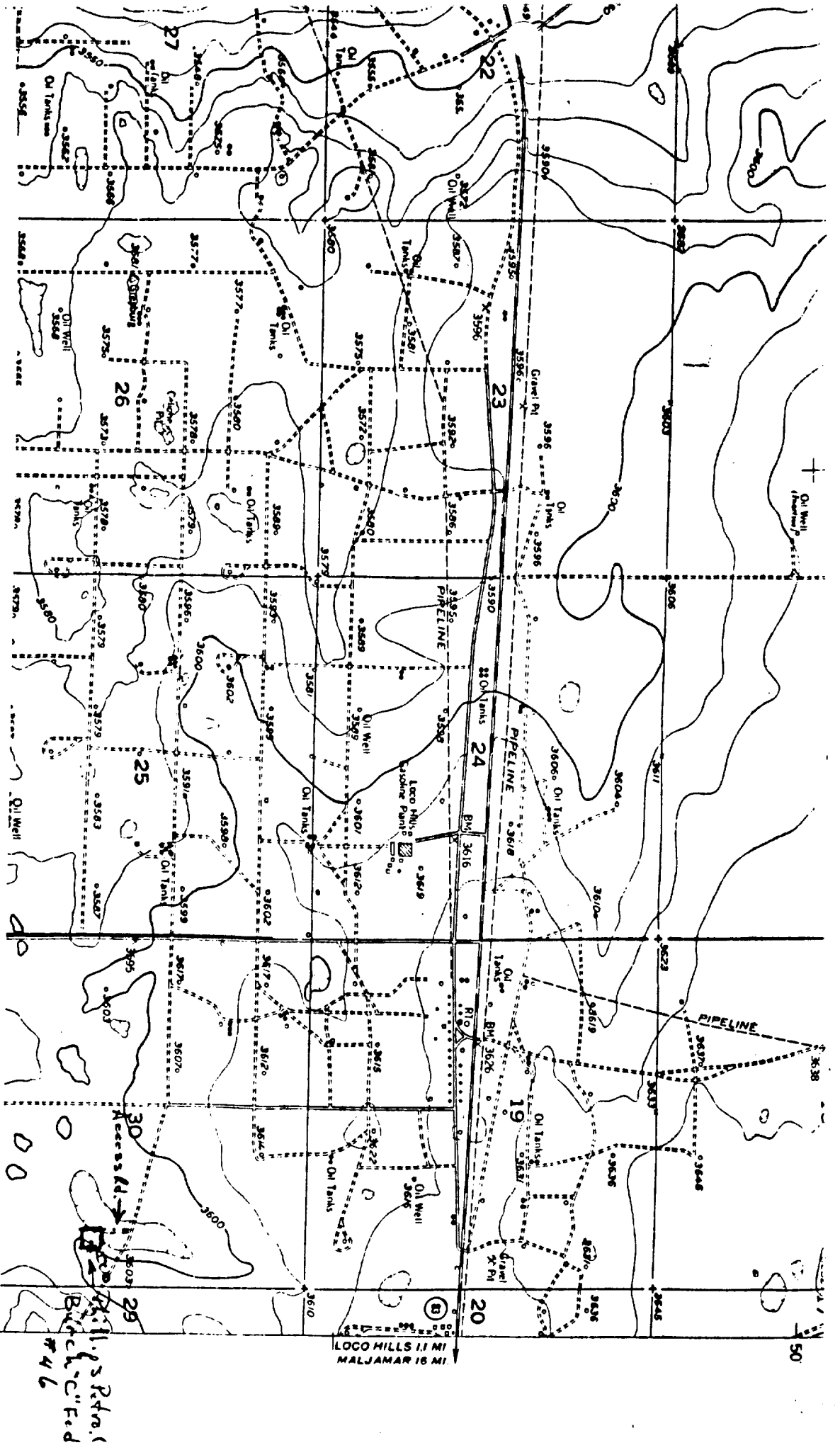
Production String = Circulate to surface using caliper volume
plus 30% excess.

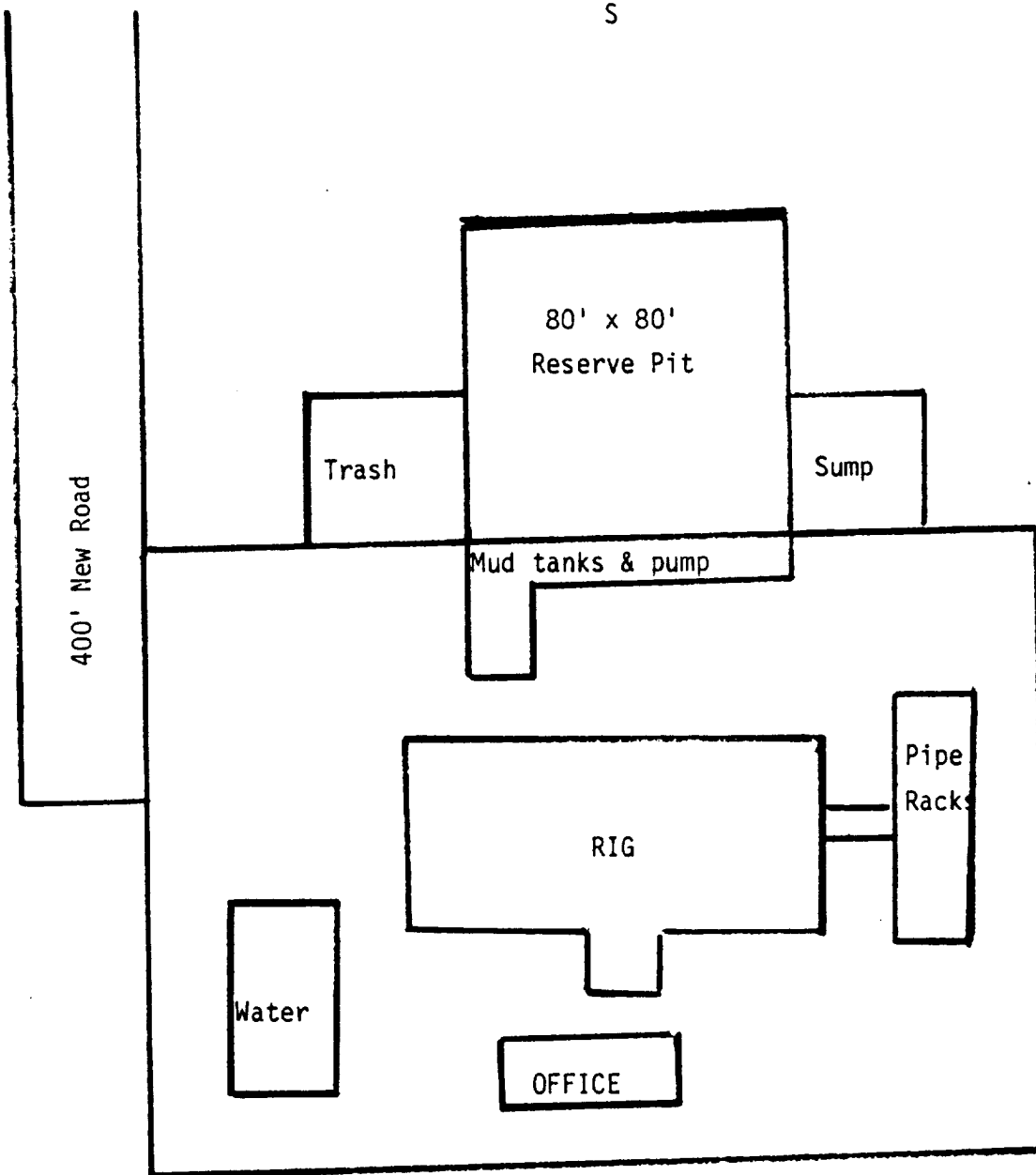
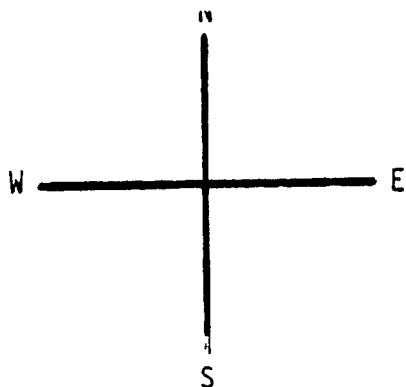
Lead: 800 sk Class C + 10% Diacei D + 9#/sk salt. (Slurry weight
13.2 ppg, slurry yield 2.07 cu ft/sk, 11.0 gal. wtr./sk.)

Tail: 500 sk Class C + 5#/sk salt (slurry weight 15.0 ppg,
15.0 ppg, slurry yield 1.35 cu ft/sk, 6.3 gal. wtr./sk)

Desired TOC 2300'. If water flow is encountered while drilling,
perform job at max. rate and then SI BOP 4 hrs.

Fig. 2. USGS RED LAKE SE QUADRANGLE, 7.5 Minute Series, 1:24,000, showing PHILLIPS PETROLEUM COMPANY's proposed Burch "C" Federal Well No. 46, 760 FSL, 2080 FSL, and access road, Section 30, T17S, R30E, NMPM, Eddy County, New Mexico.





250' x 250'

BURCH-C FED WELL NO. 46