

UNITED STATES
DEPARTMENT OF THE INTERIOR
BUREAU OF LAND MANAGEMENT

SUBMIT IN DUPLICATE*
(Other instructions on
reverse side)

Form approved.
Budget Bureau No. 1004-0136
Expires August 31, 1985

APPLICATION FOR PERMIT TO DRILL, DEEPEN, OR PLUG BACK

1A. TYPE OF WORK

DRILL ☒

DEEPEN ☐

PLUG BACK ☐

B. TYPE OF WELL

OIL
WELL ☒

GAS
WELL ☐

OTHER

2. NAME OF OPERATOR

Phillips Petroleum Company (915) 367-1484

3. ADDRESS OF OPERATOR

Room 401, 4001 Penbrook St., Odessa, Texas 79762

4. LOCATION OF WELL (Report location clearly and in accordance with any State requirements.)

At surface

Unit J, 1980' FSL & 2080 FEL

At proposed prod. zone

Unit J, 1980' FSL & 2080 FEL

14. DISTANCE IN MILES AND DIRECTION FROM NEAREST TOWN OR POST OFFICE*

3 miles South & West of Loco Hills, NM

15. DISTANCE FROM PROPOSED*
LOCATION TO NEAREST
PROPERTY OR LEASE LINE, FT.
(Also to nearest drig. unit line, if any)

1980'

18. DISTANCE FROM PROPOSED LOCATION*
TO NEAREST WELL, DRILLING, COMPLETED,
OR APPLIED FOR, ON THIS LEASE, FT.

822.5' NW to #21

16. NO. OF ACRES IN LEASE
480

19. PROPOSED DEPTH

3500'

17. NO. OF ACRES ASSIGNED
TO THIS WELL 40

20. ROTARY OR CABLE TOOLS

Rotary

21. ELEVATIONS (Show whether DF, RT, GR, etc.)

GL 3570.3' Unprepared

22. APPROX. DATE WORK WILL START*

Upon approval

23.

PROPOSED CASING AND CEMENTING PROGRAM

SIZE OF HOLE	SIZE OF CASING	WEIGHT PER FOOT	SETTING DEPTH	QUANTITY OF CEMENT
12-1/4"	8-5/8"	24#	350'	40 CIRCULATE C + 2% CaCl ₂ (*1)
7-7/8"	5-1/2"	17#	3500'	Ca CIRCULATE + 30% (*2)

(*1) Circulated to Surface

(*2) Circulated to Surface

Lead: 800 sk Class C + 10% Diacel D + 9#/sk salt
Tail: 500 sk Class C + 5#/sk salt

The only other well located within this quarter/quarter section is the Keely-B Fed well no. 21 which is operated by Phillips Petroleum Company

Posted ID-1
NL, API
1-9-87

IN ABOVE SPACE DESCRIBE PROPOSED PROGRAM: If proposal is to deepen or plug back, give data on present productive zone and proposed new productive zone. If proposal is to drill or deepen directionally, give pertinent data on subsurface locations and measured and true vertical depths. Give blowout preventer program, if any.

24.

SIGNED

W.J. Mueller

TITLE

Eng. Supervisor, Reservoir

DATE

12/18/86

(This space for Federal or State office use)

PERMIT NO.

APPROVAL DATE

APPROVED BY

Charles S. Dutton

TITLE

DATE

12-31-86

CONDITIONS OF APPROVAL, IF ANY:

APPROVAL SUBJECT TO
GENERAL REQUIREMENTS AND
SPECIAL STIPULATIONS

*See Instructions On Reverse Side

ATTACHED

I hereby agree knowingly and willfully to make to any department or agency of the

**NEW MEXICO OIL CONSERVATION COMMISSION
WELL LOCATION AND ACREAGE DEDICATION PLAT**

Form C-102
Supersedes C-128
Effective 1-1-65

All distances must be from the outer boundaries of the Section

Operator PHILLIPS PETROLEUM COMPANY			Lease Keely B - Federal		Well No. 27
Unit Letter J	Section 26	Township 17 South	Range 29 East	County Eddy	
Actual Footage Location of Well: <div style="display: flex; justify-content: space-between;"> 1980 feet from the south line and 2080 feet from the east line </div>					
Ground Level Elev. 3570.3	Producing Formation San Andres	Pool Grayburg-Jackson-7R-Q-G-SA		Dedicated Acreage: 40 Acres	

1. Outline the acreage dedicated to the subject well by colored pencil or hachure marks on the plat below.

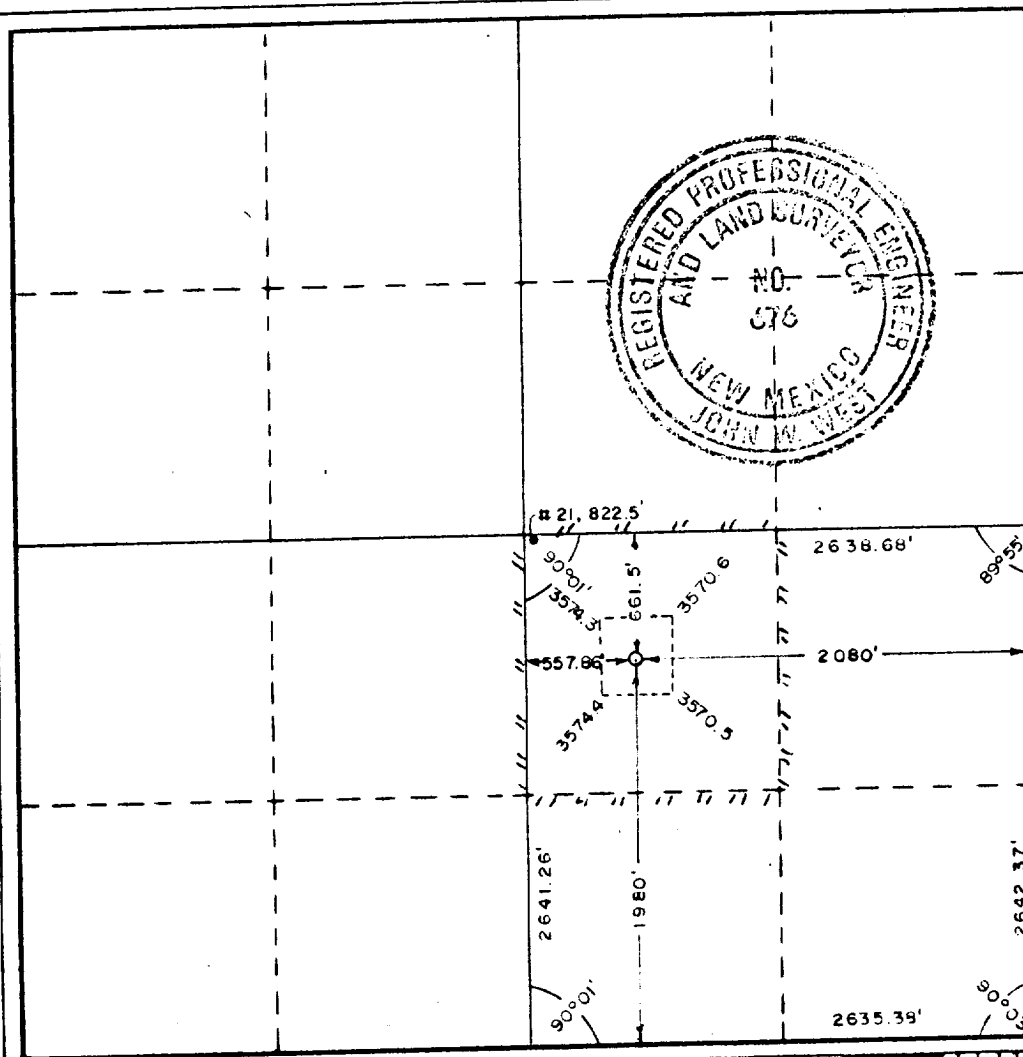
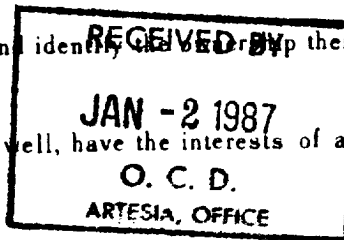
2. If more than one lease is dedicated to the well, outline each and identify the lease or leases thereof (both as to working interest and royalty).

3. If more than one lease of different ownership is dedicated to the well, have the interests of all owners been consolidated by communitization, unitization, force-pooling, etc?

☐ Yes ☐ No If answer is "yes," type of consolidation _____

If answer is "no," list the owners and tract descriptions which have actually been consolidated. (Use reverse side of this form if necessary.) _____

No allowable will be assigned to the well until all interests have been consolidated (by communitization, unitization, forced-pooling, or otherwise) or until a non-standard unit, eliminating such interests, has been approved by the Commission.



CERTIFICATION

I hereby certify that the information contained herein is true and complete to the best of my knowledge and belief.

Name
W. J. Mueller

Position
Eng. Supervisor, Reservoir

Company
Phillips Petroleum Company

Date
12/18/86

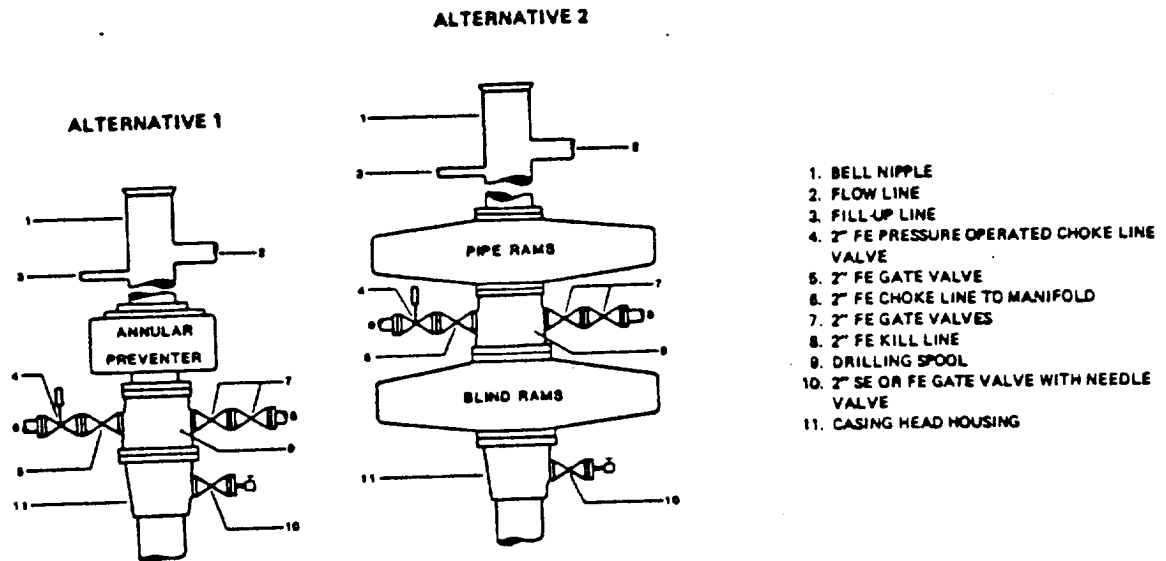
I hereby certify that the well location shown on this plat was plotted from field notes of actual surveys made by me or under my supervision, and that the same is true and correct to the best of my knowledge and belief.

Date Surveyed
12/05/86

Registered Professional Engineer and/or Land Surveyor

John W. West
Certificate No. **JOHN W. WEST, 676**
RONALD J. EIDSON, 3239

FIELD PRACTICES AND STANDARDS



NOTE: THE DRILLING SPOOL MAY BE LOCATED BELOW BOTH SETS OF RAMS IF A DOUBLE PREVENTER IS USED AND IT DOES NOT HAVE SUITABLE OUTLETS BETWEEN RAMS

Figure 7-9. Standard Hydraulic Blowout Preventer Assembly (2 M or 3 M Working Pressure) Alternative 1

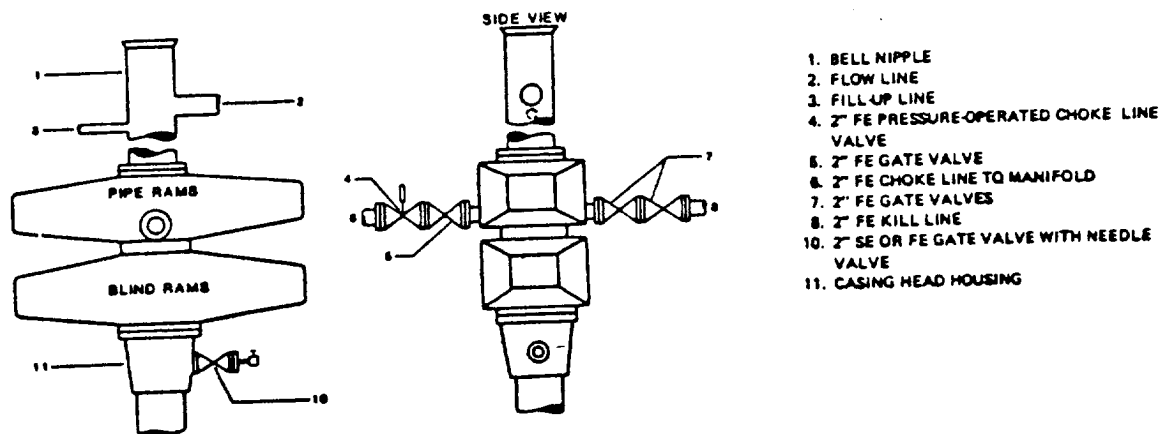


Figure 7-10. Standard Hydraulic Blowout Preventer Assembly (2 M or 3 M Working Pressure) Alternative 3 (without Drilling Spool)

PHILLIPS PETROLEUM COMPANY

Keely-B Fed, Well No. 27, Fed Lease No. LC-028784-B

DRILLING PROGNOSIS

1. Location of Proposed Well: 1980' FSL & 2080' FEL of Sec. 26,
T-17-S, R-29-E, Eddy County, New Mexico
2. Unprepared Ground Elevation: 3570.3.
3. The geologic name of the surface formation is Typic torripsamment
Subgroup/Kermit Berino Series.
4. Type of drilling tools will be rotary.
5. Proposed drilling depth is 3500'.
6. The estimated tops of important geologic markers are as follows:

<u>Tertiary Surface</u>	<u>Yates 1050'</u>
<u>Rustler 100'</u>	<u>Queen 1900'</u>
<u>Salt 320'</u>	<u>Grayburg 2255'</u>
<u>Tansill 930'</u>	<u>San Andres 2678'</u>

7. The estimated depths at which anticipated water, oil, gas, or other mineral bearing formations are expected to be encountered are as follows:

Water: Fresh water - None
Salt Water - 1900'
Grayburg-San Andres 2255'-2700'

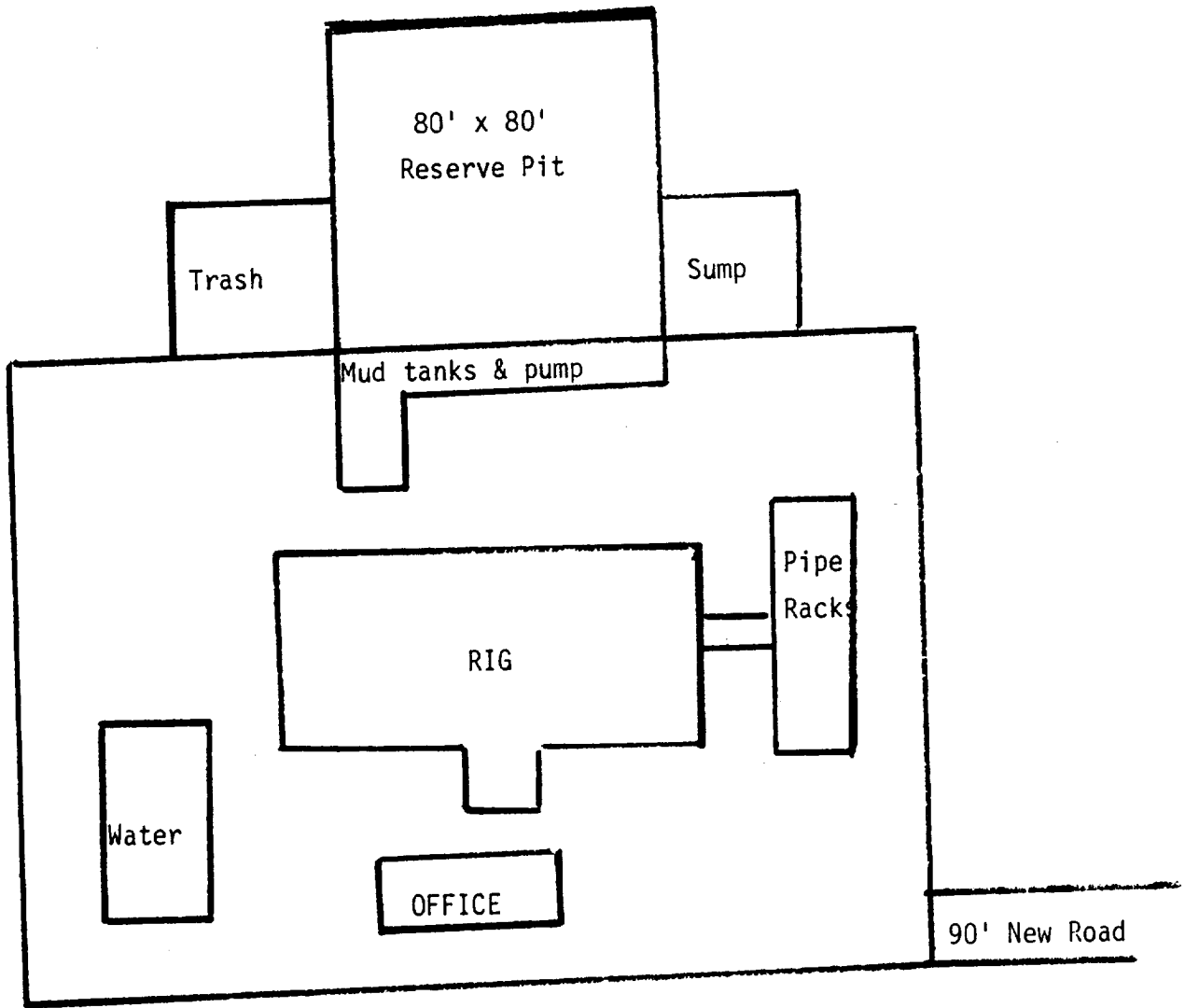
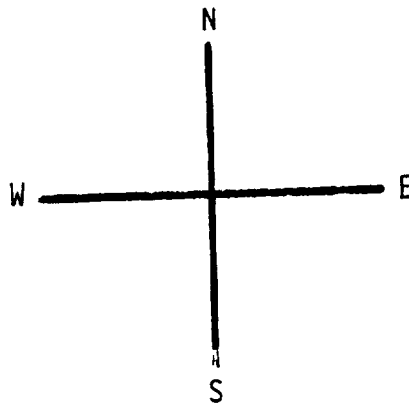
8. The proposed casing program is as follows:

Surface String 8 5/8", 24#/ft, K-55, ST&C set @ 350'
Production String 5 1/2", 17#/ft, K-55, ST&C set @ 3500'

9. Cement Program:

Surface String = Circulate to surface with 400 sk Class C +
2% CaCl₂. WOC 18 hrs. Test csq. to 1000 psi for 30 min.

Production String = Circulate to surface using Caliper volume plus
30% excess. Lead: 800 sk Class C + 10% Diacel D + 9#/sk salt
(Slurry weight 13.2 ppg, Slurry yield 2.07 cu ft/sk, 11.0 gal wtr/sk.)
Tail: 500 sk Class C + 5#/sk salt. (Slurry weight 15.0
ppg, Slurry yield 1.35 cu ft/sk, 6.3 gal wtr/sk.) Desired TOC
2300'. If water flow is encountered while drilling, perform job
at max. rate and then SI BOP 4 hrs.



250' X 250'

Keely-C Fed Well No. 27