

UNITED STATES
DEPARTMENT OF THE INTERIOR
BUREAU OF LAND MANAGEMENT

SUBMIT IN
(Other instructions on
reverse side)

30-015-2574
Form approved.
Budget Bureau No. 1004-0136
Expires August 31, 1985

APPLICATION FOR PERMIT TO DRILL, DEEPEN, OR PLUG BACK

1a. TYPE OF WORK

DRILL ☒

DEEPEN ☐

PLUG BACK ☐

b. TYPE OF WELL

OIL
WELL ☒

GAS
WELL ☐

OTHER ☐

SINGLE
ZONE ☒

MULTIPLE
ZONE ☐

2. NAME OF OPERATOR

Phillips Petroleum Company

3. ADDRESS OF OPERATOR

Room 401, 4001 Penbrook St. Odessa, TX

4. LOCATION OF WELL (Report location clearly and in accordance with any State requirements.)

At surface Unit J, 1331' FSL & 1331' FEL

At proposed prod. zone Unit J, 1331' FSL & 1331' FEL

14. DISTANCE IN MILES AND DIRECTION FROM NEAREST TOWN OR POST OFFICE*

3 miles South & West of Loco Hills, NM

15. DISTANCE FROM PROPOSED*

LOCATION TO NEAREST
PROPERTY OR LEASE LINE, FT.
(Also to nearest drlg. unit line, if any)

1331' FSL

18. DISTANCE FROM PROPOSED LOCATION*

TO NEAREST WELL, DRILLING, COMPLETED,
OR APPLIED FOR, ON THIS LEASE, FT. 910.3' NW to #19

16. NO. OF ACRES IN LEASE

1440

19. PROPOSED DEPTH

3500

17. NO. OF ACRES ASSIGNED
TO THIS WELL

40

20. ROTARY OR CABLE TOOLS

Rotary

21. ELEVATIONS (Show whether DF, RT, GR, etc.)

3583.0 GL (Unprepared)

22. APPROX. DATE WORK WILL START*

Upon approval

23.

PROPOSED CASING AND CEMENTING PROGRAM

SIZE OF HOLE	SIZE OF CASING	WEIGHT PER FOOT	SETTING DEPTH	QUANTITY OF CEMENT
12-1/4"	8-5/8"	24#	350'	400 sk Class C + 2% CaCl ₂ (*1)
7-7/8"	5-1/2"	17#	3500'	Circ. to surface using caliper vol. + 30% excess (*2)

(*1) Circ. to surface

(*2) Lead: 800 sk Class C + 10% Diacel D + 9#/sk salt
Tail: 500 sk Class C + 5#/sk salt

This proposed location shares the proration unit with Keely-C Fed well no. 19
which is operated by Phillips Petroleum Company.

Posted ID-1
NL, API
1-9-87

IN ABOVE SPACE DESCRIBE PROPOSED PROGRAM: If proposal is to deepen or plug back, give data on present productive zone and proposed new productive zone. If proposal is to drill or deepen directionally, give pertinent data on subsurface locations and measured and true vertical depths. Give blowout preventer program if any.

24.

SIGNED

[Signature]

TITLE

Eng. Supervisor, Reservoir

DATE 12/18/86

(This space for Federal or State office use)

PERMIT NO.

Original: Charles S. Doherty

APPROVAL DATE

APPROVED BY

Area Manager

TITLE

DATE

12.31.86

CONDITIONS OF APPROVAL, IF ANY:

Subject to
Like Approval
by State

*See Instructions On Reverse Side

APPROVAL SUBJECT TO
GENERAL REQUIREMENTS AND
SPECIAL STIPULATIONS

ATTACHED

**NEW MEXICO OIL CONSERVATION COMMISSION
WELL LOCATION AND ACREAGE DEDICATION PLAT**

Form C-102
Supersedes C-128
Effective 1-1-65

All distances must be from the outer boundaries of the Section

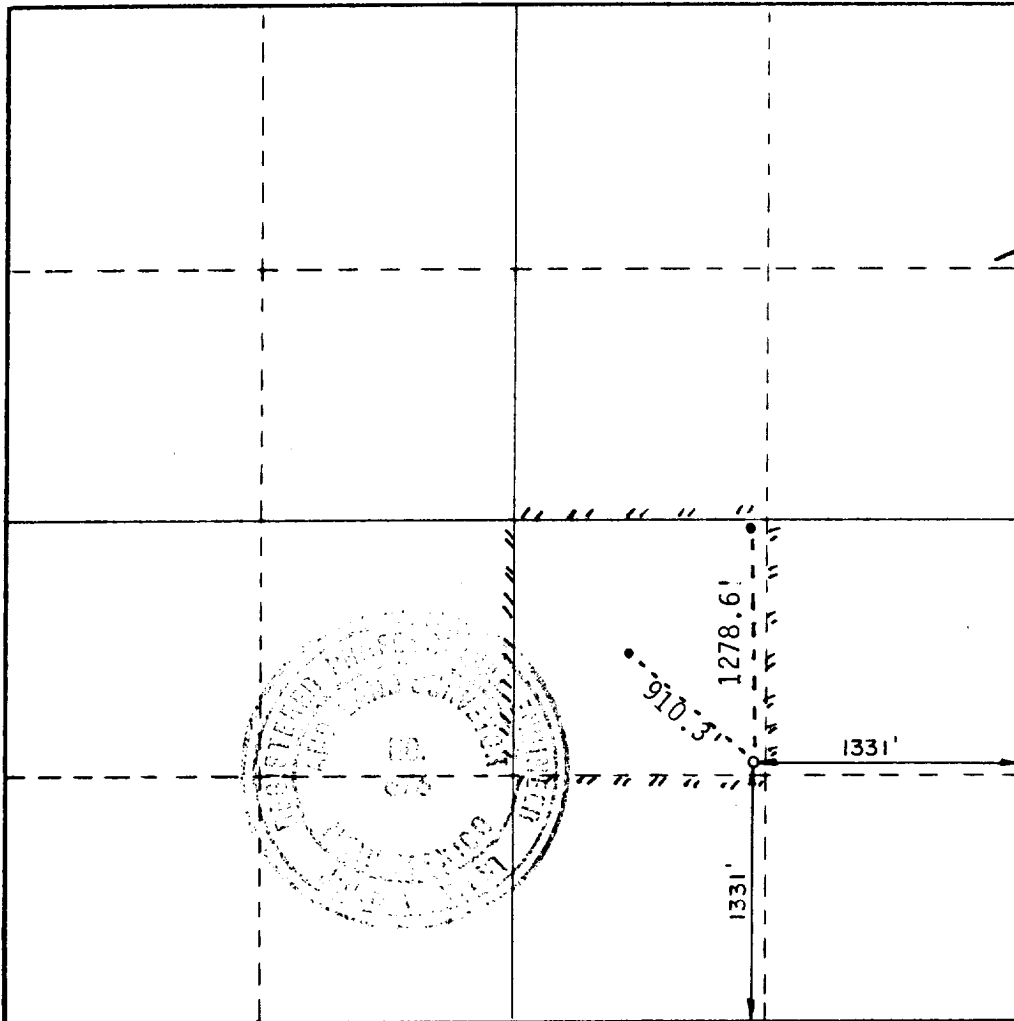
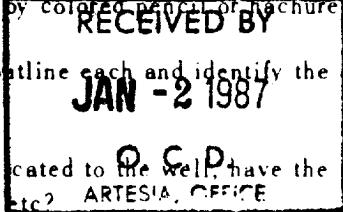
Operator PHILLIPS PETROLEUM COMPANY ✓		Lessee KEELY "C" FEDERAL		Well No. 59
Unit Letter J	Section 25	Township 17-S	Range 29-E	County EDDY
Actual Footage Location of Well:				
1331 feet from the SOUTH line and		1331 feet from the EAST line		
Ground Level Elev. 3583.0	Producing Formation San Andres	Pool Grayburg-Jackson-7R-Q-G-SA	Designated Acreage 40	

1. Outline the acreage dedicated to the subject well by colored pencil or machine marks on the plat below.
2. If more than one lease is dedicated to the well, outline each and identify the ownership thereof (both as to working interest and royalty).
3. If more than one lease of different ownership is dedicated to the well, have the interests of all owners been consolidated by communitization, unitization, force-pooling, etc?

☐ Yes ☐ No If answer is "yes," type of consolidation _____

If answer is "no," list the owners and tract descriptions which have actually been consolidated. (Use reverse side of this form if necessary.) _____

No allowable will be assigned to the well until all interests have been consolidated (by communitization, unitization, forced-pooling, or otherwise) or until a non-standard unit, eliminating such interests, has been approved by the Commission.



CERTIFICATION

I hereby certify that the information contained herein is true and complete to the best of my knowledge and belief.

W. J. Mueller

W. J. Mueller

Position
Eng. Supervisor, Reservoir

Company
Phillips Petroleum Company

Date
12/22/86

I hereby certify that the well location shown on this plat was plotted from field notes of actual surveys made by me or under my supervision, and that the same is true and correct to the best of my knowledge and belief.

Date Surveyed
NOV. 19, 1986

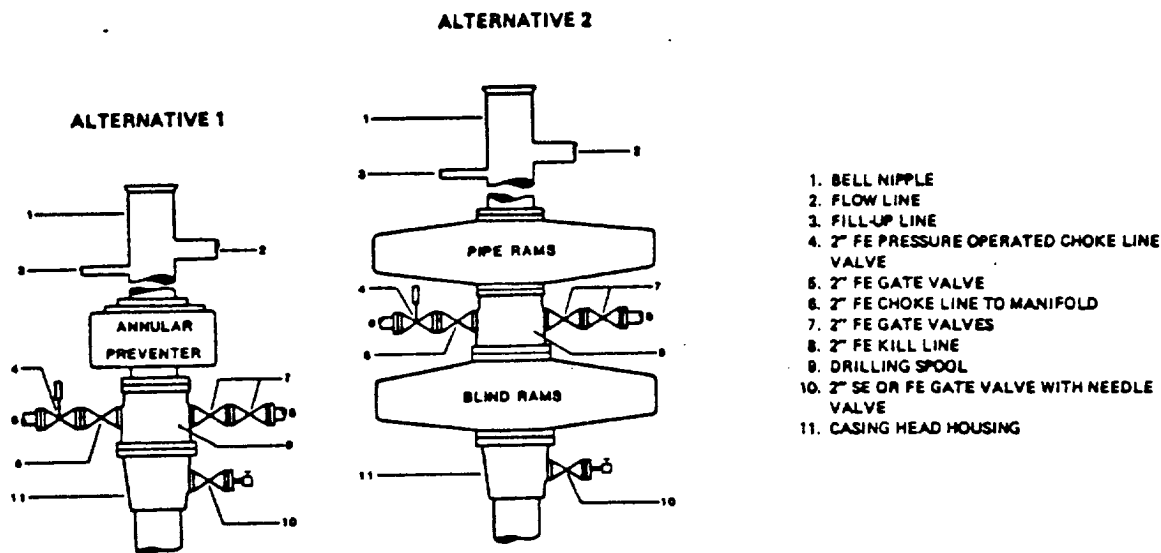
Registered Professional Engineer
and Land Surveyor

Ronald J. Eidson

RONALD J. EIDSON

Certificate No. **JOHN W. WEST, 676**
RONALD J. EIDSON, 3239

FIELD PRACTICES AND STANDARDS



NOTE: THE DRILLING SPOOL MAY BE LOCATED BELOW BOTH SETS OF RAMS IF A DOUBLE PREVENTER IS USED AND IT DOES NOT HAVE SUITABLE OUTLETS BETWEEN RAMS

Figure 7-9. Standard Hydraulic Blowout Preventer Assembly
(2 M or 3 M Working Pressure) Alternative 1

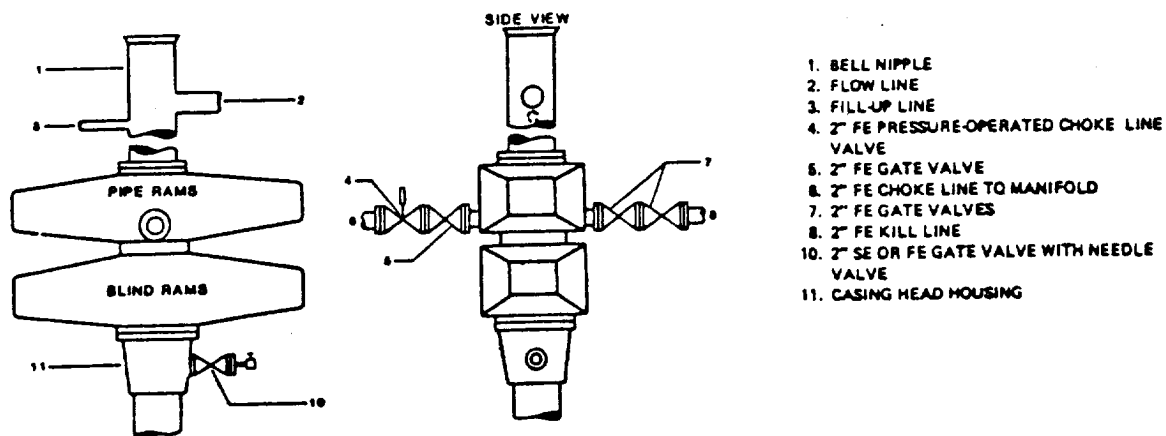


Figure 7-10. Standard Hydraulic Blowout Preventer Assembly
(2 M or 3 M Working Pressure) Alternative 3 (without Drilling Spool)

PHILLIPS PETROLEUM COMPANY

Keely-C Fed, Well No. 59, Fed Lease No. LC-028784-C

DRILLING PROGNOSIS

1. Location of Proposed Well: 1331' FEL & 1331' FSL of Section 25
T-17-S, R-29-E, Eddy County, NM
2. Unprepared Ground Elevation: 3583.0 .
3. The geologic name of the surface formation is Typic Torripsamment
Subgroup/Kermit Berino Series .
4. Type of drilling tools will be rotary .
5. Proposed drilling depth is 3500 .
6. The estimated tops of important geologic markers are as follows:

<u>Tertiary - Surface</u>	<u>Yates - 1080'</u>
<u>Rustler - 250'</u>	<u>Queen - 2100'</u>
<u>Salt - 365'</u>	<u>Grayburg - 2460'</u>
<u>Tansill - 970'</u>	<u>San Andres - 2925'</u>

7. The estimated depths at which anticipated water, oil, gas, or other mineral bearing formations are expected to be encountered are as follows:

Water: Fresh water - None
Salt Water - 2100'
Grayburg-San Andres 2460-3000

8. The proposed casing program is as follows:

Surface String 8 5/8", 24#/ft, K-55, STC
Production String 5 1/2", 17#/ft, K-55, STC

9. Cement Program:

Surface String = Circulate to surface with 400 sks Class 'C' +
2% CaCl₂. (Slurry weight 14.8 ppg, Slurry yield 1.32 cu ft/sk,
6.3 gal wtr/sk) WOC 18 hrs.

Production String = Circulate to surface using caliper volume plus
30% excess. Lead: 800 sk Class 'C' + 10% Diacel D + 9#/sk salt,
(Slurry weight 13.2 ppg, Slurry yield 2.07 cu ft/sk, 11.0 gal
wtr/sk.) Tail: 500 sk Class C + 5#/sk salt, (Slurry weight 15.0 ppg,
Slurry yield 1.35 cu ft/sk, 6.3 gal wtr/sk.) Desired TOC 2300'. If
wtr flow is encountered while drilling, perform job at max. rate &
Then SI BOP 4 hours.

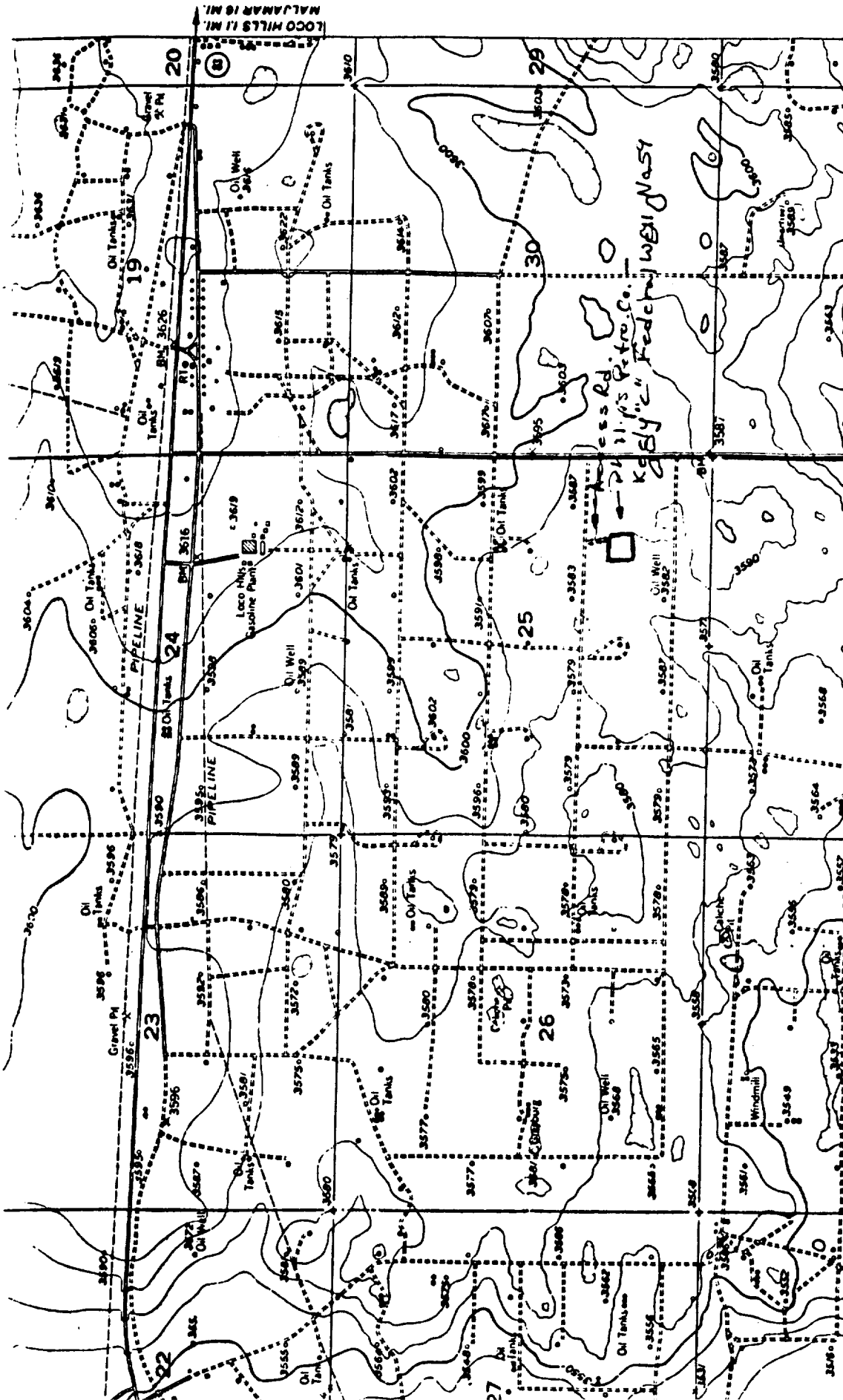
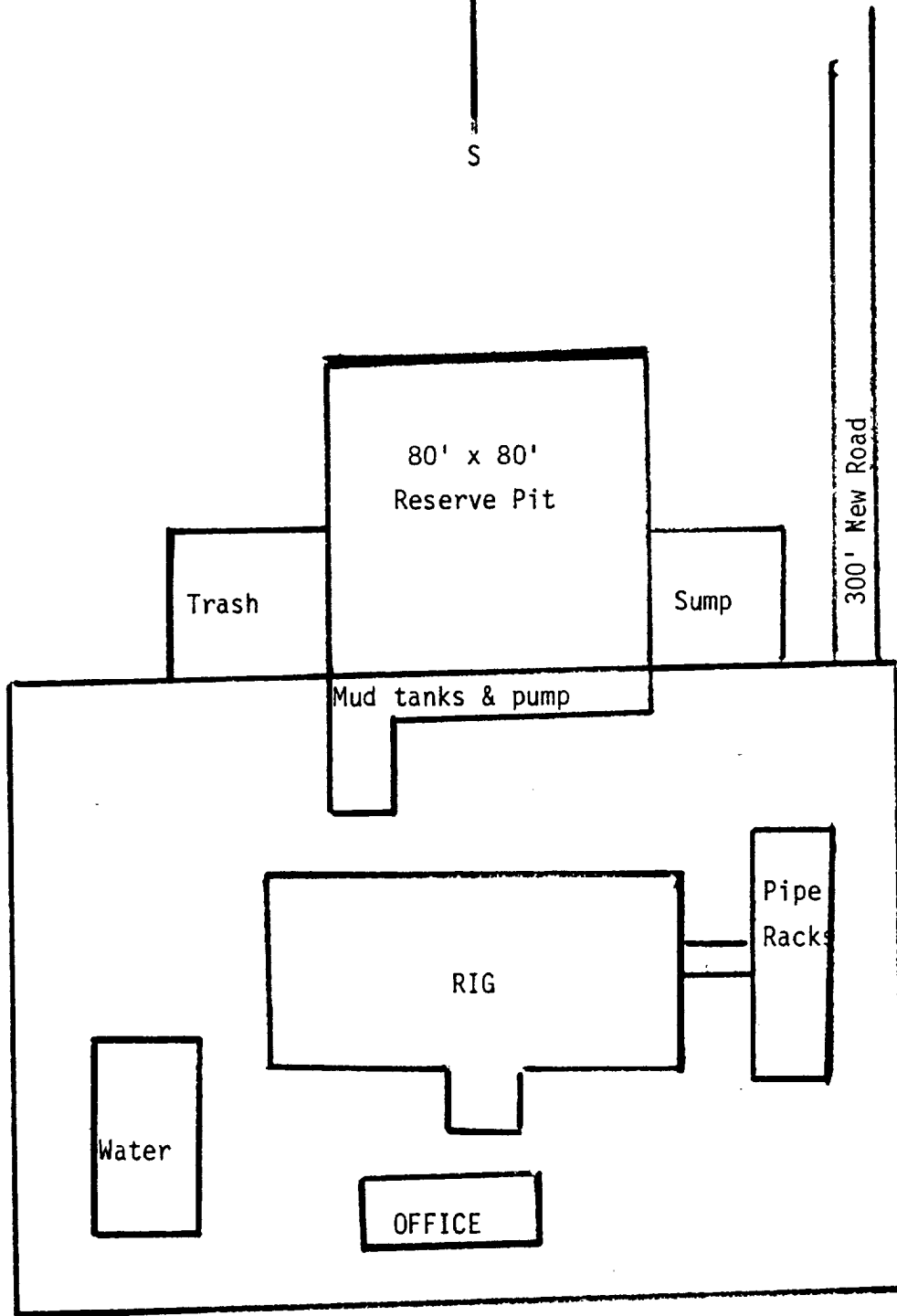
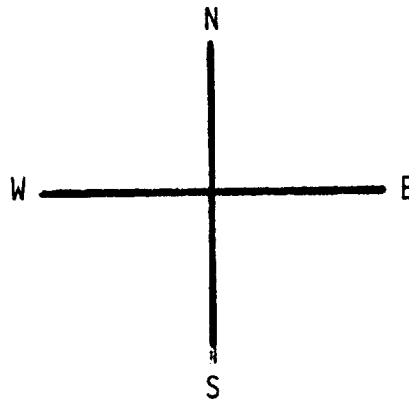


Fig. 3. USGS RED LAKE SE QUADRANGLE, 7.5 Minute Series, 1:24,000, 1955, showing PHILLIPS PETROLEUM COMPANY's proposed Keely "C" Federal Well No. 59, 1331 FSL, 1331 FEL, and access road, Section 25, T17S, R29E, NMPM, Eddy County, New Mexico.



250' x 250'
Keely-C Fed Well No. 59