

UNITED STATES
DEPARTMENT OF THE INTERIOR
BUREAU OF LAND MANAGEMENT

APPLICATION FOR PERMIT TO DRILL, DEEPEN, OR PLUG BACK

1a. TYPE OF WORK

DRILL ☒

DEEPEN ☐

PLUG BACK ☐

b. TYPE OF WELL

OIL
WELL ☒

GAS
WELL ☐

OTHER

SINGLE
ZONE ☒

MULTIPLE
ZONE ☐

2. NAME OF OPERATOR

Phillips Petroleum Company

3. ADDRESS OF OPERATOR

Room 401, 4001 Penbrook St., Odessa, Texas

4. LOCATION OF WELL (Report location clearly and in accordance with any State requirements.)

At surface

660' FNL & 1830' FEL, Unit

At proposed prod. zone

660' FNL & 1830' FEL, Unit

14. DISTANCE IN MILES AND DIRECTION FROM NEAREST TOWN OR POST OFFICE

2-1/2 miles WNW of Loco Hills, NM

15. DISTANCE FROM PROPOSED

LOCATION TO NEAREST

PROPERTY OR LEASE LINE, FT.

(Also to nearest drilg. unit line, if any)

660

16. NO. OF ACRES IN LEASE

1440

17. NO. OF ACRES ASSIGNED

TO THIS WELL 40

18. DISTANCE FROM PROPOSED LOCATION*
TO NEAREST WELL, DRILLING, COMPLETED,
OR APPLIED FOR, ON THIS LEASE, FT.

19. PROPOSED DEPTH

3500

20. ROTARY OR CABLE TOOLS

Rotary

21. ELEVATIONS (Show whether DF, RT, GR, etc.)

GL 3640.6'

22. APPROX. DATE WORK WILL START*

Upon approval

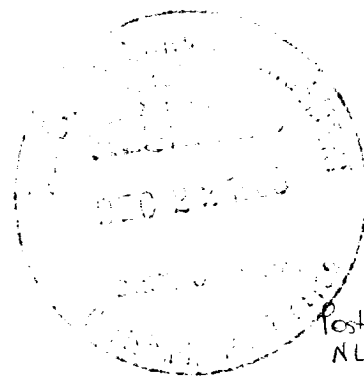
23.

PROPOSED CASING AND CEMENTING PROGRAM

| SIZE OF HOLE | SIZE OF CASING | WEIGHT PER FOOT | SETTING DEPTH | QUANTITY OF CEMENT |
|--------------|----------------|-----------------|---------------|--|
| 12-1/4" | 8-5/8" | 24# | 350' | 400 sk Class C + 10% Diacei P + 9#/sk salt |
| 7-7/8" | 5-1/2" | 17# | 3500' | Circ. to surface using caliper volume + 30% excess (*2) |

(*1) Circ. to surface

(*2) Lead: 800 sk Class C + 10% Diacei P + 9#/sk salt
Tail: 500 sk Class C + 5#/sk salt



Posted ID-1
NL, API
1-9-87

IN ABOVE SPACE DESCRIBE PROPOSED PROGRAM: If proposal is to deepen or plug back, give data on present productive zone and proposed new productive zone. If proposal is to drill or deepen directionally, give pertinent data on subsurface locations and measured and true vertical depths. Give blowout preventer program, if any.

24.

SIGNED

W.J. Mueller

TITLE

Eng. Supervisor, Reservoir

DATE

12/18/86

(This space for Federal or State office use)

PERMIT NO.

APPROVAL DATE

APPROVED BY

TITLE

DATE

CONDITIONS OF APPROVAL, IF ANY:

APPROVAL SUBJECT TO
GENERAL REQUIREMENTS AND
SPECIAL STIPULATIONS

NEW MEXICO OIL CONSERVATION COMMISSION
WELL LOCATION AND ACREAGE DEDICATION PLAT

Form C-102
Supersedes C-128
Effective 1-1-65

All distances must be from the outer boundaries of the Section

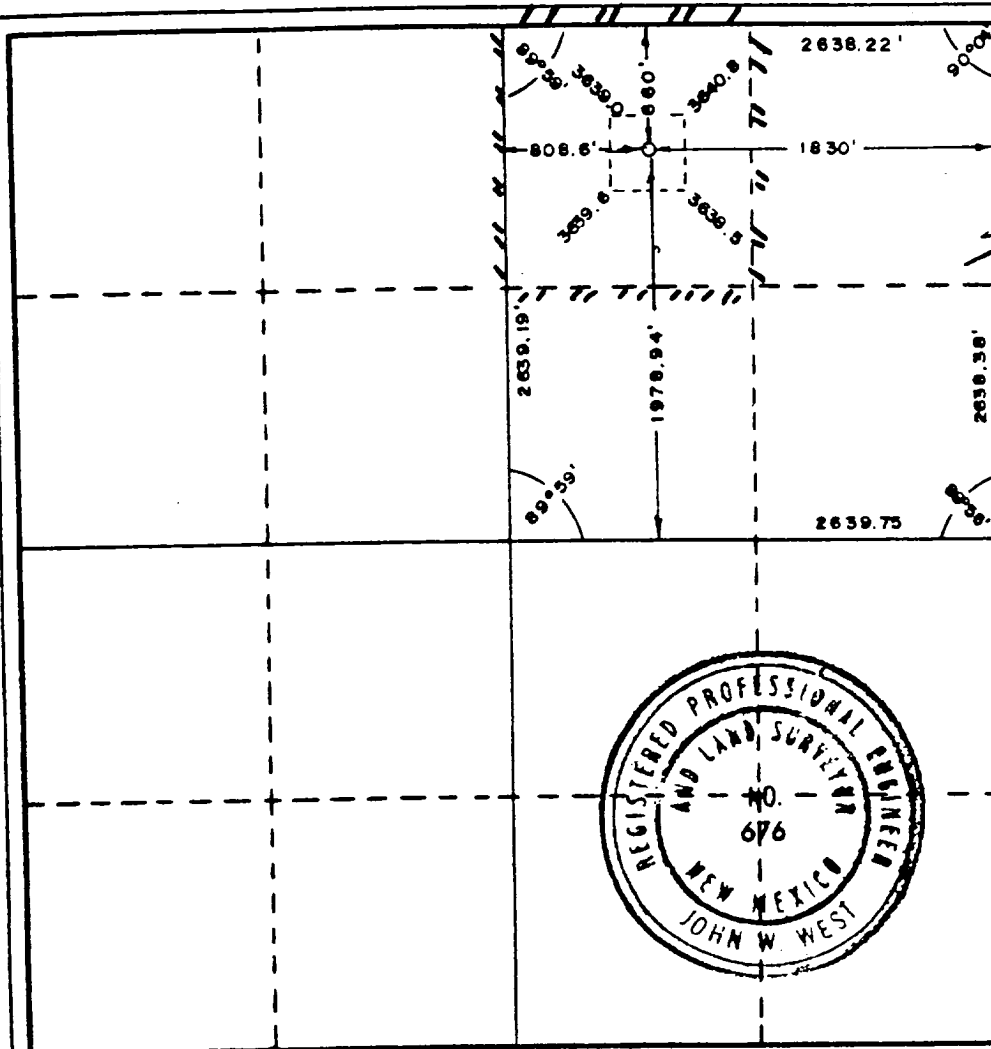
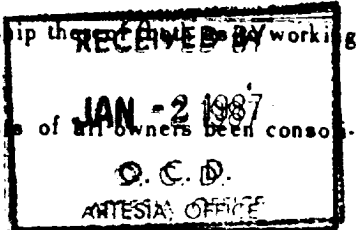
| | | | | |
|---|--|---|---------------------------------------|-----------------------|
| Operator PHILLIPS PETROLEUM COMPANY ✓ | | Lease Keely C - Federal | | Well No. 60 |
| Unit Letter B | Section 13 | Township 17 South | Range 29 East | County Eddy |
| Actual Footage Location of Well: 660 feet from the north line and 1830 feet from the east line | | | | |
| Ground Level Elev. 3640.6 | Producing Formation San Andres | Pool Grayburg-Jackson-7R-Q-G-SA | Dedicated Acreage: 40 Acres | |

- Outline the acreage dedicated to the subject well by colored pencil or hachure marks on the plat below.
- If more than one lease is dedicated to the well, outline each and identify the ownership (by working interest and royalty).
- If more than one lease of different ownership is dedicated to the well, have the interests of all owners been consolidated by communitization, unitization, force-pooling, etc?

☐ Yes ☐ No If answer is "yes," type of consolidation _____

If answer is "no," list the owners and tract descriptions which have actually been consolidated. (Use reverse side of this form if necessary.) _____

No allowable will be assigned to the well until all interests have been consolidated (by communitization, unitization, forced-pooling, or otherwise) or until a non-standard unit, eliminating such interests, has been approved by the Commission.



CERTIFICATION

I hereby certify that the information contained herein is true and complete to the best of my knowledge and belief.

Name
W.J. Mueller
Position
Eng. Supervisor, Reservoir
Company
Phillips Petroleum Co.

Date
12/18/86

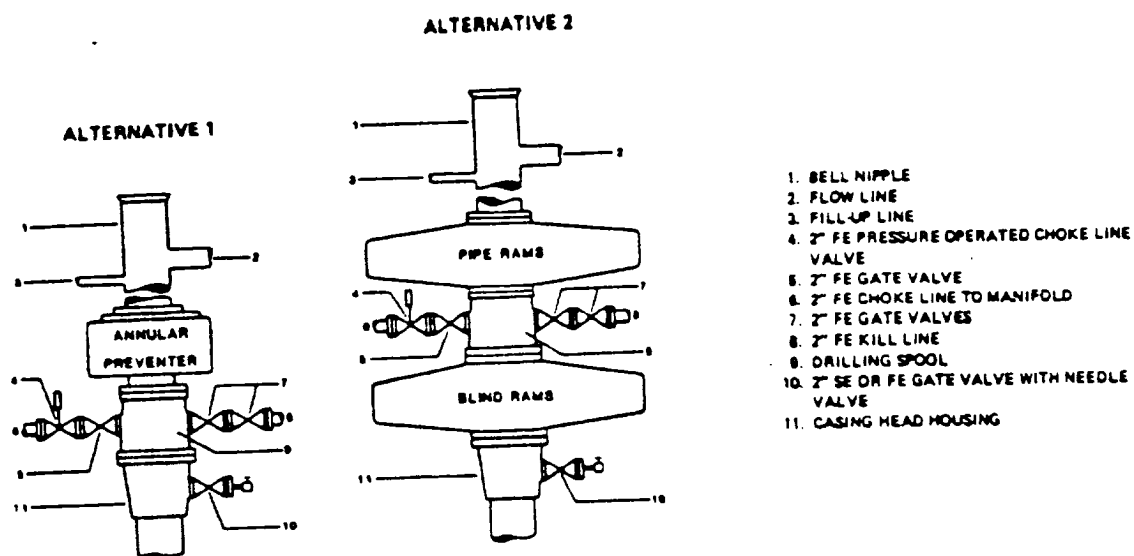
I hereby certify that the well location shown on this plat was plotted from field notes of actual surveys made by me or under my supervision, and that the same is true and correct to the best of my knowledge and belief.

Date Surveyed
Dec 4, 1986

Registered Professional Engineer and/or Land Surveyor

Certificate No. **JOHN W. WEST, 676**
RONALD J. EIDSON, 3239

FIELD PRACTICES AND STANDARDS



NOTE: THE DRILLING SPOOL MAY BE LOCATED BELOW BOTH SETS OF RAMS IF A DOUBLE PREVENTER IS USED AND IT DOES NOT HAVE SUITABLE OUTLETS BETWEEN RAMS

Figure 7-9. Standard Hydraulic Blowout Preventer Assembly (2 M or 3 M Working Pressure) Alternative 1

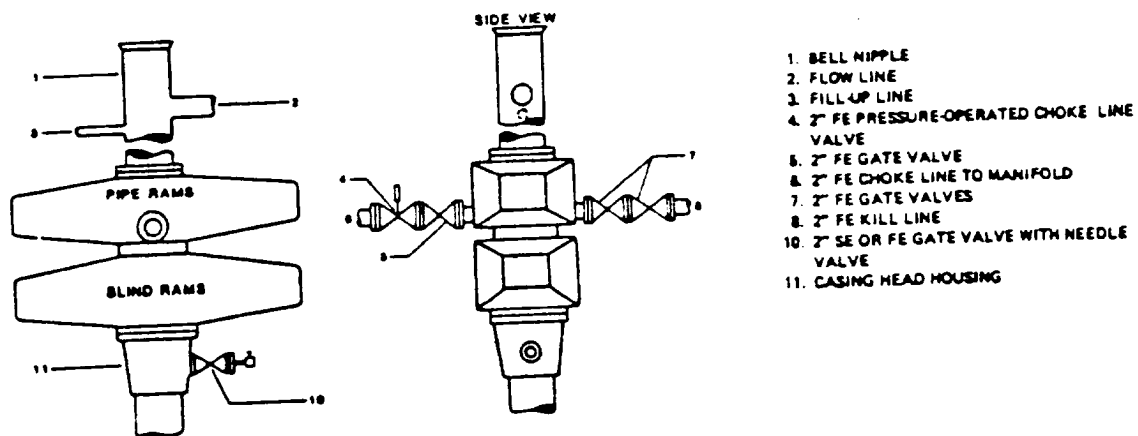


Figure 7-10. Standard Hydraulic Blowout Preventer Assembly (2 M or 3 M Working Pressure) Alternative 3 (without Drilling Spool)

PHILLIPS PETROLEUM COMPANY

Keely-C Fed, Well No. 60, Fed Lease No. LC-028784-C

DRILLING PROGNOSIS

1. Location of Proposed Well: 660' FNL and 1830' FEL of Section 13,
T-17-S, R-29-E, Eddy Co., New Mexico
2. Unprepared Ground Elevation: 3640.6.
3. The geologic name of the surface formation is Typic Torripsamment
Subgroup/Kermit Berino Series.
4. Type of drilling tools will be rotary.
5. Proposed drilling depth is 3500'.
6. The estimated tops of important geologic markers are as follows:

| | |
|-------------------------|---------------------------|
| <u>Tertiary Surface</u> | <u>Yates - 1050'</u> |
| <u>Rustler 200'</u> | <u>Queen - 1945'</u> |
| <u>Salt 440'</u> | <u>Grayburg - 2305'</u> |
| <u>Tansill 930'</u> | <u>San Andres - 2655'</u> |

7. The estimated depths at which anticipated water, oil, gas, or other mineral bearing formations are expected to be encountered are as follows:

Water: Fresh water - None
Salt Water - 1945'
Grayburg & San Andres 2305'-2700'

8. The proposed casing program is as follows:

Surface String 8 5/8" 24#/ft. K-55, ST&C set @ 350'
Production String 5 1/2" 17#/ft. K-55, ST&C set @ 3500'

9. Cement Program:

Surface String = Circulate to surface with 400 sk Class C &
2% CaCl₂. (Slurry weight 14.8 ppq, Slurry yield 1.32 cu ft/sk,
6.3 gal. wtr/sk.) WOC 18 hrs. Test csq. to 1000 psi for 30
min.

Production String = Circulate to surface using caliper volume
plus 30% excess. Lead: 800 sk Class C + 10% Diacel D + 9#/sk
salt. (Slurry weight 13.2 ppq, Slurry yield 2.07 Cu ft/sk,
11.0 gal wtr/sk) Tail: 500 sk Class C + 5#/sk salt (Slurry
weight 15.0 ppq, Slurry yield 1.35 cu ft/sk, 6.3 gal wtr/sk)
Desired TOC 2300'. If wtr. flow is encountered while drilling,
perform job at max. rate then SI BOP 4 hours.

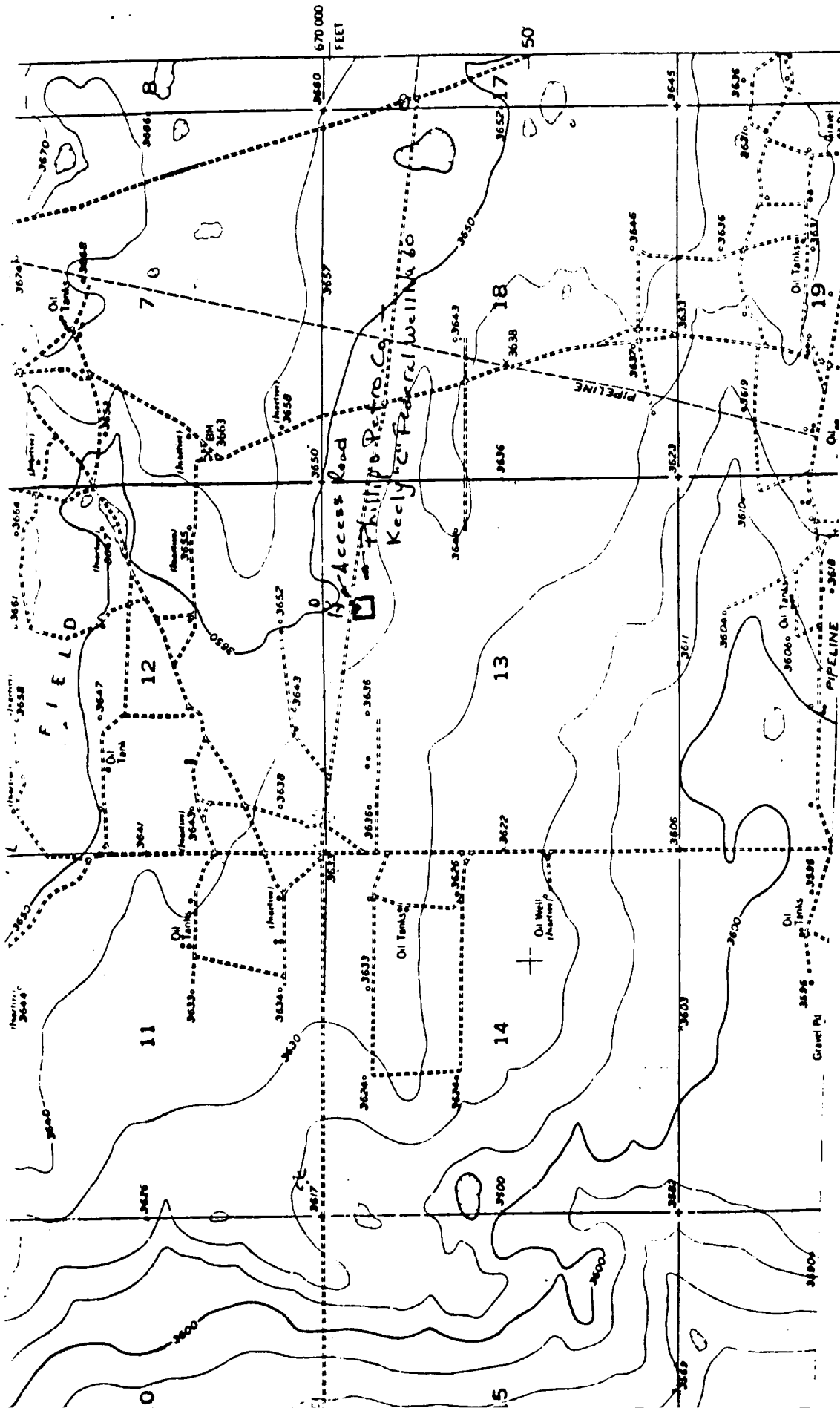
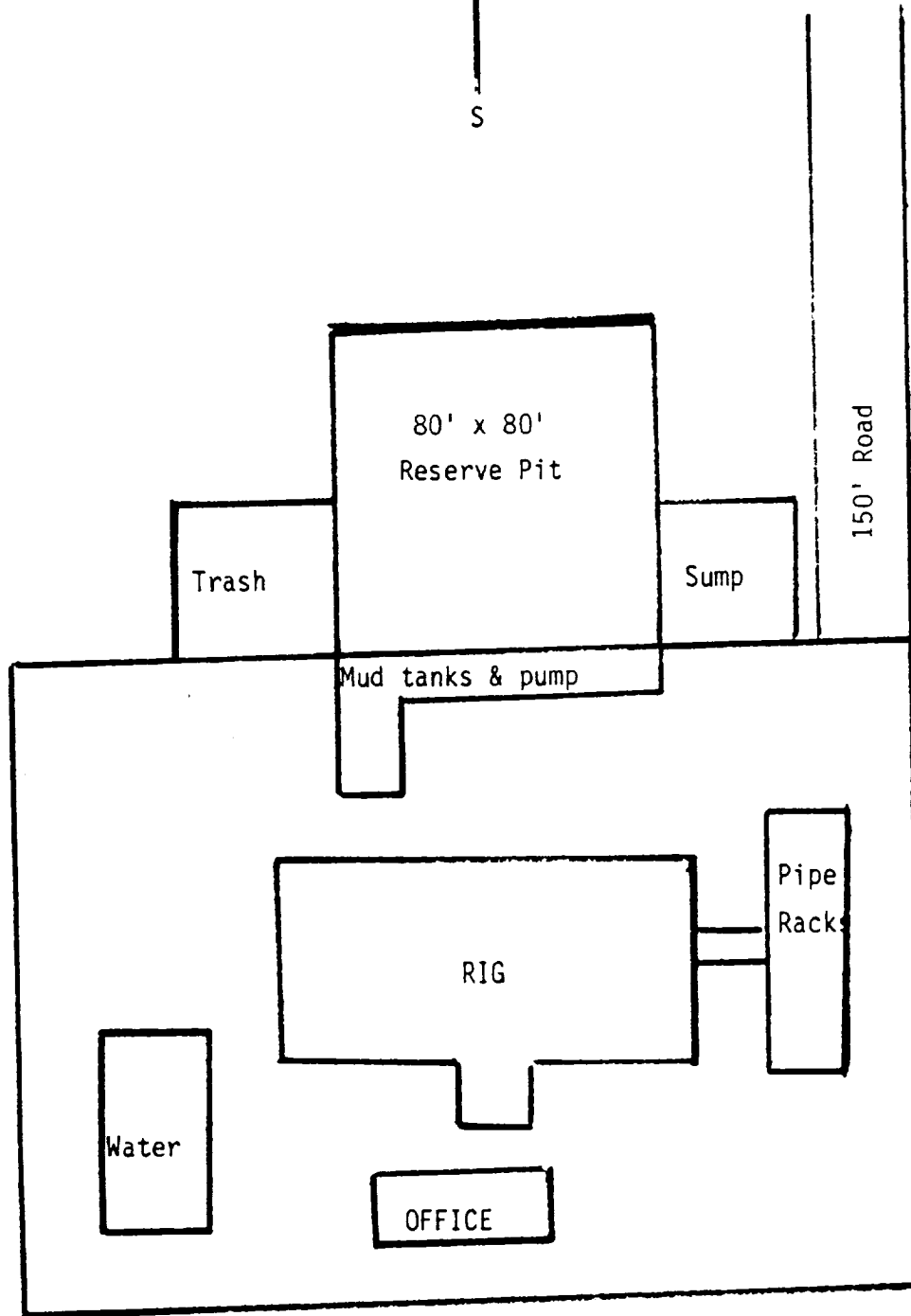
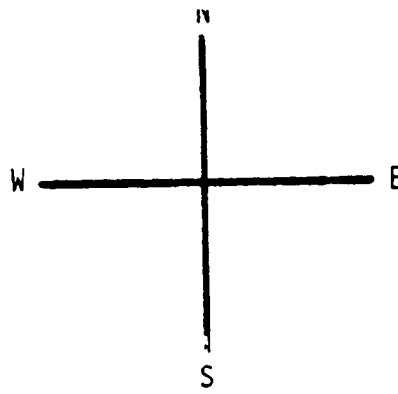


Fig. 4. USGS RED LAKE SE QUADRANGLE, 7.5 Minute Series, 1:24,000, 1955, showing PHILLIPS PETROLEUM COMPANY's proposed Keely "C" Federal Well No. 60, 660 FNL, 1830 FEL, and access road, Section 13, T17S, R29E, NMPM, Eddy County, New Mexico.



250' X 250'

KEELY-C FED WELL NO. 60