

30-015-25760

Form 9-331 C
(May 1963)SUBMIT IN THE DATE*
(Other instructions on
reverse side)Form approved.
Budget Bureau No. 42-R1425.UNITED STATES
DEPARTMENT OF THE INTERIOR
GEOLOGICAL SURVEY

APPLICATION FOR PERMIT TO DRILL, DEEPEN, OR PLUG BACK

1a. TYPE OF WORK

DRILL ☒DEEPEN ☐PLUG BACK ☐

b. TYPE OF WELL

OIL
WELL ☒GAS
WELL ☐OTHER ☐S
ZONE ☐MULTIPLE
ZONES ☐

2. NAME OF OPERATOR

Hondo Oil & Gas Co.

3. ADDRESS OF OPERATOR

P. O. Box 2208 Roswell, NM 88201

4. LOCATION OF WELL (Report location clearly and in accordance with any State requirements.)

At surface

1980' FNL & 1980' FWL

At proposed prod. zone

Same

14. DISTANCE IN MILES AND DIRECTION FROM NEAREST TOWN OR POST OFFICE*

10 miles northeast of Loco Hills, NM

15. DISTANCE FROM PROPOSED*

LOCATION TO NEAREST
PROPERTY OR LEASE LINE, FT.
(Also to nearest drlg. unit line, if any)

1980'

16. NO. OF ACRES IN LEASE

1885

18. DISTANCE FROM PROPOSED LOCATION*

TO NEAREST WELL, DRILLING, COMPLETED,
OR APPLIED FOR, ON THIS LEASE, FT.

1800'

19. PROPOSED DEPTH

3900'

21. ELEVATIONS (Show whether DF, RT, GR, etc.)

3838 CL

23.

PROPOSED CASING AND CEMENTING PROGRAM

SIZE OF HOLE	SIZE OF CASING	WEIGHT PER FOOT	SETTING DEPTH	QUANTITY OF CEMENT
17 1/2"	13 3/8"	54.5#	550'	600 sx "C" Circulate
12 1/4"	8 5/8"	24 #	1800'	1200 sx "HL" & "C"
7 7/8"	5 1/2"	15.5#	3900'	800 sx "HL" & "H"

Mud Program:

0' - 550' Drill with fresh water mud with poss. loss circulation material.
 550' - 1800' Drill with native mud and saturated brine.
 1800' - 3750' Salt Gel, 8.9-9.2 ppg, no W/L.

BOP Program:

Will install on the 8 5/8" intermediate casing a 10" Series 900 Type "E"
 Shaffer Double Hydraulic 6000 psi test, 3000 psi wp BOP and will test daily.

IN ABOVE SPACE DESCRIBE PROPOSED PROGRAM: If proposal is to deepen or plug back, give data on present productive zone and proposed new productive zone. If proposal is to drill or deepen directionally, give pertinent data on subsurface locations and measured and true vertical depths. Give blowout preventer program, if any.

24.

Agent for:

SIGNED

George J. Smith

TITLE

Hondo Oil & Gas Co.

DATE

May 29, 1987

(This space for Federal or State office use)

PERMIT NO.

Orig Sgd. Hondo S. C. Bureau

APPROVAL DATE

APPROVED BY

William A. G. Hondo

TITLE

DATE

6.8.87

CONDITIONS OF APPROVAL, IF ANY:

OIL CONSERVATION DIVISION

STATE OF NEW MEXICO
ENERGY AND MINERALS DEPARTMENTP. O. BOX 2088
SANTA FE, NEW MEXICO 87501Form C-102
Revised 10-1-79

All distances must be from the outer boundaries of the Section.

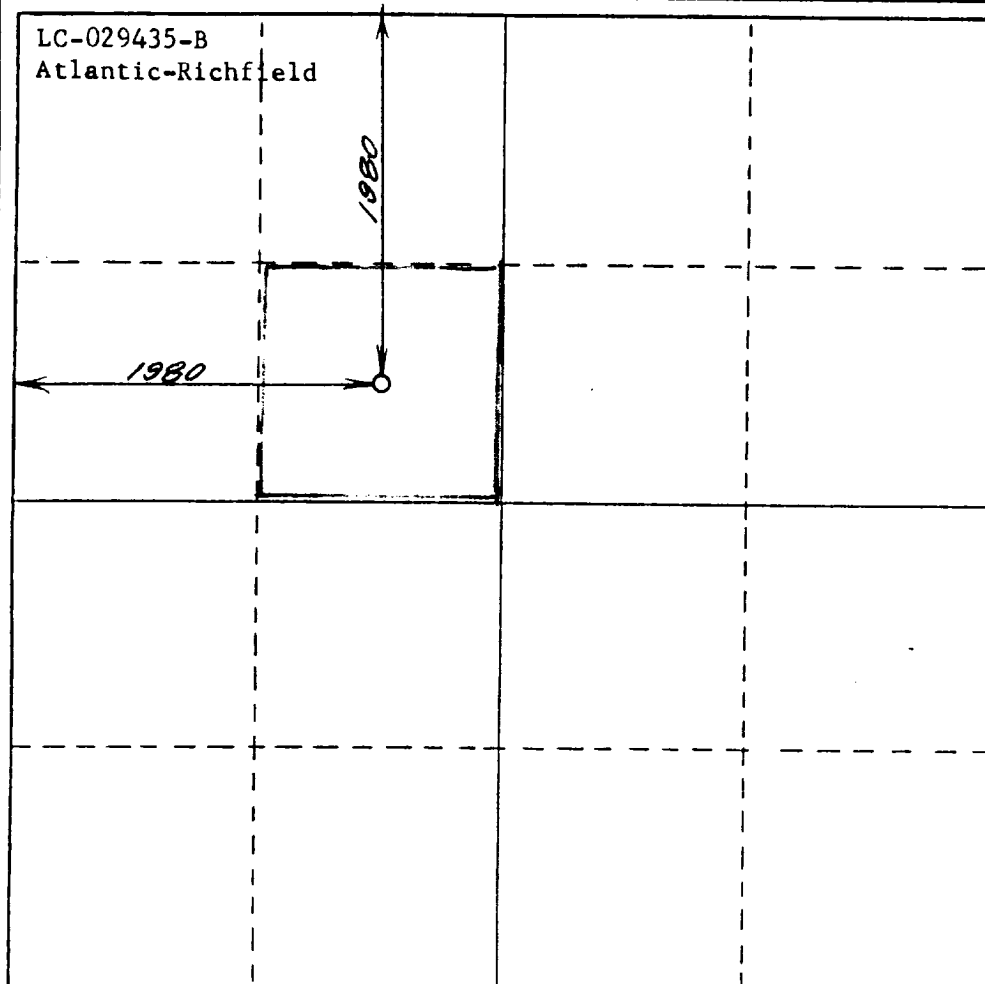
Operator Hondo Oil & Gas Co.		Lease J.L. Keel		Well No. 36
Unit Letter F	Section 5	Township 17 South	Range 31 East	County Eddy
Actual Footage Location of Well: 1980 feet from the North line and 1980 feet from the West line				
Ground Level Elev. 3838	Producing Formation Grayburg	Pool Grayburg Jackson	Dedicated Acreage: 40 Acres	

1. Outline the acreage dedicated to the subject well by colored pencil or hachure marks on the plat below.
2. If more than one lease is dedicated to the well, outline each and identify the ownership thereof (both as to working interest and royalty).
3. If more than one lease of different ownership is dedicated to the well, have the interests of all owners been consolidated by communitization, unitization, force-pooling, etc?

☐ Yes ☐ No If answer is "yes," type of consolidation _____

If answer is "no," list the owners and tract descriptions which have actually been consolidated. (Use reverse side of this form if necessary.) _____

No allowable will be assigned to the well until all interests have been consolidated (by communitization, unitization, forced-pooling, or otherwise) or until a non-standard unit, eliminating such interests, has been approved by the Division.



CERTIFICATION

I hereby certify that the information contained herein is true and complete to the best of my knowledge and belief.

Name

George R. Smith

Position

Agent for:

Company

Hondo Oil & Gas Company

Date

May 30, 1987

I hereby certify that the well location shown on this plat was plotted from field notes of actual surveys made by me or under my supervision, and that the same is true and correct to the best of my knowledge and belief.

27 May 1987

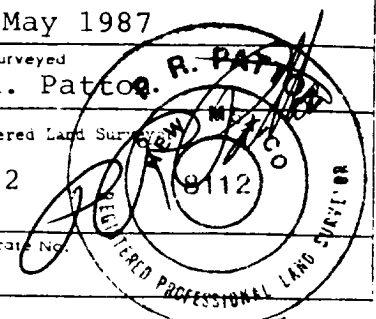
Date Surveyed

P.R. Patton

Registered Land Surveyor

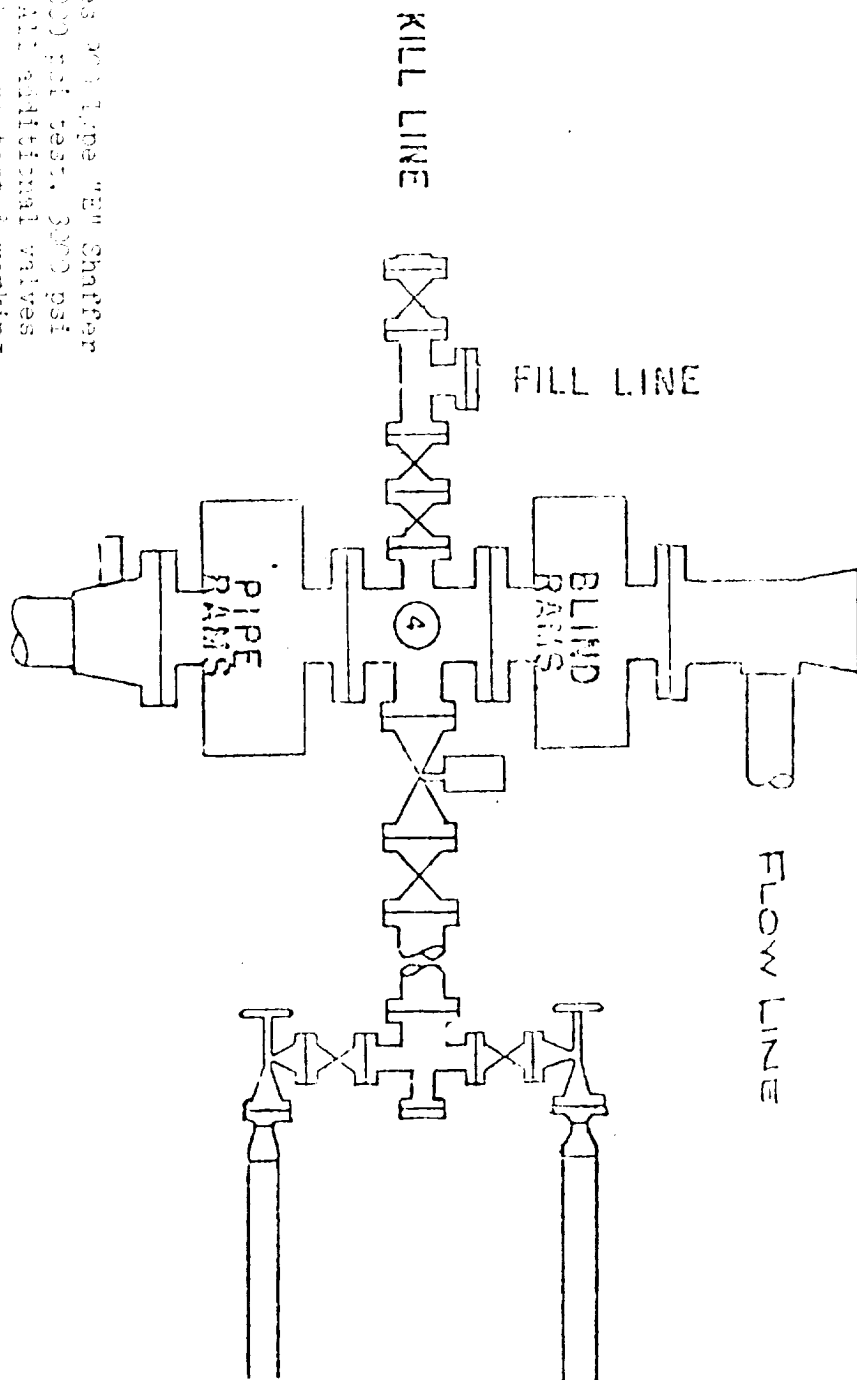
8112

Certificate No.



0 330 660 990 1320 1650 1980 2310 2640 2000 1500 1000 500 0

BEK DRILLING CO., INC. - Rig 1 & 3
BLOWOUT PREVENTER SPECIFICATION



BOP's are 10" Series 201 Type "E" Shaffer Double Hydraulic 1000 psi test, 3000 psi working pressure. All additional valves & connections are the same type & working pressure.

EXHIBIT "E"
 HONDO OIL & GAS COMPANY
 J. J. Keel "B", Well No. 36
 BOP Specifications

APPLICATION FOR DRILLING

HONDO OIL & GAS COMPANY
J. L. Keel "B", Well No. 36
1980' FNL & 1980' FWL, Sec. 5-T17S-R31E
Eddy County, New Mexico
Lease No.: LC-029435-B
(Development Well)

In conjunction with Form 9-331C, Application for Permit to Drill subject well, Hondo Oil & Gas Company submits the following items of pertinent information in accordance with BLM requirements:

1. The geologic surface formation is recent Permian with quaternary alluvium and other surficial deposits.
2. The estimated tops of geologic markers are as follows:

Rustler Anhy.	500'	Queen	2508'
Top of Salt.	650'	Grayburg	2930'
Base of Salt	1380'	San Andres	3240'
Yates	1570'	T. D.	3900'
Seven Rivers	1875'		

3. The estimated depths at which water, oil or gas formations are anticipated to be encountered:

Water: Random fresh water from surface to 300' +/-, and water flow from injection wells possible at around 2800'.

Oil: Grayburg at approximately 2930' or below.

Gas: None anticipated.

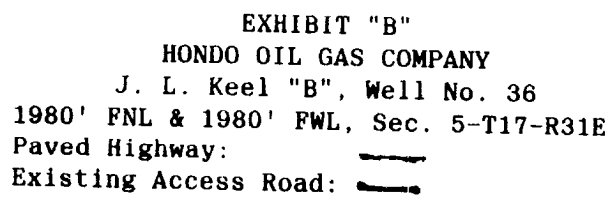
4. Proposed Casing Program: See Form 9-331C.
5. Proposed Control Equipment: See Form 9-331C and Exhibit "E".
6. Mud Program: See Form 9-331C.
7. Auxiliary Equipment: Blowout preventer, gas detector, kelly cock, pit level monitor, flow sensors and stabbing valve.
8. Testing, Logging and Coring Program:

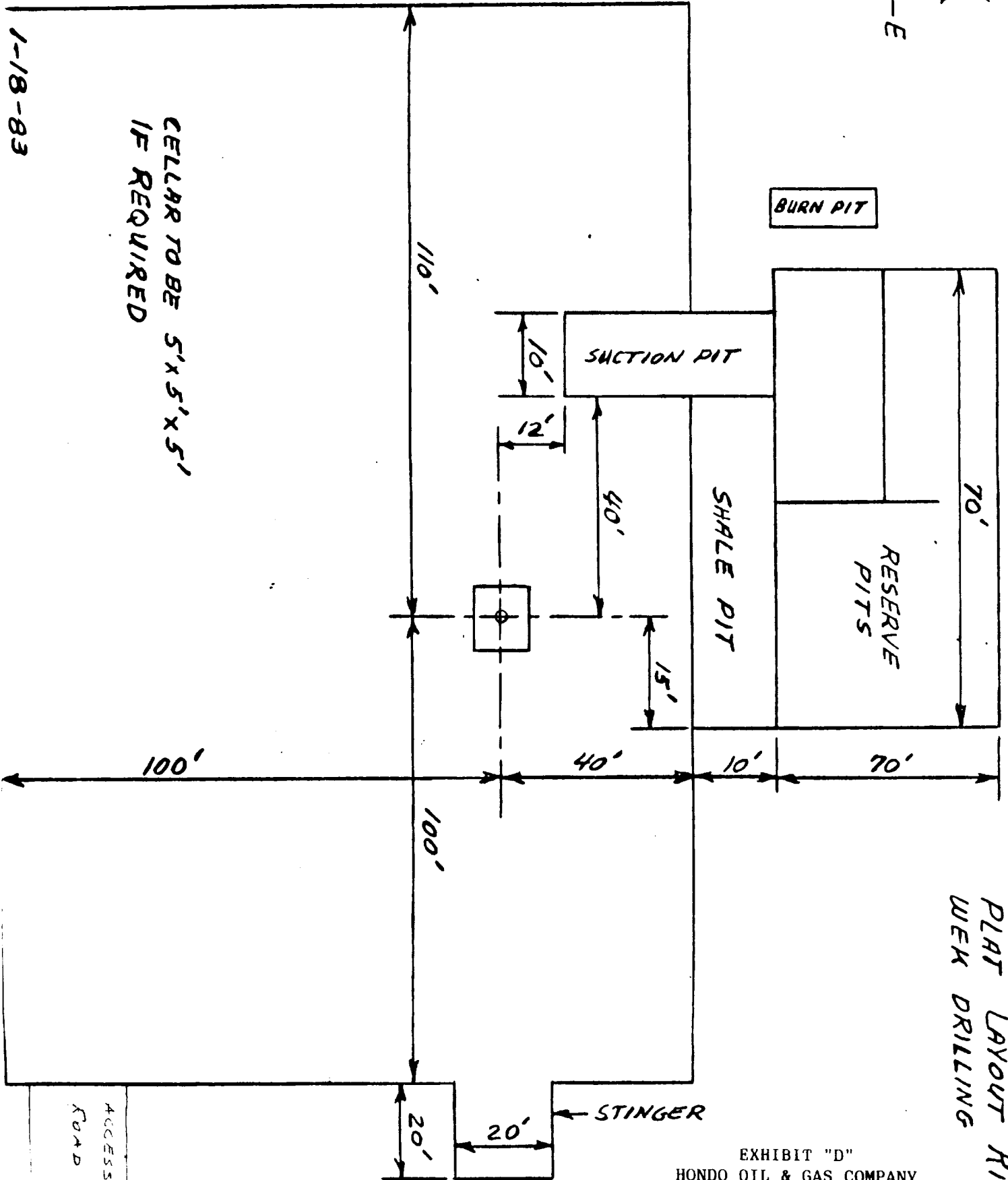
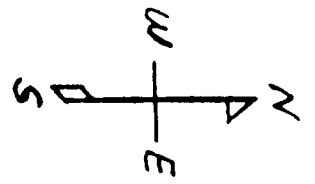
Drill Stem Tests: None planned.

Logging: CNL-LDT-GR	T.D.-Int. casing
GR-CAL-DLL-MSFL	T.D.-Int. casing
GR	T.D. to 550'

Coring: None planned.

9. No abnormal pressures or temperatures are anticipated. In the event abnormal pressures are encountered the proposed mud program will be modified to increase the mud weight.
10. Anticipated starting date: June 10, 1987
Anticipated completion of drilling operations: Approximately 30 days.





PLAT LAYOUT RIG 1
WELL DRILLING

EXHIBIT "D"
HONDO OIL & GAS COMPANY
J. L. Keel "B", Well No. 36
Rig Layout