

UNITED STATES
DEPARTMENT OF THE INTERIOR
GEOLOGICAL SURVEYSUBMIT TRIPLICATE*
(Other instructions on
reverse side)Form approved.
Budget Bureau No. 42-R1425

APPLICATION FOR PERMIT TO DRILL, DEEPEN, OR PLUG BACK

1a. TYPE OF WORK DRILL <input checked="" type="checkbox"/> DEEPEN <input type="checkbox"/> PLUG BACK <input type="checkbox"/>		5. LEASE DESIGNATION AND SERIAL NO. LC-028731(b)	
b. TYPE OF WELL OIL WELL <input checked="" type="checkbox"/> GAS WELL <input type="checkbox"/> OTHER <input type="checkbox"/>		6. IF INDIAN, ALLOTTEE OR TRIBE NAME	
2. NAME OF OPERATOR Marbob Energy Corporation		7. UNIT AGREEMENT NAME	
3. ADDRESS OF OPERATOR P.O. Drawer 217, Artesia, NM 88210		8. FARM OR LEASE NAME M. Dodd "B"	
4. LOCATION OF WELL (Report location clearly and in accordance with any State or Federal Office instructions) At surface 75-FNL 25 FWL At proposed prod. zone same		9. WELL NO. 61	
14. DISTANCE IN MILES AND DIRECTION FROM NEAREST TOWN OR POST OFFICE* 20 air miles east of Artesia, NM 88210		10. FIELD AND POOL, OR WILDCAT Grbg Jackson SR Q Gb SA	
15. DISTANCE FROM PROPOSED* LOCATION TO NEAREST PROPERTY OR LEASE LINE, FT. (Also to nearest drlg. unit line, if any) 75'		11. SEC., T., R., M., OR BLK. AND SURVEY OR AREA Sec. 14-T17S-R29E	
16. NO. OF ACRES IN LEASE 1480		12. COUNTY OR PARISH Eddy	
17. NO. OF ACRES ASSIGNED TO THIS WELL 40		13. STATE NM	
18. DISTANCE FROM PROPOSED* LOCATION TO NEAREST WELL, DRILLING, COMPLETED, OR APPLIED FOR, ON THIS LEASE, FT. 971'		20. ROTARY OR CABLE TOOLS Rotary	
21. ELEVATIONS (Show whether DF, RT, GR, etc.) 3619.1 GR		22. APPROX. DATE WORK WILL START* 8/10/87	

23. PROPOSED CASING AND CEMENTING PROGRAM				
SIZE OF HOLE	SIZE OF CASING	WEIGHT PER FOOT	SETTING DEPTH	QUANTITY OF CEMENT
12 1/4"	8 5/8"	24#	350'	Sufficient to circulate
7 7/8"	5 1/2"	15.5#	5000'	1500 sx, to base of salt

Pay zone will be selectively perforated and stimulated as needed for optimum production.

Attached are: 1. Location and acreage dedication plat
2. Supplemental drilling data
3. Surface use plan

RECEIVED
AUG 3 9 32 AM '87
CARLSBAD RESOURCE
AREA HEADQUARTERS

IN ABOVE SPACE DESCRIBE PROPOSED PROGRAM: If proposal is to deepen or plug back, give data on present productive zone and proposed new productive zone. If proposal is to drill or deepen directionally, give pertinent data on subsurface locations and measured and true vertical depths. Give blowout preventer program, if any.

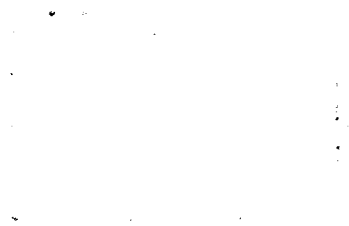
24. SIGNED Rhonda Nelson TITLE Production Clerk DATE 7/31/87
(This space for Federal or State office use)

PERMIT NO. _____ APPROVAL DATE _____
APPROVED BY Scott C. Adams TITLE _____ DATE 8-14-87
CONDITIONS OF APPROVAL, IF ANY:

NSL-2359
Appv. 7-23-87

*See Instructions On Reverse Side

Post ID-1
8-21-87
New loc & API



**NEW MEXICO OIL CONSERVATION COMMISSION
WELL LOCATION AND ACREAGE DEDICATION PLAT**

Form C-102
Supersedes C-128
Effective 1-1-65

All distances must be from the outer boundaries of the Section.

Operator Marbob Energy Corporation			Lease M. Dodd B		Well No. 61
Unit Letter D	Section 14	Township 17 South	Range 29 East	County Eddy	
Actual Footage Location of Well: 25 feet from the West line and 125 feet from the North line					
Ground Level Elev. 3619.1	Producing Formation San Andres		Pool Grayburg Jackson SR Q Gb SA		Dedicated Acreage: 40 Acres

- Outline the acreage dedicated to the subject well by colored pencil or hachure marks on the plat below.
- If more than one lease is dedicated to the well, outline each and identify the ownership thereof (both as to working interest and royalty).
- If more than one lease of different ownership is dedicated to the well, have the interests of all owners been consolidated by communitization, unitization, force-pooling, etc?

☐ Yes ☐ No If answer is "yes," type of consolidation _____

If answer is "no," list the owners and tract descriptions which have actually been consolidated (Use reverse side of this form if necessary.) _____

No allowable will be assigned to the well until all interests have been consolidated (by communitization, unitization, forced-pooling, or otherwise) or until a non-standard unit, eliminating such interests, has been approved by the Commission.

CERTIFICATION

I hereby certify that the information contained herein is true and complete to the best of my knowledge and belief.

Name

Ron Head

Position

Landman

Company

Marbob Energy Corporation

Date

8/7/87

I hereby certify that the well location shown on this plat was plotted from field notes of actual surveys made by me or under my supervision, and that the same is true and correct to the best of my knowledge and belief.

Restaked 8-7-1987

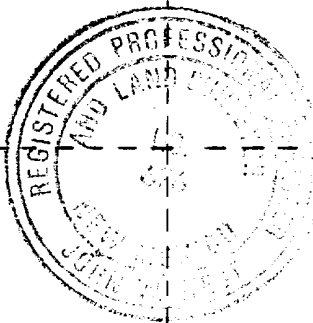
Date Surveyed

June 8, 1987

Registered Professional Engineer
and/or Land Surveyor

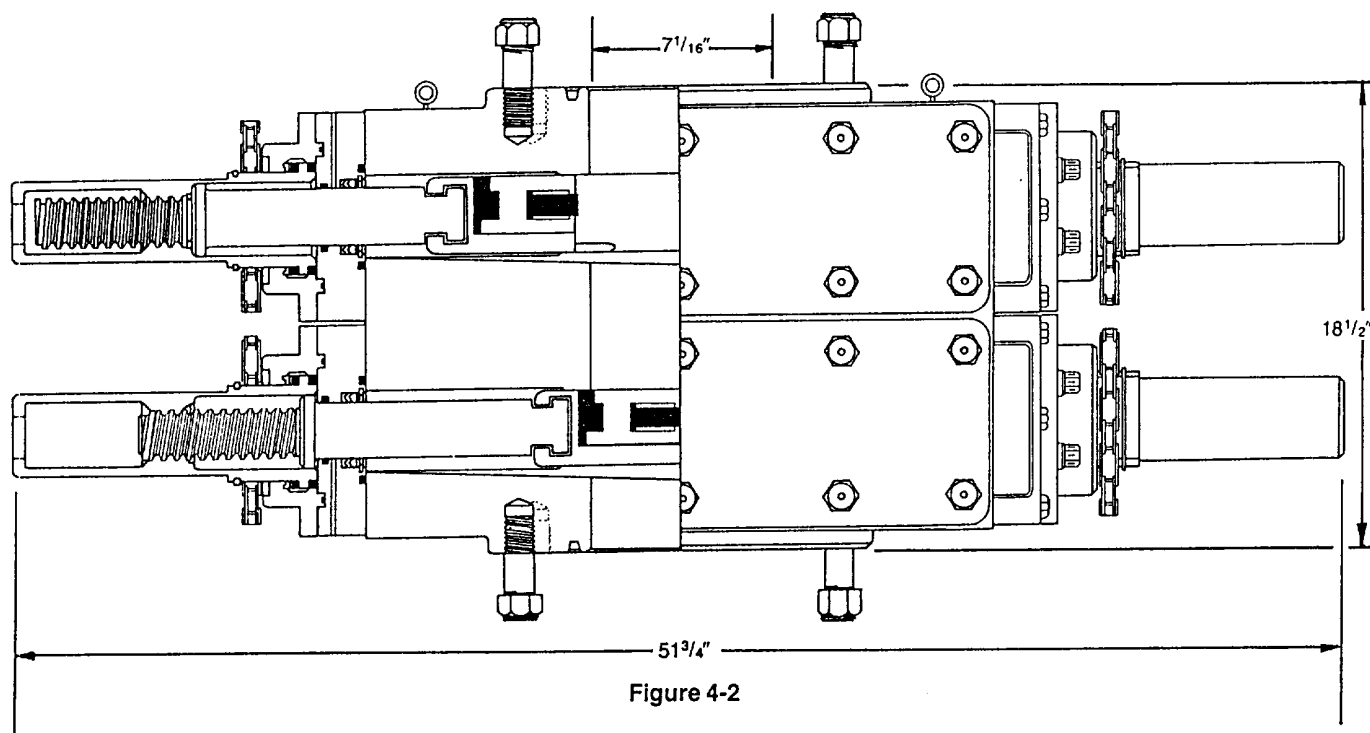
Certificate No.

JOHN W. WEST, 676
RONALD J. EIDSON, 3239



98580

0 330 660 990 1320 1650 1980 2310 2640 2000 1500 1000 500 0



DIMENSIONS AND WEIGHTS

			Manual
Weight	Single (pounds)		1,272
	Double (pounds)		2,335
Overall height, less studs	Single (inches)		10
	Double (inches)		18½
Overall length (inches)			51¾
Overall width, less handwheel (inches)			20¼
Opening through preventer (inches)			7⅛
Working pressure (psi)			3,000
Test pressure (psi)			6,000
Handwheel diameter (inches)			20
Ring joint gasket API number			R-45

SUP Exhibit "E"
Sketch of DOP
Marbob Energy Corporation
M. Dodd "B" Fed. #61
NW1/4NW1/4, Section 14
T-17S, R-29E

SUPPLEMENTAL DRILLING DATA

MARBOB ENERGY CORPORATION
WELL #61 M. DODD "B" FEDERAL
NW1/4NW1/4 SEC.14-17S-29E
EDDY COUNTY, NEW MEXICO
(DEVELOPMENT WELL)

1. SURFACE FORMATION: Quaternary.

2. ESTIMATED TOPS OF GEOLOGIC MARKERS:

Salt	360'	Queen	1815'
Base Salt	780'	Grayburg	2140'
Yates	930'	San Andres	2510'
Seven Rivers	1145'	Glorietta	3900'

3. ANTICIPATED POROSITY ZONES:

Water	Above 180'
Oil	2350 - 5000'

4. CASING DESIGN:

SIZE	INTERVAL	WEIGHT	GRADE	JOINT	CONDITION
8 5/8"	0-350'	24.0#	K-55	STC	New
5 1/2"	0-5000'	15.5#	K-55	STC	New

5. SURFACE CONTROL EQUIPMENT: A double ram-type or annular BOP will be used. (See diagram attached as Exhibit "E")

6. CIRCULATING MEDIUM:

0 - 350' Fresh water mud with gel or lime as needed for viscosity control.

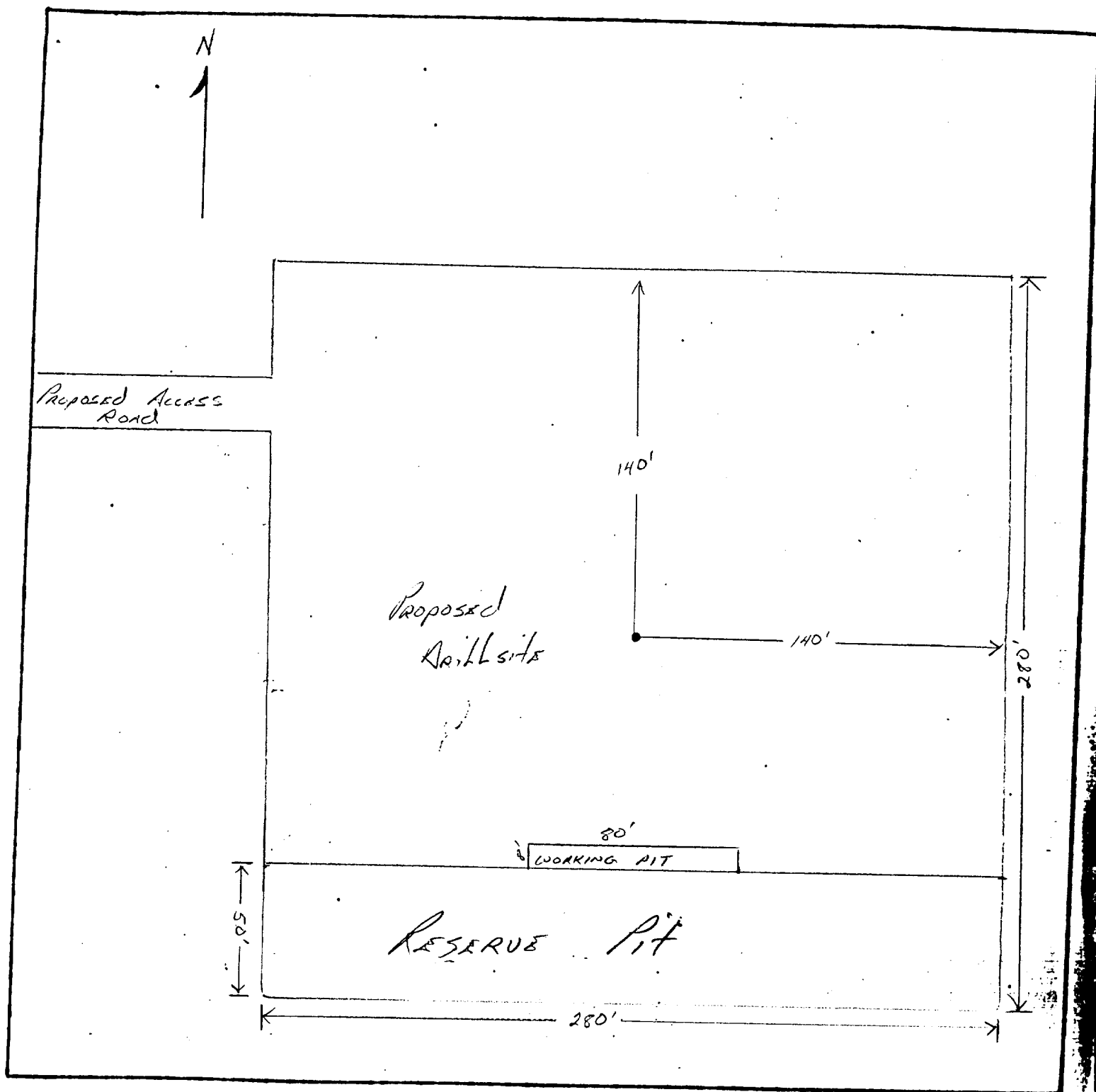
350' - 5000' Salt water mud, conditioned as necessary for control of viscosity and water loss or gain.

7. AUXILIARY EQUIPMENT: Drill string safety valve.

8. LOGGING PROGRAM: CNL-FDC W/GR Log will be run to TD.

9. ABNORMAL PRESSURES, TEMPERATURES OR GASES: A water flow may be encountered in the salt section.

10. ANTICIPATED STARTING DATE: It is planned that operations will commence about August 10, 198 . Duration of drilling, testing and completion operations should be one to four weeks.



LEGEND

1cm = 20 ft.

SUP Exhibit "D"

SKETCH OF PROPOSED WELL PAD
 Marbob Energy Corporation
 M. Dodd "B" Fed. #61
 NW1/4NW1/4
 Sec. 14, T-17S, R-29E

30-015-25790

12-4-87
dual laterolog
microguard
2211-4495
compensated spectral
natural gamma
3430-4466
Spectral density dual
Spaced neutron log
2202-4493

NSL-2359
Appv. 7-23-87

