

UNITED STATES
DEPARTMENT OF THE INTERIOR
GEOLOGICAL SURVEY

30-015-25837

5. LEASE DESIGNATION AND SERIAL NO.

LC-056551 (A)

6. IF INDIAN, ALLOTTEE OR TRIBE NAME

7. UNIT AGREEMENT NAME

8. FARM OR LEASE NAME

Holder "CB"

9. WELL NO.

4

10. FIELD AND POOL, OR WILDCAT

Grayburg Jackson SR-Q-G-SA

11. SEC., T., R., M., OR BLK.
AND SURVEY OR AREA

Sec. 17-T17S-R30E

12. COUNTY OR PARISH 13. STATE

Eddy

NM

APPLICATION FOR PERMIT TO DRILL, DEEPEN, OR PLUG BACK

1a. TYPE OF WORK

DRILL ☒DEEPEN ☐PLUG BACK ☐

b. TYPE OF WELL

OIL
WELL ☒GAS
WELL ☐

OTHER

SINGLE
ZONE ☒MULTIPLE
ZONE ☐

2. NAME OF OPERATOR

Marbob Energy Corporation

3. ADDRESS OF OPERATOR

P.O. Drawer 217, Artesia, NM 88210

4. LOCATION OF WELL (Report location clearly and in accordance with any State requirements.)

At surface

2310 FNL 330 FWL

At proposed prod. zone

same

14. DISTANCE IN MILES AND DIRECTION FROM NEAREST TOWN OR POST OFFICE*

22 air miles east of Artesia, New Mexico

15. DISTANCE FROM PROPOSED*

LOCATION TO NEAREST
PROPERTY OR LEASE LINE, FT.
(Also to nearest drig. unit line, if any)

330'

16. NO. OF ACRES IN LEASE

160

17. NO. OF ACRES ASSIGNED
TO THIS WELL

40

18. DISTANCE FROM PROPOSED LOCATION*

TO NEAREST WELL, DRILLING, COMPLETED,
OR APPLIED FOR, ON THIS LEASE, FT.

470.5'

19. PROPOSED DEPTH

5000'

20. ROTARY OR CABLE TOOLS

Rotary

21. ELEVATIONS (Show whether DF, RT, GR, etc.)

3646.0'

22. APPROX. DATE WORK WILL START*

11/26/87

23.

PROPOSED CASING AND CEMENTING PROGRAM

SIZE OF HOLE	SIZE OF CASING	WEIGHT PER FOOT	SETTING DEPTH	QUANTITY OF CEMENT
12 1/4"	8 5/8"	24#	450'	Sufficient to circulate
7 7/8"	5 1/2"	17#	5000'	1500 sx to base of salt.

Pay zone will be selectively perforated and stimulated as needed for optimum production.

Attached are: 1. Location & acreage dedication plat
2. Supplemental drilling data
3. Surface use plan

RECEIVED
NOV 5 10 50 AM '87
CARLSBAD RESOURCE
AREA HEADQUARTERS105T 10 #1
11-2-87

IN ABOVE SPACE DESCRIBE PROPOSED PROGRAM: If proposal is to deepen or plug back, give data on present productive zone and proposed new productive zone. If proposal is to drill or deepen directionally, give pertinent data on subsurface locations and measured and true vertical depths. Give blowout preventer program, if any.

24.

SIGNED

Rhonda Nelson

TITLE Production Clerk

DATE 11/3/87

(This space for Federal or State office use)

PERMIT NO.

APPROVAL DATE

APPROVED BY

TITLE

DATE

11-10-87

CONDITIONS OF APPROVAL, IF ANY:

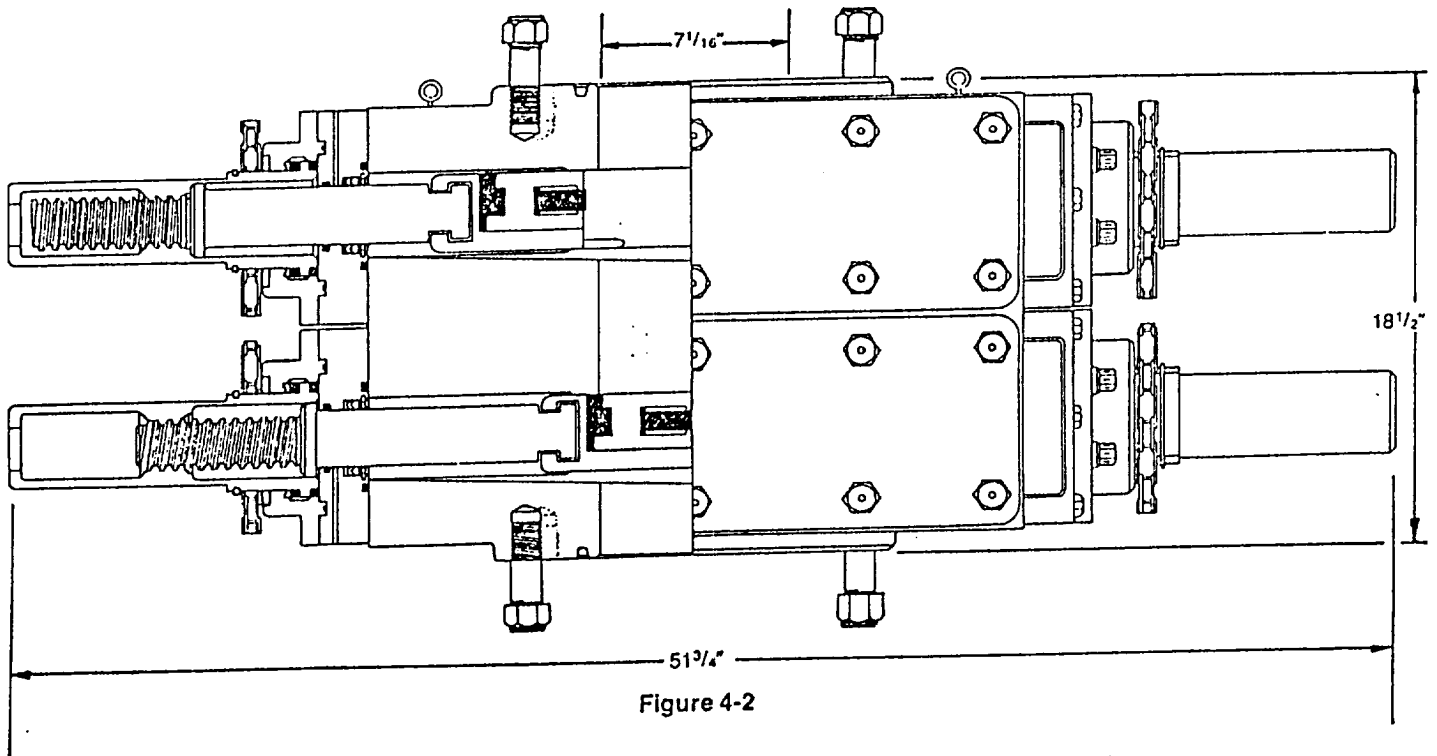
Form C-102
Supersedes C-128
Effective 1-1-65

Operator Marbob Energy Corp.		Lease Holder CB		Well No. 4
Tract Letter E	Section 17	Township 17-S	Range 30-E	County Eddy
Actual Footage Location of Well: 2310 feet from the North line and 330 feet from the West line				
Ground Level Elev. 3646.0	Producing Formation San Andres	Pool Grayburg Jackson SR-Q-G-SA		Dedicated Acreage: 40 Acres

- No allowable will be assigned to the well until all interests have been consolidated (by communitization, unitization, forced-pooling, or otherwise) or until a non-standard unit, eliminating such interests, has been approved by the Commission.



Certificate No.	JOHN W. WEST,	676
	RONALD J. EIDSON.	3239



DIMENSIONS AND WEIGHTS

		Manual
Weight	Single (pounds)	1,272
	Double (pounds)	2,335
Overall height, less studs	Single (inches)	10
	Double (inches)	18 1/2
Overall length (inches)		51 3/4
Overall width, less handwheel (inches)		20 1/4
Opening through preventer (inches)		7 1/16
Working pressure (psi)		3,000
Test pressure (psi)		6,000
Handwheel diameter (inches)		20
Ring joint gasket API number		R-45

SUP Exhibit "E"

BLOW OUT PREVENTER
MARBOB ENERGY CORPORATION
HOLDER CB WELL NO.4
SW1/4NW1/4, Sec.17-T17S--
R30E

SUPPLEMENTAL DRILLING DATA

MARBOB ENERGY CORPORATION
WELL #4 HOLDER CB
SW1/4NW1/4, SEC.17-17S-30E
EDDY COUNTY, NEW MEXICO
(DEVELOPMENT WELL)

1. SURFACE FORMATION: Quaternary.

2. ESTIMATED TOPS OF GEOLOGIC MARKERS:

Salt	540'	Queen	2022'
Base Salt	970'	Grayburg	2422'
Yates	1156'	San Andres	2712'
Seven Rivers	1500'	Glorietta	4110'

3. ANTICIPATED POROSITY ZONES:

Water	Above 300'
Oil	2027'-5000'

4. CASING DESIGN:

SIZE	INTERVAL	WEIGHT	GRADE	JOINT	CONDITION
8 5/8"	0-450'	24.0#	K-55	STC	New
5 1/2"	0-5000'	17.0#	K-55	STC	New

5. SURFACE CONTROL EQUIPMENT: A double ram-type or annular BOP will be used. (See diagram attached as Exhibit "E")

6. CIRCULATING MEDIUM:

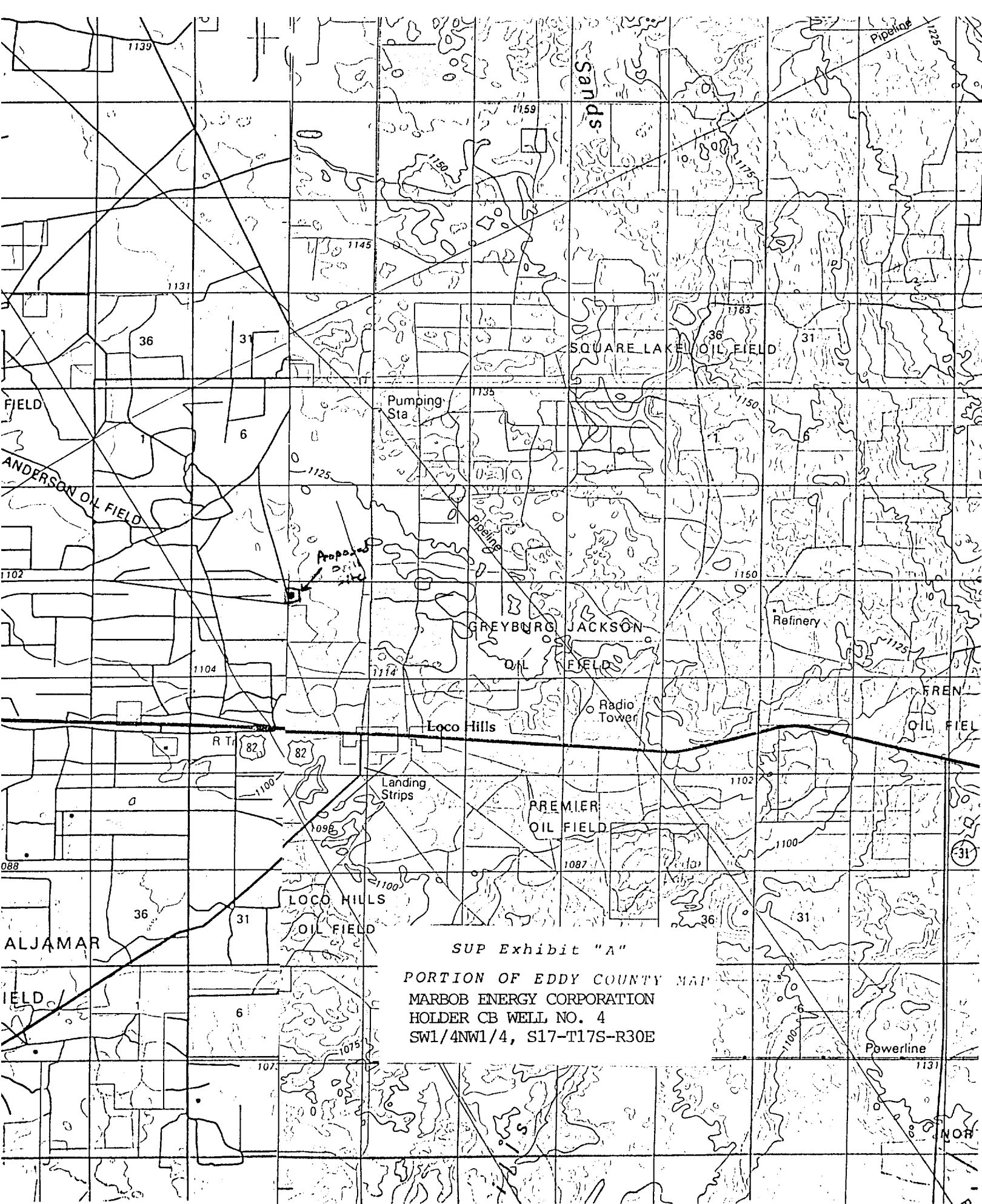
0 - 450'	Fresh water mud with gel or lime as needed for viscosity control.
450' - 5000'	Salt water mud, conditioned as necessary for control of viscosity and water loss or gain.

7. AUXILIARY EQUIPMENT: Drill string safety valve.

8. LOGGING PROGRAM: CNL-FDC W/GR Log will be run to TD.

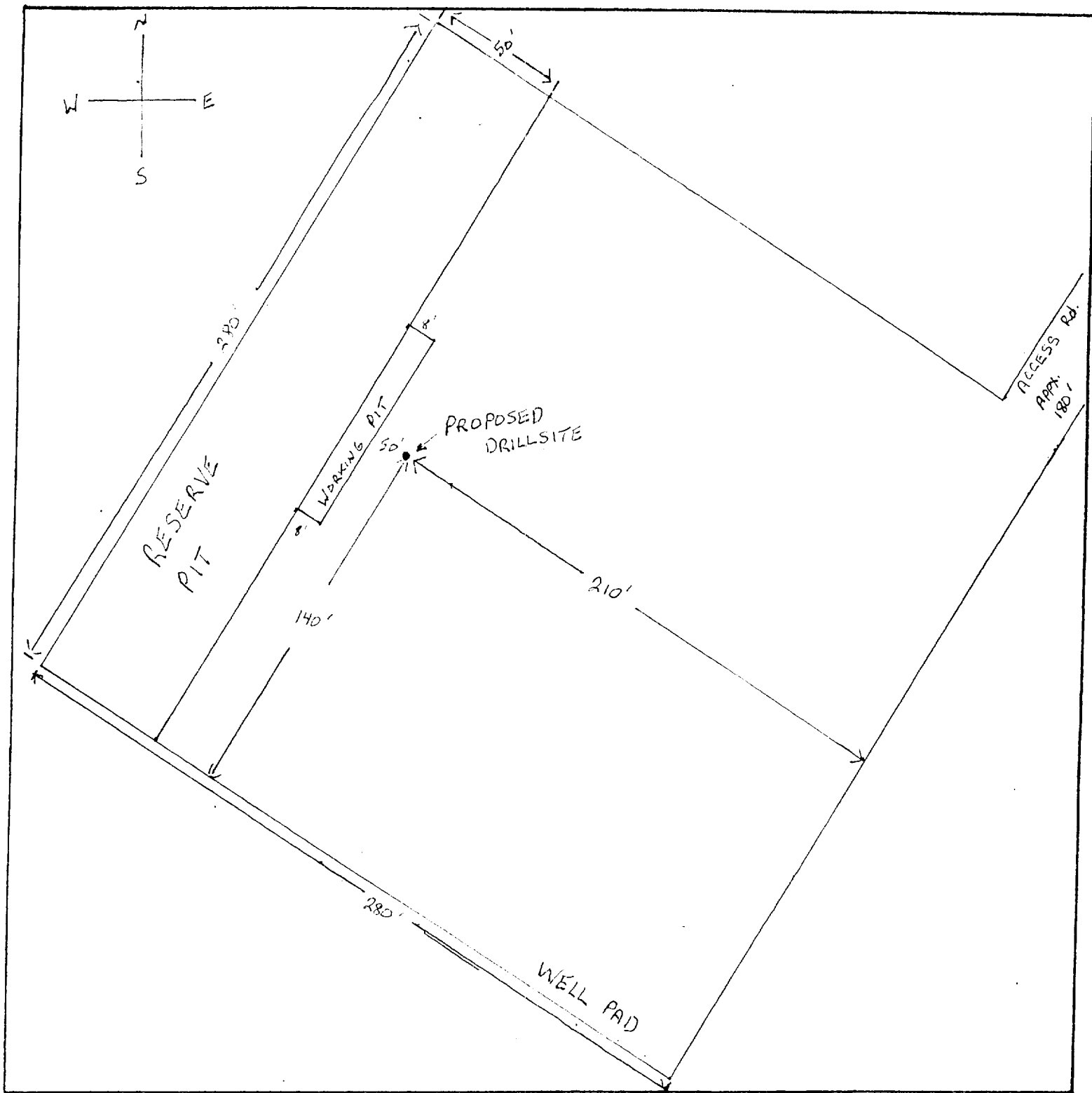
9. ABNORMAL PRESSURES, TEMPERATURES OR GASES: A water flow may be encountered in the salt section.

10. ANTICIPATED STARTING DATE: It is planned that operations will commence about November 26, 1987. Duration of drilling, testing and completion operations should be one to four weeks.



SUP Exhibit "A"

PORTION OF EDDY COUNTY MAP
MARBOB ENERGY CORPORATION
HOLDER CB WELL NO. 4
SW1/4NW1/4, S17-T17S-R30E



LEGEND

1cm = 20 ft.

SUP Exhibit "D"

SKETCH OF PROPOSED WELL PAD
MARBOB ENERGY CORPORATION
HOLDER CB WELL NO. 4
SW1/4NW1/4, Sec.17-T17S-R30E