

UNITED STATES
DEPARTMENT OF THE INTERIOR
BUREAU OF LAND MANAGEMENT

SUBMIT IN DUPLICATE
(Other instructions on
reverse side)

30-015-25974 0/5F
Form approved.
Budget Bureau No. 1004-0136
Expires August 31, 1985

APPLICATION FOR PERMIT TO DRILL, DEEPEN, OR PLUG BACK

1. TYPE OF WORK

DRILL ☒

DEEPEN ☐

PLUG BACK ☐

b. TYPE OF WELL

OIL
WELL ☒

GAS
WELL ☐

OTHER

SINGLE
ZONE ☐

MULTIPLE
ZONE ☐

2. NAME OF OPERATOR

Hondo Oil & Gas Company

3. ADDRESS OF OPERATOR

P. O. Box 2208, Roswell, NM 88202

4. LOCATION OF WELL (Report location clearly and in accordance with any State requirements.)

At surface
1980' FSL & 1780' FWL
At proposed prod. zone

SEP 01 '88

O. C. D.

ARTESIAN OFFICE

14. DISTANCE IN MILES AND DIRECTION FROM NEAREST TOWN OR POST OFFICE*

7 miles northeast of Loco Hills, NM

10. DISTANCE FROM PROPOSED*

LOCATION TO NEAREST
PROPERTY OR LEASE LINE, FT.
(Also to nearest drlg. unit line, if any)

1780'

16. NO. OF ACRES IN LEASE

1885

17. NO. OF ACRES ASSIGNED
TO THIS WELL

40

18. DISTANCE FROM PROPOSED LOCATION*
TO NEAREST WELL, DRILLING, COMPLETED,
OR APPLIED FOR, ON THIS LEASE, FT.

1320'

19. PROPOSED DEPTH

3700'

20. ROTARY OR CABLE TOOLS

Rotary

21. ELEVATIONS (Show whether DF, RT, GR, etc.)

3757' GL

22. APPROX. DATE WORK WILL START*

23.

PROPOSED CASING AND CEMENTING PROGRAM

SIZE OF HOLE	SIZE OF CASING	WEIGHT PER FOOT	SETTING DEPTH	QUANTITY OF CEMENT
12 1/4"	8 5/8"	24#	400	500 sx. Class C w/2% CC
7 7/8"	5 1/2"	15.5#	3700	200 sx. Class C + 550 sx. Lite

Mud Program:

0' - 400' Drill with fresh water.
400' - 3700' Drill with brine water.

BOP Program:

Will install on the 8 5/8" surface casing a 10" Series 900 Type "E" Shaffer
Double Hydraulic BOP and will test before drilling into the Queen formation.

Post ID #1
NL&API
9-9-88

IN ABOVE SPACE DESCRIBE PROPOSED PROGRAM: If proposal is to deepen or plug back, give data on present productive zone and proposed new productive zone. If proposal is to drill or deepen directionally, give pertinent data on subsurface locations and measured and true vertical depths. Give blowout preventer program, if any.

24.

SIGNED

Bruce Stollis

TITLE Production Superintendent

DATE 8/17/88

(This space for Federal or State office use)

PERMIT NO.

APPROVAL DATE

APPROVED BY

TITLE

DATE

CONDITIONS OF APPROVAL, IF ANY:

*See Instructions On Reverse Side

STATE OF NEW MEXICO
ENERGY AND MINERALS DEPARTMENT

OIL CONSERVATION DIV. ON

P. O. BOX 2088

SANTA FE, NEW MEXICO 87501

Form C-102
Revised 10-1-72

All distances must be from the outer boundaries of the Section.

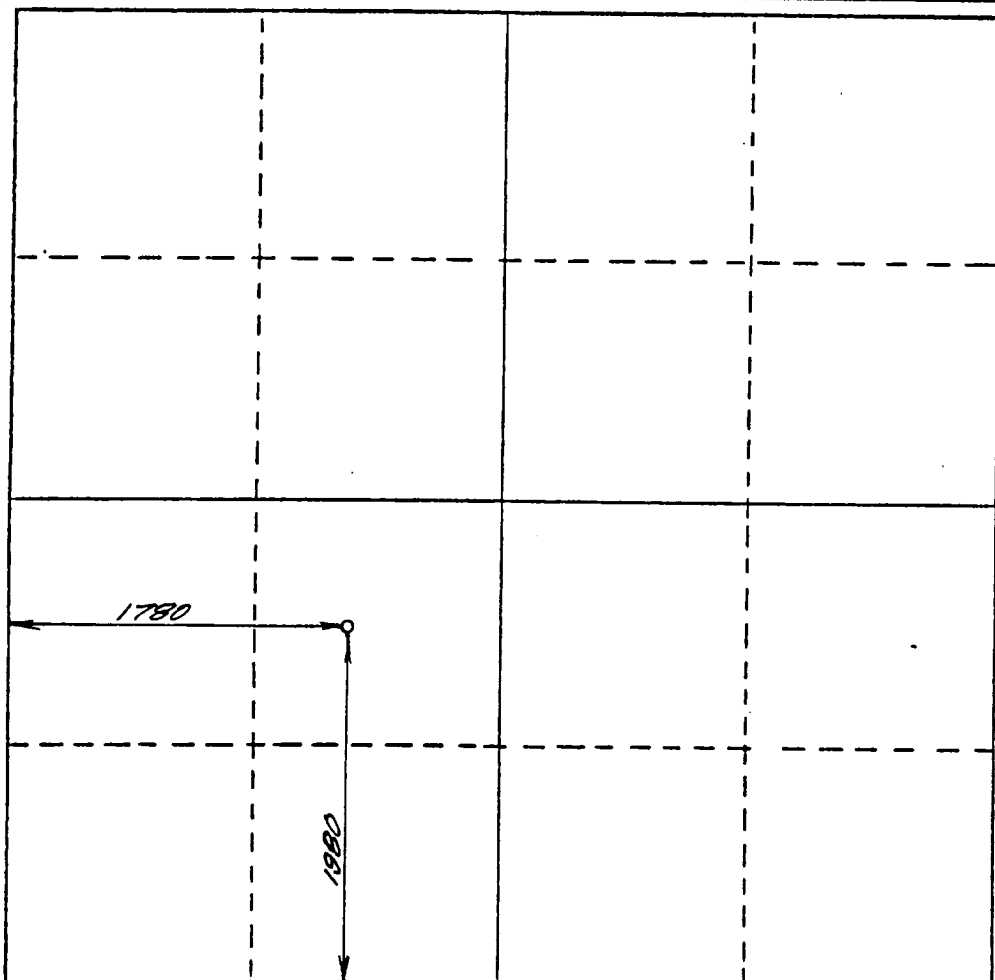
Operator Hondo Oil & Gas Company			Lease J.L. Keel "B" Federal		Well No. 42
Unit Letter K	Section 6	Township 17 South	Range 31 East	County Eddy	
Actual Footage Location of Well: 1980 feet from the South line and 1780 feet from the West line					
Ground Level Elev. 3757	Producing Formation Grayburg		Pool Grayburg Jackson		Dedicated Acreage: 40 Acres

1. Outline the acreage dedicated to the subject well by colored pencil or hatchure marks on the plat below.
2. If more than one lease is dedicated to the well, outline each and identify the ownership thereof (both as to working interest and royalty).
3. If more than one lease of different ownership is dedicated to the well, have the interests of all owners been consolidated by communitization, unitization, force-pooling, etc?

☐ Yes ☒ No If answer is "yes," type of consolidation _____

If answer is "no," list the owners and tract descriptions which have actually been consolidated. (Use reverse side of this form if necessary.) _____

No allowable will be assigned to the well until all interests have been consolidated (by communitization, unitization, forced-pooling, or otherwise) or until a non-standard unit, eliminating such interests, has been approved by the Division.



0 330 660 990 1320 1650 1980 2310 2640 2970 3300 3630 3960 4290 4620 4950 5280 5610 5940 6270 6600

CERTIFICATION

I hereby certify that the information contained herein is true and complete to the best of my knowledge and belief.

Bruce Stubbs

Name
Bruce Stubbs

Position
Production Superintendent

Company
Hondo Oil & Gas Company

Date
8/17/88

I hereby certify that the well location shown on this plat was plotted from field notes of actual surveys made by me or under my supervision, and that the same is true and correct to the best of my knowledge and belief.

Date Surveyed

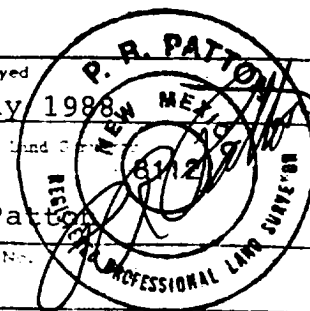
28 July 1988

Registered Land

P.R. Patton

Certificate No.

8112



BLOWOUT PREVENTER

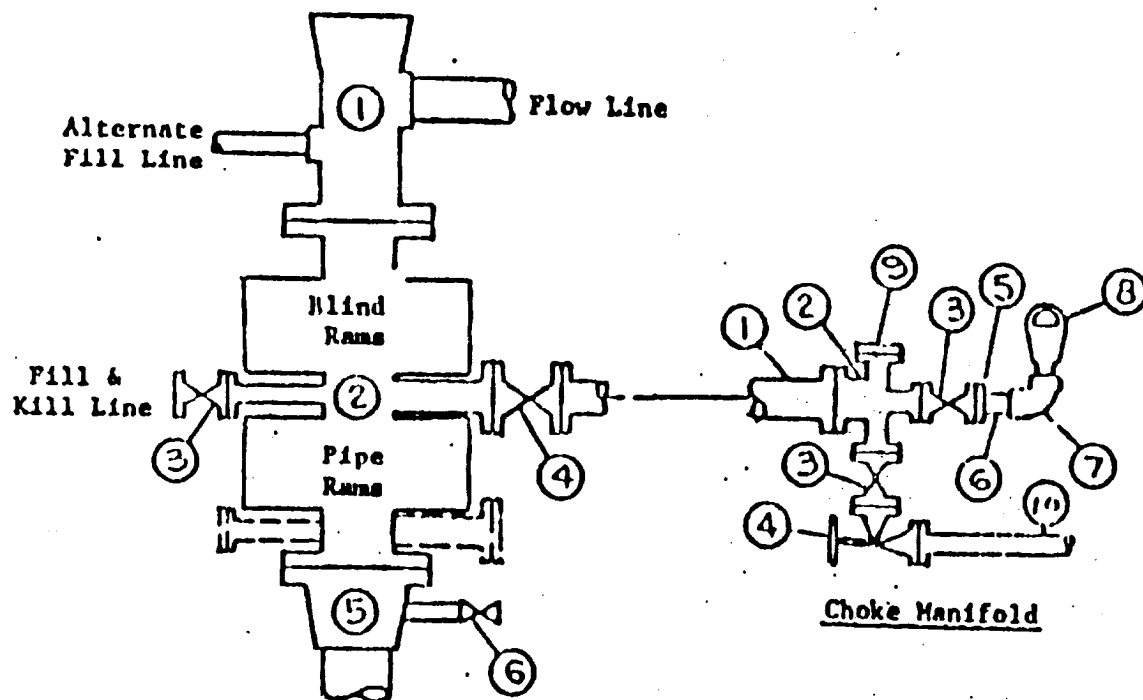


EXHIBIT "D"
Hondo Oil & Gas Company
J. L. Keel "B" Well No. 42
BOP Diagram

APPLICATION FOR DRILLING

HONDO OIL & GAS COMPANY
J. L. KEEL "B", Well No. 42
1980' FSL & 1780' FWL, Sec.6-T17S-R31E
Eddy County, New Mexico
Lease No.: LC-029435-B
(Development Well)

In conjunction with Form 9-331C, Application for Permit to Drill subject well, Hondo Oil & Gas Company submits the following items of pertinent information in accordance with BLM requirements:

1. The geologic surface formation is recent Permian with quaternary alluvium and other surficial deposits.
2. The estimated tops of geologic markers are as follows:

Rustler Anhydrite	370'	Grayburg	2800'
Top of Salt	560'	Premier Sand	2965'
Base of Salt	1360'	San Andres	3115'
Yates	1490'	Lovington Sand	3205'
Seven Rivers	1780'	Lower S.A. "M"	3265'
Queen	2380'	T. D.	3700'
3. The estimated depths at which water, oil or gas formations are anticipated to be encountered:

Water: Random fresh water from surface to 280' +/-, and water flow from injection wells possible at around 2325'.

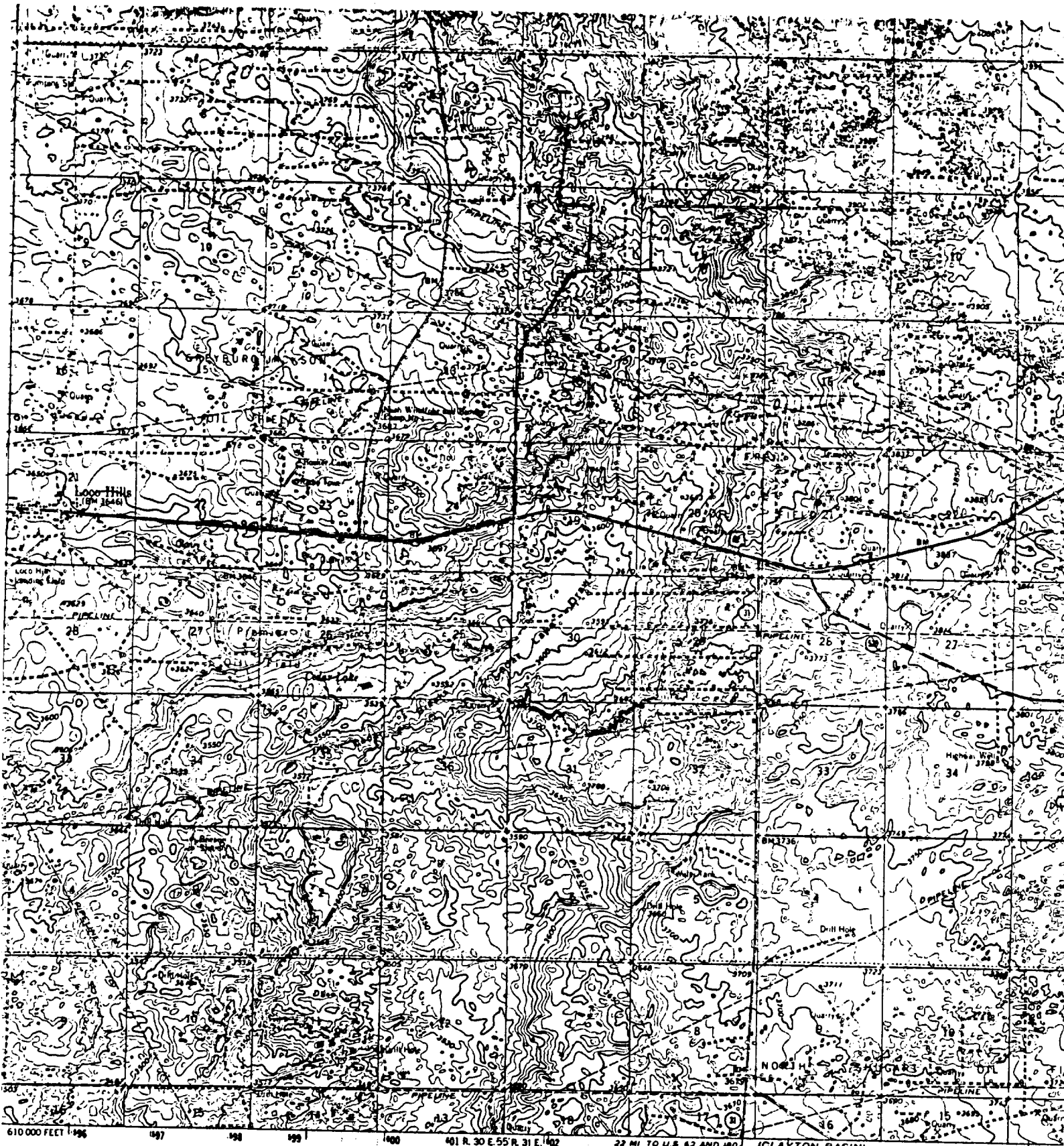
Oil: Grayburg at approximately 2800' or below.

Gas: None anticipated.
4. Proposed Casing Program: See Form 9-331C.
5. Proposed Control Equipment: See Form 9-331C and Exhibit "D".
6. Mud Program: See Form 9-331C.
7. Auxiliary Equipment: Blowout preventer, gas detector, kelly cock, pit level monitor, flow sensors and stabbing valve.
8. Testing, Logging and Coring Program:

Drill Stem Tests: None planned.

Logging: LDT/CNL T.D. - 1360'
DLL RXO NGT. T.D. - 1360'
GRN T.D. - Surface

Coring: None planned.
9. No abnormal pressures or temperatures are anticipated. In the event abnormal pressures are encountered, the proposed mud program will be modified to increase the mud weight.
10. Anticipated starting date: 9/3/88
Anticipated completion of drilling operations: approximately 10 days



1 published by the Geological Survey
USGS

metric methods from aerial photographs
by planimetric surveys 1963
7 North American datum
New Mexico coordinate system, east zone
reverse Mercator grid ticks.

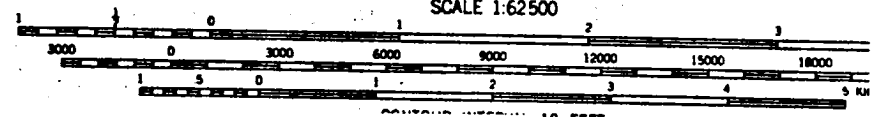
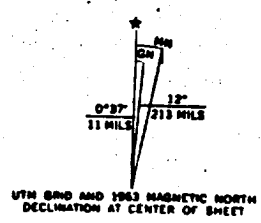


EXHIBIT "A"
Hondo Oil & Gas Company
J. L. Keel "B" Well No. 42
1980' FSL & 1780' FWL, Sec. 6-T17S-R31E
Paved Highway
Existing Access Road

WASHINGTON 25, D.C.
REQUEST

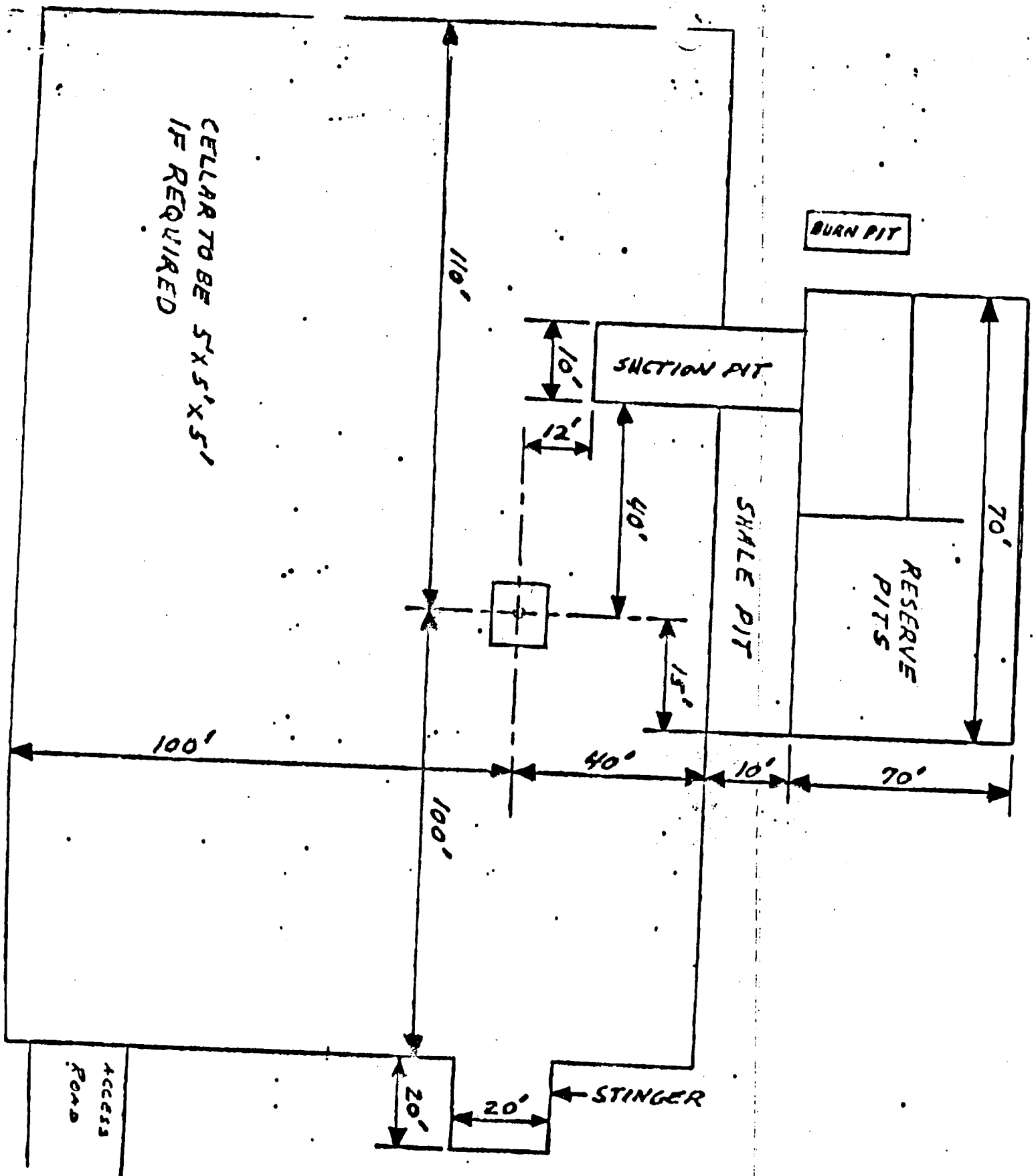


EXHIBIT "C"
 Hondo Oil & Gas Company
 J. L. Keel "B" Well No. 42
 Rig Layout