

UNITED STATES
DEPARTMENT OF THE INTERIOR
GEOLOGICAL SURVEY

SUBMIT IN TRIPLICATE*
(Other instructions on reverse side)

Form approved.
Budget Bureau No. 42-R1425.

30-115-25981

APPLICATION FOR PERMIT TO DRILL, DEEPEN, OR PLUG BACK

1a. TYPE OF WORK

DRILL ☒

DEEPEN ☐

PLUG BACK ☐

b. TYPE OF WELL

OIL WELL ☒

GAS WELL ☐

OTHER

SINGLE ZONE ☒

MULTIPLE ZONE ☐

2. NAME OF OPERATOR

Marbob Energy Corporation

3. ADDRESS OF OPERATOR

P.O. Drawer 217, Artesia, NM 88210

4. LOCATION OF WELL (Report location clearly and in accordance with any State requirements)
At surface

990 FNL 2310 FWL
At proposed prod. zone
Same

14. DISTANCE IN MILES AND DIRECTION FROM NEAREST TOWN OR POST OFFICE*

28 air miles east of Artesia, NM 88210

15. DISTANCE FROM PROPOSED*

LOCATION TO NEAREST PROPERTY OR LEASE LINE, FT.
(Also to nearest drlg. unit line, if any) 990'

18. DISTANCE FROM PROPOSED LOCATION* TO NEAREST WELL, DRILLING, COMPLETED, OR APPLIED FOR, ON THIS LEASE, FT. 330'

16. NO. OF ACRES IN LEASE

280

19. PROPOSED DEPTH

5500'

17. NO. OF ACRES ASSIGNED TO THIS WELL

40

20. ROTARY OR CABLE TOOLS

Rotary

21. ELEVATIONS (Show whether DF, RT, GR, etc.)

3714.3

22. APPROX. DATE WORK WILL START*

9/5/88

23.

PROPOSED CASING AND CEMENTING PROGRAM

SIZE OF HOLE	SIZE OF CASING	WEIGHT PER FOOT	SETTING DEPTH	QUANTITY OF CEMENT
12 1/4"	8 5/8"	24#	350'	Sufficient to circulate
7 7/8"	5 1/2"	17#	5500'	1500 sx, tie back to surf csq.

Pay zone will be selectively perforated and stimulated as needed for optimum production.

Attached are: 1. Location & acreage dedication plat
2. Supplemental drilling data
3. Surface use plan

Post ID #1
NL & API
9-16-88

IN ABOVE SPACE DESCRIBE PROPOSED PROGRAM: If proposal is to deepen or plug back, give data on present productive zone and proposed new productive zone. If proposal is to drill or deepen directionally, give pertinent data on subsurface locations and measured and true vertical depths. Give blowout preventer program, if any.

24.

SIGNED

Rhonda Nelson

TITLE Production Clerk

DATE 8/2/88

(This space for Federal or State office use)

PERMIT NO.

APPROVAL DATE

APPROVED BY

TITLE

DATE

CONDITIONS OF APPROVAL, IF ANY:

NEW MEXICO OIL CONSERVATION COMMISSION
WELL LOCATION AND ACREAGE DEDICATION PLAT

Form C-122
Supersedes C-128
Effective 1-1-85

All distances must be from the outer boundaries of the Section

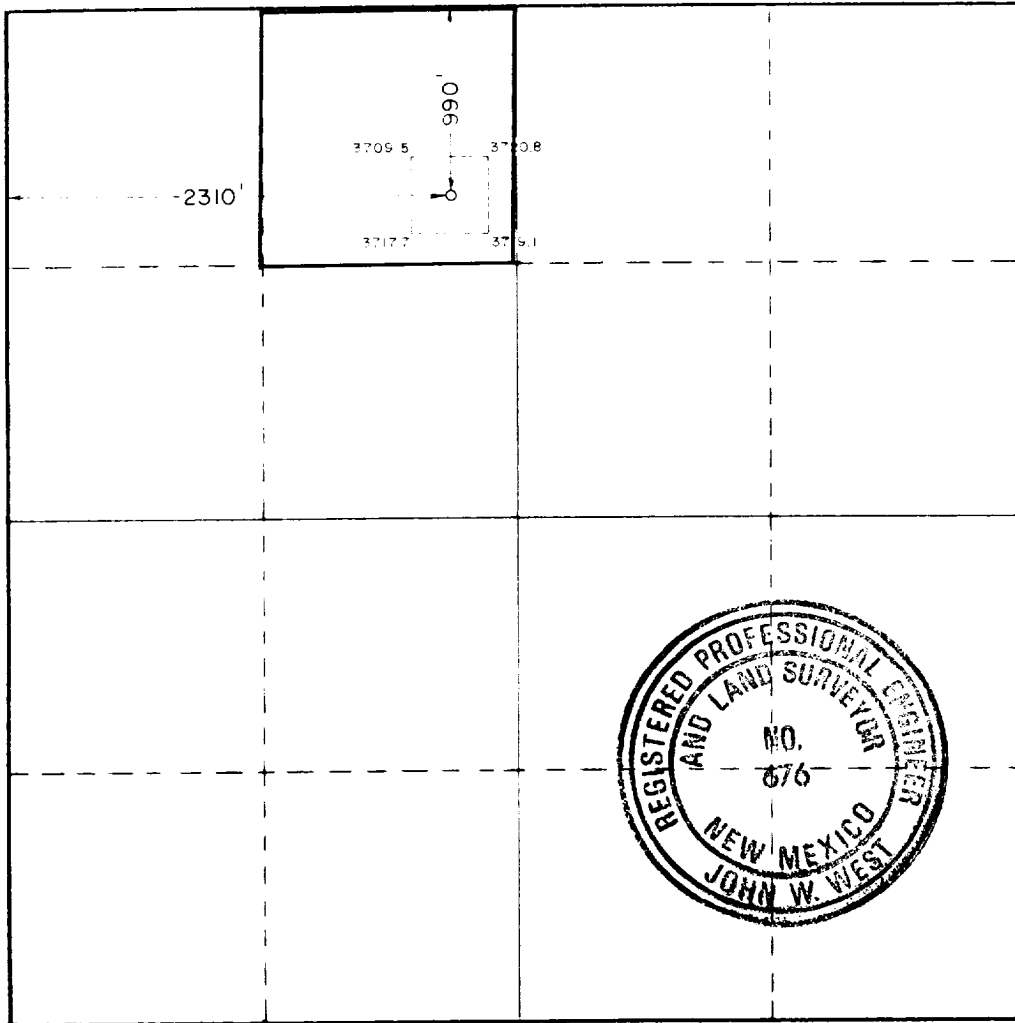
Operator Marbob Energy Corp		Lease Foster Eddy		Well No.	
Tract Letter C	Section 17	Township 17 South	Range 31 East	County Eddy	
Actual Postage Location of Well: feet from the north line and 2310 feet from the west line					
Ground Level Elev. 3714.3	Producing Formation San Andres		Pool Grbg Jackson SR Q Grbg SA	Estimated Acreage 40 Acres	

1. Outline the acreage dedicated to the subject well by colored pencil or hachure marks on the plat below.
2. If more than one lease is dedicated to the well, outline each and identify the ownership thereof (both as to working interest and royalty).
3. If more than one lease of different ownership is dedicated to the well, have the interests of all owners been consolidated by communitization, unitization, force-pooling, etc?

☐ Yes ☐ No If answer is "yes," type of consolidation _____

If answer is "no," list the owners and tract descriptions which have actually been consolidated. (Use reverse side of this form if necessary.) _____

No allowable will be assigned to the well until all interests have been consolidated (by communitization, unitization, forced-pooling, or otherwise) or until a non-standard unit, eliminating such interests, has been approved by the Commission.



CERTIFICATION

I hereby certify that the information contained herein is true and complete to the best of my knowledge and belief.

Rhonda Nelson
Name

Rhonda Nelson

Position

Production Clerk

Company

Marbob Energy Corporation

Date

August 2, 1988

I hereby certify that the well location shown on this plat was plotted from field notes of actual surveys made by me or under my supervision, and that the same is true and correct to the best of my knowledge and belief.

Date Surveyed

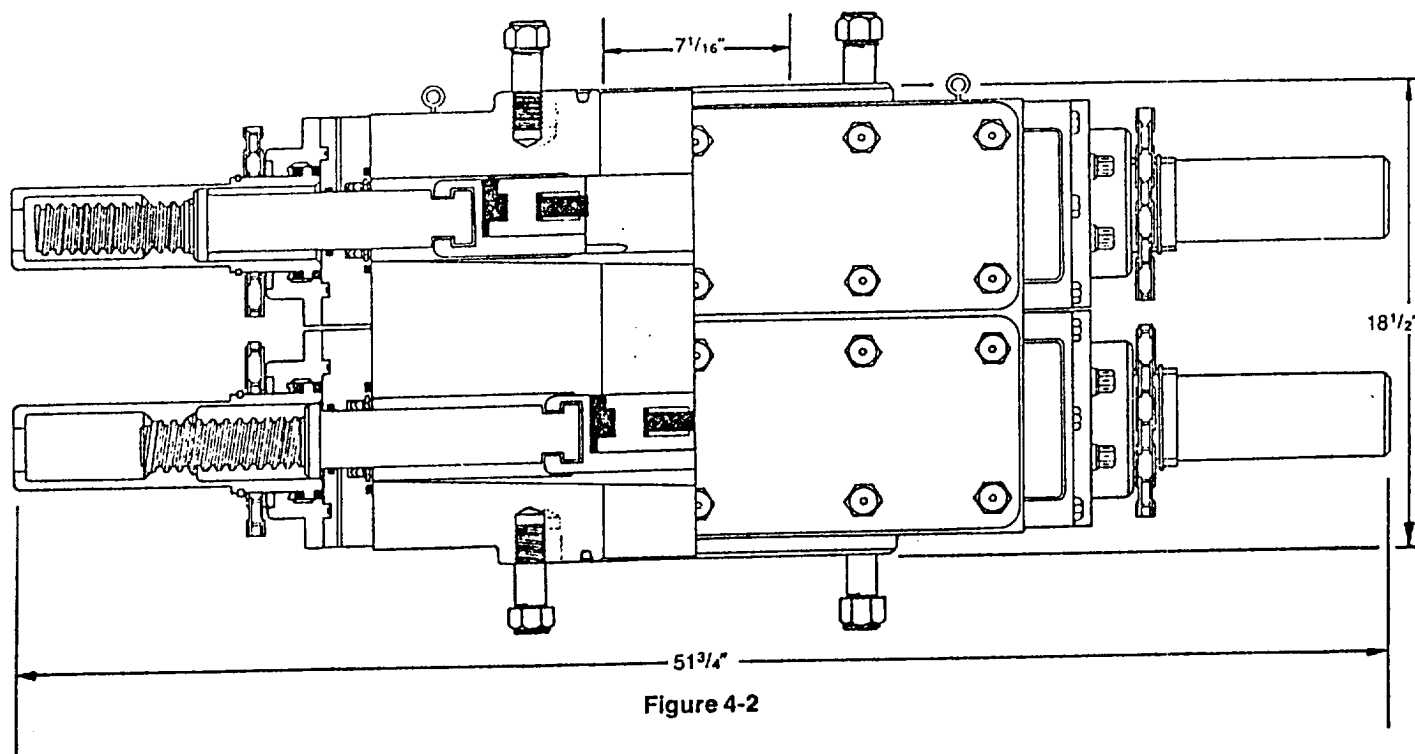
July 21, 1988

Registered Professional Engineer and or Land Surveyor

John W. West

Certificate No. JOHN W. WEST, 676

RONALD J. EIDSON, 3239



DIMENSIONS AND WEIGHTS

		Manual
Weight	Single (pounds)	1,272
	Double (pounds)	2,335
Overall height, less studs	Single (inches)	10
	Double (inches)	18 1/2
Overall length (inches)		51 3/4
Overall width, less handwheel (inches)		20 1/4
Opening through preventer (inches)		7 1/16
Working pressure (psi)		3,000
Test pressure (psi)		6,000
Handwheel diameter (inches)		20
Ring joint gasket API number		R-45

SUP Exhibit "E"

Sketch of Blow-out Preventor
Marbob Energy Corporation
Foster Eddy No.6
NE/4 NW/4, Sec.17-17S-31E
Eddy County, New Mexico

SUPPLEMENTAL DRILLING DATA

MARBOB ENERGY CORPORATION
WELL #6 FOSTER EDDY FEDERAL
NE/4 NW/4 SEC. 17-17S-31E
EDDY COUNTY, NEW MEXICO
(DEVELOPMENT WELL)

1. SURFACE FORMATION: Quaternary.

2. ESTIMATED TOPS OF GEOLOGIC MARKERS:

Salt	385'	Queen	2430'
Base Salt	1100'	Grayburg	2804'
Seven Rivers	1340'	San Andres	3134'

3. ANTICIPATED POROSITY ZONES:

Water	Above 180'
Oil	2950 - 5500'

4. CASING DESIGN:

SIZE	INTERVAL	WEIGHT	GRADE	JOINT	CONDITION
8 5/8"	0-350'	24.0#	K-55	STC	New
5 1/2"	0-5500'	17.0#	K-55	STC	New

5. SURFACE CONTROL EQUIPMENT: A double ram-type or annular BOP will be used. (See diagram attached as Exhibit "E")

6. CIRCULATING MEDIUM:

0 - 385' Fresh water mud with gel or lime as needed for viscosity control.

385'- 5500' Salt water mud, conditioned as necessary for control of viscosity and water loss or gain.

7. AUXILIARY EQUIPMENT: Drill string safety valve.

8. LOGGING PROGRAM: CNL-FDC W/GR Log will be run to TD.

9. ABNORMAL PRESSURES, TEMPERATURES OR GASES: A water flow may be encountered in the salt section.

10. ANTICIPATED STARTING DATE: It is planned that operations will commence about September 5, 1988. Duration of drilling, testing and completion operations should be one to four weeks.

500 000 FEET
(TEXT)

T 17 S

363

650

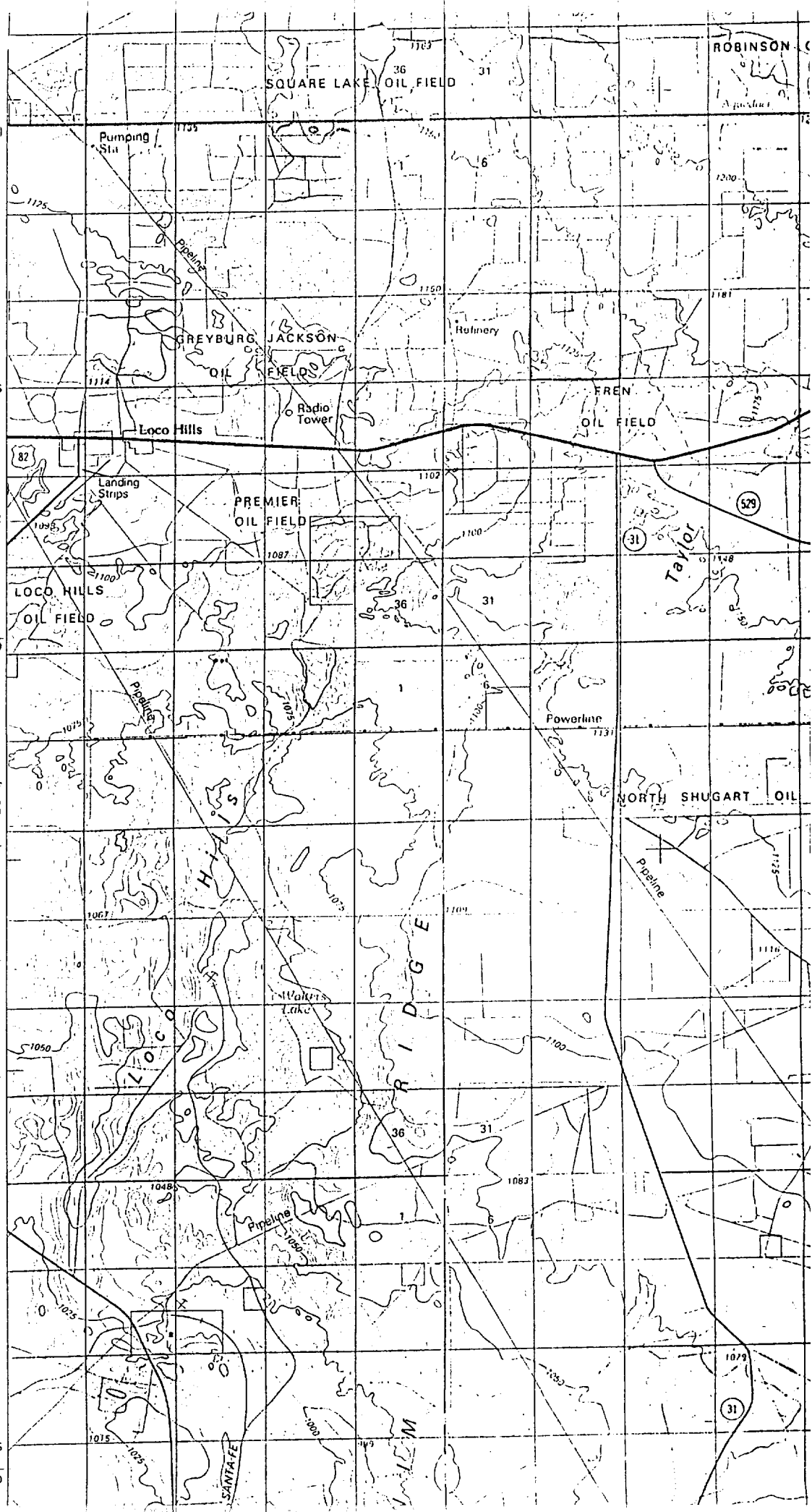
(ARTESIA)

T 18 S

362

T 19 S

600



UNITED STATES
DEPARTMENT OF THE INTERIOR
BUREAU OF LAND MANAGEMENT

(ROSWELL)

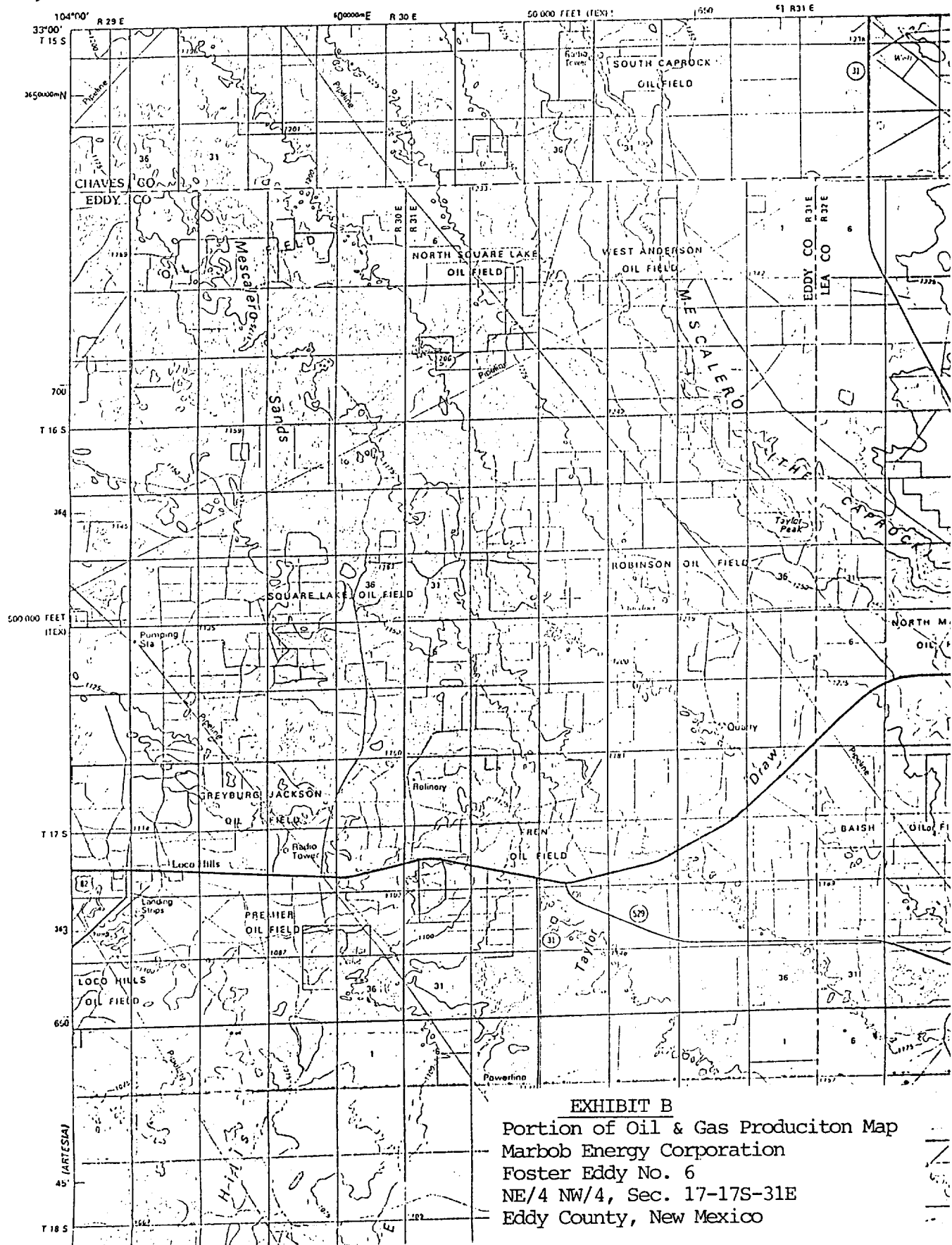
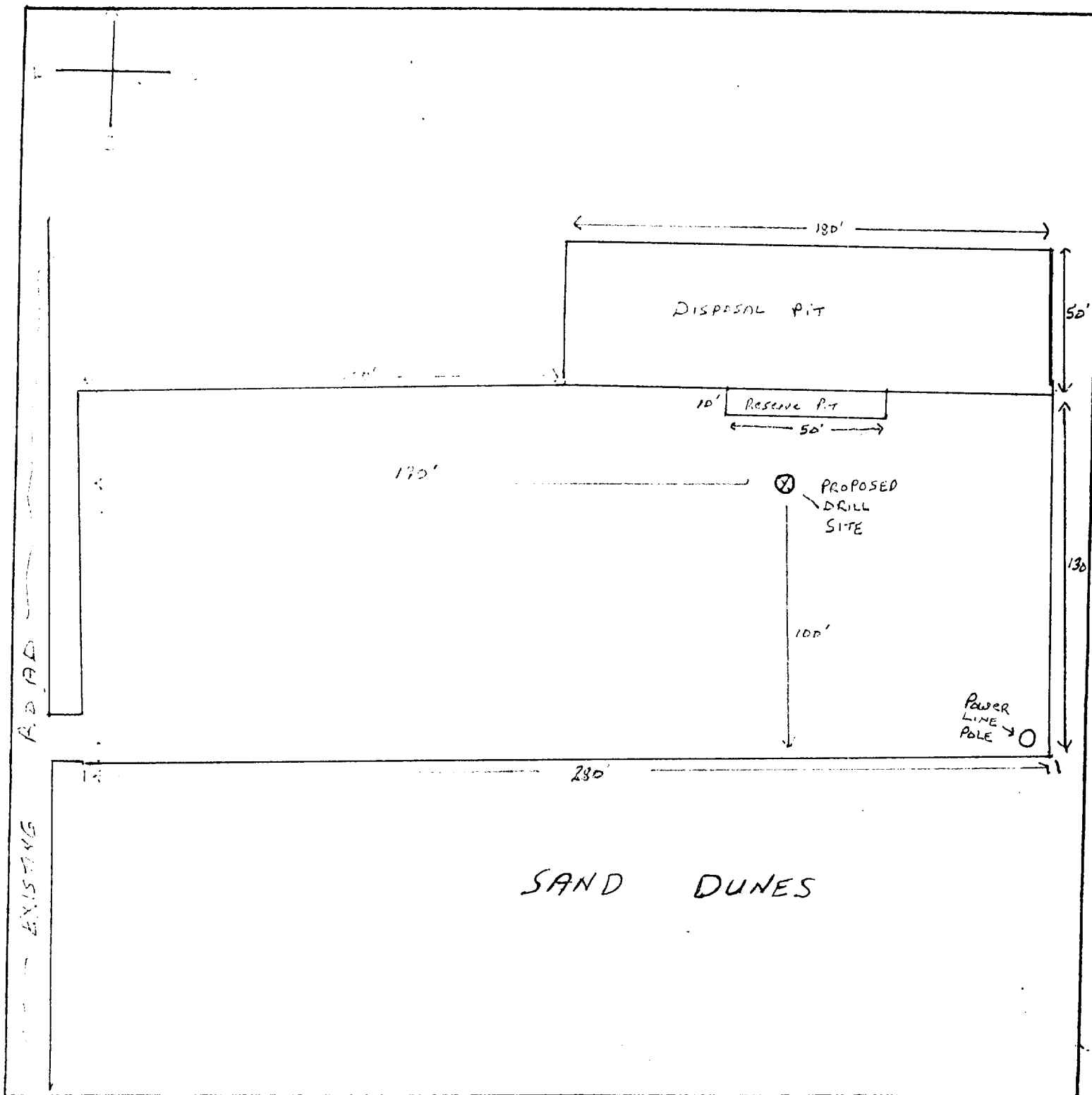


EXHIBIT B

Portion of Oil & Gas Production Map
Marbob Energy Corporation
Foster Eddy No. 6
NE/4 NW/4, Sec. 17-17S-31E
Eddy County, New Mexico



LEGEND

1cm = 20 ft.

SUP Exhibit "D"

SKETCH OF PROPOSED WELL PAD

Marbob Energy Corporation
Foster Eddy Well #6
NE/4 NW/4, Sec.17-17S-31E
Eddy County, New Mexico