

UNITED STATES  
DEPARTMENT OF THE INTERIOR  
BUREAU OF LAND MANAGEMENT

APPLICATION FOR PERMIT TO DRILL, DEEPEN, OR PLUG BACK

1a. TYPE OF WORK

DRILL ☒

DEEPEN ☐

PLUG BACK ☐

b. TYPE OF WELL

OIL  
WELL ☒

GAS  
WELL ☐

OTHER

SINGLE  
ZONE ☐

MULTIPLE  
ZONE ☐

2. NAME OF OPERATOR

Burnett Oil Co., Inc.

SEP 19 '88

3. ADDRESS OF OPERATOR

801 Cherry St., Suite 1500, Fort Worth, TX 76102

4. LOCATION OF WELL (Report location clearly and in accordance with any State requirements.)

At surface

Unit Letter L, 1980' FSL, 660' FWL, Sec.12-17S-30E

At proposed prod. zone

Same

14. DISTANCE IN MILES AND DIRECTION FROM NEAREST TOWN OR POST OFFICE\*

3 miles NE of Loco Hills, NM

15. DISTANCE FROM PROPOSED\*

LOCATION TO NEAREST  
PROPERTY OR LEASE LINE, FT.  
(Also to nearest drlg. unit line, if any) 660'

18. DISTANCE FROM PROPOSED LOCATION\*

TO NEAREST WELL, DRILLING, COMPLETED,  
OR APPLIED FOR, ON THIS LEASE, FT. 1320'

16. NO. OF ACRES IN LEASE

80 (contiguous)

19. PROPOSED DEPTH

3550'

17. NO. OF ACRES ASSIGNED  
TO THIS WELL

40

20. ROTARY OR CABLE TOOLS

Rotary

21. ELEVATIONS (Show whether DF, RT, GR, etc.)

3750' GR 3741.8

22. APPROX. DATE WORK WILL START\*

Sept. 12, 1988

23.

PROPOSED CASING AND CEMENTING PROGRAM

SIZE OF HOLE	SIZE OF CASING	WEIGHT PER FOOT	SETTING DEPTH	QUANTITY OF CEMENT
12 1/4"	8-5/8"	24	425'	±300 sx Cl C (circulate)
7-7/8"	5 1/2"	17	3550'	±500 sx (if water flows encountered, cementing program will vary)

A 12 1/4" surface hole will be drilled to the Rustler anhydrite. 8-5/8" casing will be run and cemented to surface. After testing casing, a 7-7/8" OD hole will be drilled through the Jackson zone at ±3550'. 5 1/2" OD casing will be run and cemented back to the base of the salt at ±1250'. BOP equipment will be double ram and tested to 3000 psi before drilling out below the surface pipe.

IN ABOVE SPACE DESCRIBE PROPOSED PROGRAM: If proposal is to deepen or plug back, give data on present productive zone and proposed new productive zone. If proposal is to drill or deepen directionally, give pertinent data on subsurface locations and measured and true vertical depths. Give blowout preventer program, if any.

24.

SIGNED

John C. McPhaul

TITLE

Production Superintendent

DATE

8/15/88

(This space for Federal or State office use)

PERMIT NO.

APPROVAL DATE

Orig. Signed by

APPROVED BY

CONDITIONS OF APPROVAL, IF ANY:

TITLE

DATE

9-16-88

\*See Instructions On Reverse Side

Title 18 U.S.C. Section 1001, makes it a crime for any person knowingly and willfully to make to any department or agency of the United States any false, fictitious or fraudulent statements or representations or to any matter within its jurisdiction.

**NEW MEXICO OIL CONSERVATION COMMISSION  
WELL LOCATION AND ACREAGE DEDICATION PLAT**

Form C-102  
Supersedes C-128  
Effective 1-1-85

All distances must be from the outer boundaries of the Section

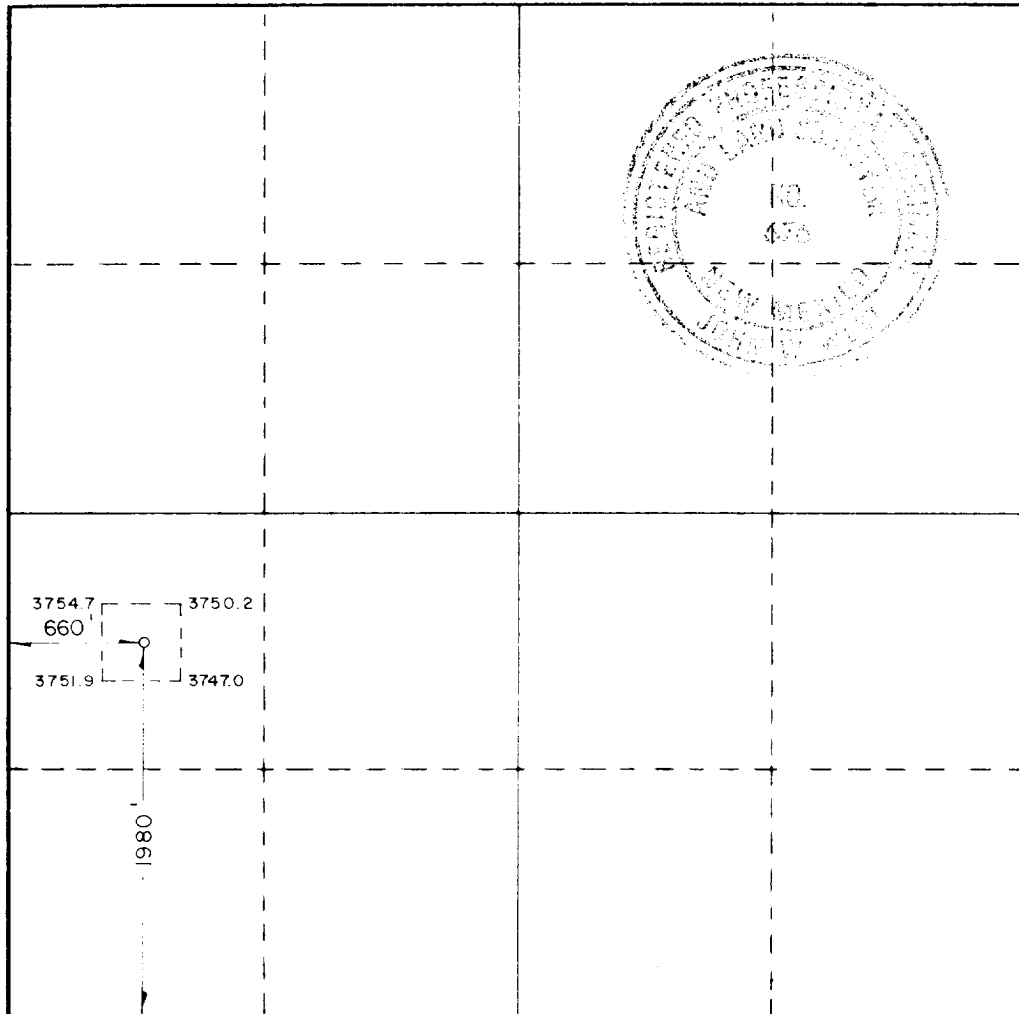
Operator <b>Barnett Oil Company, Inc.</b>			Lease <b>Gissler B</b>		Well No. <b>27</b>
Tract Letter <b>L</b>	Section <b>12</b>	Township <b>17 South</b>	Range <b>30 East</b>	County <b>Eddy County</b>	
Actual Footage Location of Well: <div style="display: flex; justify-content: space-between;"> <span>1980 feet from the</span> <span>South line and</span> <span>660 feet from the</span> <span>West line</span> </div>					
Ground Level Elev. <b>3749.8</b>	Producing Formation <b>Grayburg-Jackson</b>	Pool <b>Grayburg Jackson SR-Q-G-SA</b>	Dedicated Acreage: <b>40</b> Acres		

1. Outline the acreage dedicated to the subject well by colored pencil or hatchure marks on the plat below.
2. If more than one lease is dedicated to the well, outline each and identify the ownership thereof (both as to working interest and royalty).
3. If more than one lease of different ownership is dedicated to the well, have the interests of all owners been consolidated by communitization, unitization, force-pooling, etc?

☐ Yes    ☐ No    If answer is "yes," type of consolidation \_\_\_\_\_

If answer is "no," list the owners and tract descriptions which have actually been consolidated. (Use reverse side of this form if necessary.) \_\_\_\_\_

No allowable will be assigned to the well until all interests have been consolidated (by communitization, unitization, forced-pooling, or otherwise) or until a non-standard unit, eliminating such interests, has been approved by the Commission.



**CERTIFICATION**

*I hereby certify that the information contained herein is true and complete to the best of my knowledge and belief.*

Name John C. McPhaul

Position  
**Production Superintendent**

Company  
**Burnett Oil Co., Inc.**

Date  
**8/11/88**

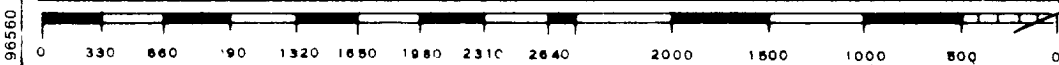
*I hereby certify that the well location shown on this plat was plotted from field notes of actual surveys made by me or under my supervision, and that the same is true and correct to the best of my knowledge and belief.*

Date Surveyed  
**August 2, 1988**

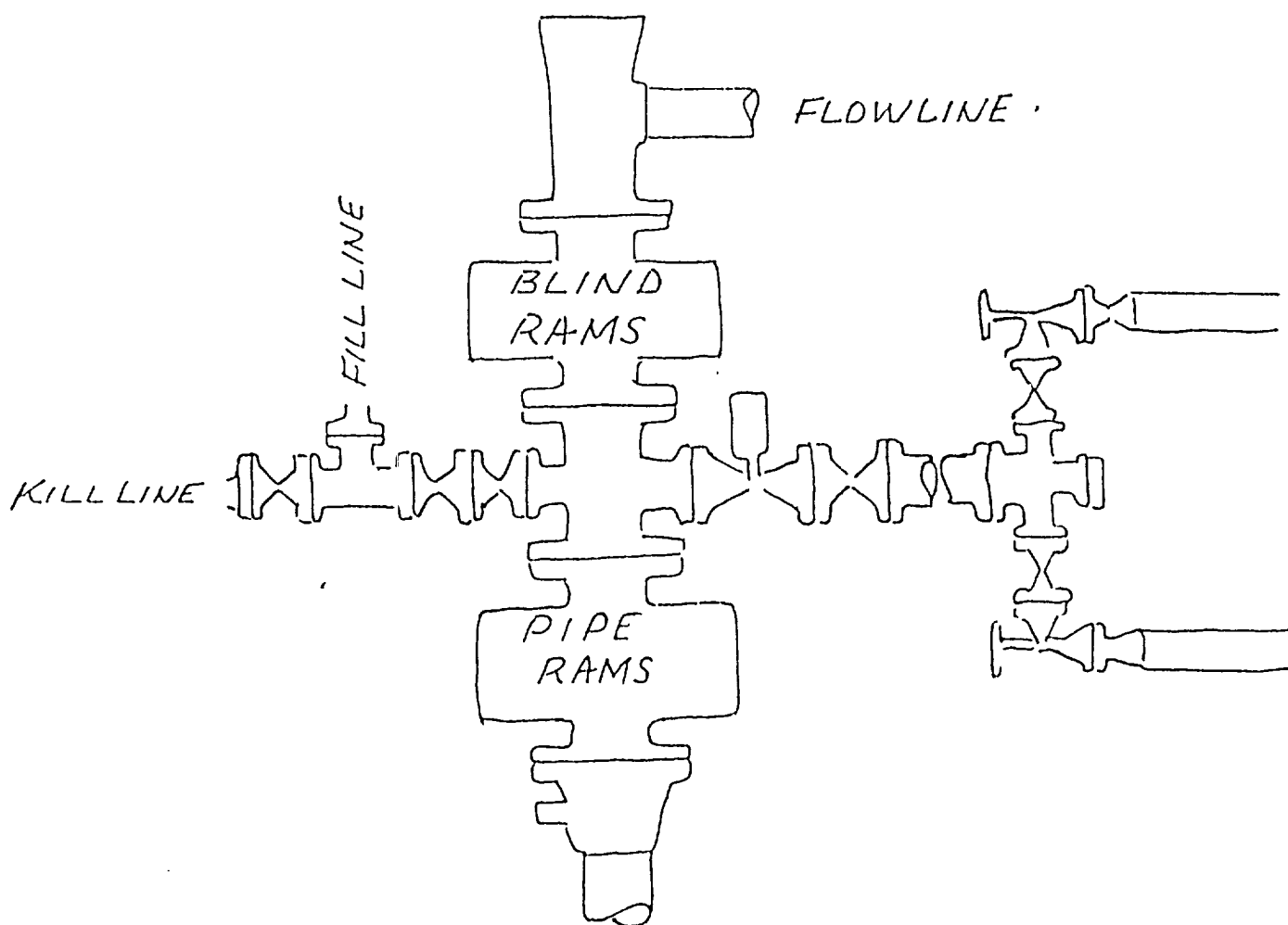
Registered Professional Engineer and/or Land Surveyor

Ronald J. Eidson

Certificate No. **JOHN W. WEST, 676**  
**RONALD J. EIDSON, 3239**



BURNETT OIL CO. INC.  
BLOWOUT PREVENTER SPECIFICATIONS  
GISSLER B 27



THE BOP AND RELATED EQUIPMENT WILL BE TESTED TO 3000 PSI  
BEFORE DRILLING OUT BELOW SURFACE PIPE.

## DRILLING PLAN

covering

BURNETT OIL CO., INC.  
Lease #LC 029338A  
Gissler "B" #27  
Unit Letter "L"  
1980' FSL, 660' FWL  
Sec. 12, T17S, R30E  
Eddy Co., New Mexico

### (A) DRILLING PROGRAM

#### (1) Estimated tops of geologic markers

Alluvium	Surface
Anhydrite	360'
Salt	450'
Base Salt	1300'
Red Sand	2270'
Grayburg	2670'
San Andres	2965'

#### (2) Estimated depths of producing formations

Fresh Water	None
Saltwater flows	(?)*
Oil & Gas	2920', 3070', 3350'**

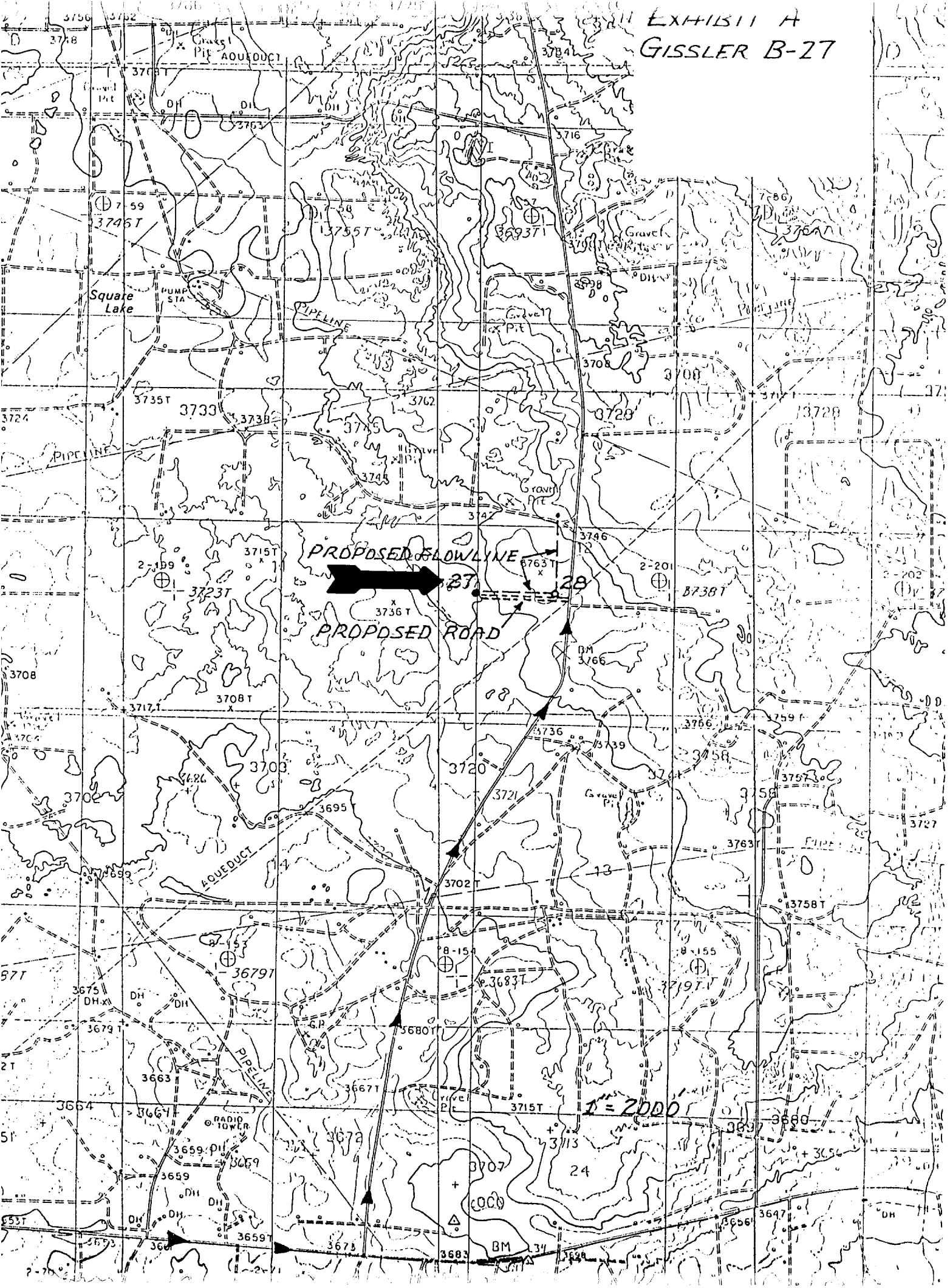
\*If large waterflows are encountered, drilling will continue to TD. Stage cementers will be run just below flows, and casing will be cemented in multiple stages in order to confine water flows to original strata.

\*\*Oil and gas bearing zones will be confined by cementing. Productive intervals will be perforated through casing and produced in a conventional manner.

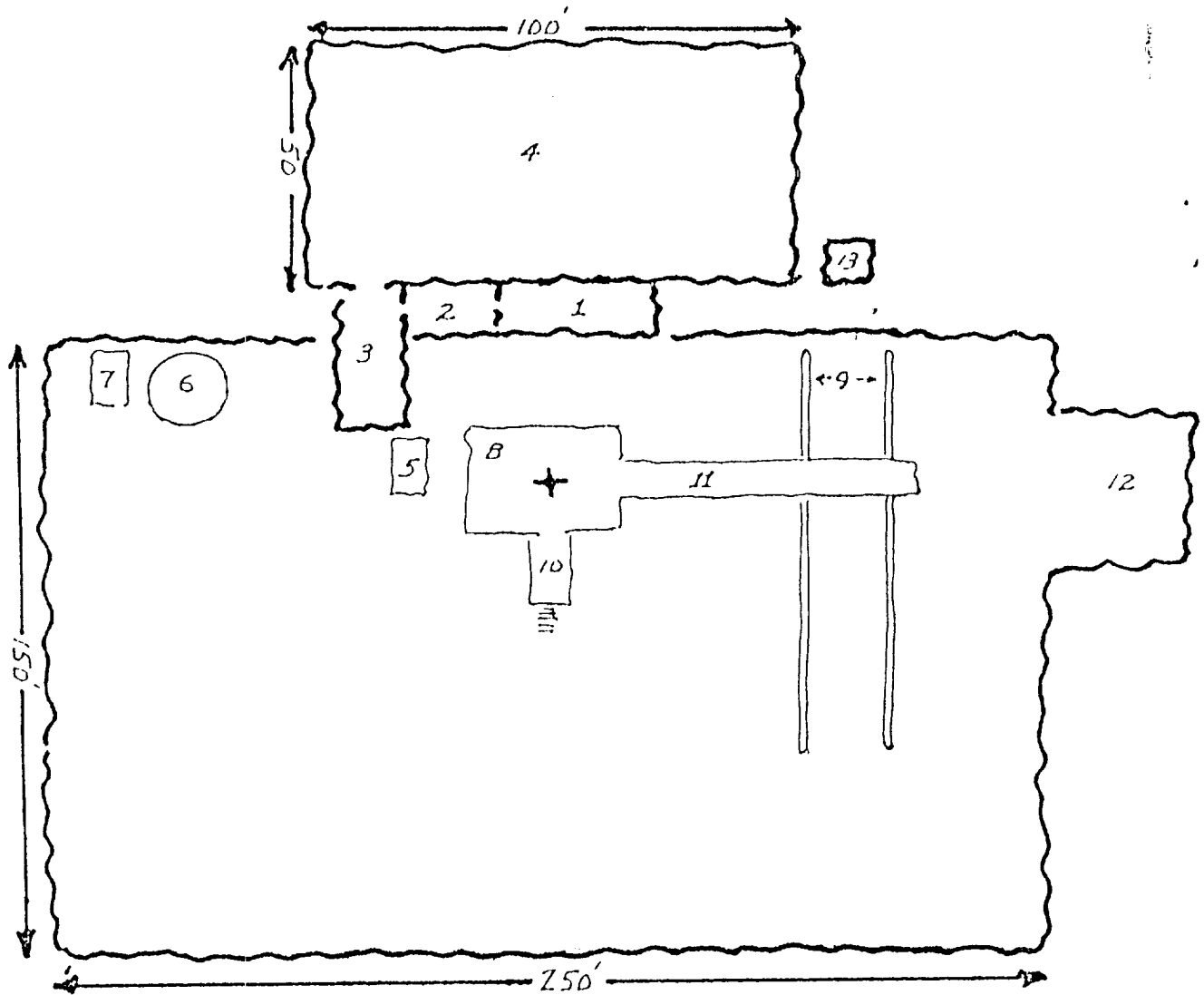
#### (3) Blowout Preventer Specifications

3000 psi Double Ram Unit with hydraulic closing equipment. The preventer will be tested before drilling out below surface pipe setting depth. The exact description of the preventer and related equipment depends upon the successful drilling contractor, who has not yet been selected. (See schematic Exhibit "D"). No high pressure hydrocarbon zones are anticipated.

EXHIBIT A  
GISSLER B-27



# PROPOSED DRILL SITE LAYOUT GISSLER B 27



- 1 SHALE PIT 30'x8'
- 2 MUD PIT 20'x8'
- 3 SUCTION PIT 30'x8'
- 4 RESERVE PIT 100'x50'
- 5 PUMP
- 6 WATER TANK

- 7 FUEL TANK
- 8 RIG
- 9 PIPERACKS
- 10 DOG HOUSE
- 11 CAT WALK
- 12 STINGER
- 13 WASTE PIT