

MEXICO OIL CONSERVATION COMM  
WELL LOCATION AND ACREAGE DEDICATION PLAT  
*REVISED*

Form C-102  
Supersedes C-128  
Effective 1-1-65

All distances must be from the outer boundaries of the Section.

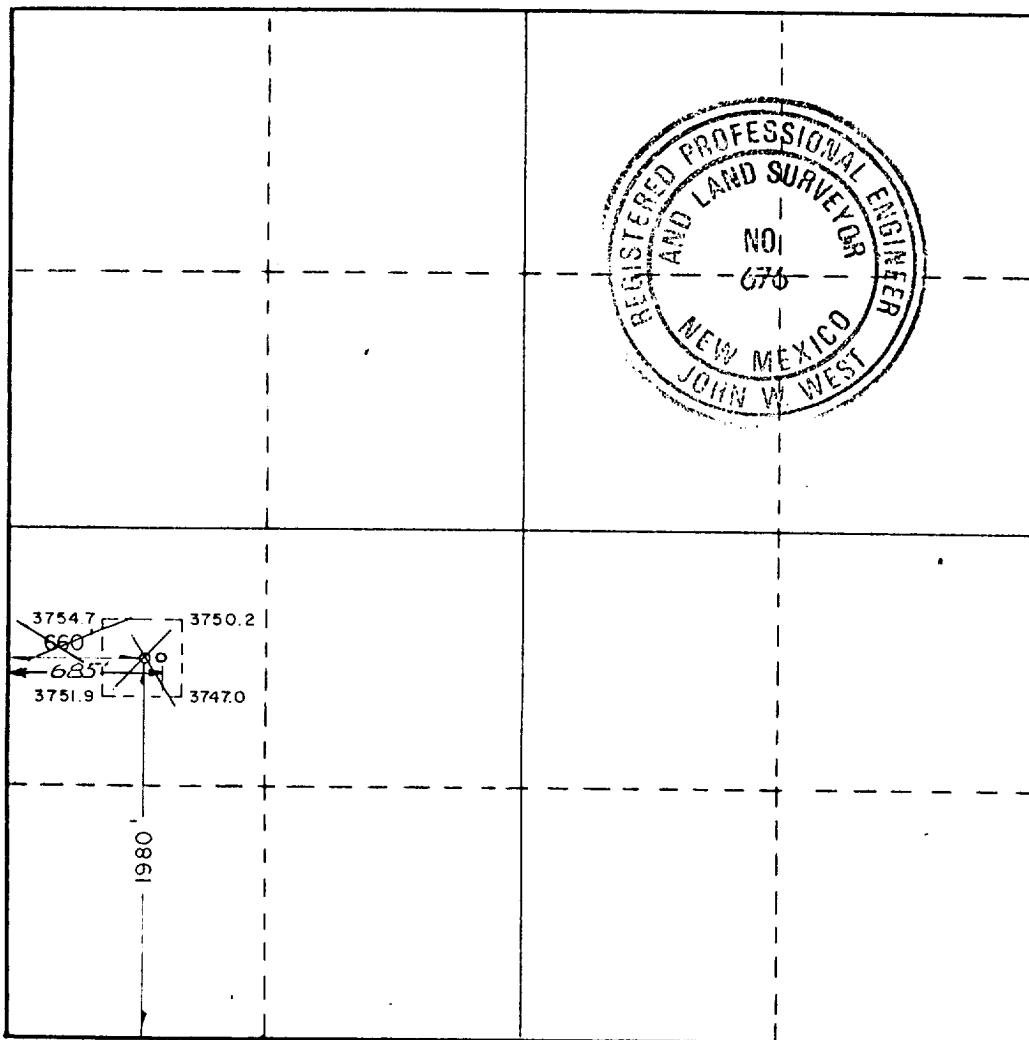
Operator Burnett Oil Company, Inc.			Lease Gissler B		Well No. 27
Unit Letter L	Section 12	Township 17 South	Range 30 East	County Eddy County	
Actual Footage Location of Well: 1980 feet from the South line and <sup>685</sup> <del>660</del> feet from the West line					
Ground Level Elev. 3749.8	Producing Formation Grayburg-Jackson	Pool Grayburg Jackson		Dedicated Acreage: 40 Acres	

1. Outline the acreage dedicated to the subject well by colored pencil or hachure marks on the plat below.
2. If more than one lease is dedicated to the well, outline each and identify the ownership thereof (both as to working interest and royalty).
3. If more than one lease of different ownership is dedicated to the well, have the interests of all owners been consolidated by communitization, unitization, force-pooling, etc?

☐ Yes ☐ No If answer is "yes," type of consolidation \_\_\_\_\_

If answer is "no," list the owners and tract descriptions which have actually been consolidated. (Use reverse side of this form if necessary.) \_\_\_\_\_

No allowable will be assigned to the well until all interests have been consolidated (by communitization, unitization, forced-pooling, or otherwise) or until a non-standard unit, eliminating such interests, has been approved by the Commission.



CERTIFICATION

I hereby certify that the information contained herein is true and complete to the best of my knowledge and belief.

Name *John C. McPhaul*

Position  
Production Superintendent

Company  
Burnett Oil Co., Inc.

Date  
8/11/88

I hereby certify that the well location shown on this plat was plotted from field notes of actual surveys made by me or under my supervision, and that the same is true and correct to the best of my knowledge and belief.

Date Surveyed  
August 2, 1988

Registered Professional Engineer and/or Land Surveyor

*John W. West*

Certificate No. JOHN W. WEST, 676  
RONALD J. EIDSON, 3239

