

Submit to Appropriate
District Office
State Lease - 6 copies
Fee Lease - 5 copies

DISTRICT I
P.O. Box 1980, Hobbs, NM 88240

DISTRICT II
P.O. Drawer DD, Artesia, NM 88210

DISTRICT III
1000 Rio Brazos Rd., Aztec, NM 87410

State of New Mexico
Energy, Minerals and Natural Resources Department

RECEIVED
OIL CONSERVATION DIVISION

P.O. Box 2088
Santa Fe, New Mexico 87504-2088

MAY - 3 '89

O. C. D.
ARTESIA, OFFICE

Form C-101
Revised 1-1-89

API NO. (assigned by OCD on New Wells)

30-015-26110

5. Indicate Type of Lease

STATE ☒ FEE ☐

6. State Oil & Gas Lease No.

B-1565

APPLICATION FOR PERMIT TO DRILL, DEEPEN, OR PLUG BACK

1a. Type of Work:

DRILL ☒ RE-ENTER ☐ DEEPEN ☐ PLUG BACK ☐

b. Type of Well:

OIL WELL ☒ GAS WELL ☐ OTHER ☐ SINGLE ZONE ☒ MULTIPLE ZONE ☐

7. Lease Name or Unit Agreement Name

Texaco "BE"

2. Name of Operator

Marbob Energy Corporation

8. Well No.

3

3. Address of Operator

P. O. Drawer 217, Artesia, NM 88210

9. Pool name or Wildcat

Grbg Jackson SR Q Grbg SA

4. Well Location

Unit Letter B : 330 Feet From The North Line and 1650 Feet From The East Line

Section 16 Township 17S Range 30E NMPM Eddy County

10. Proposed Depth

5000'

11. Formation

San Andres

12. Rotary or C.T.

Rotary

13. Elevations (Show whether DF, RT, GR, etc.)

3678.2 GR

14. Kind & Status Plug. Bond

Statewide

15. Drilling Contractor

LaRue Drilling

16. Approx. Date Work will start

5/22/89

17. PROPOSED CASING AND CEMENT PROGRAM

SIZE OF HOLE	SIZE OF CASING	WEIGHT PER FOOT	SETTING DEPTH	SACKS OF CEMENT	EST. TOP
12 1/4"	8 5/8"	24#	450'	Sufficient to circulate	
7 7/8"	5 1/2"	17#	5000'	1500 sx to base of salt.	

We propose to drill to 450'; run and cement
8 5/8" casing, drill on to 5000' to test
the San Andres zone; run and cement 5 1/2"
casing and put on production.

APPROVAL VALID FOR 180 DAYS
PERMIT EXPIRES 11/4/89
UNLESS DRILLING UNDERWAY

IN ABOVE SPACE DESCRIBE PROPOSED PROGRAM: IF PROPOSAL IS TO DEEPEN OR PLUG BACK, GIVE DATA ON PRESENT PRODUCTIVE ZONE AND PROPOSED NEW PRODUCTIVE ZONE. GIVE BLOWOUT PREVENTER PROGRAM, IF ANY.

I hereby certify that the information above is true and complete to the best of my knowledge and belief.

SIGNATURE

Rhonda Nelson

TITLE Production Clerk

DATE 5/2/89

TYPE OR PRINT NAME

Rhonda Nelson

TELEPHONE NO. 748-3303

(This space for State Use)

Original Signed By
Mike Williams

APPROVED BY

TITLE

DATE

MAY 4 1989

CONDITIONS OF APPROVAL, IF ANY:

Partial ID
NL API 89
5.5

**NEW MEXICO OIL CONSERVATION COMMISSION
WELL LOCATION AND ACREAGE DEDICATION PLAT**

Form C-124
Supersedes C-128
Effective 1-1-85

All distances must be from the outer boundaries of the Section

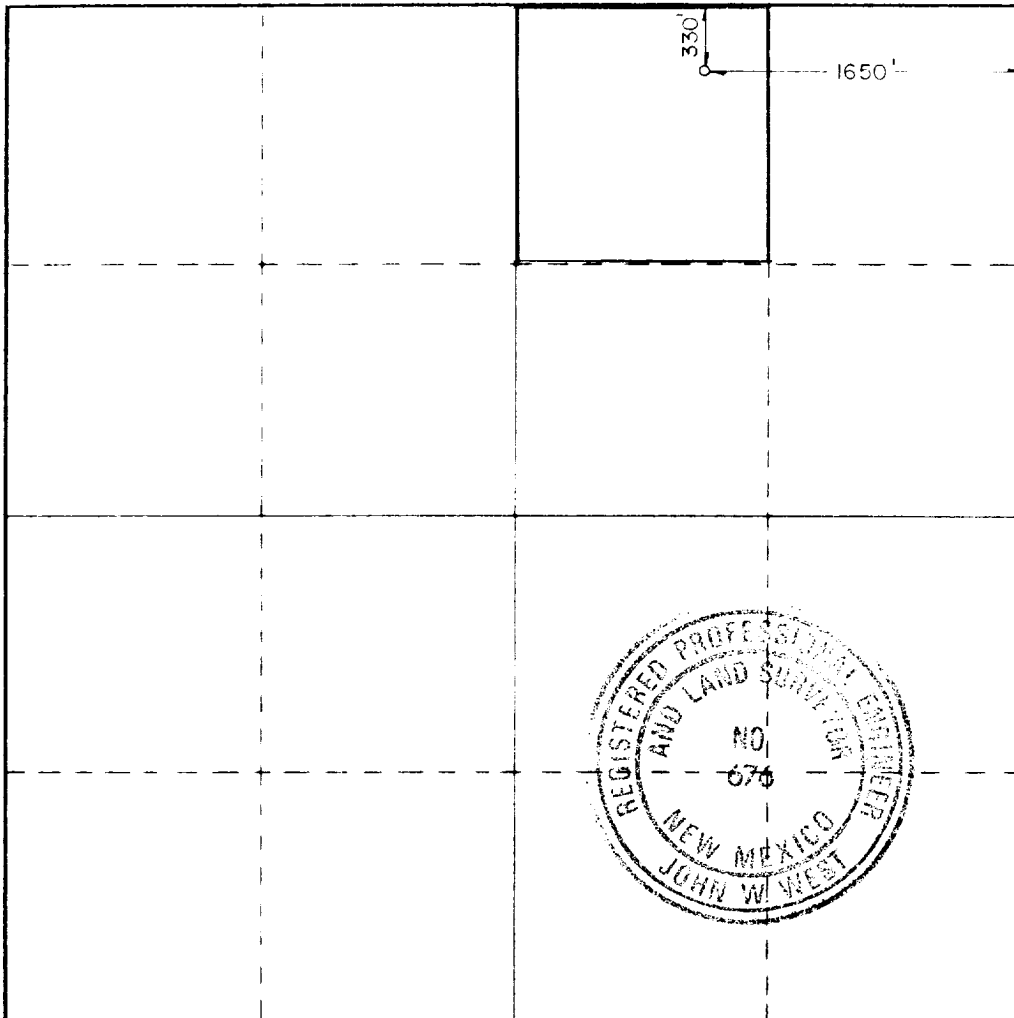
Operator Marbob Energy Corporation			Lease Texaco BE State		Well No. 3
Tract Letter B	Section 16	Township 17 South	Range 30 East	County Eddy County	
Actual Surface Location of Well: 330 feet from the North line and 1650 feet from the East line					
Ground Level Elev. 3678.2	Producing Formation San Andres		Pool Grbg Jackson SR Q Grbg SA		Dedicated Acreage 40

1. Outline the acreage dedicated to the subject well by colored pencil or hatchure marks on the plat below.
2. If more than one lease is dedicated to the well, outline each and identify the ownership thereof (both as to working interest and royalty).
3. If more than one lease of different ownership is dedicated to the well, have the interests of all owners been consolidated by communitization, unitization, force-pooling, etc?

☐ Yes ☐ No If answer is "yes," type of consolidation _____

If answer is "no," list the owners and tract descriptions which have actually been consolidated. (Use reverse side of this form if necessary.) _____

No allowable will be assigned to the well until all interests have been consolidated (by communitization, unitization, forced-pooling, or otherwise) or until a non-standard unit, eliminating such interests, has been approved by the Commission.



CERTIFICATION

I hereby certify that the information contained herein is true and complete to the best of my knowledge and belief.

Rhonda Nelson

Name

Rhonda Nelson

Position

Production Clerk

Company

Marbob Energy Corporation

Date

May 2, 1989

I hereby certify that the well location shown on this plat was plotted from field notes of actual surveys made by me or under my supervision, and that the same is true and correct to the best of my knowledge and belief.

Date Surveyed

July 29, 1988

Registered Professional Engineer and/or Land Surveyor

John W. West

Certificate No. **JOHN W. WEST, 676**

RONALD J. EIDSON, 3239