

UNITED STATES
DEPARTMENT OF THE INTERIOR
GEOLOGICAL SURVEY30-015-26227
5. LEASE DESIGNATION AND SERIAL NO.
LC-028731 (B)

APPLICATION FOR PERMIT TO DRILL, DEEPEN, OR PLUG BACK

1a. TYPE OF WORK

DRILL ☒DEEPEN ☐PLUG BACK ☐

b. TYPE OF WELL

OIL
WELL ☒GAS
WELL ☐

OTHER

SINGLE
ZONE ☒MULTIPLE
ZONE ☐

2. NAME OF OPERATOR

Marbob Energy Corporation ✓

3. ADDRESS OF OPERATOR

P.O. Drawer 217, Artesia, NM 88210

4. LOCATION OF WELL (Report location clearly and in accordance with any State requirements.)*
At surface

At proposed prod. zone 1980 FSL 1345 FEL.

same

NOV 2-'89

O. C. D. X
ARTESIA, OFFICE

6. IF INDIAN, ALLOTTEE OR TRIBE NAME

7. UNIT AGREEMENT NAME

8. FARM OR LEASE NAME

M. Dodd "B"

9. WELL NO.

65

10. FIELD AND POOL, OR WILDCAT

Grbg Jackson SR Q Grbg SA

11. SEC., T., E., M., OR BLK.
AND SURVEY OR AREA

Sec. 14-T17S-R29E

12. COUNTY OR PARISH

Eddy

13. STATE

NM

15. DISTANCE FROM PROPOSED*

LOCATION TO NEAREST
PROPERTY OR LEASE LINE, FT.
(Also to nearest drlg. unit line, if any)

1345'

16. NO. OF ACRES IN LEASE

1480

17. NO. OF ACRES ASSIGNED
TO THIS WELL

40

18. DISTANCE FROM PROPOSED LOCATION*
TO NEAREST WELL, DRILLING, COMPLETED,
OR APPLIED FOR, ON THIS LEASE, FT.

1015'

19. PROPOSED DEPTH

5000'

20. ROTARY OR CABLE TOOLS

Rotary

21. ELEVATIONS (Show whether DF, RT, GR, etc.)

3623.6' GR

22. APPROX. DATE WORK WILL START*

6/7/89

23.

PROPOSED CASING AND CEMENTING PROGRAM

SIZE OF HOLE	SIZE OF CASING	WEIGHT PER FOOT	SETTING DEPTH	QUANTITY OF CEMENT
12 1/4"	8 5/8"	24#	350'	Sufficient to circulate
7 7/8"	5 1/2"	17#	5000'	1500 sx, to base of salt.

Pay zone will be selectively perforated and stimulated as
needed for optimum production.

Attached are: 1. Location & acreage dedication plat
2. Supplemental drilling data
3. Surface use plan

APPROVAL SUBJECT TO
LAND REQUIREMENTS AND
SPECIAL STIPULATIONS
ATTACHED

IN ABOVE SPACE DESCRIBE PROPOSED PROGRAM: If proposal is to deepen or plug back, give data on present productive zone and proposed new productive zone. If proposal is to drill or deepen directionally, give pertinent data on subsurface locations and measured and true vertical depths. Give blowout preventer program, if any.

24.

SIGNED

Rhonda Nelson

TITLE Production Clerk

DATE 5/8/89

(This space for Federal or State office use)

PERMIT NO.

APPROVAL DATE

APPROVED BY

AREA MANAGER

CONDITIONS OF APPROVAL, IF ANY:

TITLE

CARLSBAD RESOURCE AREA

DATE 10/31/89

NSL-2645

4-14-89

*See Instructions On Reverse Side

OIL CONSERVATION DIVISION

P.O. Box 2088
Santa Fe, New Mexico 87504-2088

DISTRICT I
P.O. Box 1980, Hobbs, NM 88240

DISTRICT II
P.O. Drawer DD, Artesia, NM 88210

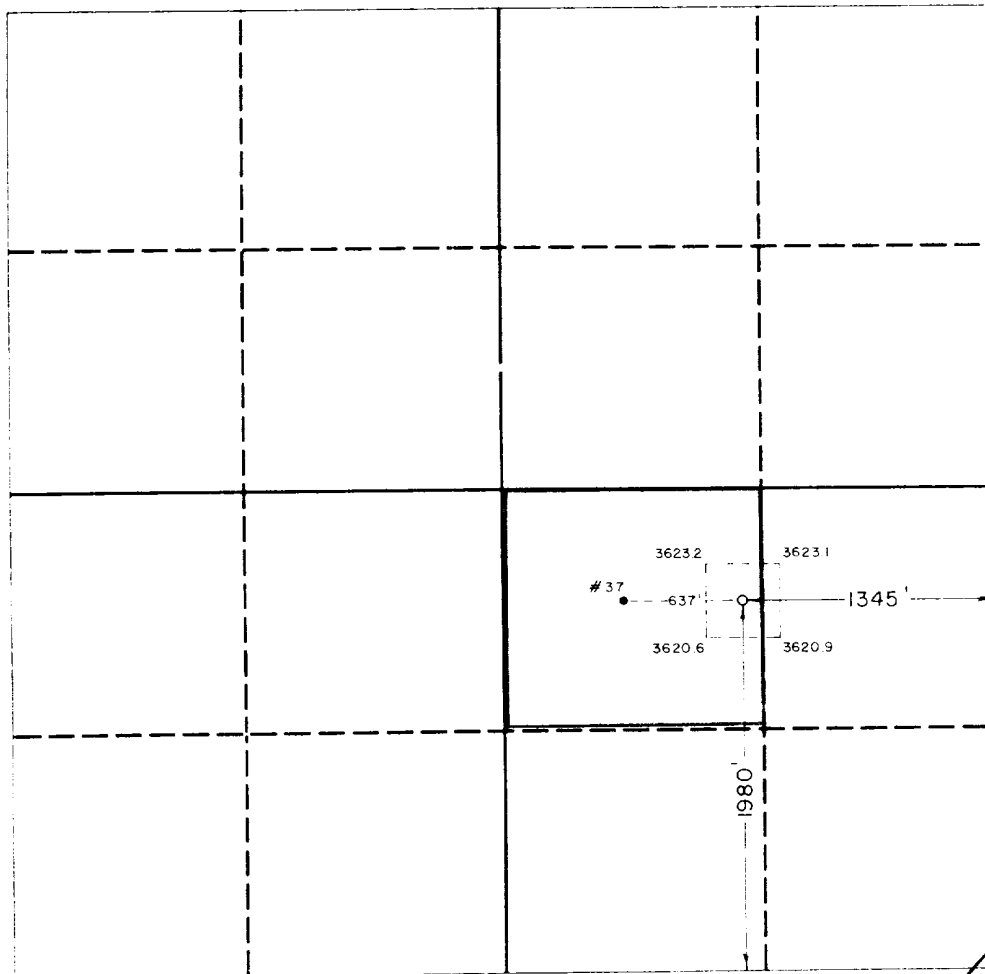
DISTRICT III
1000 Rio Brazos Rd., Aztec, NM 87410

WELL LOCATION AND ACREAGE DEDICATION PLAT

All Distances must be from the outer boundaries of the section

Operator Marbob Energy Corp.			Lease M Dodd "B"		Well No. 77
Unit Letter I	Section 14	Township 17 South	Range 22 East	County Eddy	
Actual Footage Location of Well: 1280 feet from the south line and 1345 feet from the east line					
Ground level Elev. 3223.5'	Producing Formation San Andres		Pool Grbg Jackson SR Q Grbg SA		Dedicated Acreage: 40 Acres

1. Outline the acreage dedicated to the subject well by colored pencil or hatchure marks on the plat below.
2. If more than one lease is dedicated to the well, outline each and identify the ownership thereof (both as to working interest and royalty).
3. If more than one lease of different ownership is dedicated to the well, have the interest of all owners been consolidated by communitization, unitization, force-pooling, etc.?
☐ Yes ☐ No If answer is "yes" type of consolidation _____
If answer is "no" list the owners and tract descriptions which have actually been consolidated. (Use reverse side of this form if necessary.)
No allowable will be assigned to the well until all interests have been consolidated (by communitization, unitization, forced-pooling, or otherwise) or until a non-standard unit, eliminating such interest, has been approved by the Division.



OPERATOR CERTIFICATION

I hereby certify that the information contained herein is true and complete to the best of my knowledge and belief.

Signature
Rhonda Nelson
Printed Name

Rhonda Nelson

Position

Production Clerk

Company

Marbob Energy Corporation

Date

March 30, 1989

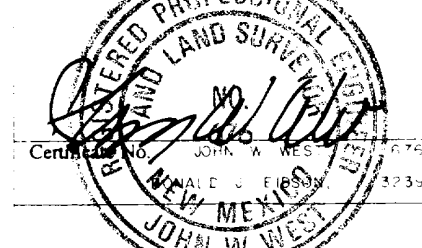
SURVEYOR CERTIFICATION

I hereby certify that the well location shown on this plat was plotted from field notes of actual surveys made by me or under my supervision, and that the same is true and correct to the best of my knowledge and belief.

Date Surveyed

March 27, 1989

Signature & Seal of
Professional Surveyor



SUPPLEMENTAL DRILLING DATA

MARBOB ENERGY CORPORATION
WELL #65 M DODD B FEDERAL
NW/4 SE/4 SEC. 14-17S-29E
EDDY COUNTY, NEW MEXICO
(DEVELOPMENT WELL)

1. SURFACE FORMATION: Quaternary.

2. ESTIMATED TOPS OF GEOLOGIC MARKERS:

Salt	360'	Queen	1815'
Base Salt	780'	Grayburg	2140'
Seven Rivers	1145'	San Andres	2510'
		Glorietta	3900'

3. ANTICIPATED POROSITY ZONES:

Water	Above 180'
Oil	2140' - 5000'

4. CASING DESIGN:

SIZE	INTERVAL	WEIGHT	GRADE	JOINT	CONDITION
8 5/8"	0-350'	24.0#	K-55	STC	New
5 1/2"	0-5000'	17.0#	K-55	STC	New

5. SURFACE CONTROL EQUIPMENT: A double ram-type or annular BOP will be used. (See diagram attached as Exhibit "E")

6. CIRCULATING MEDIUM:

0 - 350'	Fresh water mud with gel or lime as needed for viscosity control.
350'- 5000'	Salt water mud, conditioned as necessary for control of viscosity and water loss or gain.

7. AUXILIARY EQUIPMENT: Drill string safety valve.

8. LOGGING PROGRAM: CNL-FDC W/GR Log will be run to TD.

9. ABNORMAL PRESSURES, TEMPERATURES OR GASES: A water flow may be encountered in the salt section.

10. ANTICIPATED STARTING DATE: It is planned that operations will commence about ASAP 1989. Duration of drilling, testing and completion operations should be one to four weeks.

SURFACE USE PLAN
FOR
DRILLING, COMPLETION AND PRODUCTION

MARBOB ENERGY CORPORATION
WELL #65 M DODD B FEDERAL
1345' FEL & 1980' FSL SEC. 14-17S-29E
EDDY COUNTY, NEW MEXICO
(DEVELOPMENT WELL)

This plan is submitted with the application for permit to drill the above described well. The purpose of the plan is to describe the location of the proposed development well, the proposed construction activities and operations plan, the magnitude of surface disturbance involved, and the procedures to be followed in rehabilitating the surface after completion of the operation so that a complete appraisal can be made of the environmental affects associated with the operation.

LOCATED: 20 air miles east of Artesia, New Mexico.

FEDERAL LEASE NUMBER: LC 028731 (B)

LEASE ISSUED: January 1, 1960

RECORD LESSEE: Sun Oil Corporation

OPERATOR'S AUTHORITY: Operating rights owned by Marbob Energy Corporation.

BOND COVERAGE: Lessees \$150,000 nation-wide bond.

ACRES IN LEASE: 1,480 acres

SURFACE OWNERSHIP: U.S. Government with a grazing permit issued to Bogle Farms, Inc. P.O. Box 358, Dexter, New Mexico 88230

POOL: Grayburg-Jackson, SR, Q, Gb, SA
(40-acre spacing)

EXHIBITS:

- A. Portion of Eddy County Map
- B. Oil & Gas Map
- C. Road Map & Wells in vicinity of Proposed Drillsite
- D. Sketch of Well Pad
- E. Sketch of electric lines and existing roads.
- F. Sketch of BOP

THIRTEEN POINT PROGRAM

1. EXISTING ROADS: From Artesia go approximately 20 miles east Federal Highway US-82 4/10 of a mile beyond Mile Post 129. (This point is approximately 3.1 miles west of Loco Hills, New Mexico). From this starting point turn left (North) on County Road 215 and proceed in a northerly direction for a distance of .9 miles. Next turn left and proceed west for a distance of .3 miles. At this point the proposed new road begins. Turn right and proceed in a northerly direction (approximately) to drillsite.
2. PROPOSED NEW ROAD: The new road will run from the existing road north to the drillsite, a distance of approximately .10 miles.
3. LOCATION OF EXISTING WELLS: The nearest production to the proposed well is the M Dodd B #63 located east of the proposed drillsite. This well and all existing wells in the vicinity of the proposed drillsite are shown on Exhibits "E" and "C".
4. LOCATION OF EXISTING AND/OR PROPOSED FACILITIES:
 - A. This is a producing lease and central tank battery is located in the NE/4 NE/4 of Section 15-17S-29E.
 - B. If the well is productive, flowline will be laid along the proposed and existing roadbeds to the battery.
 - C. There are electric powerlines on the lease, the closest pole being located approximately 635 feet south of the well location. The proposed electric powerline would be approximately 585 feet in length and run from the above referenced pole to a pole in the Southwest corner of the well pad, which will have to be inserted. See Exhibit "E".
5. WATER SUPPLY: It is not planned to drill a water supply well. Water for leasehold operations will be purchased from a commercial water hauler.
6. CONSTRUCTION MATERIALS: Material for construction of the proposed new road and well pad will be obtained from an existing approved caliche pit located on federal land in the SE1/4 NE1/4 of Section 14-17S-29E.

7. WASTE DISPOSAL:

- A. Drill cuttings will be disposed of in the drilling pits.
- B. Drilling fluids will be allowed to evaporate in the drilling pits until the pits are dry.
- C. Water produced during tests will be disposed of in the pits.
- D. Oil produced during tests will be produced into temporary test tanks.
- E. Trash, waste paper, garbage, and junk will be buried in a trash pit and covered with a minimum of 24 inches of dirt. All waste material will be contained to prevent scattering by the wind. Location of the trash pit is shown on Exhibit "D".
- F. All trash and debris will be buried or removed from the wellsite within 45 days after finishing each drilling and/or completion operation.

8. ANCILLARY FACILITIES: None anticipated.

9. WELLSITE LAYOUT: Refer to Exhibit "D" for direction orientation and access.

- A. The wellsite has been surveyed and an area has been staked and flagged.
- B. The dimensions and relative location of the drill pad and pit with respect to the well bore are shown on Exhibit "D".
- C. The location is between numerous sand dunes, however, only a minimal amount of sand dune leveling will need to be done.
- D. The well pad will be surfaced with caliche.

10. RESTORATION OF SURFACE:

- A. After completion of drilling and/or completion operations, all equipment and other material not needed for operations will be removed. Pits will be filled and the location cleaned of all trash and junk to leave the wellsite in as aesthetically pleasing a condition as possible.

- B. Any unguarded pits containing fluids will be fenced until they are covered with soil.
- C. After abandonment, all equipment, trash and junk will be removed and the location cleaned. Any special rehabilitation and/or special revegetation requirements of the BLM will be complied with and accomplished as expeditiously as possible.

11. OTHER INFORMATION:

- A. Topography: The undisturbed wellsite is at an elevation of 3623.6 feet. The terrain of the area surrounding the location is relatively flat. Regional slope is to the southwest toward the Pecos River.
- B. Soil: Top soil at the wellsite is sand.
- C. Land Use & Type: The vicinity surrounding the drillsite is semiarid rangeland and its primary use is for production of oil and gas.
- D. Flora: Flora in the vicinity surrounding the drillsite is sparse. It consists primarily of javalina, saltbush, broomweed and mesquite.
- E. Fauna: No wildlife was observed, however fauna for this type of habitat normally consists of lizards, snakes, rabbits, rodents, coyotes, skunks, quail, dove, and other small birds.
- F. Ponds & Streams: None.
- G. Water Wells: The nearest known water well is over 2 miles to the northeast.
- H. Residences & Other Structures: There are no occupied dwellings within one (1) mile of the proposed drillsite.
- I. Archaeological, Historical & Cultural Sites: An archaeological survey has been conducted by the Pecos Valley Archeological Consultants and a formal report has been or will be furnished directly to BLM upon its completion.

12. OPERATOR'S REPRESENTATIVE: Representatives responsible for assuring compliance with the approved Surface Use Plan:

Mack Chase or John R. Gray
P. O. Drawer 217
Artesia, New Mexico 88210
Phone 505-748-3303

13. CERTIFICATION:

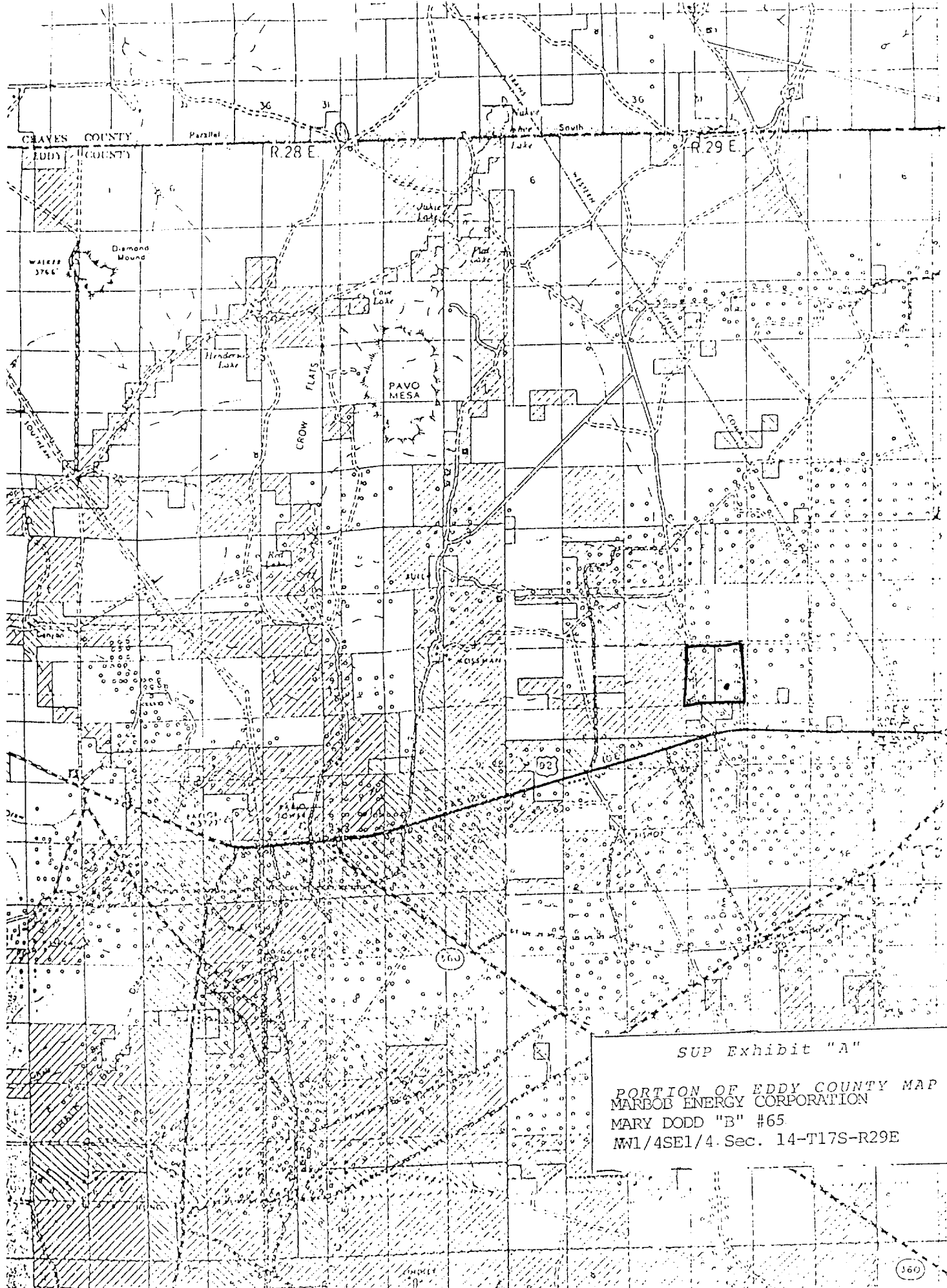
I hereby certify that I, or persons under my direct supervision, have inspected the proposed drillsite and access route; that I am familiar with the conditions which presently exist; that the statements made in this plan are, to the best of my knowledge true and correct; and, that the work associated with the operations proposed herein will be performed by MARBOB ENERGY CORPORATION and its sub-contractors in conformity with this plan and the terms and conditions under which it is approved.

MAY 7, 1989

Date

Mack C. Chase

Mack C. Chase, President
MARBOB ENERGY CORPORATION



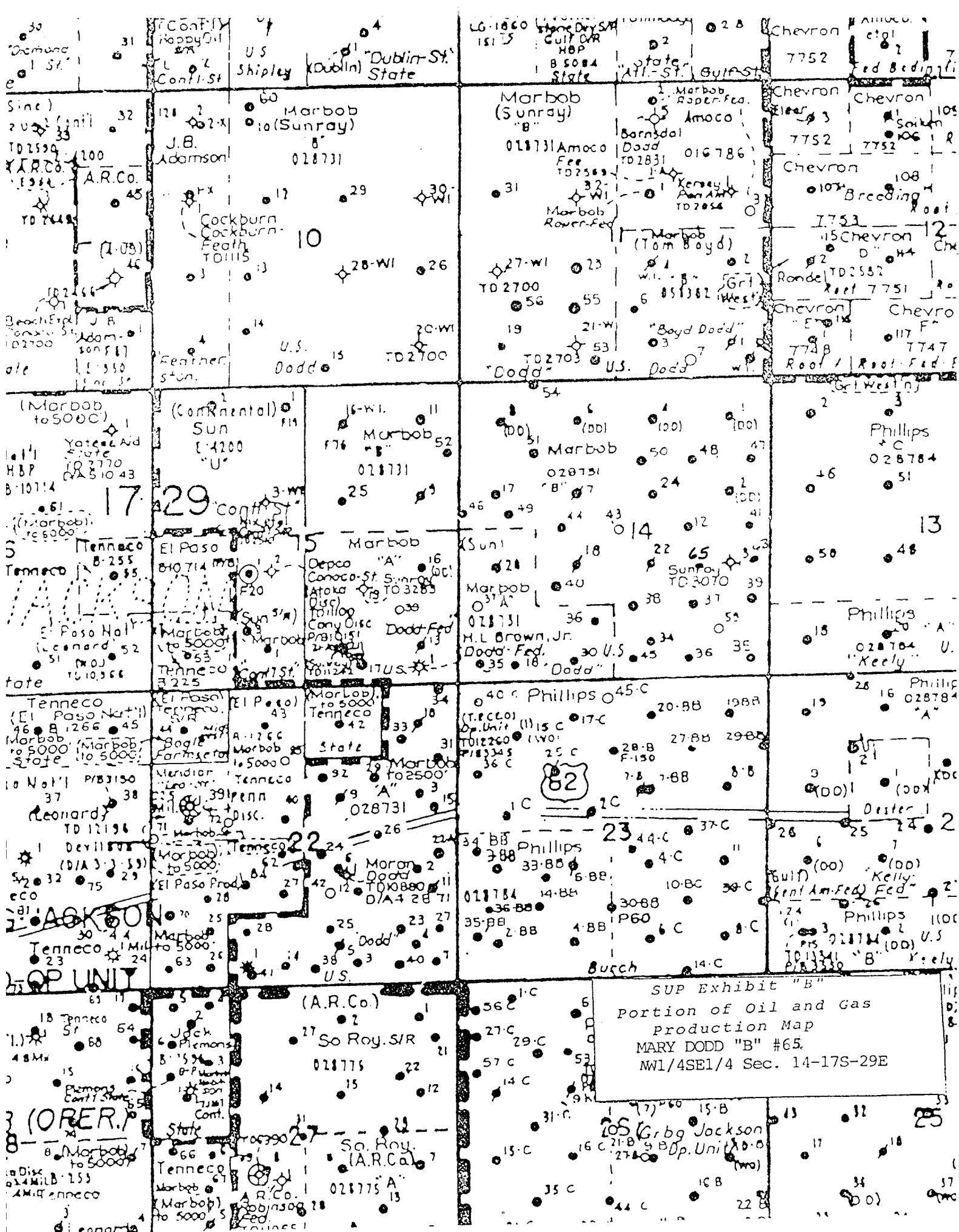
T.15 S.

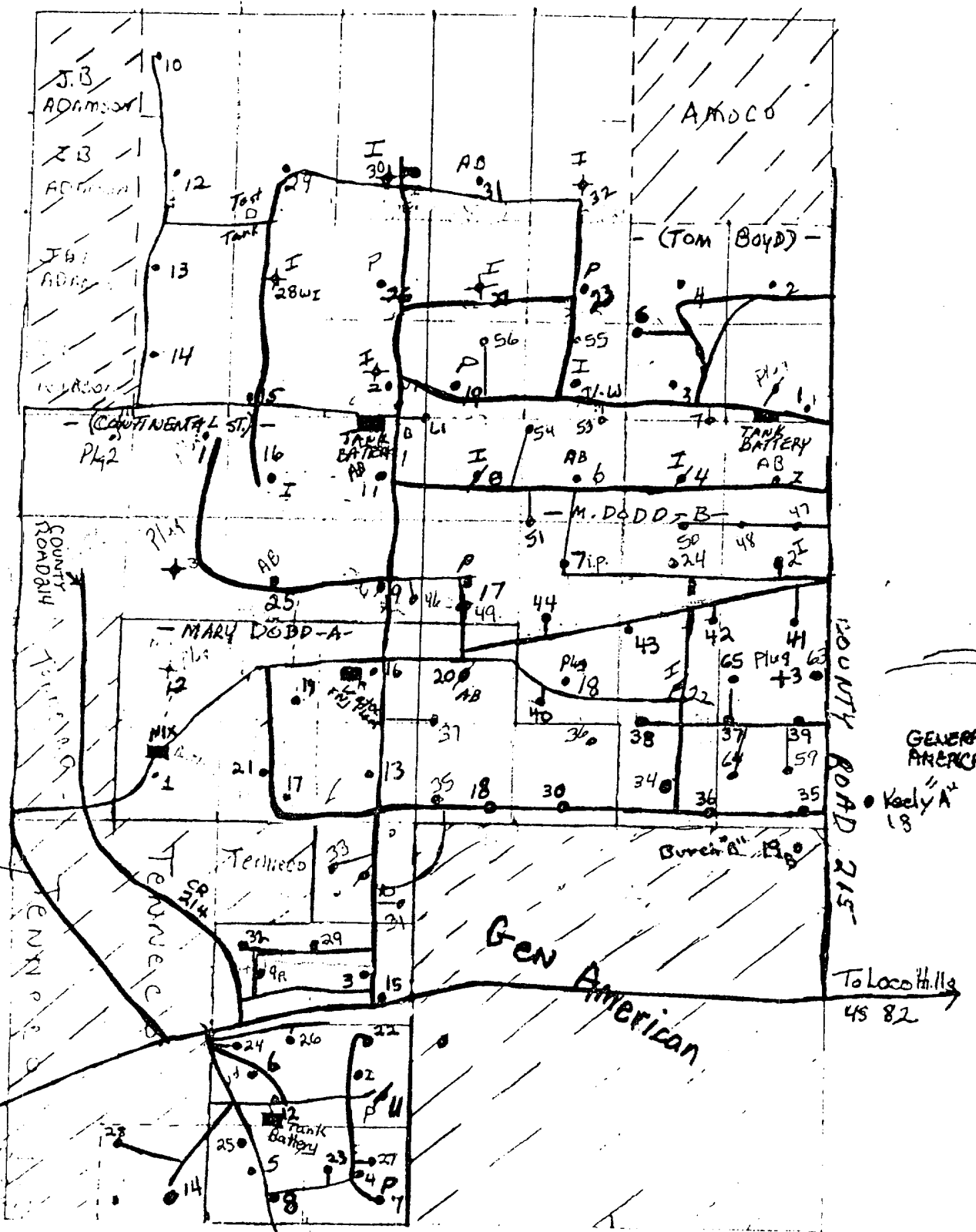
T.16 S

T.17 S

T.18 S

SUP Exhibit "A"
PORTION OF EDDY COUNTY MAP
MARBOE ENERGY CORPORATION
MARY DODD "B" #65
W1/4SE1/4 Sec. 14-T17S-R29E



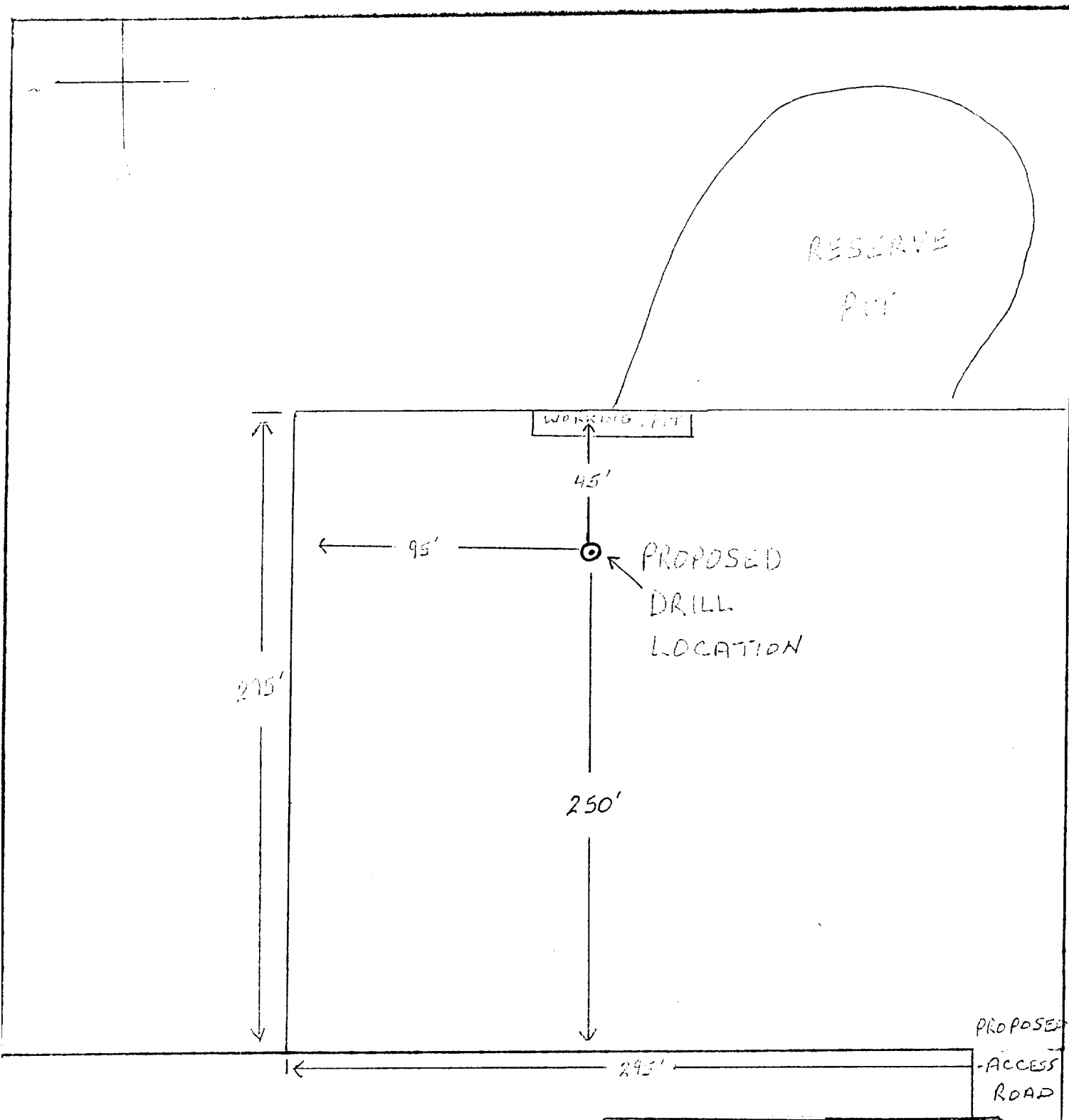


LEGEND

1cm = 20 ft.

SUP Exhibit "C"

Road Map Indicating Wells
In Vicinity of Drillsite
Marbob Energy Corporation
Mary Dodd B #65
NW/4 SE/4, Sec.14, T-17S, R-29E



LEGEND
(1cm = 100ft)

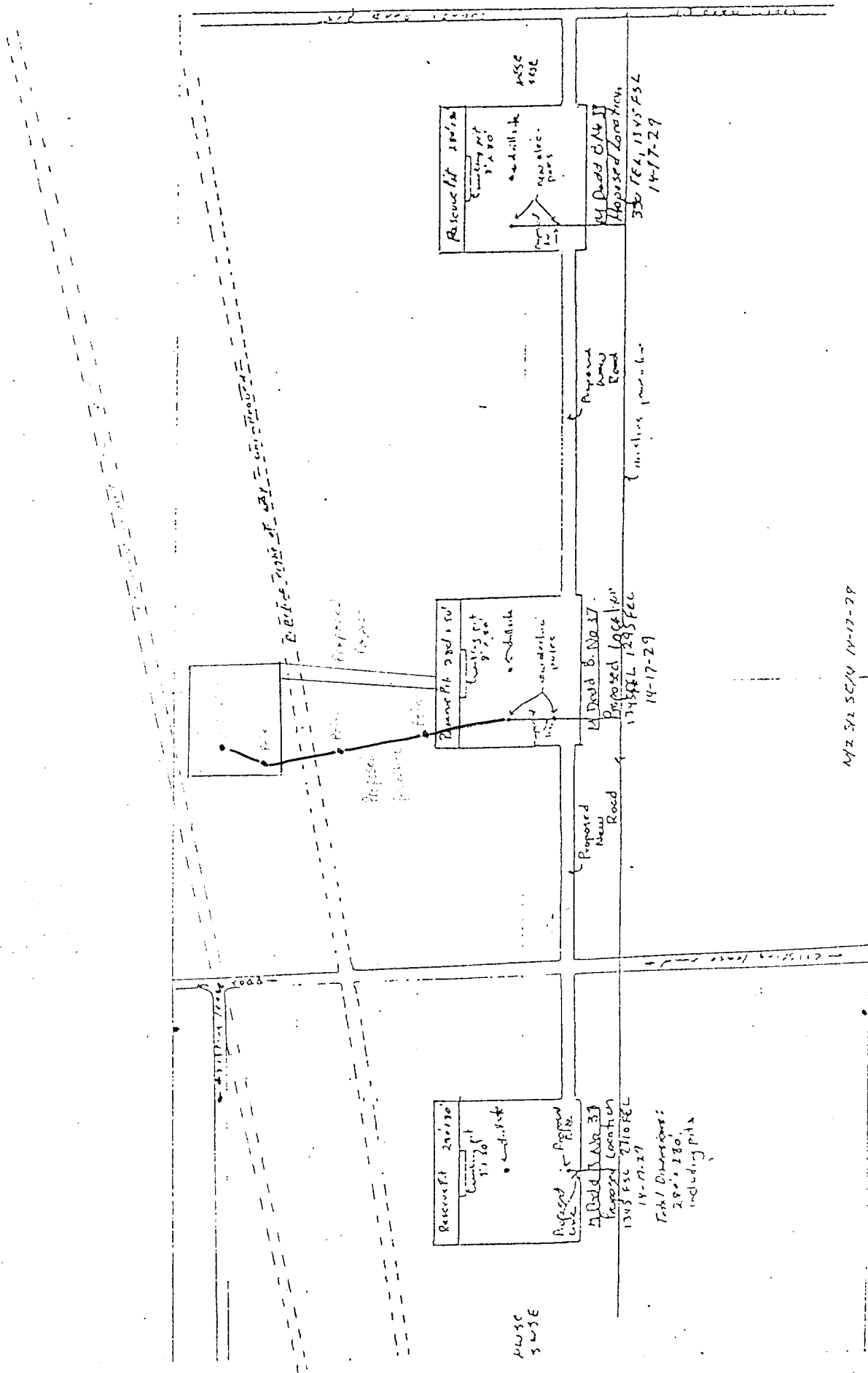
SUP Exhibit "D"
SKETCH OF Marbob Energy Corporation
Mary Dodd B #65
NW/4 SE/4, Sec.14, T-17S, R-29E

Schedule "E"

Proposed Powerline and Poles

Mary Dodd B #65

NW/4 SE/4, Sec. 14, T-17S, R-29E



NY 542 SC/4 14-17-28

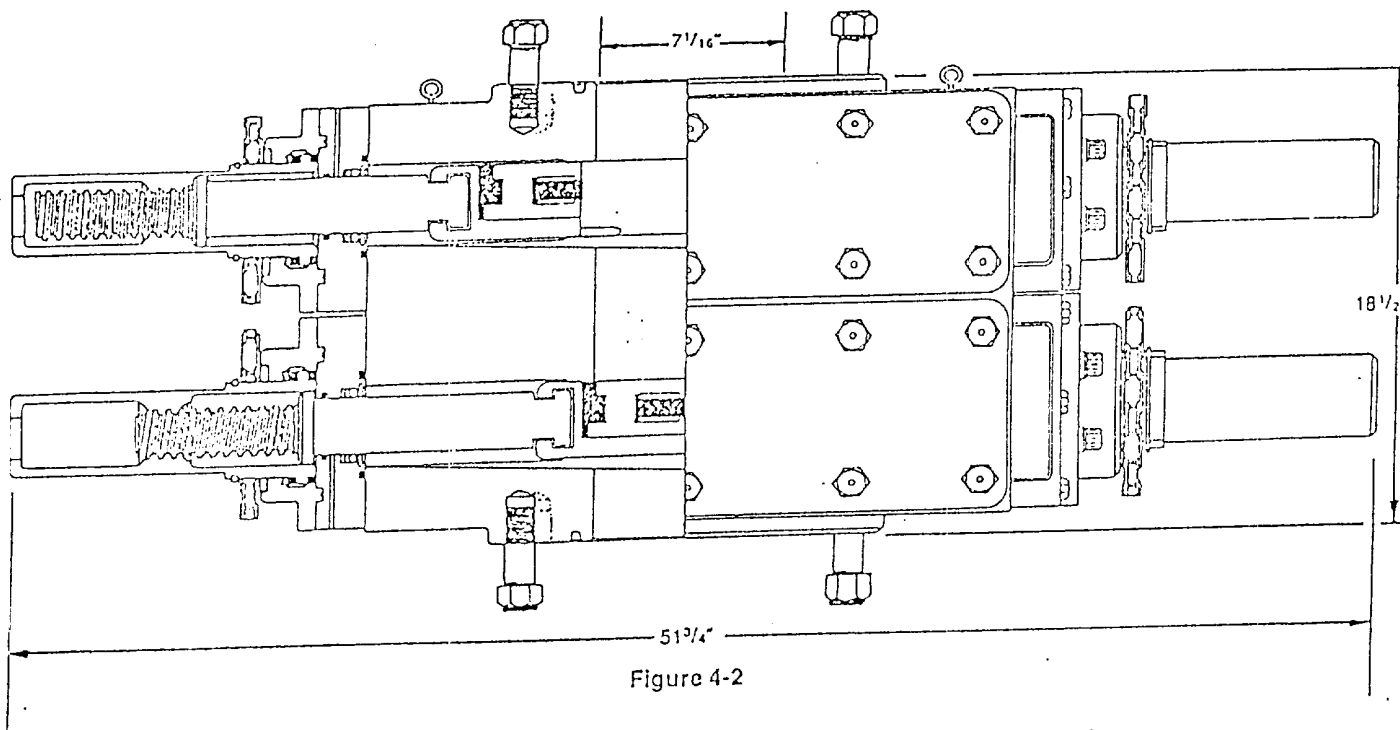
LEGEND:

1 cm = 77.65'
(prior to reduction)

Proposed New Road

Proposed Powerline

Location: pseudorj



DIMENSIONS AND WEIGHTS

		Manual
Weight	Single (pounds)	1,272
	Double (pounds)	2,335
Overall height, less studs	Single (inches)	10
	Double (inches)	18 1/2
Overall length (inches)		51 3/4
Overall width, less handwheel (inches)		20 1/4
Opening through preventer (inches)		7 1/16
Working pressure (psi)		3,000
Test pressure (psi)		6,000
Handwheel diameter (inches)		20
Ring joint gasket API number		R-45

SUP Exhibit "F"

Marbob Energy CORPORATION

Mary Dodd B #65

NW/4 SE/4, Sec.14, T-17S, R-29E

Eddy County, New Mexico

30-015-26227

1-22-90

Laterolog

2000-4579

Spectral Density
Dual Spaced

2000-4578

Comp. Spectral Natural
3550-4549