

UNITED STATES  
DEPARTMENT OF THE INTERIOR  
GEOLOGICAL SURVEYSUBMIT IN TRIPLICATE\*  
(Other instructions on  
reverse side)Form approved.  
Budget Bureau No. 42-R1425.30-015-26230  
5. LEASE DESIGNATION AND SERIAL NO.

LC-049998 (A)

6. IF INDIAN, ALLOTTEE OR TRIBE NAME

7. UNIT AGREEMENT NAME

8. FARM OR LEASE NAME

Foster Eddy

9. WELL NO.

7

10. FIELD AND POOL, OR WILDCAT

Grbg Jackson SR Q Grbg SA

11. SEC., T., R., M., OR BLK.  
AND SURVEY OR AREA

Sec. 17-T17S-R31E

12. COUNTY OR PARISH

Eddy

13. STATE

NM

## APPLICATION FOR PERMIT TO DRILL, DEEPEN, OR PLUG BACK

## 1a. TYPE OF WORK

DRILL ☒DEEPEN ☐PLUG BACK ☐

## b. TYPE OF WELL

OIL  
WELL ☒GAS  
WELL ☐

OTHER

SINGLE  
ZONE ☒MULTIPLE  
ZONE ☐

## 2. NAME OF OPERATOR

Marbob Energy Corporation

## 3. ADDRESS OF OPERATOR

P.O. Drawer 217, Artesia, NM 88210

## 4. LOCATION OF WELL (Report location clearly and in accordance with any State requirements.)\*

At surface

330 FNL 1650 FEL

At proposed prod. zone

same

## 14. DISTANCE IN MILES AND DIRECTION FROM NEAREST TOWN OR POST OFFICE\*

28 air miles east of Artesia, NM 88210

## 15. DISTANCE FROM PROPOSED\*

LOCATION TO NEAREST  
PROPERTY OR LEASE LINE, FT.  
(Also to nearest drig. unit line, if any)

330'

## 16. NO. OF ACRES IN LEASE

280

17. NO. OF ACRES ASSIGNED  
TO THIS WELL

40

## 18. DISTANCE FROM PROPOSED LOCATION\*

TO NEAREST WELL, DRILLING, COMPLETED,  
OR APPLIED FOR, ON THIS LEASE, FT.

330

## 19. PROPOSED DEPTH

6000'

## 20. ROTARY OR CABLE TOOLS

Rotary

## 21. ELEVATIONS (Show whether DF, RT, GR, etc.)

3749.0' GR

## 22. APPROX. DATE WORK WILL START\*

9/14/89

## 23.

## PROPOSED CASING AND CEMENTING PROGRAM

SIZE OF HOLE	SIZE OF CASING	WEIGHT PER FOOT	SETTING DEPTH	QUANTITY OF CEMENT
12 1/4"	8 5/8"	24#	450'	Sufficient to circ 1500 sx
7 7/8"	5 1/2"	17#	6000'	Tie back to surf csq.

Pay zone will be selectively perforated and stimulated  
for optimum production.

Attached are: 1. Location & acreage dedication plat  
2. Supplemental drilling data  
3. Surface Use Plan

APPROVED AND  
ATTACHED

RECEIVED

IN ABOVE SPACE DESCRIBE PROPOSED PROGRAM: If proposal is to deepen or plug back, give data on present productive zone and proposed new productive zone. If proposal is to drill or deepen directionally, give pertinent data on subsurface locations and measured and true vertical depths. Give blowout preventer program, if any.

24.

SIGNED

Rhonda Nelson

TITLE Production Clerk

DATE 8/10/89

(This space for Federal or State office use)

PERMIT NO.

APPROVAL DATE

APPROVED BY

CONDITIONS OF APPROVAL, IF ANY:

TITLE

AREA MANAGER  
CARLSBAD RESOURCE AREA

DATE

11-389

Submit to Appropriate  
District Office  
State Lease - 4 copies  
Fee Lease - 3 copies

State of New Mexico  
Energy, Minerals and Natural Resources Department

Form C-102  
Revised 1-1-89

OIL CONSERVATION DIVISION

DISTRICT I  
P.O. Box 1980, Hobbs, NM 88240

P.O. Box 2088

Santa Fe, New Mexico 87504-2088

DISTRICT II  
P.O. Drawer DD, Artesia, NM 88210

DISTRICT III  
1000 Rio Brazos Rd., Aztec, NM 87410

WELL LOCATION AND ACREAGE DEDICATION PLAT

All Distances must be from the outer boundaries of the section

Operator Marbob Energy Corp.			Lease Foster Eddy		Well No. 7
Unit Letter B	Section 17	Township 17 South	Range 31 East	County Eddy	NMPM
Actual Footage Location of Well: 1650 feet from the East line and 330 feet from the North line					
Ground level Elev. 3749.0	Producing Formation San Andres		Pool Grbg Jackson SR Q Grbg SA		Dedicated Acreage: 40 Acres

1. Outline the acreage dedicated to the subject well by colored pencil or hatchure marks on the plat below.

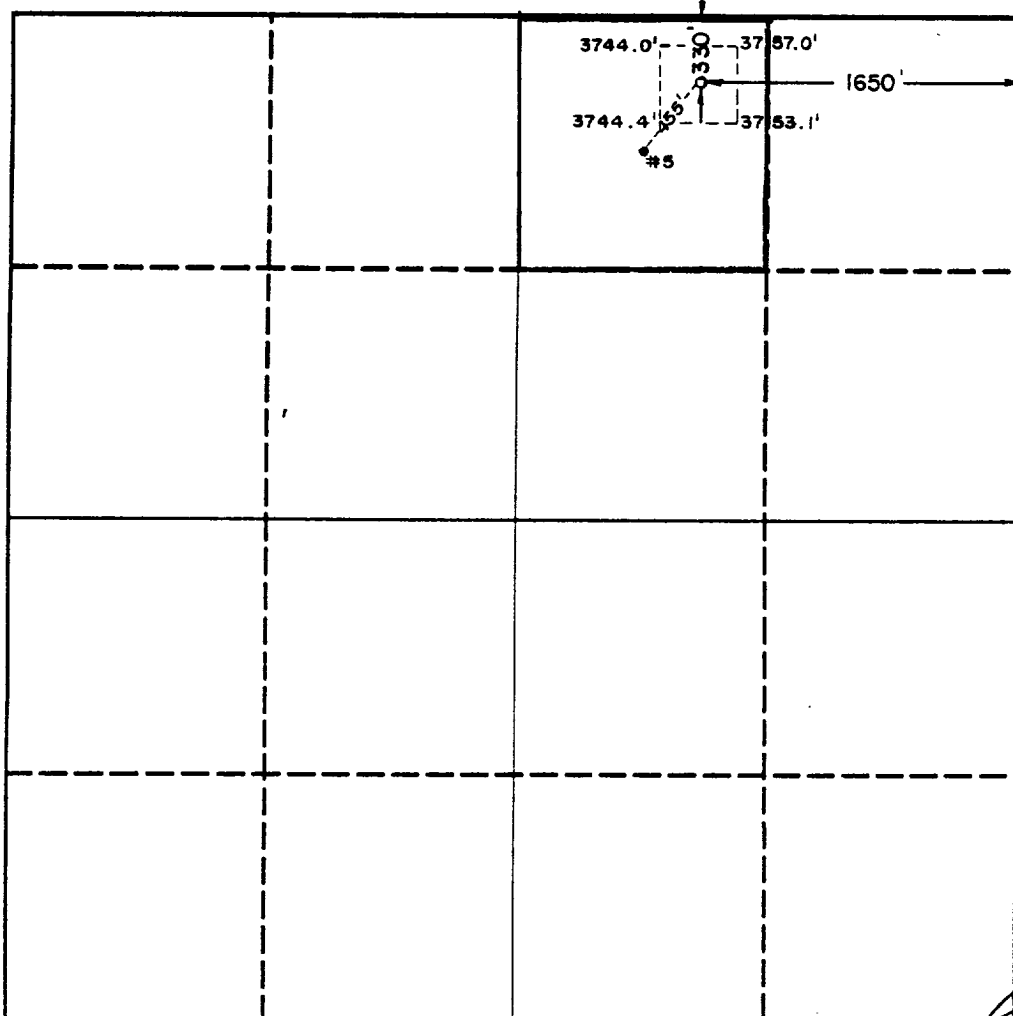
2. If more than one lease is dedicated to the well, outline each and identify the ownership thereof (both as to working interest and royalty).

3. If more than one lease of different ownership is dedicated to the well, have the interest of all owners been consolidated by communitization, unitization, force-pooling, etc.?

☐ Yes ☐ No If answer is "yes" type of consolidation

If answer is "no" list the owners and tract descriptions which have actually been consolidated. (Use reverse side of this form if necessary).

No allowable will be assigned to the well until all interests have been consolidated (by communitization, unitization, forced-pooling, or otherwise) or until a non-standard unit, eliminating such interest, has been approved by the Division.



OPERATOR CERTIFICATION

I hereby certify that the information contained herein is true and complete to the best of my knowledge and belief.

Signature

Printed Name

Position

Company

Date

August 10, 1989

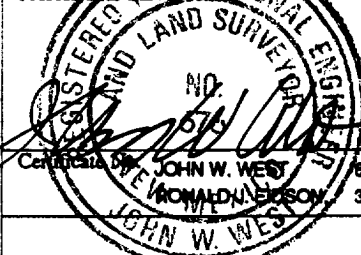
SURVEYOR CERTIFICATION

I hereby certify that the well location shown on this plat was plotted from field notes of actual surveys made by me or under my supervision, and that the same is true and correct to the best of my knowledge and belief.

Date Surveyed

August 2, 1989

Signature & Seal of Professional Surveyor



## SUPPLEMENTAL DRILLING DATA

MARBOB ENERGY CORPORATION  
WELL #7 FOSTER EDDY FEDERAL  
NW/4 NE/4 SEC. 17-17S-31E  
EDDY COUNTY, NEW MEXICO  
(DEVELOPMENT WELL)

1. SURFACE FORMATION: Quaternary.

2. ESTIMATED TOPS OF GEOLOGIC MARKERS:

Salt	450'	Queen	2430'
Base Salt	1100'	Grayburg	2804'
Seven Rivers	1340'	San Andres	3134'

3. ANTICIPATED POROSITY ZONES:

Water	Above 180'
Oil	2950' - 6000'

4. CASING DESIGN:

SIZE	INTERVAL	WEIGHT	GRADE	JOINT	CONDITION
8 5/8"	0-450'	24.0#	K-55	STC	New
5 1/2"	0-6000'	17.0#	K-55	STC	New

5. SURFACE CONTROL EQUIPMENT: A double ram-type or annular BOP will be used. (See diagram attached as Exhibit "E")

6. CIRCULATING MEDIUM:

0 - 450'	Fresh water mud with gel or lime as needed for viscosity control.
----------	---

450'- 6000'	Salt water mud, conditioned as necessary for control of viscosity and water loss or gain.
-------------	---

7. AUXILIARY EQUIPMENT: Drill string safety valve.

8. LOGGING PROGRAM: CNL-FDC W/GR Log will be run to TD.

9. ABNORMAL PRESSURES, TEMPERATURES OR GASES: A water flow may be encountered in the salt section.

10. ANTICIPATED STARTING DATE: It is planned that operations will commence about September 14, 1989. Duration of drilling, testing and completion operations should be one to four weeks.

SURFACE USE PLAN  
FOR  
DRILLING, COMPLETION AND PRODUCTION

MARBOB ENERGY CORPORATION  
WELL #7 FOSTER EDDY FEDERAL  
1650' FEL & 330' FNL SEC. 17-17S-31E  
EDDY COUNTY, NEW MEXICO  
(DEVELOPMENT WELL)

This plan is submitted with the application for permit to drill the above described well. The purpose of the plan is to describe the location of the proposed development well, the proposed construction activities and operations plan, the magnitude of surface disturbance involved, and the procedures to be followed in rehabilitating the surface after completion of the operation so that a complete appraisal can be made of the environmental affects associated with the operation.

LOCATED: 28 air miles east of Artesia, New Mexico.

FEDERAL LEASE NUMBER: LC 049998 (A)

LEASE ISSUED: June 1, 1968

RECORD LESSEE: Marbob Energy Corporation

OPERATOR'S AUTHORITY: Operating rights owned by Marbob Energy Corporation.

BOND COVERAGE: Lessees \$150,000 nation-wide bond.

ACRES IN LEASE: 280 acres

SURFACE OWNERSHIP: Bureau of Land Management

POOL: Grayburg-Jackson, SR, Q, Gb, SA  
(40-acre spacing)

EXHIBITS:

- A. Portion of Eddy County Map
- B. Oil & Gas Map
- C. Road Map & Wells in vicinity of  
Proposed Drillsite
- D. Sketch of Well Pad
- E. Sketch of BOP

## THIRTEEN POINT PROGRAM

1. EXISTING ROADS: From Artesia go approximately 28.4 miles east on Federal Highway US-82. (This point is approximately 5.4 miles east of Loco Hills, New Mexico). From this starting point turn left (North) on dirt road and proceed in a northerly direction for 1.6 miles. Next turn left and proceed northwest for a distance of .6 miles. Then turn right and proceed in an easterly direction for a distance of .2 miles. At this point the proposed new road begins. Turn left and proceed in a northeasterly direction to drillsite.
2. PROPOSED NEW ROAD: The new road will run from the existing road west to the drillsite, a distance of approximately 200 feet.
3. LOCATION OF EXISTING WELLS: The nearest production to the proposed well is the Foster Eddy Federal #5 located southwest of the proposed drillsite. This well and all existing wells in the vicinity of the proposed drillsite are shown on Exhibits "B" and "C".
4. LOCATION OF EXISTING AND/OR PROPOSED FACILITIES:
  - A. This is a producing lease and central tank battery is located in the NW/4 SE/4 of Section 17-17S-31E.
  - B. If the well is productive, flowline will be laid along the proposed and existing roadbeds to the battery.
  - C. There are electric powerlines on the lease, the closest pole being located approximately 200 feet southwest of the well location. The proposed electric powerline would be approximately 150 feet in length and run from the above referenced pole to a pole in the Southwest corner of the well pad, which will have to be inserted.
5. WATER SUPPLY: It is not planned to drill a water supply well. Water for leasehold operations will be purchased from a commercial water hauler.
6. CONSTRUCTION MATERIALS: Material for construction of the proposed new road and well pad will be obtained from an existing approved caliche pit located on state land in the NE1/4 SW1/4 of Section 16-17S-31E.

7. WASTE DISPOSAL:

- A. Drill cuttings will be disposed of in the drilling pits.
- B. Drilling fluids will be allowed to evaporate in the drilling pits until the pits are dry.
- C. Water produced during tests will be disposed of in the pits.
- D. Oil produced during tests will be produced into temporary test tanks.
- E. Trash, waste paper, garbage, and junk will be buried in a trash pit and covered with a minimum of 24 inches of dirt. All waste material will be contained to prevent scattering by the wind. Location of the trash pit is shown on Exhibit "D".
- F. All trash and debris will be buried or removed from the wellsite within 45 days after finishing each drilling and/or completion operation.

8. ANCILLARY FACILITIES: None anticipated.

9. WELLSITE LAYOUT: Refer to Exhibit "D" for direction orientation and access.

- A. The wellsite has been surveyed and an area has been staked and flagged.
- B. The dimensions and relative location of the drill pad and pit with respect to the well bore are shown on Exhibit "D".
- C. The location is nearly level but contains several sand dunes which will need to be leveled.
- D. The well pad will be surfaced with caliche.

10. RESTORATION OF SURFACE:

- A. After completion of drilling and/or completion operations, all equipment and other material not needed for operations will be removed. Pits will be filled and the location cleaned of all trash and junk to leave the wellsite in as aesthetically pleasing a condition as possible.

- B. Any unguarded pits containing fluids will be fenced until they are covered with soil.
- C. After abandonment, all equipment, trash and junk will be removed and the location cleaned. Any special rehabilitation and/or special revegetation requirements of the BLM will be complied with and accomplished as expeditiously as possible.

11. OTHER INFORMATION:

- A. Topography: The undisturbed wellsite is at an elevation of 3749.0 feet. The terrain of the area surrounding the location is relatively flat. Regional slope is to the southwest toward the Pecos River.
- B. Soil: Top soil at the wellsite is sand.
- C. Land Use & Type: The vicinity surrounding the drillsite is semiarid rangeland and its primary use is for production of oil and gas.
- D. Flora: Flora in the vicinity surrounding the drillsite is sparse. It consists primarily of javalina, saltbush, broomweed and mesquite.
- E. Fauna: No wildlife was observed, however fauna for this type of habitat normally consists of lizards, snakes, rabbits, rodents, coyotes, skunks, quail, dove, and other small birds.
- F. Ponds & Streams: None.
- G. Water Wells: The nearest known water well is over 4 miles to the southwest.
- H. Residences & Other Structures: There are no occupied dwellings within one (1) mile of the proposed drillsite.
- I. Archaeological, Historical & Cultural Sites: An archaeological survey has been conducted by the Pecos Archeological Consultants and a formal report has been or will be furnished directly to BLM upon its completion.

12. OPERATOR'S REPRESENTATIVE: Representatives responsible for assuring compliance with the approved Surface Use Plan:

Mack Chase or John R. Gray  
P. O. Drawer 217  
Artesia, New Mexico 88210  
Phone 505-748-3303

13. CERTIFICATION:

I hereby certify that I, or persons under my direct supervision, have inspected the proposed drillsite and access route; that I am familiar with the conditions which presently exist; that the statements made in this plan are, to the best of my knowledge true and correct; and, that the work associated with the operations proposed herein will be performed by MARBOB ENERGY CORPORATION and its sub-contractors in conformity with this plan and the terms and conditions under which it is approved.

8/2/89  
Date

Mack C. Chase  
Mack C. Chase, President  
MARBOB ENERGY CORPORATION



f)



LOGGING & PIPE RECOVERY

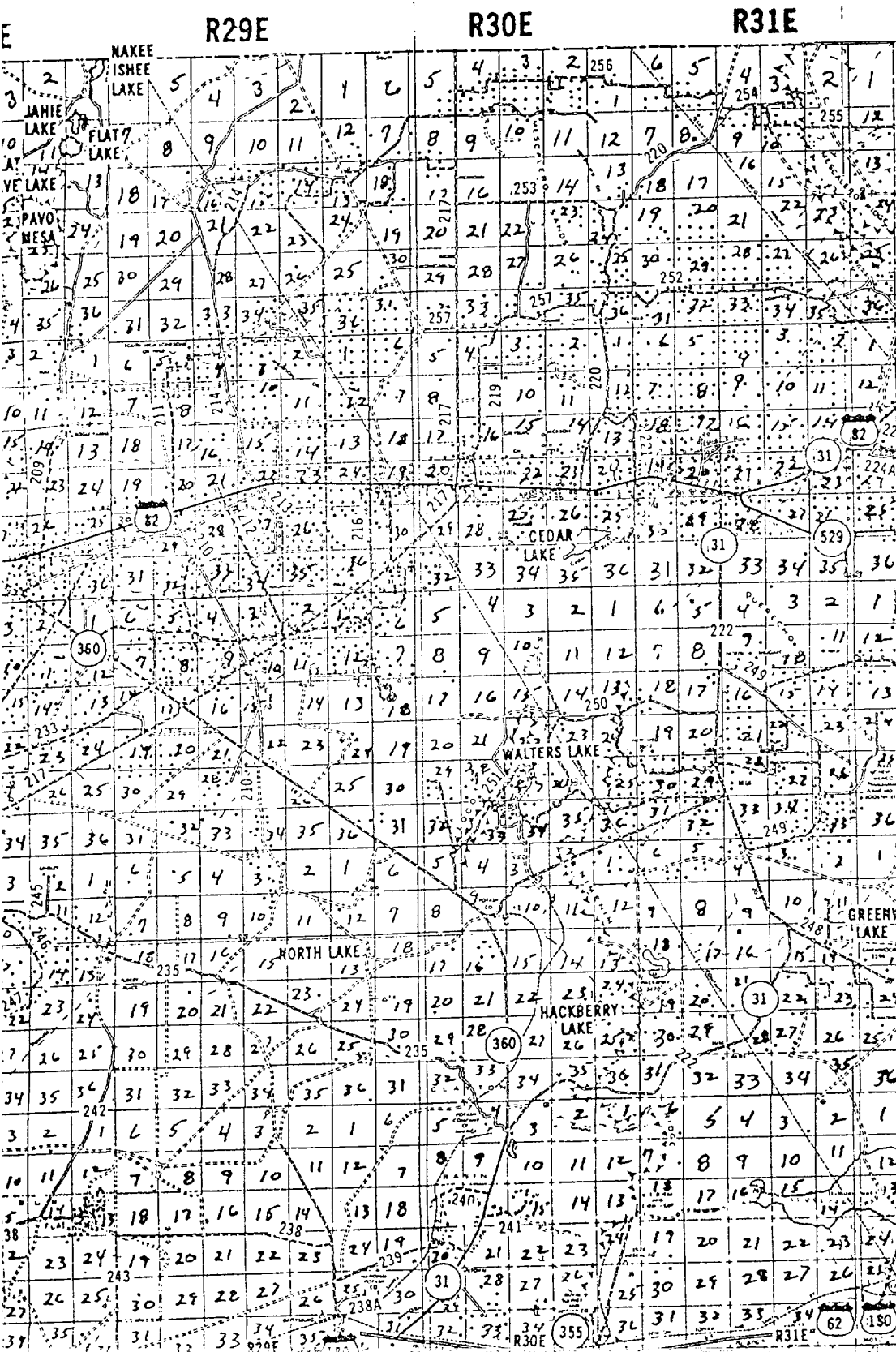
PIPE RECOVERY

24 HOUR SERVICE

**746-2753**

2 Miles South Of Artesia On The Carlsbad Hwy.  
Rt. 1, Box 182  
Artesia, N.M. 88210

U N T Y



T16S

T17S

T18S

T19S

T20S

Y

T

Z

U

O

C

EXHIBIT A

Portion of Eddy County  
Map

Marbob Energy Corporation  
Foster Eddy Federal  
#7  
NW/4 NE/4, Section 17  
T-17S, R-31E  
Eddy County, New Mexico

TO JCT. U.S. 62-180

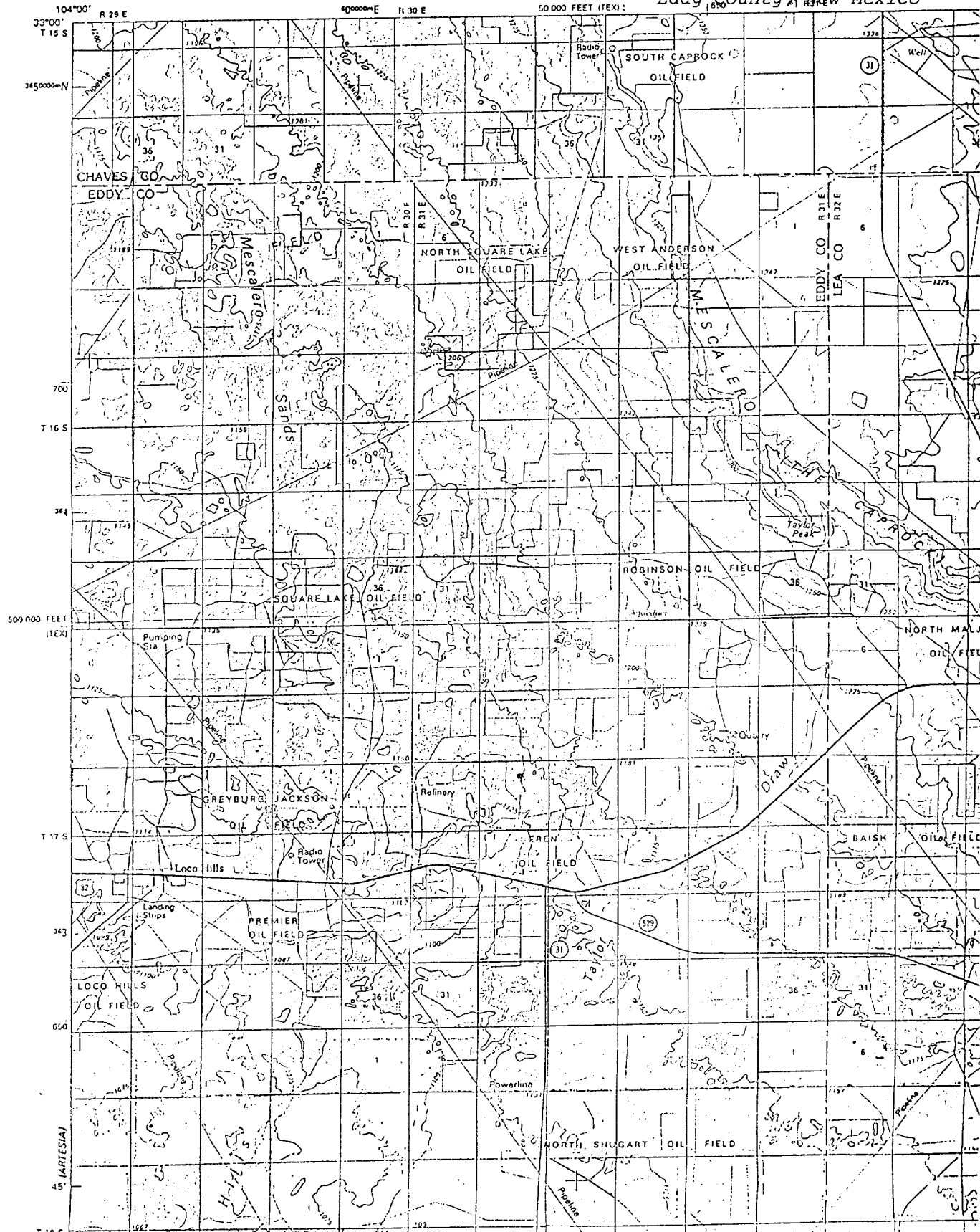
TO HOBBS

Exhibit B

UNITED STATES  
DEPARTMENT OF THE INTERIOR  
BUREAU OF LAND MANAGEMENT

Portion of Oil and Gas  
Production Map  
Marbob Energy Corporation  
Foster Eddy Federal #7  
NW/4 NE/4, Sec.17, T-17S,R31E  
Eddy County, New Mexico

(ROSWELL)



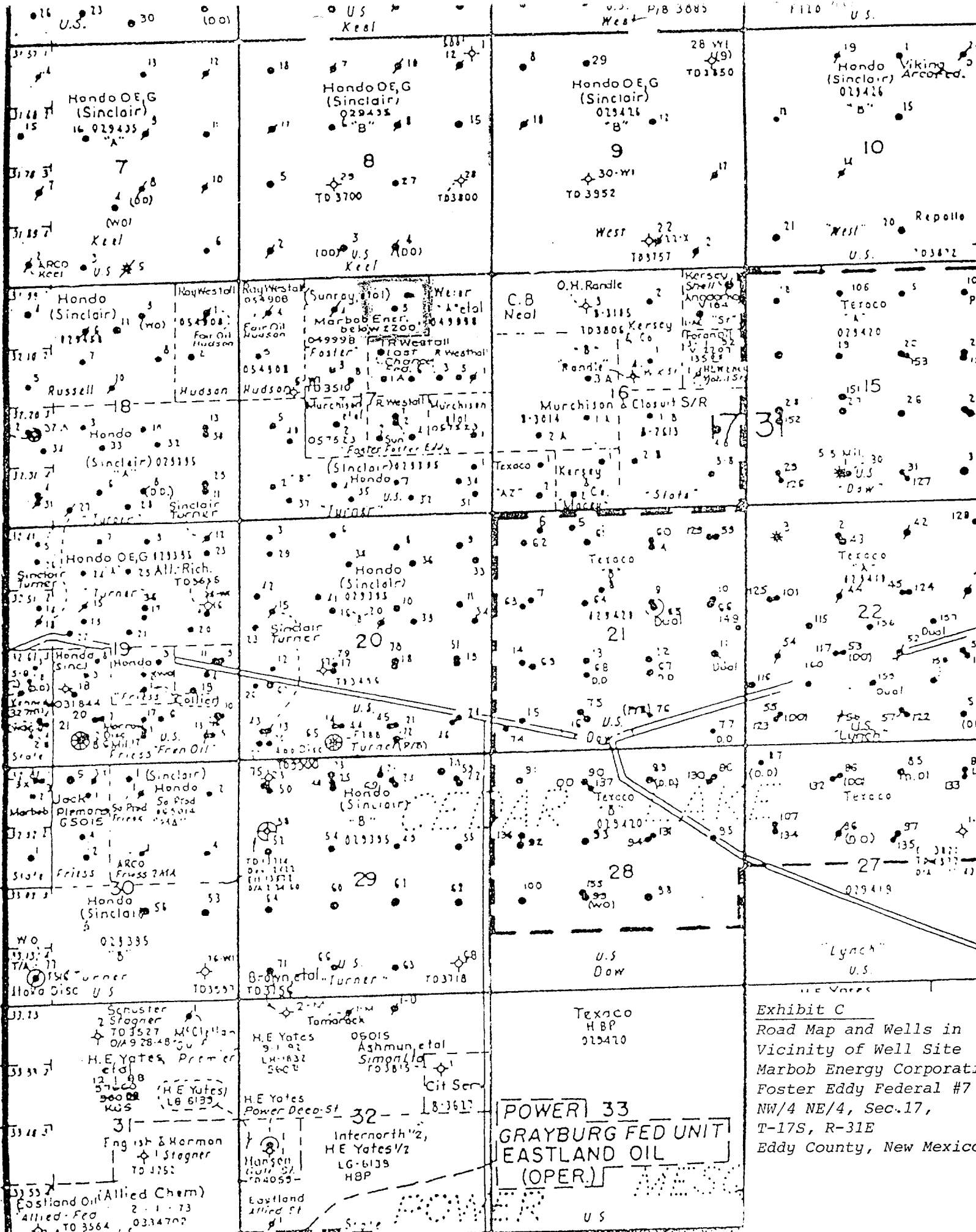
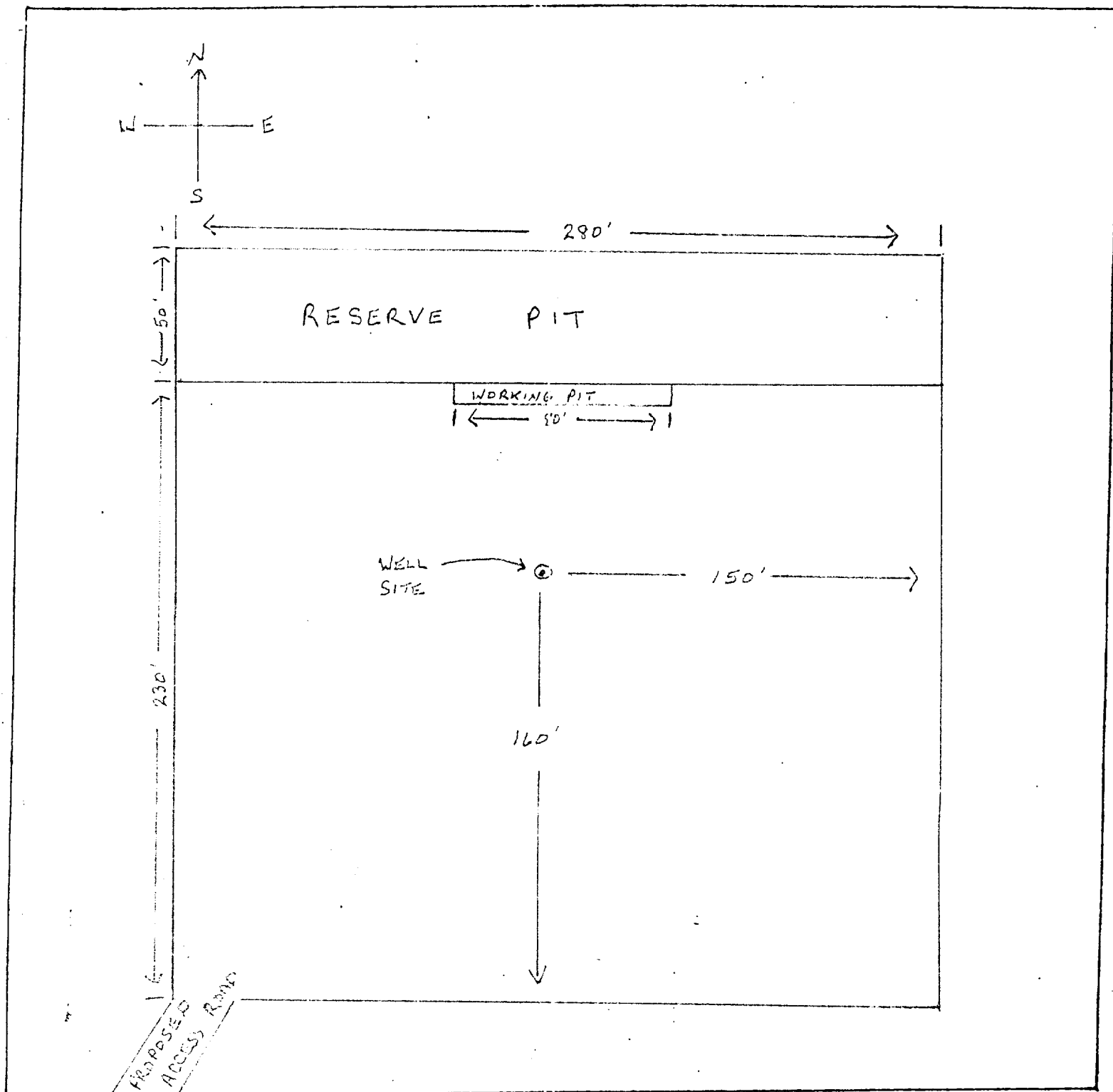


Exhibit C  
Road Map and Wells in  
Vicinity of Well Site  
Marbob Energy Corporati  
Foster Eddy Federal #7  
NW/4 NE/4, Sec.17,  
T-17S, R-31E  
Eddy County, New Mexico



LEGEND

1 cm = 20 ft.

SUP Exhibit "D"

SKETCH OF PROPOSED WELL PAD

Marbob Energy Corporation

Foster Eddy Federal No. 7

NW/4 NE/4, Sec.17, T-17S, R-31E

Eddy County, New Mexico

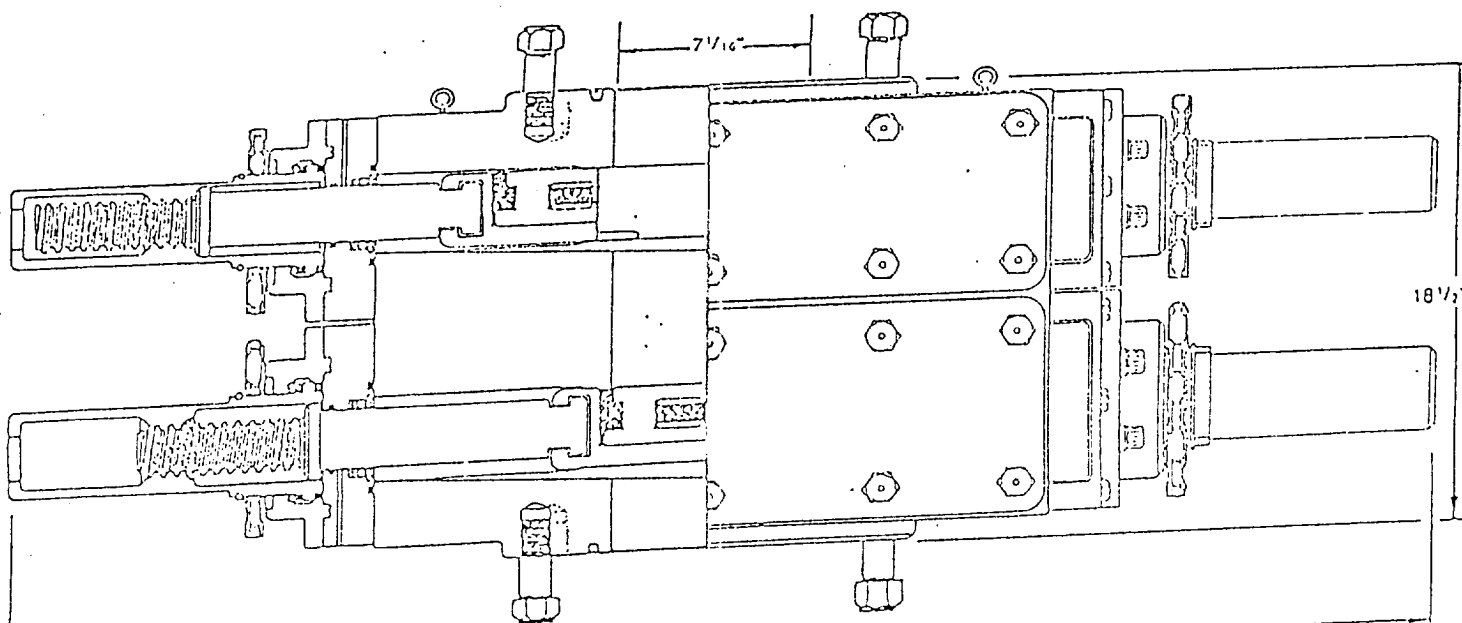


Figure 4-2

## DIMENSIONS AND WEIGHTS

Weight	Manual	
	Single (pounds)	Double (pounds)
Overall height, less studs	10	18 1/2
	51 3/4	20 1/4
Overall length (inches)	7 1/16	
Overall width, less handwheel (inches)	3,000	
Opening through preventer (inches)	6,000	
Working pressure (psi)	20	
Test pressure (psi)	R-45	
Handwheel diameter (inches)		
Ring joint gasket API number		

BOP  
 Marbob Energy Corporation  
 Foster Eddy Federal No. 7  
 NW/4 NE/4, Sec. 17, T-17S, R-31E  
 Eddy County, New Mexico