

UNITED STATES  
DEPARTMENT OF THE INTERIOR  
BUREAU OF LAND MANAGEMENT

CONTACT RECEIVING  
OFFICE FOR  
OF COPIES REQUIRED  
(Other Instructions on  
reverse side)

30-015-26365  
BLM Roswell District  
Modified Form No.  
NND60-3160-2

APPLICATION FOR PERMIT TO DRILL, DEEPEN, OR PLUG BACK

1a. TYPE OF WORK

DRILL ☒

DEEPEN ☐

PLUG BACK ☐

b. TYPE OF WELL

OIL  
WELL ☒

GAS  
WELL ☐

OTHER

SINGLE  
ZONE ☒

MULTIPLE  
ZONE ☐

2. NAME OF OPERATOR

Marbob Energy Corporation

3a. Area Code & Phone No.

(505) 748-3303

3. ADDRESS OF OPERATOR

P. O. Drawer 217, Artesia, NM 88210

4. LOCATION OF WELL (Report location clearly and in accordance with any State requirements.)\*

At surface

2615 FSL 1980 FEL

At proposed prod. zone

same

14. DISTANCE IN MILES AND DIRECTION FROM NEAREST TOWN OR POST OFFICE\*

Approximately 21 air miles east of Artesia, NM

15. DISTANCE FROM PROPOSED\*

LOCATION TO NEAREST

PROPERTY OR LEASE LINE, FT.

(Also to nearest drlg. unit line, if any)

1980'

16. NO. OF ACRES IN LEASE

1480

17. NO. OF ACRES ASSIGNED  
TO THIS WELL

40

18. DISTANCE FROM PROPOSED LOCATION\*

TO NEAREST WELL, DRILLING, COMPLETED,

OR APPLIED FOR, ON THIS LEASE, FT.

19. PROPOSED DEPTH

4600'

20. ROTARY OR CABLE TOOLS

Rotary

21. ELEVATIONS (Show whether DF, RT, GR, etc.)

3618.9' GR

22. APPROX. DATE WORK WILL START\*

4/20/90

23. PROPOSED CASING AND CEMENTING PROGRAM

HOLE SIZE	CASING SIZE	WEIGHT/FOOT	GRADE	THREAD TYPE	SETTING DEPTH	QUANTITY OF CEMENT
12 1/4"	8 5/8"	24#	J-55	LT&C	350'	circulate
7 7/8"	5 1/2"	17#	J-55	LT&C	4600'	Sufficiently
						attempt to circulate.

Pay zone will be selectively perforated and stimulated  
as needed for optimum production.

Attached are: 1. Location & acreage dedication plat  
2. Supplemental drilling data  
3. Surface use plan

NOTE: On production string, a fluid caliber will be run, will  
figure cement w/25% excess, attempt to circulate.

APPROVAL SUBJECT TO  
GENERAL REQUIREMENTS AND  
SPECIAL STIPULATIONS  
ATTACHED

IN ABOVE SPACE DESCRIBE PROPOSED PROGRAM: If proposal is to deepen or plug back, give data on present productive zone and proposed new productive zone. If proposal is to drill or deepen directionally, give pertinent data on subsurface locations and measured and true vertical depths. Give blowout preventer program, if any.

24.

SIGNED

Thonda Nelson

TITLE

Production Clerk

DATE

3/19/90

(This space for Federal or State office use)

PERMIT NO.

APPROVAL DATE

AREA MANAGER

CARLSBAD RESOURCE AREA

APPROVED BY

Orig. Signed by Richard L. Manus

TITLE

DATE

4-18-90

CONDITIONS OF APPROVAL, IF ANY:

NSL-2787

Appv-5-16-90

\*See Instructions On Reverse Side

Submit to Appropriate  
District Office  
State Lease - 4 copies  
Fee Lease - 3 copies

State of New Mexico  
Energy, Minerals and Natural Resources Department

Form C-102  
Revised 1-1-89

OIL CONSERVATION DIVISION

P.O. Box 2088  
Santa Fe, New Mexico 87504-2088

DISTRICT I  
P.O. Box 1980, Hobbs, NM 88240

DISTRICT II  
P.O. Drawer DD, Artesia, NM 88210

DISTRICT III  
1000 Rio Brazos Rd., Aztec, NM 87410

WELL LOCATION AND ACREAGE DEDICATION PLAT

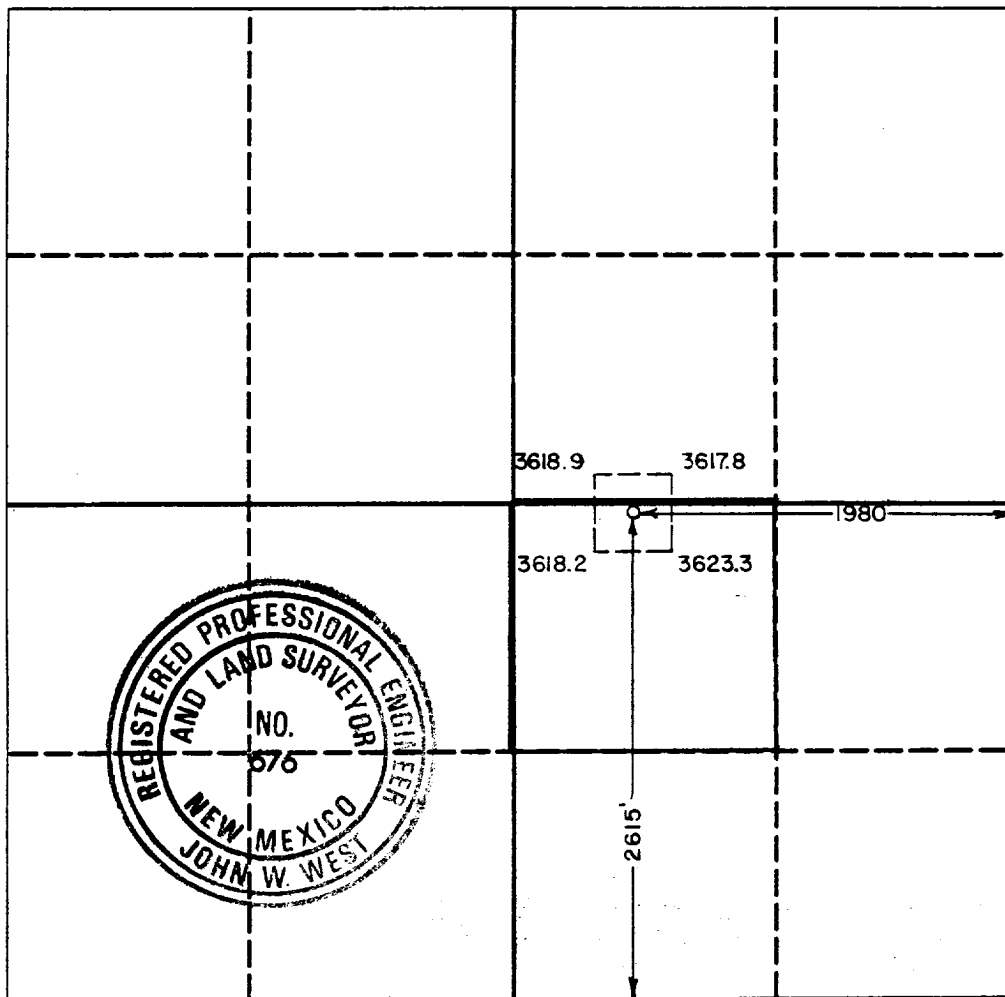
All Distances must be from the outer boundaries of the section

Operator <b>MARBOB ENERGY CORP.</b>			Lease <b>Mary Dodd "B"</b>		Well No. <b>67</b>
Unit Letter <b>J</b>	Section <b>14</b>	Township <b>17 South</b>	Range <b>29 East</b>	County <b>Eddy</b>	
Actual Footage Location of Well: <b>2615</b> feet from the <b>SOUTH</b> line and <b>1980</b> feet from the <b>EAST</b> line					
Ground level Elev. <b>3618.9</b>	Producing Formation <b>San Andres</b>		Pool <b>Grbg Jackson SR Q Grbg SA</b>	Dedicated Acreage: <b>40 Acres</b>	

1. Outline the acreage dedicated to the subject well by colored pencil or hatchure marks on the plat below.
2. If more than one lease is dedicated to the well, outline each and identify the ownership thereof (both as to working interest and royalty).
3. If more than one lease of different ownership is dedicated to the well, have the interest of all owners been consolidated by communitization, unitization, force-pooling, etc.?  
☐ Yes ☐ No If answer is "yes" type of consolidation \_\_\_\_\_

If answer is "no" list the owners and tract descriptions which have actually been consolidated. (Use reverse side of this form if necessary.) \_\_\_\_\_

No allowable will be assigned to the well until all interests have been consolidated (by communitization, unitization, forced-pooling, or otherwise) or until a non-standard unit, eliminating such interest, has been approved by the Division.



OPERATOR CERTIFICATION

I hereby certify that the information contained herein is true and complete to the best of my knowledge and belief.

Signature

*Rhonda Nelson*

Printed Name

Rhonda Nelson

Position

Production Clerk

Company

Marbob Energy Corporation

Date

3/19/90

SURVEYOR CERTIFICATION

I hereby certify that the well location shown on this plat was plotted from field notes of actual surveys made by me or under my supervision, and that the same is true and correct to the best of my knowledge and belief.

Date Surveyed

December 30, 1989

Signature & Seal of  
Professional Surveyor

*John W. West*

Certificate No. JOHN W. WEST, 676

RONALD J. EIDSON, 3239

## SUPPLEMENTAL DRILLING DATA

MARBOB ENERGY CORPORATION  
WELL #67 M. DODD B FEDERAL  
NW/4 SE/4 SEC. 14-17S-29E  
EDDY COUNTY, NEW MEXICO  
(RE-ENTRY WELL)

1. SURFACE FORMATION: Quaternary.

2. ESTIMATED TOPS OF GEOLOGIC MARKERS:

Salt	360'	Queen	1815'
Base Salt	780'	Grayburg	2140'
Seven Rivers	1145'	San Andres	2510'
		Glorietta	3900'

3. ANTICIPATED POROSITY ZONES:

Water	Above 180'
Oil	2350' - 4600'

4. CASING DESIGN:

SIZE	INTERVAL	WEIGHT	GRADE	JOINT	CONDITION
8 5/8"	0-350'	24.0#	J-55	LT&C	New
5 1/2"	0-4600'	17.0#	J-55	LT&C	New

5. SURFACE CONTROL EQUIPMENT: A double ram-type or annular BOP will be used. (See diagram attached as Exhibit "E")

6. CIRCULATING MEDIUM:

0'- 350 ' Fresh water mud with gel or lime as needed for viscosity control.

350' - 4,600' Salt water mud, conditioned as necessary for control of viscosity and water loss or gain.

7. AUXILIARY EQUIPMENT: Drill string safety valve.

8. LOGGING PROGRAM: CNL-FDC W/GR Log will be run to TD.

9. ABNORMAL PRESSURES, TEMPERATURES OR GASES: A water flow may be encountered in the salt section.

10. ANTICIPATED STARTING DATE: It is planned that operations will commence about April 20, 1990. Duration of drilling, testing and completion operations should be one to four weeks.

SURFACE USE PLAN  
FOR  
DRILLING, COMPLETION AND PRODUCTION

MARBOB ENERGY CORPORATION  
WELL #67 M. DODD B FEDERAL  
2615' FSL & 1980' FEL SEC. 14-17S-29E  
EDDY COUNTY, NEW MEXICO  
(DEVELOPMENT WELL)

This plan is submitted with the application for permit to drill the above described well. The purpose of the plan is to describe the location of the proposed development well, the proposed construction activities and operations plan, the magnitude of surface disturbance involved, and the procedures to be followed in rehabilitating the surface after completion of the operation so that a complete appraisal can be made of the environmental affects associated with the operation.

LOCATED: Approximate 20 air miles east of Artesia,  
New Mexico.

FEDERAL LEASE NUMBER: LC-028731 (B)

LEASE ISSUED: January 1, 1960

RECORD LESSEE: Sun Oil Company

OPERATOR'S AUTHORITY: Operating rights owned by Marbob Energy Corporation.

BOND COVERAGE: Lessees \$150,000 nation-wide bond.

ACRES IN LEASE: 1,480 acres

SURFACE OWNERSHIP: U.S. Government with a grazing permit issued to Bogle Farms, Inc., P.O. Box 358, Dexter, New Mexico 88230.

POOL: Grayburg-Jackson, SR, Q, Gb, SA  
(40-acre spacing)

EXHIBITS:

- A. Portion of Eddy County Map
- B. Oil & Gas Map
- C. Road Map & Wells in vicinity of Proposed Drillsite
- D. Sketch of Well Pad
- E. Sketch of Electric Lines
- F. Sketch of BOP

### THIRTEEN POINT PROGRAM

1. EXISTING ROADS: From Artesia go approximately 21 miles east on Federal Highway US-82 4/10 of a mile beyond Mile Post 129. (This point is approximately 3.1 miles west of Loco Hills, New Mexico). From this starting point turn left (North) on County Road 215 and proceed in a northerly direction for a distance of one mile. Next turn left and proceed west for a distance of .4 miles. Then turn left and proceed in a southerly direction for a distance of .1 miles to drillsite.
2. PROPOSED NEW ROAD: No new roads are necessary since existing road runs through the drillsite.
3. LOCATION OF EXISTING WELLS: The nearest production to the proposed well is the M. Dodd B #42 well located east of the proposed well. This well and all existing wells in the vicinity of the proposed re-entry are shown on Exhibits "B" and "C".
4. LOCATION OF EXISTING AND/OR PROPOSED FACILITIES:
  - A. This is a producing lease and central tank battery is located in the NE/4 NE/4 of Section 15-17S-29E.
  - B. If the well is productive, flowline will be laid along the proposed and existing roadbeds to the battery.
  - C. There are powerlines on the lease, the closest pole being located approximately 635 feet east of the well location. The proposed electric powerline would be approximately 505 feet in length and run from the above referenced pole to a pole in the southeast corner of the well pad, which will have to be inserted. See Exhibit "E".
5. WATER SUPPLY: It is not planned to drill a water supply well. Water for leasehold operations will be purchased from a commercial water hauler.
6. CONSTRUCTION MATERIALS: Material for construction of the proposed new road and well pad will be obtained from either an existing approved caliche pit located on federal land in the SE/4 NE/4 of Section 14-17S-29E, or from the reserve pit.
7. WASTE DISPOSAL:
  - A. Drill cutting will be disposed of in the drilling pits.
  - B. Drilling fluids will be allowed to evaporate in the drilling pits until the pits are dry.

- C. Water produced during tests will be disposed of in the pits.
- D. Oil produced during tests will be produced into temporary test tanks.
- E. Trash, water paper, garbage, and junk will be buried in a trash pit and covered with a minimum of 24 inches of dirt. All waster material will be contained to prevent scattering by the wind. Location of the trash pit is shown on Exhibit "D".
- F. All trash and debris will be buried or removed from the wellsite within 45 days after finishing each drilling and/or completion operation.

8. ANCILLARY FACILITIES: None anticipated.

9. WELLSITE LAYOUT: Refer to Exhibit "D" for direction orientation and access.

- A. The wellsite has been surveyed and an area has been staked and flagged.
- B. The dimensions and relative location of the drill pad and pit with respect to the well bore are shown on Exhibit "D".
- C. The location is nearly level but contains numerous sand dunes which will need to be leveled. Also a fence will be constructed 100' south of the well bore to protect surface from disturbance.
- D. The well pad will be surfaced with caliche.

10. RESTORATION OF SURFACE:

- A. After completion of drilling and/or completion operations, all equipment and other material not needed for operations will be removed. Pits will be filled and the location cleaned of all trash and junk to leave the wellsite in as aesthetically pleasing a condition as possible.
- B. Any unguarded pits containing fluids will be fenced until they are filled.
- C. After abandonment, all equipment, trash and junk will be removed and the location cleaned. Any special rehabilitation and/or special revegetation requirements of the BLM will be complied with and accomplished as expeditiously as possible.

11. OTHER INFORMATION:

- A. Topography: The undisturbed wellsite is at an elevation of 3618.9 feet. The terrain of the area surrounding the location is relatively flat. Regional slope is to the southwest toward the Pecos River.
- B. Soil: Top soil at the wellsite is silty loam.
- C. Land Use & Type: The vicinity surrounding the drillsite is semiarid rangeland and its primary use is for production of oil and gas.
- D. Flora: Flora in the vicinity surrounding the drillsite is sparse. It consists primarily of javalina, saltbush, broomweed and mesquite.
- E. Fauna: No wildlife was observed, however fauna for this type of habitat normally consists of lizards, snakes, rabbits, rodents, coyotes, skunks, quail, dove, and other small birds.
- F. Ponds & Streams: None.
- G. Water Wells: The nearest known water well is over 2 miles to the south.
- H. Residences & Other Structures: There are no occupied dwellings within one (1) mile of the proposed drillsite.
- I. Archaeological, Historical & Cultural Sites: An archaeological survey has been conducted by Pecos Archaeology Consultant and a formal report has been or will be furnished directly to BLM upon its completion.

12. OPERATOR'S REPRESENTATIVE: Representatives responsible for assuring compliance with the approved Surface Use Plan:

Mack Chase or John R. Gray  
P. O. Drawer 217  
Artesia, New Mexico 88210  
Phone 505-748-3303

13. CERTIFICATION:

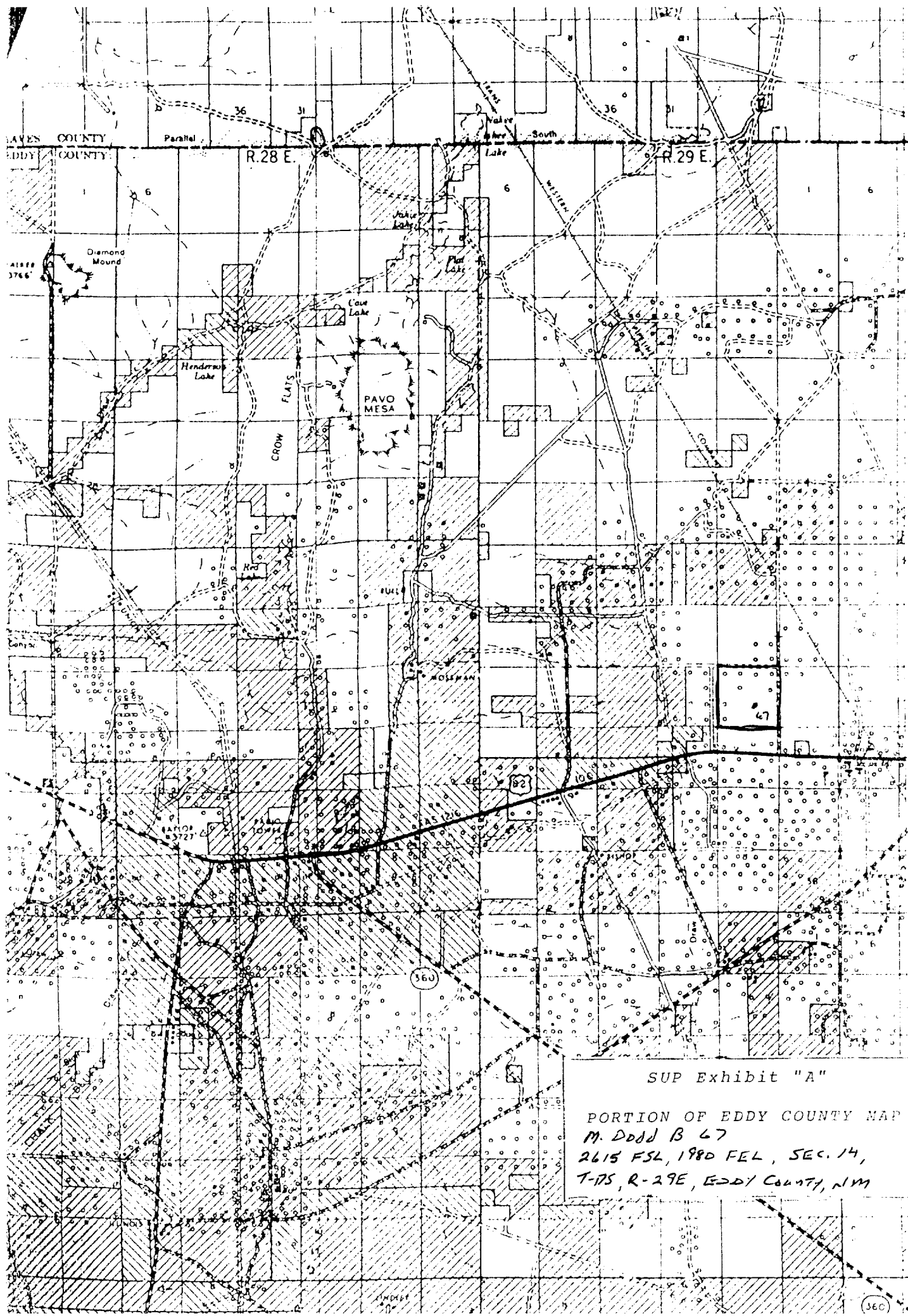
I hereby certify that I, or persons under my direct supervision, have inspected the proposed drillsite and access route; that I am familiar with the conditions which presently exist; that the statements made in this plan are, to the best of my knowledge true and correct; and, that the work associated with the operations proposed herein will be performed by MARBOB ENERGY CORPORATION and its sub-contractors in conformity with this plan and the terms and conditions under which it is approved.

MARCH 15, 1990

Date

John R. Gray  
John R. Gray, President  
MARBOB ENERGY CORPORATION





T 15 S.

T 16 S

T 17 S

T 18 S

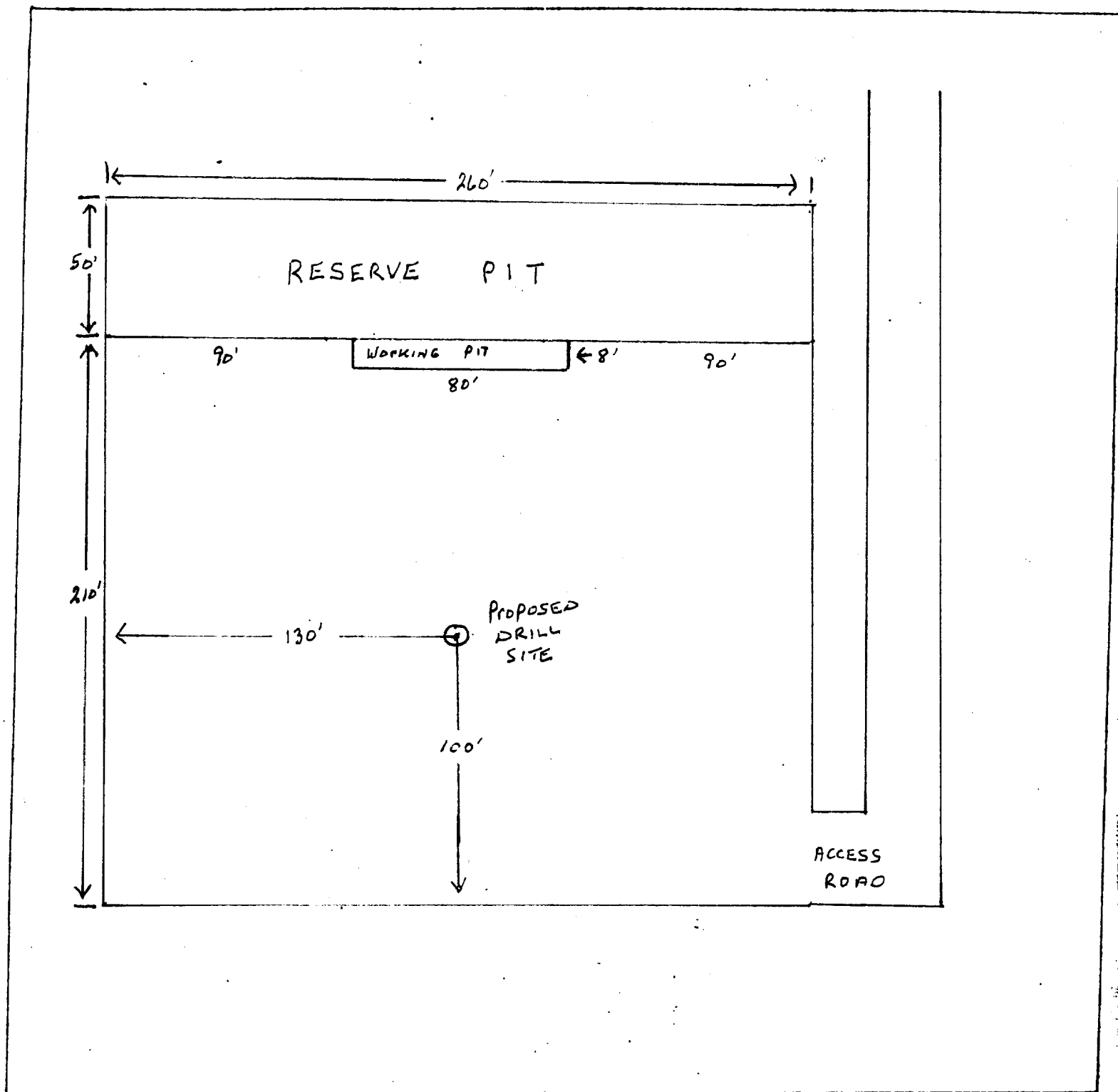
SUP Exhibit "A"

PORTION OF EDDY COUNTY MAP  
M. DDD B 67  
2615 FSL, 1980 FEL, SEC. 14,  
T-17S, R-29E, EDDY COUNTY, N.M.

(360)





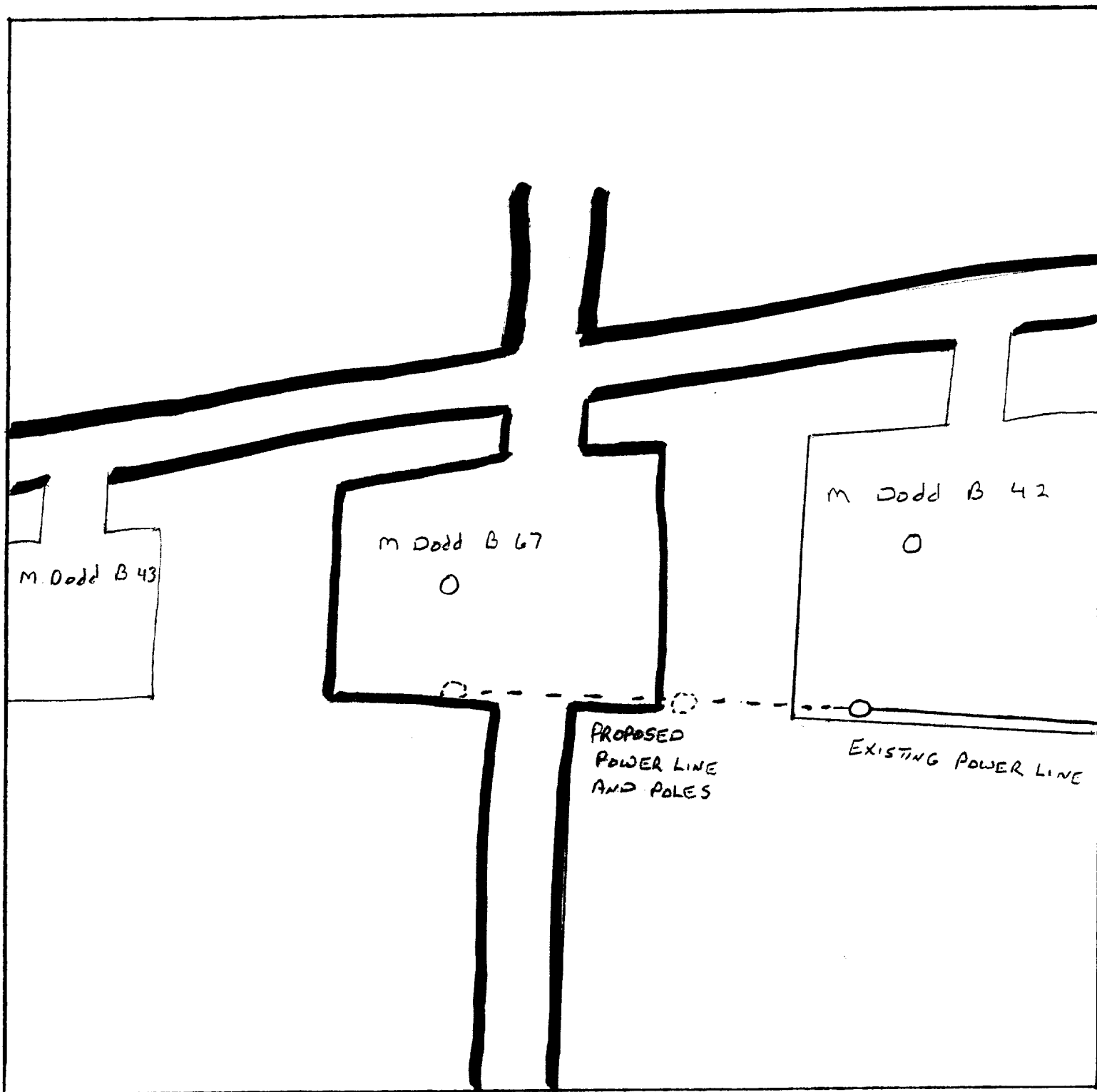


LEGEND

1 cm = 20 ft.

SUP Exhibit "D"

SKETCH OF PROPOSED WELL PAD  
M. Dodd B 67  
2615 FSL, 1980 FEL, SECTION 14,  
T-17S, R-9E, EDDY COUNTY, NM



LEGEND

(1cm = 66ft)

Primary Line  
Proposed Line

SUP Exhibit "E"

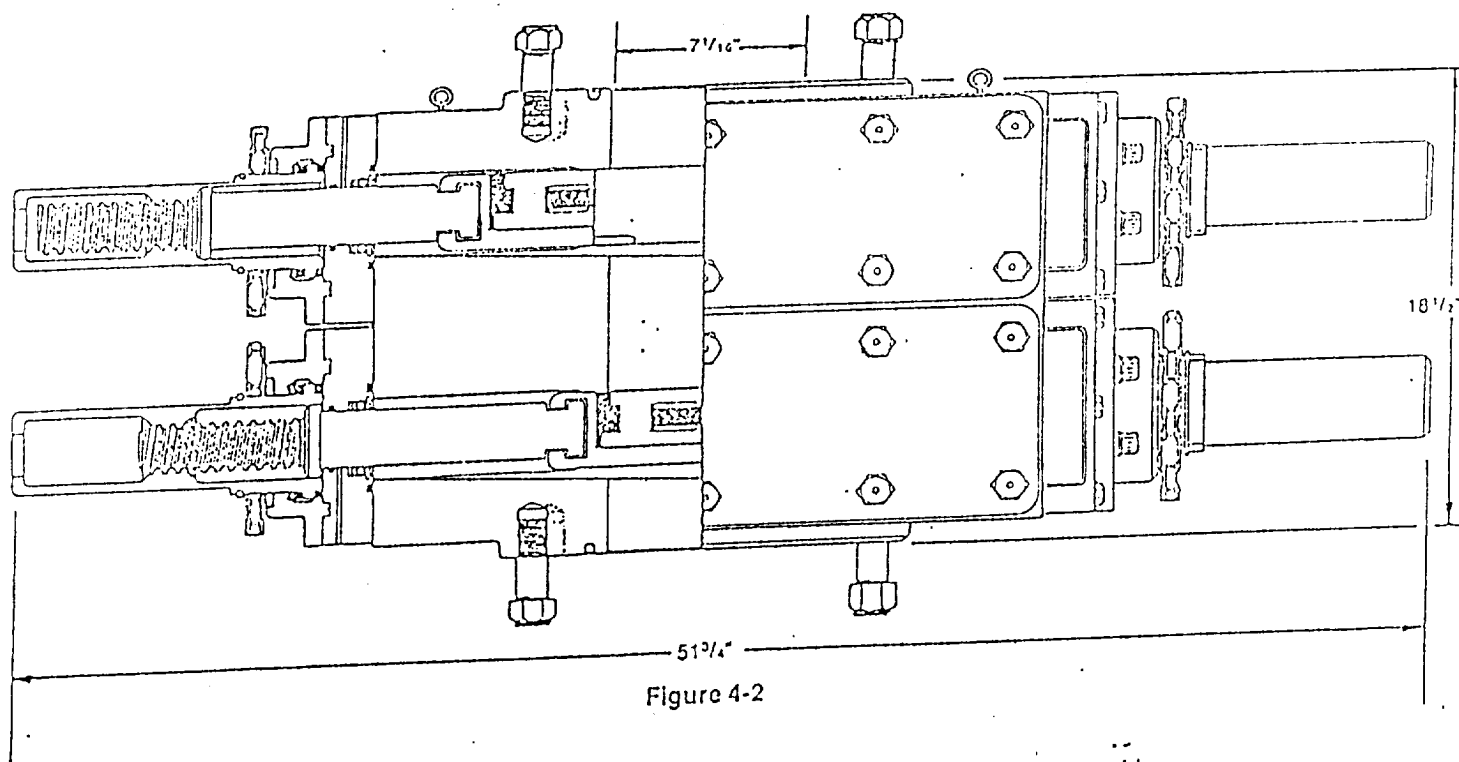
SKETCH OF ELECTRIC POWER  
LINES

M. Dodd B 67

2615 FSL, 1980 FEL SEC. 14,

T-17S, R-29E, GDDY County, NM





## DIMENSIONS AND WEIGHTS

		Manual
Weight	Single (pounds)	1,272
	Double (pounds)	2,335
Overall height, less studs	Single (inches)	10
	Double (inches)	18 1/2
Overall length (inches)		51 3/4
Overall width, less handwheel (inches)		20 1/4
Opening through preventer (inches)		7 1/16
Working pressure (psi)		3,000
Test pressure (psi)		6,000
Handwheel diameter (inches)		20
Ring joint gasket API number		R-45

SUP Exhibit "F"  
 MARBOB ENERGY CORPORATION  
 M. DODD B #67  
 NW1/4N 1/4, Sec 14, T-17S, R-2  
 Eddy County, New Mexico