

**NEW MEXICO OIL CONSERVATION COMMISSION
WELL LOCATION AND ACREAGE DEDICATION PLAT**

Form C-102
Supersedes C-128
Effective 1-1-65

All distances must be from the outer boundaries of the Section.

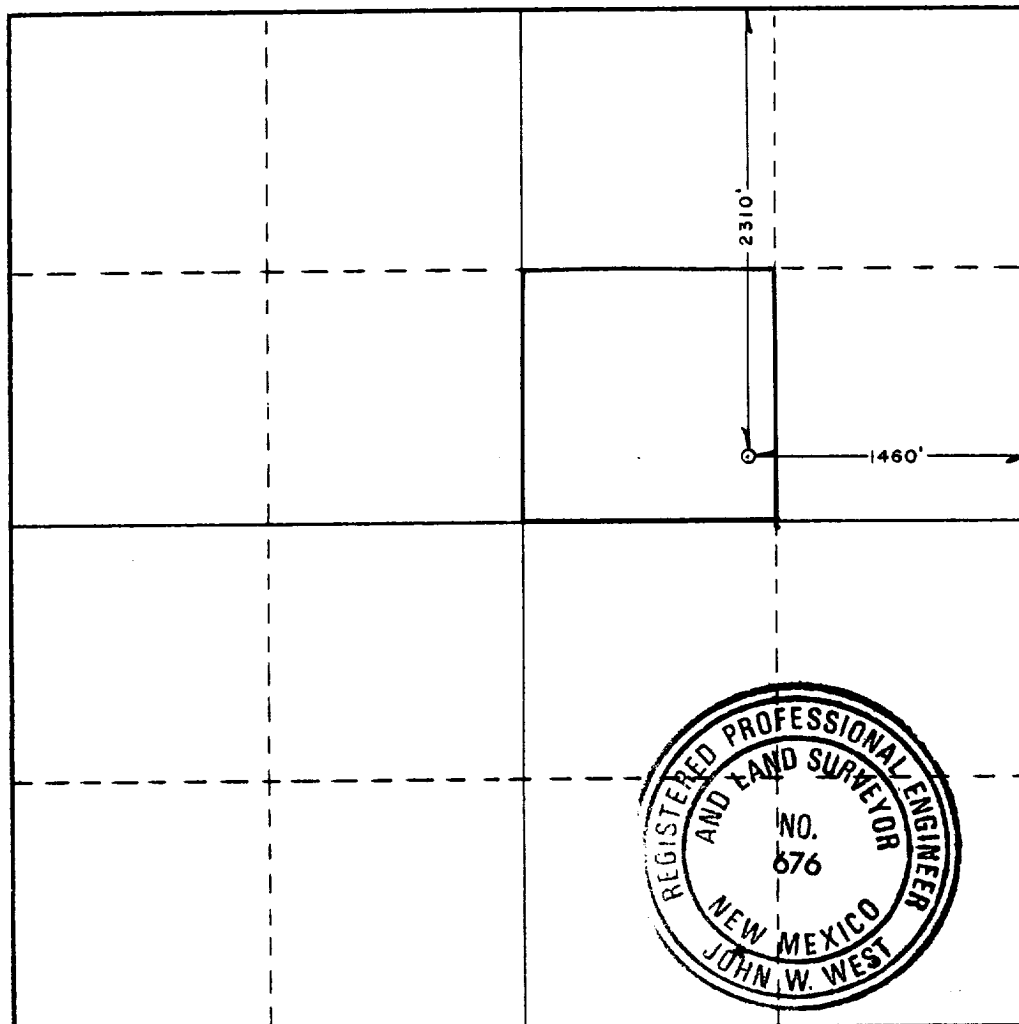
Operator MARBOB ENERGY CORP.			Lease G. J. WEST		Well No. 79
Unit Letter G	Section 21	Township 17 SOUTH	Range 29 EAST	County EDDY	
Actual Footage Location of Well: <div style="display: flex; justify-content: space-between;"> 2310 feet from the NORTH line and 1460 feet from the EAST line </div>					
Ground Level Elev. 3584.5'	Producing Formation San Andres	Pool Grbg Jackson SR Q Grbg SA		Dedicated Acreage: 40 Acres	

1. Outline the acreage dedicated to the subject well by colored pencil or hachure marks on the plat below.
2. If more than one lease is dedicated to the well, outline each and identify the ownership thereof (both as to working interest and royalty).
3. If more than one lease of different ownership is dedicated to the well, have the interests of all owners been consolidated by communitization, unitization, force-pooling, etc?

☐ Yes ☐ No If answer is "yes," type of consolidation _____

If answer is "no," list the owners and tract descriptions which have actually been consolidated. (Use reverse side of this form if necessary.) _____

No allowable will be assigned to the well until all interests have been consolidated (by communitization, unitization, forced-pooling, or otherwise) or until a non-standard unit, eliminating such interests, has been approved by the Commission.



CERTIFICATION

I hereby certify that the information contained herein is true and complete to the best of my knowledge and belief.

Rhonda Nelson

Name

Rhonda Nelson

Position

Production Clerk

Company

Marbob Energy Corporation

Date

May 10, 1991

I hereby certify that the well location shown on this plat was plotted from field notes of actual surveys made by me or under my supervision, and that the same is true and correct to the best of my knowledge and belief.

Date Surveyed

NOVEMBER 6, 1985

Registered Professional Engineer and/or Land Surveyor

John W. West

Certificate No. **JOHN W. WEST, 676**

RONALD J. EIDSON, 3239