

Submit to Appropriate District Office
 State Lease - 6 copies
 Fee Lease - 5 copies

State of New Mexico
 Energy, Minerals and Natural Resources Department

Form C-101
 Revised 1-1-89

FILE

DISTRICT I
 P.O. Box 1980, Hobbs, NM 88240

DISTRICT II
 P.O. Drawer DD, Artesia, NM 88210

DISTRICT III
 1000 Rio Brazos Rd., Aztec, NM 87410

OIL CONSERVATION DIVISION
 P.O. Box 2088
 Santa Fe, New Mexico 87504-2088

RECEIVED
 JUN 25 1991

API NO. (assigned by OCD on New Wells)
30-015-26781

5. Indicate Type of Lease
 STATE FEE

6. State Oil & Gas Lease No.
 B-10714

APPLICATION FOR PERMIT TO DRILL, DEEPEN, OR PLUG BACK

1a. Type of Work:
 DRILL RE-ENTER DEEPEN PLUG BACK

b. Type of Well:
 OIL WELL GAS WELL OTHER
 SINGLE ZONE MULTIPLE ZONE

2. Name of Operator
 Marbob Energy Corporation

3. Address of Operator
 P. O. Drawer 217, Artesia, NM 88210

4. Well Location
 Unit Letter E : 1845 Feet From The North Line and 687 Feet From The West Line
 Section 22 Township 17S Range 29E NMPM Eddy County

7. Lease Name or Unit Agreement Name
 G-J West Coop Unit

8. Well No.
 98

9. Pool name or Wildcat
 Grbg Jackson SR Q Grbg SA

10. Proposed Depth
 4500'

11. Formation
 San Andres

12. Rotary or C.T.
 Rotary

13. Elevations (Show whether DF, RT, GR, etc.)
 3546.8' GR

14. Kind & Status Plug. Bond
 Statewide Active

15. Drilling Contractor
 LaRue

16. Approx. Date Work will start
 7/1/91

17. PROPOSED CASING AND CEMENT PROGRAM

SIZE OF HOLE	SIZE OF CASING	WEIGHT PER FOOT	SETTING DEPTH	SACKS OF CEMENT	EST. TOP
17 1/4"	13 3/8"	54.5#	170'	to circulate	
12 1/4"	8 5/8"	24#	800'	to circulate	
7 7/8"	5 1/2"	17#	4500'	Sufficiently attempt to circ.	

We propose to drill to 170, run 13 3/8" casing and cement, drill to 800' & run 8 5/8" casing and cement, drill on to test the San Andres zone, run 5 1/2" csg, put on production.

Part ID-1
 7-5-91
 New Loc & API

NOTE: On production string, a fluid caliber will be run, will figure cement w/25% excess, attempt to circulate.

APPROVAL VALID FOR 180 DAYS
 PERMIT EXPIRES 1/2/92
 UNLESS DRILLING UNDERWAY

IN ABOVE SPACE DESCRIBE PROPOSED PROGRAM: IF PROPOSAL IS TO DEEPEN OR PLUG BACK, GIVE DATA ON PRESENT PRODUCTIVE ZONE AND PROPOSED NEW PRODUCTIVE ZONE. GIVE BLOWOUT PREVENTER PROGRAM, IF ANY.

I hereby certify that the information above is true and complete to the best of my knowledge and belief.

SIGNATURE Robin Smith TITLE Production Clerk DATE 6/21/91

TYPE OR PRINT NAME Robin Smith TELEPHONE NO. 748-3303

(This space for State Use)

APPROVED BY MIKE WILLIAMS TITLE SUPERVISOR, DISTRICT II DATE JUL 02 1991

CONDITIONS OF APPROVAL, IF ANY:

OIL CONSERVATION DIVISION
 P.O. Box 2088
 Santa Fe, New Mexico 87504-2088

MAY 20 1991
 RECEIVED
 JUN 25 1991

Submit to Appropriate
 District Office
 State Leases - 4 copies
 Fee Leases - 3 copies

DISTRICT I
 P.O. Box 1980, Hobbs, NM 88240

DISTRICT II
 P.O. Drawer DD, Artesia, NM 88210

DISTRICT III
 1000 Rio Benzon Rd., Aztec, NM 87410

WELL LOCATION AND ACREAGE DEDICATION PLAT
 All Distances must be from the outer boundaries of the section

O. C. D.
 ARTESIA OFFICE

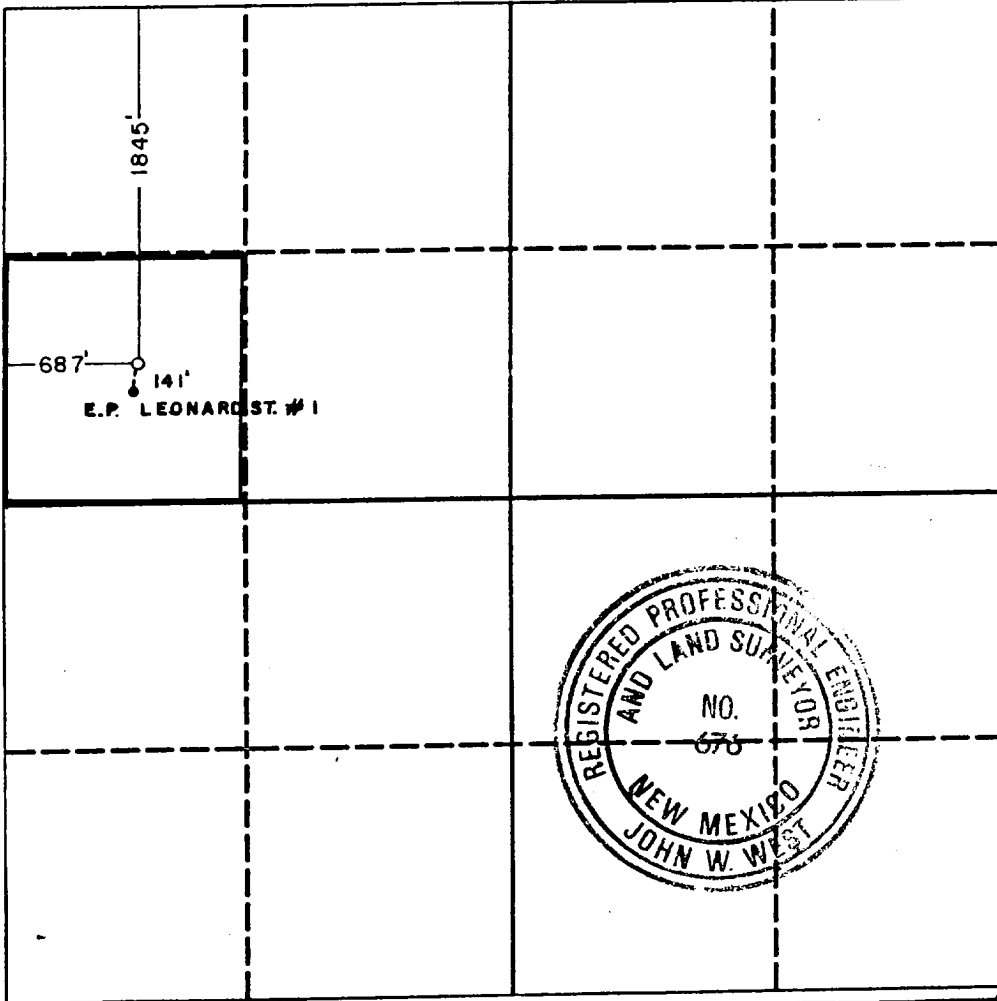
Operator MARBOB ENERGY CORP.			Lease G. J. WEST		Well No. 98
Unit Letter E	Section 22	Township 17 SOUTH	Range 29 EAST	County EDDY	
Actual Footage Location of Well: 1845 feet from the NORTH line and 687 feet from the WEST line					
Ground level Elev. 3546.8	Producing Formation San Andres		Pool Grbg Jackson SR Q Grbg SA	Dedicated Acreage: 40 Acres	

- Outline the acreage dedicated to the subject well by colored pencil or hachure marks on the plat below.
- If more than one lease is dedicated to the well, outline each and identify the ownership thereof (both as to working interest and royalty).
- If more than one lease of different ownership is dedicated to the well, have the interest of all owners been consolidated by communitization, unitization, force-pooling, etc.?

Yes No If answer is "yes" type of consolidation _____

If answer is "no" list the owners and tract descriptions which have actually been consolidated. (Use reverse side of this form if necessary.) _____

No allowable will be assigned to the well until all interests have been consolidated (by communitization, unitization, forced-pooling, or otherwise) or until a non-standard unit, eliminating such interest, has been approved by the Division.



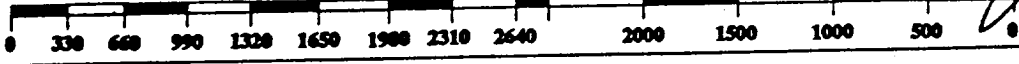
OPERATOR CERTIFICATION
 I hereby certify that the information contained herein is true and complete to the best of my knowledge and belief.

Signature
Robin Smith
 Printed Name
 Robin Smith
 Position
 Production Clerk
 Company
 Marbob Energy Corporation
 Date
 6/21/91

SURVEYOR CERTIFICATION
 I hereby certify that the well location shown on this plat was plotted from field notes of actual surveys made by me or under my supervision, and that the same is true and correct to the best of my knowledge and belief.

Date Surveyed
 5-13-91
 Signature & Seal of Professional Surveyor

John W. West
 Certificate No. **JOHN W. WEST, 676**
RONALD J. EIDSON, 3239



128930