

# OIL CONSERVATION DIVISION

## DISTRICT I

P.O. Box 1888, Hobbs, NM 88240

## DISTRICT II

P.O. Drawer 83, Artesia, NM 88210

## DISTRICT III

1000 N. Bruce Rd., Artesia, NM 87410

P.O. Box 2088

Santa Fe, New Mexico 87504-2088

## WELL LOCATION AND ACREAGE DEDICATION PLAT

All Distances must be from the outer boundaries of the section

Operator BURNETT OIL CO., INC.			Lease GRAYBURG JACKSON (S.A.)		Well No. 49
Unit Letter 0	Section 13	Township 17 SOUTH	Range 30 EAST	NMPM	County EDDY

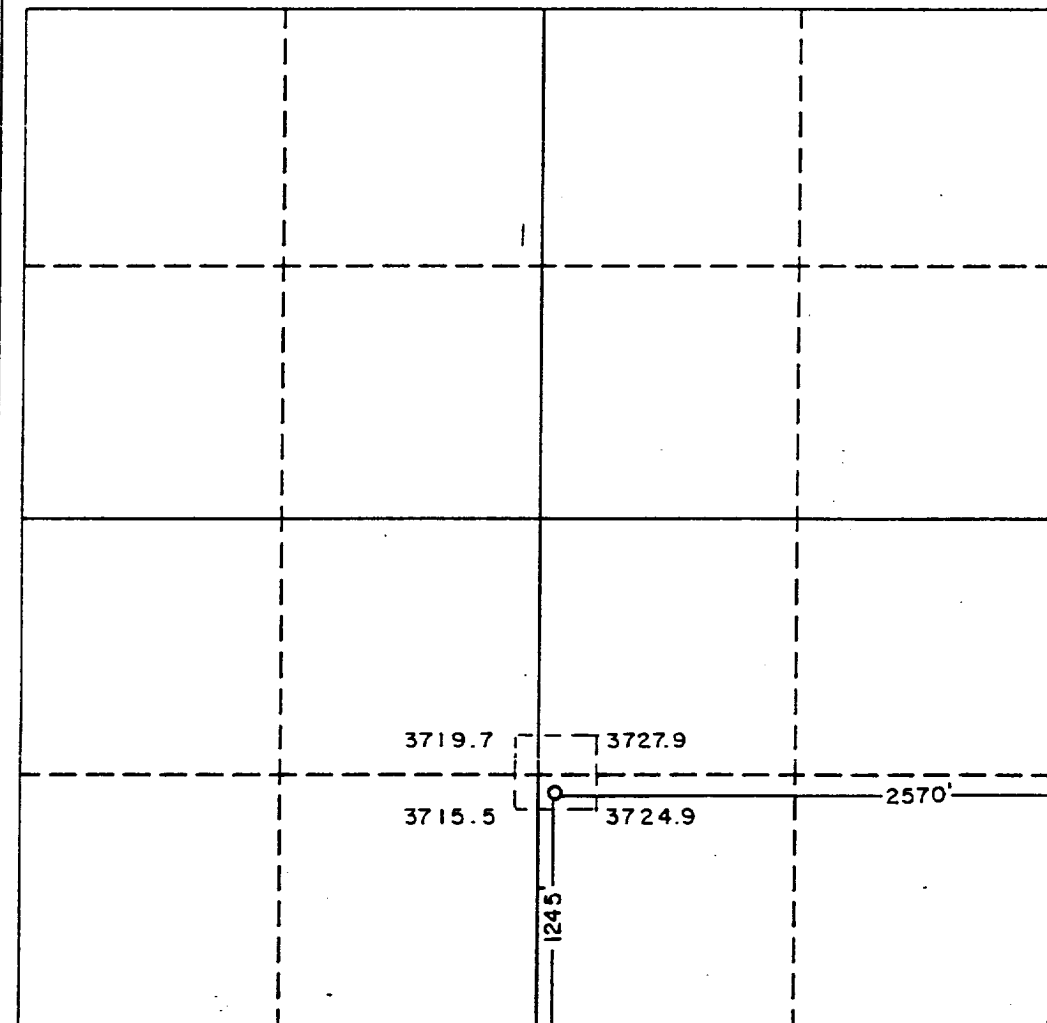
### Actual Footage Location of Well:

2570 feet from the EAST line and		1245 feet from the SOUTH line	
Ground Level Elev. 3722.2	Producing Formation San Andres	Pool Grayburg Jackson	Dedicated Acreage: 40 Acres

- Outline the acreage dedicated to the subject well by colored pencil or hatchure marks on the plat below.
- If more than one lease is dedicated to the well, outline each and identify the ownership thereof (both as to working interest and royalty).
- If more than one lease of different ownership is dedicated to the well, have the interest of all owners been consolidated by communitization, unitization, force-pooling, etc.?  
☒ Yes ☐ No If answer is "yes" type of consolidation Unit

If answer is "no" list of owners and tract descriptions which have actually been consolidated. (Use reverse side of this form necessary.)

No allowable will be assigned to the well unit all interests have been consolidated (by communitization, unitization, forced-pooling, otherwise) or until a non-standard unit, eliminating such interest, has been approved by the Division.



### OPERATOR CERTIFICATION

I hereby certify the the information contained herein is true and complete to the best of my knowledge and belief.

Signature  
*John C. McPhaul*

Printed Name  
John C. McPhaul

Position  
Production Supt.

Company  
Burnett Oil Co., Inc.

Date  
February 11, 1992

### SURVEYOR CERTIFICATION

I hereby certify that the well location shown on this plat was plotted from field notes of actual surveys made by me or under my supervision, and that the same is true and correct to the best of my knowledge and belief.

Date Surveyed  
JAN. 13, 1992

Signature & Seal of  
Professional Surveyor

*Ronald J. Edson*  
Certificate No. JOHN W. WEST, 876  
RONALD J. EDSON, 3539  
GARY L. JONES, 7877

W.O. 92-11-0048