

Submit to Appropriate
District Office
State Lease - 4 copies
Fee Lease - 3 copies

State of New Mexico
Energy, Minerals and Natural Resources Department

Form C-102
Revised 1-1-89

OIL CONSERVATION DIVISION

DISTRICT I
P.O. Box 1980, Hobbs, NM 88240

P.O. Box 2088
Santa Fe, New Mexico 87504-2088

DISTRICT II
P.O. Drawer DD, Artesia, NM 88210

DISTRICT III
1000 Rio Brazos Rd., Aztec, NM 87410

WELL LOCATION AND ACREAGE DEDICATION PLAT

All Distances must be from the outer boundaries of the section

Operator MACK ENERGY CORPORATION			Lease McIntyre DK Federal		Well No. 7
Unit Letter M	Section 17	Township 17 SOUTH	Range 30 EAST	NMPM	County EDDY
Actual Footage Location of Well: 330 feet from the SOUTH line and 330 feet from the WEST line					
Ground Level Elev. 3644.8'	Producing Formation Grayburg San Andres		Pool Grayburg Jackson SR QN GB SA		Dedicated Acreage: 40 Acres

- Outline the acreage dedicated to the subject well by colored pencil or hatchure marks on the plat below.
- If more than one lease is dedicated to the well, outline each and identify the ownership thereof (both as to working interest and royalty).
- If more than one lease of different ownership is dedicated to the well, have the interest of all owners been consolidated by communitization, unitization, force-pooling, etc.?
☐ Yes ☐ No If answer is "yes" type of consolidation _____
If answer is "no" list of owners and tract descriptions which have actually been consolidated. (Use reverse side of this form necessary.)
No allowable will be assigned to the well unit all interests have been consolidated (by communitization, unitization, forced-pooling, otherwise) or until a non-standard unit, eliminating such interest, has been approved by the Division.

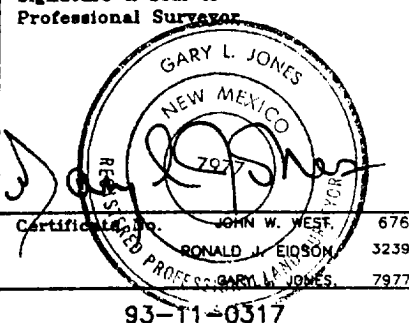
OPERATOR CERTIFICATION

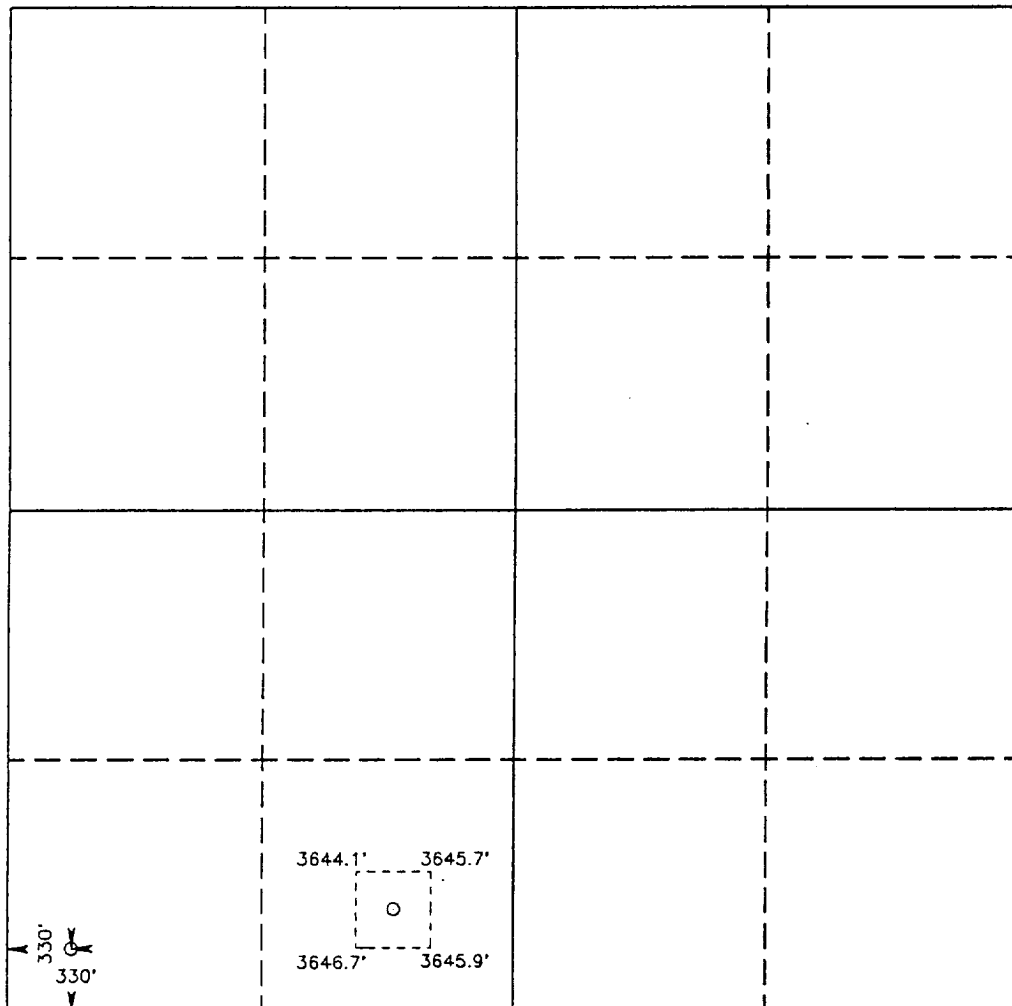
I hereby certify the the information
contained herein is true and complete to the
best of my knowledge and belief.

Signature
Crissa D. Carter
Printed Name
Crissa D. Carter
Position
Production Clerk
Company
Mack Energy Corporation
Date
4/14/93

SURVEYOR CERTIFICATION

I hereby certify that the well location shown
on this plat was plotted from field notes of
actual surveys made by me or under my
supervision, and that the same is true and
correct to the best of my knowledge and
belief.

Date Surveyed
MARCH 1, 1993
Signature & Seal of
Professional Surveyor

Certification No. **JOHN W. WEST 676**
RONALD J. EIDSON 3239
GARY L. JONES 7977
93-11-0317



0 330 660 990 1320 1650 1980 2310 2640 2000 1500 1000 500 0