

OIL CONSERVATION DIVISION

P.O. Box 2088
Santa Fe, New Mexico 87504-2088

DISTRICT I

P.O. Box 1980, Hobbs, NM 88240

DISTRICT II

P.O. Drawer DD, Artesia, NM 88210

DISTRICT III

1000 Rio Brazos Rd., Artec, NM 87410

WELL LOCATION AND ACREAGE DEDICATION PLAT

All Distances must be from the outer boundaries of the section

K

Operator MARBOB ENERGY CORPORATION			Lease Burch C Federal		Well No. 51
Unit Letter J	Section 23	Township 17 SOUTH	Range 29 EAST	NMPM	County EDDY

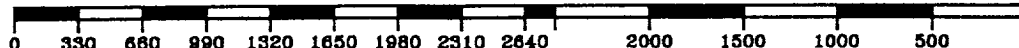
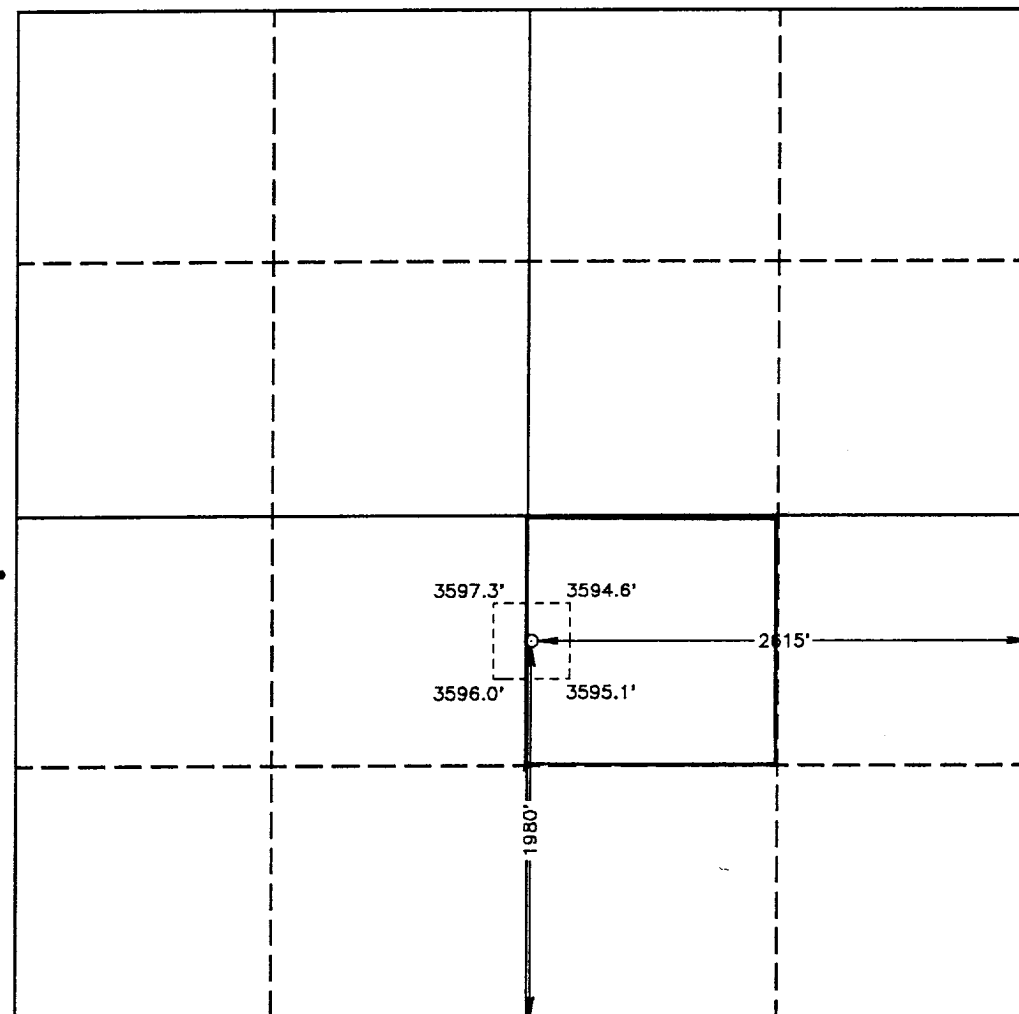
Actual Footage Location of Well:

1980 feet from the SOUTH line and		2615 feet from the EAST line	
Ground Level Elev. 3598.5'	Producing Formation Grayburg San Andres	Pool Grayburg Jackson SR Q Grbg SA	Dedicated Acreage: 40 Acres

1. Outline the acreage dedicated to the subject well by colored pencil or hatchure marks on the plat below.
2. If more than one lease is dedicated to the well, outline each and identify the ownership thereof (both as to working interest and royalty).
3. If more than one lease of different ownership is dedicated to the well, have the interest of all owners been consolidated by communitization, unitization, force-pooling, etc.?
☐ Yes ☐ No If answer is "yes" type of consolidation _____

If answer is "no" list of owners and tract descriptions which have actually been consolidated. (Use reverse side of this form necessary.)

No allowable will be assigned to the well unit all interests have been consolidated (by communitization, unitization, forced-pooling, otherwise) or until a non-standard unit, eliminating such interest, has been approved by the Division.



OPERATOR CERTIFICATION

I hereby certify the the information contained herein is true and complete to the best of my knowledge and belief.

Signature
Rhonda Nelson
Printed Name
Rhonda Nelson
Position
Production Clerk
Company
Marbob Energy Corporation
Date
June 9, 1993

SURVEYOR CERTIFICATION

I hereby certify that the well location shown on this plat was plotted from field notes of actual surveys made by me or under my supervision, and that the same is true and correct to the best of my knowledge and belief.

Date Surveyed
FEBRUARY 10, 1993

Signature & Seal of
Professional Surveyor

Gary L. Jones
Certificate No. **JOHN V. JONES, 676**
RONALD J. EDSON, 3239
GARY L. JONES, 7977
930610-0143