

UNITED STATES
DEPARTMENT OF THE INTERIOR
BUREAU OF LAND MANAGEMENT

CONTACT RECEIVED
OFFICE FOR M
OF COINTE
(Other instructions on
reverse side)

API NO. 30-015-27575

BLM Roswell District
Modified Form No.
N060-3160-2

APPLICATION FOR PERMIT TO DRILL, DEEPEN, OR PLUG BACK

1a. TYPE OF WORK

DRILL ☒

DEEPEN ☐

PLUG BACK ☐

b. TYPE OF WELL

OIL
WELL ☒

GAS
WELL ☐

OTHER ☐

SINGLE
ZONE ☐

MULTIPLE
ZONE ☐

2. NAME OF OPERATOR

Marbob Energy Corporation

3. ADDRESS OF OPERATOR

P. O. Drawer 217, Artesia, NM 88210

4. LOCATION OF WELL (Report location clearly and in accordance with any State requirements)

At surface 1650 FNL 1150 FWL

At proposed prod. zone SAME

14. DISTANCE IN MILES AND DIRECTION FROM NEAREST TOWN OR POST OFFICE*

EAST OF ARTESIA ON HWY 82 APPROX. 21 MILES

15. DISTANCE FROM PROPOSED*

LOCATION TO NEAREST
PROPERTY OR LEASE LINE, FT.
(Also to nearest drlg. unit line, if any)

1150'

18. DISTANCE FROM PROPOSED LOCATION*

TO NEAREST WELL, DRILLING, COMPLETED,
OR APPLIED FOR, ON THIS LEASE, FT.

500'

16. NO. OF ACRES IN LEASE

1120

19. PROPOSED DEPTH

4800'

17. NO. OF ACRES ASSIGNED
TO THIS WELL

40

20. ROTARY OR CABLE TOOLS

ROTARY

21. ELEVATIONS (Show whether DF, RT, GR, etc.)

3597.4' GR

22. APPROX. DATE WORK WILL START*

JUNE 1, 1996

PROPOSED CASING AND CEMENTING PROGRAM

HOLE SIZE	CASING SIZE	WEIGHT/FOOT	GRADE	THREAD TYPE	SETTING DEPTH	QUANTITY OF CEMENT
12 1/4"	8 5/8"	24#	J-55	LTC CIRCULATE	350'	300 SX CLASS C
7 7/8"	5 1/2"	17#	J-55	LTC (NE BACK)	4800'	1100 SX CLASS C

PAY ZONE WILL BE SELECTIVELY STIMULATED AND PERFORATED
AS NEEDED FOR OPTIMUM PRODUCTION.

ATTACHED IS SUPPLEMENTAL DRILLING DATA

***NOTE: THIS A.P.D. WAS PREVIOUSLY APPROVED ON 7/21/93.



IN ABOVE SPACE DESCRIBE PROPOSED PROGRAM: If proposal is to deepen or plug back, give data on present productive zone and proposed new productive zone. If proposal is to drill or deepen directionally, give pertinent data on subsurface locations and measured and true vertical depths. Give blowout preventer program, if any.

24.

SIGNED

Phonda Nelson

TITLE

Production Clerk

DATE

9/29/95

(This space for Federal or State office use)

PERMIT NO.

APPROVAL DATE

APPROVED BY

TITLE

CONDITIONS OF APPROVAL, IF ANY:

DATE

NOV 20 1995

APPROVAL SUBJECT TO
GENERAL REQUIREMENTS AND
SPECIAL STIPULATIONS
ATTACHED

Submit to Appropriate
District Office
State Lease - 4 copies
Fee Lease - 2 copies

State of New Mexico
Energy, Minerals and Natural Resources Department

Form C-102
Revised 1-1-89

OIL CONSERVATION DIVISION

P.O. Box 2088

Santa Fe, New Mexico 87504-2088

DISTRICT I

P.O. Box 1990, Hobbs, NM 88240

DISTRICT II

P.O. Drawer DD, Artesia, NM 88210

DISTRICT III

1000 Rio Brasos Rd., Artec, NM 87410

WELL LOCATION AND ACREAGE DEDICATION PLAT

All Distances must be from the outer boundaries of the section

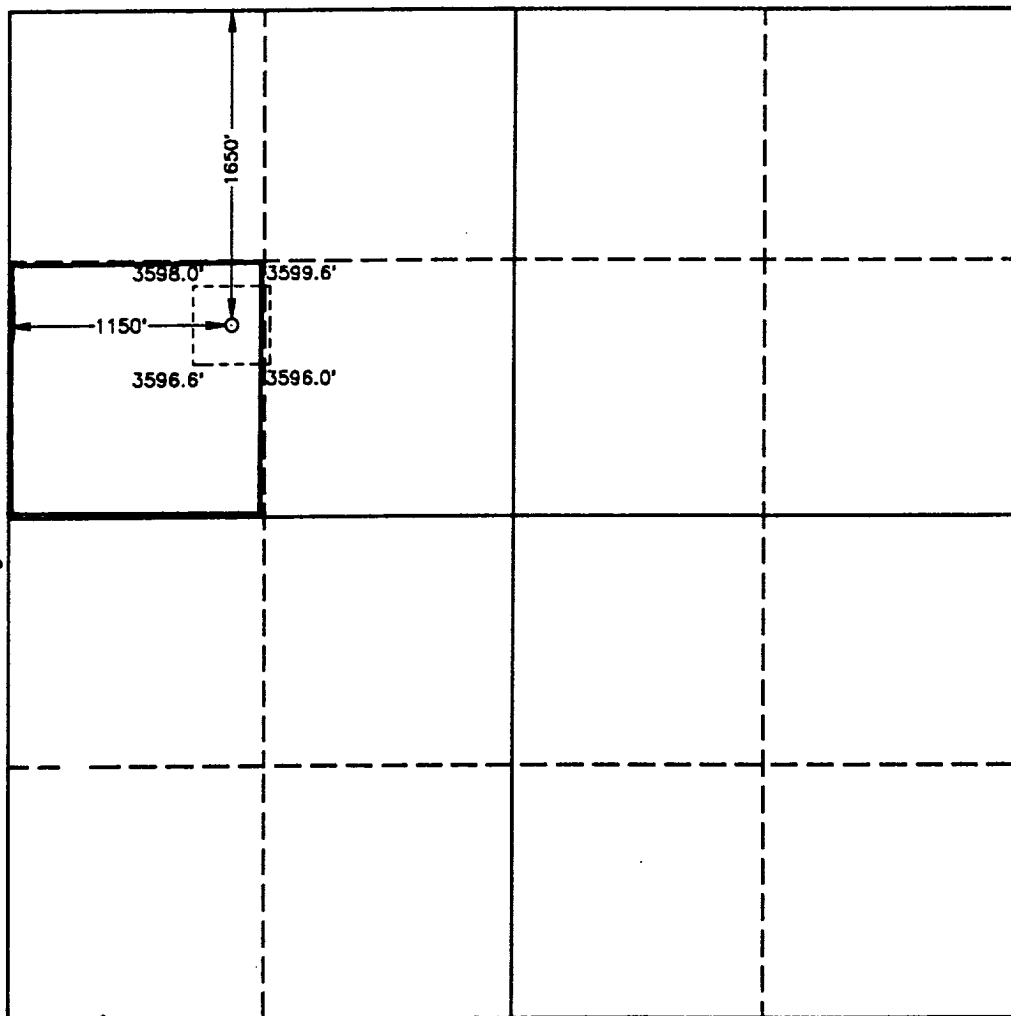
H

Operator MARBOB ENERGY CORPORATION			Lease Burch C Federal		Well No. 52
Unit Letter E	Section 23	Township 17 SOUTH	Range 29 EAST	County NMPM	EDDY
Actual Footage Location of Well: 1650 feet from the NORTH line and 1150 feet from the WEST line					
Ground Level Elev. 3597.4'	Producing Formation Grayburg San Andres		Pool Grbg Jackson SR Q Grbg SA		Dedicated Acreage: 40 Acres

1. Outline the acreage dedicated to the subject well by colored pencil or hatchure marks on the plat below.
2. If more than one lease is dedicated to the well, outline each and identify the ownership thereof (both as to working interest and royalty).
3. If more than one lease of different ownership is dedicated to the well, have the interest of all owners been consolidated by communitization, unitization, force-pooling, etc.?
☐ Yes ☐ No If answer is "yes" type of consolidation _____

If answer is "no" list of owners and tract descriptions which have actually been consolidated. (Use reverse side of this form necessary.)

No allowable will be assigned to the well unit all interests have been consolidated (by communitization, unitization, forced-pooling, otherwise) or until a non-standard unit, eliminating such interest, has been approved by the Division.



OPERATOR CERTIFICATION

I hereby certify the the information contained herein is true and complete to the best of my knowledge and belief.

Signature

Printed Name

Rhonda Nelson

Position

Production Clerk

Company

Marbob Energy Corporation

Date

June 9, 1993

SURVEYOR CERTIFICATION

I hereby certify that the well location shown on this plat was plotted from field notes of actual surveys made by me or under my supervision, and that the same is true and correct to the best of my knowledge and belief.

Date Surveyed

FEBRUARY 11, 1993

Signature & Seal of
Professional Surveyor

GARY L. JOHNSON
1977
PROFESSIONAL SURVEYOR
Certificate No. JOHN W. WEST 878
RONALD L. JOHNSON 3239
GARY L. JOHNSON 7977

93-11-0140