

OIL CONSERVATION DIVISION

DISTRICT I
P.O. Box 1980, Hobbs, NM 88240

P.O. Box 2088
Santa Fe, New Mexico 87504-2088

DISTRICT II
P.O. Drawer DD, Artesia, NM 88210

DISTRICT III
1000 Rio Brazos Rd., Aztec, NM 87410

WELL LOCATION AND ACREAGE DEDICATION PLAT

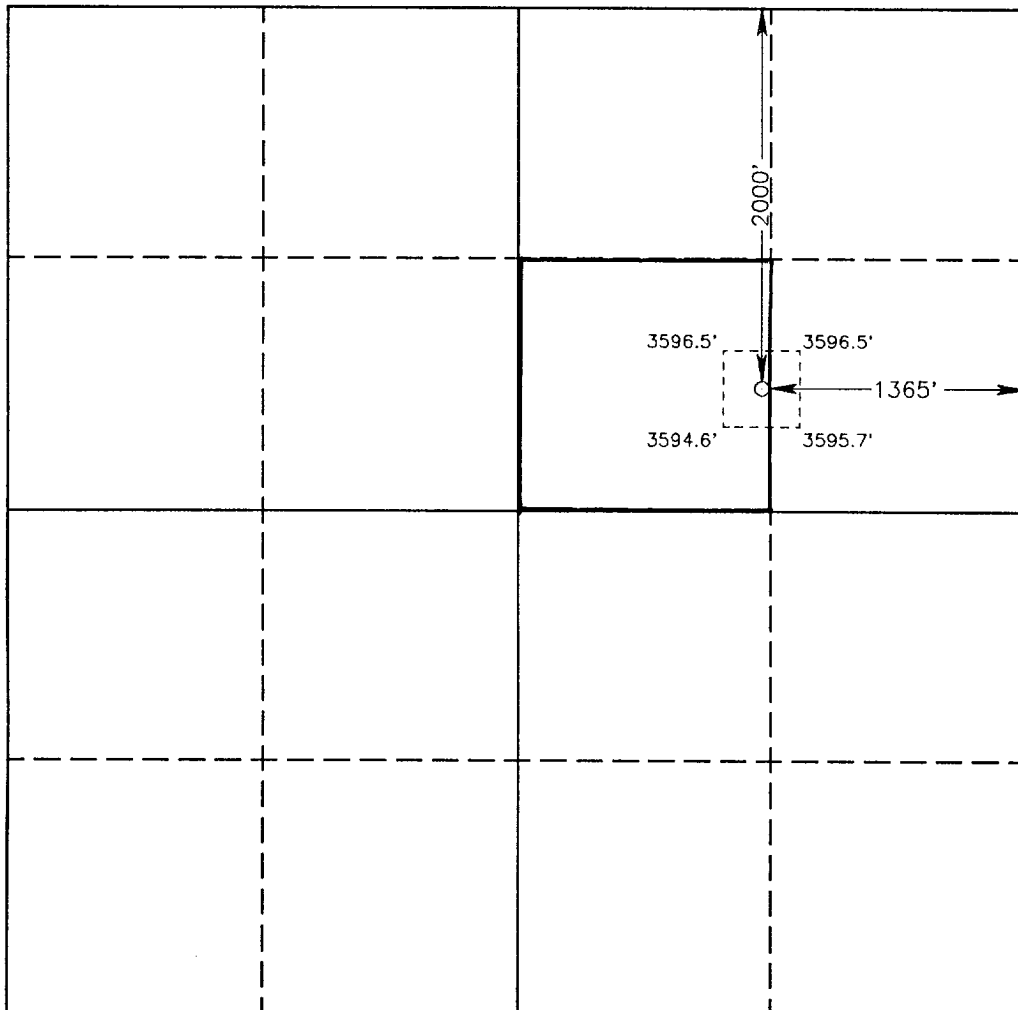
All Distances must be from the outer boundaries of the section

Operator MARBOB ENERGY CORP.			Lease Burch BB Federal		Well No. 39
Unit Letter G	Section 23	Township 17 SOUTH	Range 29 EAST	NMPM	County EDDY
Actual Footage Location of Well:					
2000 feet from the NORTH line and		1365 feet from the EAST line			
Ground Level Elev. 3595.3'	Producing Formation Grayburg San Andres		Pool Grbg Jackson SR Q Grbg SA		Dedicated Acreage: 40 Acres

1. Outline the acreage dedicated to the subject well by colored pencil or hachure marks on the plat below.
2. If more than one lease is dedicated to the well, outline each and identify the ownership thereof (both as to working interest and royalty).
3. If more than one lease of different ownership is dedicated to the well, have the interest of all owners been consolidated by communitization, unitization, force-pooling, etc.?
☐ Yes ☐ No If answer is "yes" type of consolidation _____

If answer is "no" list of owners and tract descriptions which have actually been consolidated. (Use reverse side of this form necessary.)

No allowable will be assigned to the well unit all interests have been consolidated (by communitization, unitization, forced-pooling, otherwise) or until a non-standard unit, eliminating such interest, has been approved by the Division.



OPERATOR CERTIFICATION

I hereby certify the the information contained herein is true and complete to the best of my knowledge and belief.

Signature
Rhonda Nelson
Printed Name
Rhonda Nelson
Position
Production Clerk
Company
Marbob Energy Corporation
Date
July 7, 1993

SURVEYOR CERTIFICATION

I hereby certify that the well location shown on this plat was plotted from field notes of actual surveys made by me or under my supervision, and that the same is true and correct to the best of my knowledge and belief.

Date Surveyed
JUNE 2, 1993

Signature & Seal of
Professional Surveyor

Certificate No. JOHN W. SWERT, 876
RONALD J. SIDSON, 3239
GARY L. JONES, 7977
8747

0 330 660 990 1320 1650 1980 2310 2640 2000 1500 1000 500 0