

**OIL CONSERVATION DIVISION**

P.O. Box 2088  
Santa Fe, New Mexico 87504-2088

**DISTRICT I**

P.O. Box 1980, Hobbs, NM 88240

**DISTRICT II**

P.O. Drawer DD, Artesia, NM 88210

**DISTRICT III**

1000 Rio Brazos Rd., Aztec, NM 87410

**WELL LOCATION AND ACREAGE DEDICATION PLAT**

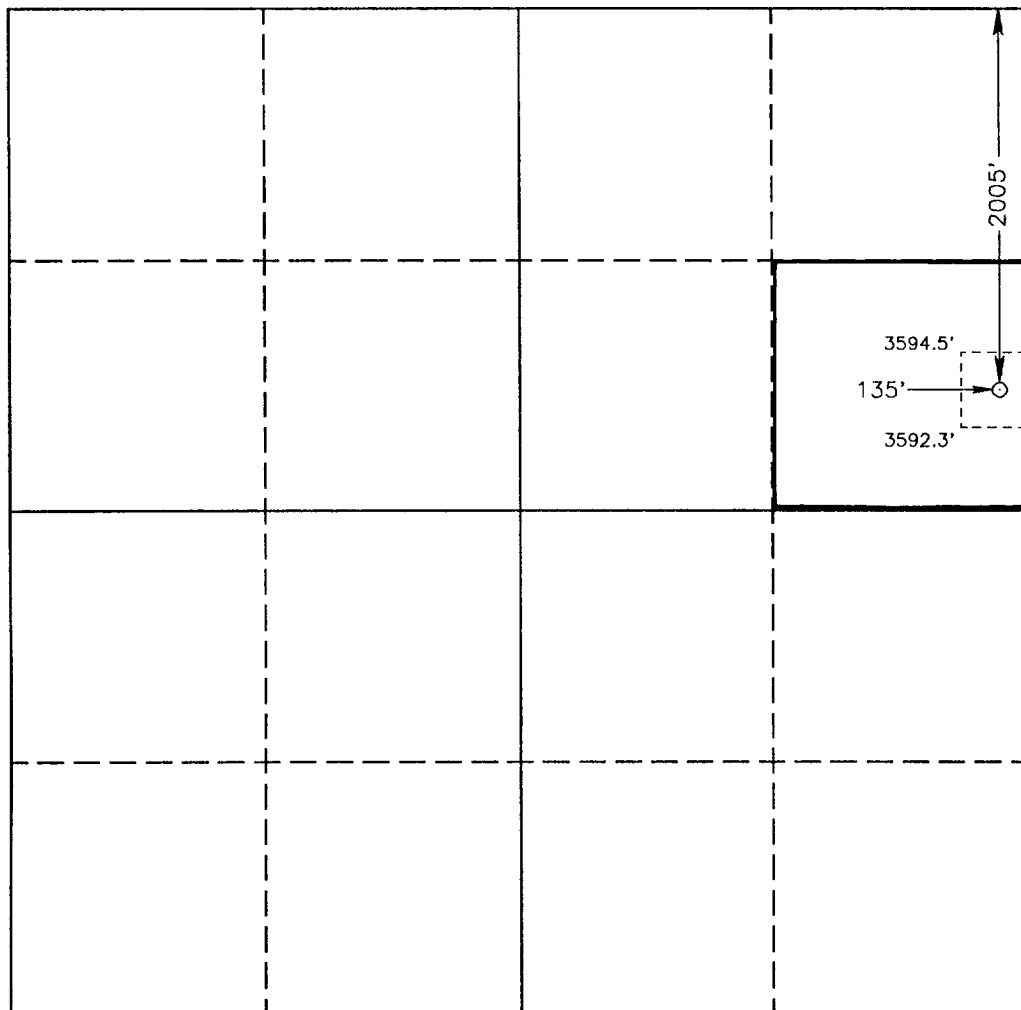
All Distances must be from the outer boundaries of the section

Operator MARBOB ENERGY CORP.		Lease Burch BB Federal		Well No. 41
Unit Letter H	Section 23	Township 17 SOUTH	Range 29 EAST NMPM	County EDDY
Actual Footage Location of Well: 2005 feet from the NORTH line and 135 feet from the EAST line				
Ground Level Elev. 3592.0'	Producing Formation Grayburg San Andres	Pool Grbg Jackson SR Q Grbg SA	Dedicated Acreage: 40 Acres	

1. Outline the acreage dedicated to the subject well by colored pencil or hachure marks on the plat below.
2. If more than one lease is dedicated to the well, outline each and identify the ownership thereof (both as to working interest and royalty).
3. If more than one lease of different ownership is dedicated to the well, have the interest of all owners been consolidated by communitization, unitization, force-pooling, etc.?  
☐ Yes ☐ No If answer is "yes" type of consolidation \_\_\_\_\_

If answer is "no" list of owners and tract descriptions which have actually been consolidated. (Use reverse side of this form necessary.)

No allowable will be assigned to the well unit all interests have been consolidated (by communitization, unitization, forced-pooling, otherwise) or until a non-standard unit, eliminating such interest, has been approved by the Division.



0 330 660 990 1320 1650 1980 2310 2640 2000 1500 1000 500 0

**OPERATOR CERTIFICATION**

I hereby certify the the information contained herein is true and complete to the best of my knowledge and belief.

Signature  
Rhonda Nelson  
Printed Name  
Rhonda Nelson  
Position  
Production Clerk  
Company  
Marbob Energy Corporation  
Date  
July 7, 1993

**SURVEYOR CERTIFICATION**

I hereby certify that the well location shown on this plat was plotted from field notes of actual surveys made by me or under my supervision, and that the same is true and correct to the best of my knowledge and belief.

Date Surveyed  
JUNE 3, 1993  
Signature & Seal of  
Professional Surveyor

GARY L. JONES  
NEW MEXICO  
1977  
Certificate No. JOHN W. WEST 676  
RONALD E. JONES, 3239  
GARY L. JONES, 7977  
95-11-6849