

OIL CONSERVATION DIVISION

P.O. Box 2088  
Santa Fe, New Mexico 87504-2088

DISTRICT I  
P.O. Box 1980, Hobbs, NM 88240

DISTRICT II  
P.O. Drawer DD, Artesia, NM 88210

DISTRICT III  
1000 Rio Brazos Rd., Aztec, NM 87410

WELL LOCATION AND ACREAGE DEDICATION PLAT

All Distances must be from the outer boundaries of the section

Operator MARBOB ENERGY CORP.			Lease Keely A Federal		Well No. 35
Unit Letter C	Section 24	Township 17 SOUTH	Range 29 EAST	NMPM	County EDDY

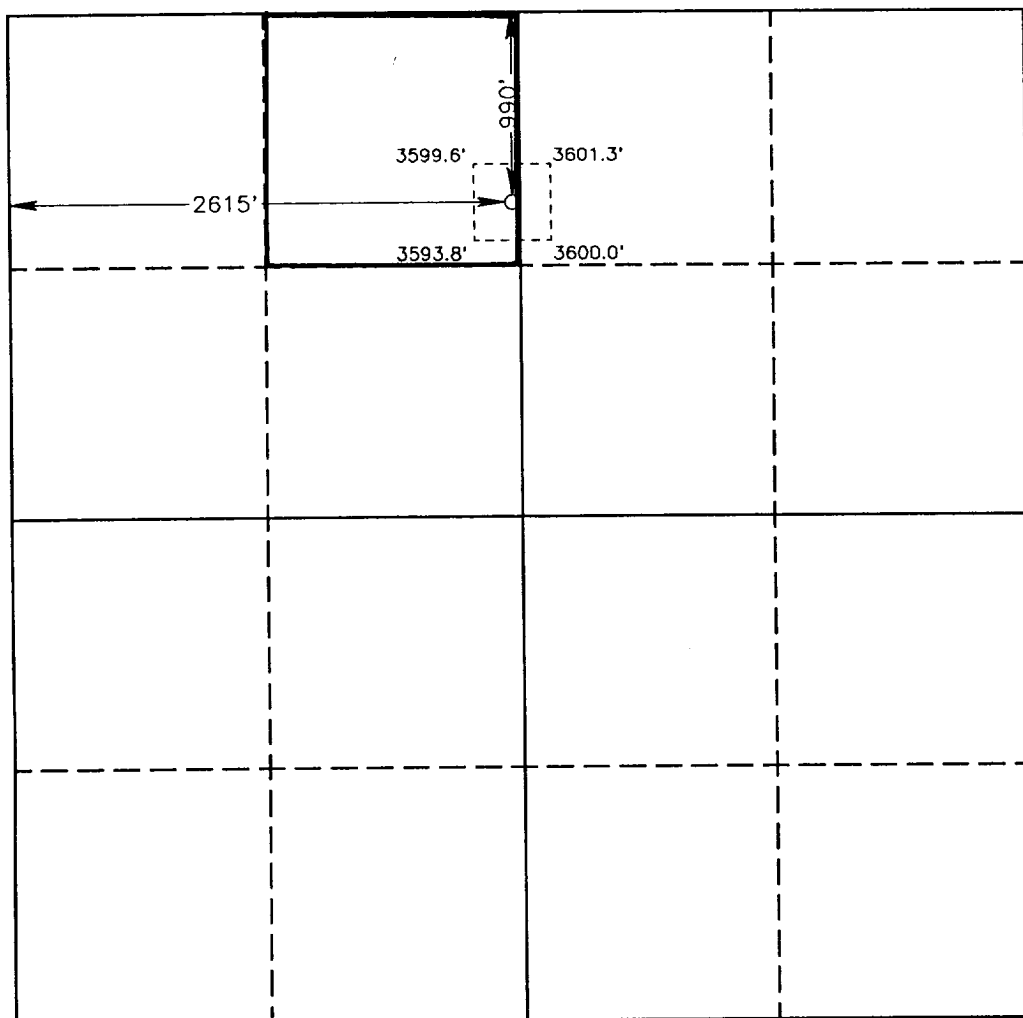
Actual Footage Location of Well:					
990 feet from the NORTH line and		2615 feet from the WEST line			
Ground Level Elev. 3598.3'	Producing Formation Grayburg San Andres	Pool Grbg Jackson SR Q Grbg SA	Dedicated Acreage: 40 Acres		

1. Outline the acreage dedicated to the subject well by colored pencil or hachure marks on the plat below.
2. If more than one lease is dedicated to the well, outline each and identify the ownership thereof (both as to working interest and royalty).
3. If more than one lease of different ownership is dedicated to the well, have the interest of all owners been consolidated by communitization, unitization, force-pooling, etc.?

☐ Yes ☐ No If answer is "yes" type of consolidation \_\_\_\_\_

If answer is "no" list of owners and tract descriptions which have actually been consolidated. (Use reverse side of this form necessary.)

No allowable will be assigned to the well unit all interests have been consolidated (by communitization, unitization, forced-pooling, otherwise) or until a non-standard unit, eliminating such interest, has been approved by the Division.



OPERATOR CERTIFICATION

I hereby certify the the information contained herein is true and complete to the best of my knowledge and belief.

Signature  
*Rhonda Nelson*

Printed Name  
Rhonda Nelson

Position  
Production Clerk  
Company  
Marbob Energy Corporation

Date  
July 7, 1993

SURVEYOR CERTIFICATION

I hereby certify that the well location shown on this plat was plotted from field notes of actual surveys made by me or under my supervision, and that the same is true and correct to the best of my knowledge and belief.

Date Surveyed  
JUNE 1, 1993

Signature & Seal of  
Professional Surveyor

*[Signature]*  
BARY L. JONES  
NEW MEXICO  
REGISTERED PROFESSIONAL SURVEYOR  
Certificate No. JOHN W. WELLS 676  
RONALD J. EINHORN 3239  
PROFESSORIAL SURVEYOR 7917

93-11-0946