

OIL CONSERVATION DIVISION

P.O. Box 2088

Santa Fe, New Mexico 87504-2088

DISTRICT I

P.O. Box 1980, Hobbs, NM 88240

DISTRICT II

P.O. Drawer DD, Artesia, NM 88210

DISTRICT III

1000 Rio Brazos Rd., Aztec, NM 87410

WELL LOCATION AND ACREAGE DEDICATION PLAT

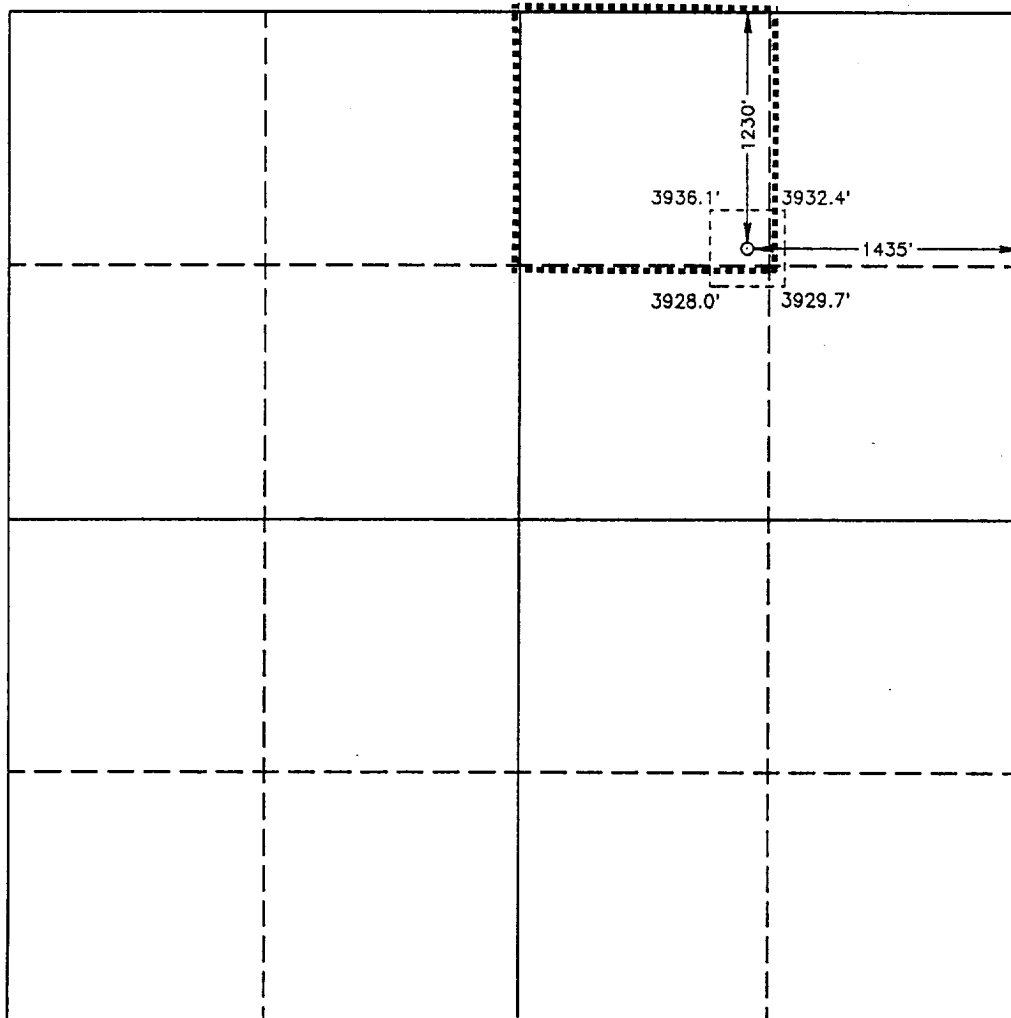
All Distances must be from the outer boundaries of the section

Operator SOCORRO PETROLEUM COMPANY			Lease H.E. WEST "B"		Well No. 66
Unit Letter B	Section 10	Township 17 SOUTH	Range 31 EAST	NMPM	County EDDY
Actual Footage Location of Well: 1230 feet from the NORTH line and 1435 feet from the EAST line					
Ground Level Elev. 3930.2'	Producing Formation Grayburg-San Andres		Pool Grayburg-Jackson Pool		Dedicated Acreage: 40 Acres

1. Outline the acreage dedicated to the subject well by colored pencil or hachure marks on the plat below.
2. If more than one lease is dedicated to the well, outline each and identify the ownership thereof (both as to working interest and royalty).
Single Lease
3. If ~~more than one lease~~ of different ownership is dedicated to the well, have the interest of all owners been consolidated by communitization, unitization, force-pooling, etc.?
☐ Yes ☐ No If answer is "yes" type of consolidation **NA**

If answer is "no" list of owners and tract descriptions which have actually been consolidated. (Use reverse side of this form necessary.)

No allowable will be assigned to the well unit all interests have been consolidated (by communitization, unitization, forced-pooling, otherwise) or until a non-standard unit, eliminating such interest, has been approved by the Division.



OPERATOR CERTIFICATION

I hereby certify the the information contained herein is true and complete to the best of my knowledge and belief.

Signature

Printed Name

JERRY W. LONG

Position

Permit Agent

Company

SOCORRO PETROLEUM COMPANY

Date

1/19/93

SURVEYOR CERTIFICATION

I hereby certify that the well location shown on this plat was plotted from field notes of actual surveys made by me or under my supervision, and that the same is true and correct to the best of my knowledge and belief.

Date Surveyed

JANUARY 4, 1993

Signature & Seal of Professional Surveyor

7977
JOHN W. WEST,
RONALD J. EIDSON,
GARY L. JONES

92-110-2042