

Submit to Appropriate
District Office
State Lease - 4 copies
Fee Lease - 3 copies

State of New Mexico
Energy, Minerals and Natural Resources Department

Form C-102
Revised 1-1-89

OIL CONSERVATION DIVISION

P.O. Box 2088
Santa Fe, New Mexico 87504-2088

DISTRICT I

P.O. Box 1980, Hobbs, NM 88240

DISTRICT II

P.O. Drawer DD, Artesia, NM 88210

DISTRICT III

1000 Rio Brazos Rd., Aztec, NM 87410

WELL LOCATION AND ACREAGE DEDICATION PLAT

All Distances must be from the outer boundaries of the section

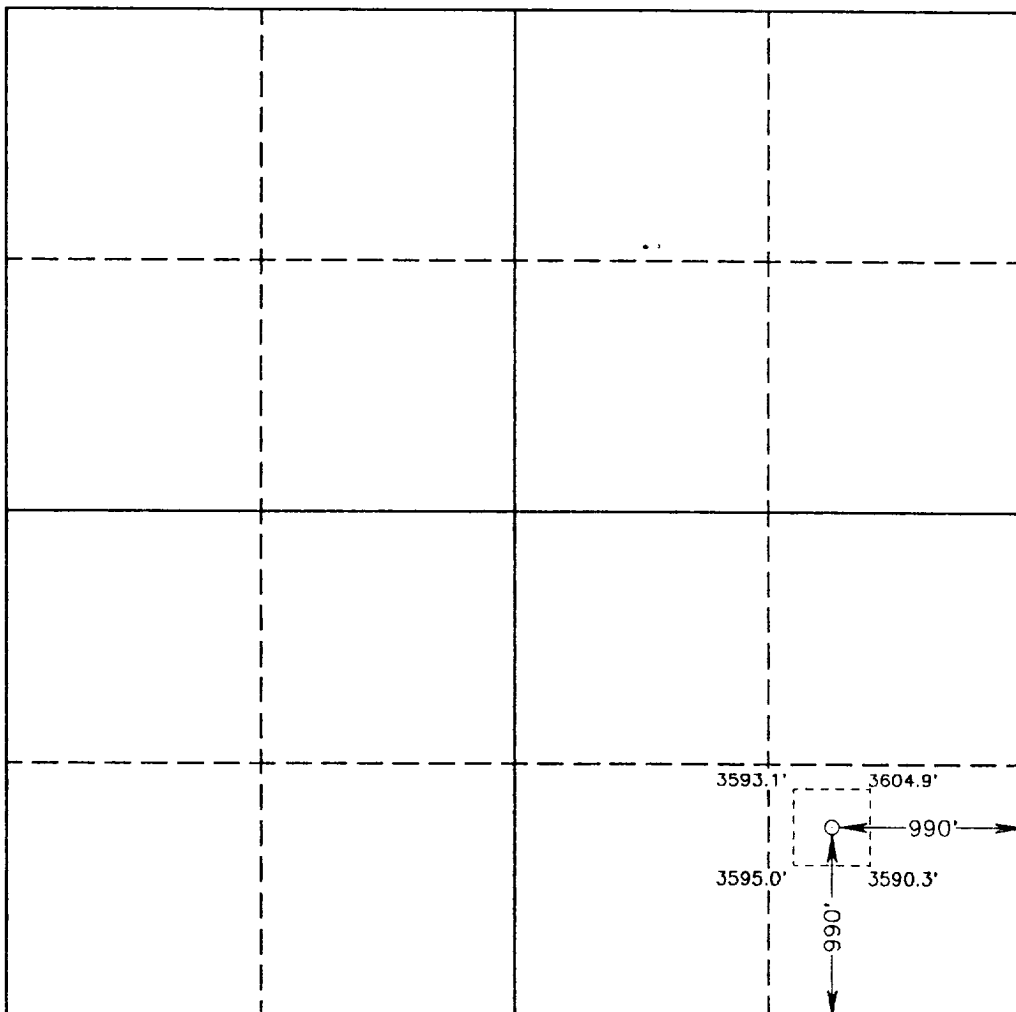
Operator ENRON OIL AND GAS COMPANY			Lease CEDAR LAKE "35" FEDERAL COM.		Well No. 2
Unit Letter P	Section 35	Township 17 SOUTH	Range 30 EAST	NMPM	County EDDY
Actual Footage Location of Well: 990 feet from the SOUTH line and 990 feet from the EAST line					
Ground Level Elev. 3584.0'	Producing Formation Morrow	Pool LOCO HILLS UNO.		Dedicated Acreage: S/2 320 Acres	

1. Outline the acreage dedicated to the subject well by colored pencil or hachure marks on the plat below.
2. If more than one lease is dedicated to the well, outline each and identify the ownership thereof (both as to working interest and royalty).
3. If more than one lease of different ownership is dedicated to the well, have the interest of all owners been consolidated by communitization, unitization, force-pooling, etc.?

☒ Yes ☐ No If answer is "yes" type of consolidation to be communitized

If answer is "no" list of owners and tract descriptions which have actually been consolidated. (Use reverse side of this form necessary.)

No allowable will be assigned to the well unit all interests have been consolidated (by communitization, unitization, forced-pooling, otherwise) or until a non-standard unit, eliminating such interest, has been approved by the Division.



OPERATOR CERTIFICATION

I hereby certify the the information contained herein is true and complete to the best of my knowledge and belief.

Signature

Betty Gildon

Printed Name

Betty Gildon

Position

Regulatory Analyst

Company

Enron Oil & Gas Company

Date

11/3/93

SURVEYOR CERTIFICATION

I hereby certify that the well location shown on this plat was plotted from field notes of actual surveys made by me or under my supervision, and that the same is true and correct to the best of my knowledge and belief.

Date Surveyed

SEPTEMBER 21, 1993

Signature & Seal of
Professional Surveyor

GARY L. JONES
NEW MEXICO
7977
JOHN W. WEST
676
PROFESSIONAL SURVEYOR
3239
GARY L. JONES
7977

93-11-1822